

# Converting Colors

Decimal(12080989)

Have a look what the booklet for  
Decimal(12080989) contains.

<b>Decimal(12080989)</b> .....	3
<i><b>Conversions</b></i> .....	4
<i><b>Details</b></i> .....	6
<i><b>Harmonies</b></i> .....	11
<i><b>Previews</b></i> .....	23
<i><b>Color Blindness Simulation</b></i> .....	26
<i><b>CSS Examples</b></i> .....	29

# Color

**Decimal(12080989)**

# Conversions

## Conversions Part 1

<b>Format</b>	<b>Color</b>
Hex	B8575D
RGB	184, 87, 93
RGB Percent	72%, 34%, 36%
CMY	0.2784, 0.6588, 0.6353
CMYK	0.00, 0.53, 0.49, 0.28
HSL	356°, 41%, 53%
HSV	356°, 53%, 72%
XYZ	25.1511, 17.7971, 12.4655
YIQ	116.6870, 55.8860, 22.4300

# Conversions

## Conversions Part 2

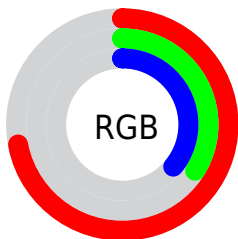
Format	Color
<a href="#">RYB</a>	<a href="#">184, 87, 93</a>
Decimal	<a href="#">12080989</a>
CIELab	<a href="#">49.25, 39.76, 15.38</a>
CIElCh	<a href="#">49, 42.631, 21.155</a>
Yxy	<a href="#">17.7971, 0.4539, 0.3212</a>
Android (android.graphics.Color)	<a href="#">4290271069</a> ( <a href="#">0xFFB8575D</a> )
YUV	<a href="#">116.6870, -11.6777, 59.0335</a>
Hunter-Lab	<a href="#">42.1866, 32.5932, 12.0113</a>

# Details

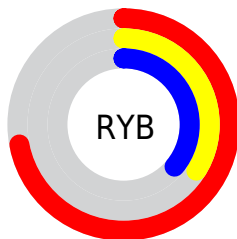
The Decimal color **12080989** is a dark color, and the websafe version is hex **CC6666**. A complement of this color would be **5748914**, and the grayscale version is **7697781**.

A 20% lighter version of the original color is **15960975**, and **8332335** is the 20% darker color. If you saturate the color by 10%, you get **12076364**, and if you desaturate by 10%, it is **12085614**.

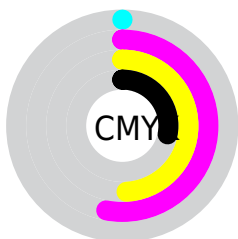
# Distribution



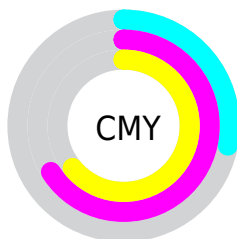
- Red (72%)
- Green (34%)
- Blue (36%)



- Red (72%)
- Yellow (34%)
- Blue (36%)



- Cyan (0%)
- Magenta (53%)
- Yellow (49%)
- Black (28%)



- Cyan (28%)
- Magenta (66%)
- Yellow (64%)

# Brightness & Saturation Gradients

These gradients show how the Decimal color 12080989 changes by changing the brightness by 10 percent. The first figure shows a shift by +10% for each color and the second figure -10%.

Similar to the brightness gradients but the following saturation gradients show a change of the Decimal color 12080989 by changing the saturation by 10% instead.



 12080989

 12080989

16777215

 10174021

 15960975

 8332335

 16754602

 6489115

 16761541

 4718592

 16768993

 3080194

 16776445

 0

 12080989

 12080989

 12076364

 12085614

 12071482

 12090496

 12066857

 12095121

 12061976

 12100002

 12058635

 12104627

 12109253

 12114134

 12118759

 12123640

# Harmonies

## Analogous

The Analogous color harmony consists of three colors that are next to each other on the color wheel.



11687809



12080989



11297342

# Triad

The Triadic color harmony groups three colors that are evenly spaced from another and form a triangle on the color wheel.



12080989



4555334



31932

# Complementary

The Complementary color scheme is a pair of colors which are on the opposite of each other on the color wheel.



12080989



5748914

# Split Complementary

Split-complementary colors differ from the complementary color scheme. The scheme consists of three colors, the original color and two neighbors of the complement color.



33965



12080989



34409

# Square

The Square scheme is like the rectangle color scheme, but the four colors are evenly spaced on the color wheel.



12080989



7371566



34702



6647993

# Rectangle

The Rectangle color scheme consists of four colors that form a rectangle on the color wheel.



12080989



10251055



34702



32697



# Sweetspot

The Sweet Spot groups the original color and five complimentary colors.



12080989



15780300



11687864



7889250



16250871



7895160



# Same Dimension

The Same Dimension uses a secret algorithm to generate beautiful new colors.



12080989



15751522



12091735



6050643



10223626



1835010



# Inverse Universe

The Inverse Universe completely reimagines the original color for something new.



12080989



15751522



5738168



6050643



10223626

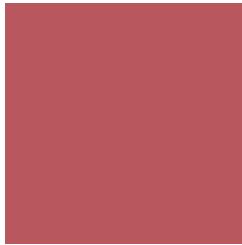


1835010



# Previews

## White Background



This preview shows how the Decimal color 12080989 looks on a white background.

## Color Contrast Check

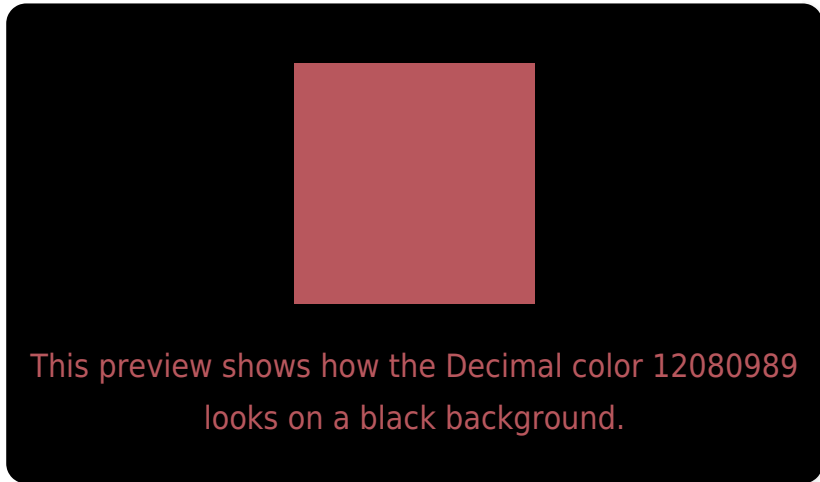
Large Text (above 18pt) WCAG AA ✓ Pass

Any Text WCAG AA ✓ Pass

Large Text (above 18pt) WCAG AAA ✓ Pass

Any Text WCAG AAA × Fail

# Black Background



## Color Contrast Check

Large Text (above 18pt) WCAG AA ✓ Pass

Any Text WCAG AA ✓ Pass

Large Text (above 18pt) WCAG AAA ✓ Pass

Any Text WCAG AAA × Fail

If you want to check with other color combinations, try the [Color Contrast Checker](#).



## Decimal 12080989 Background



This preview shows how black text looks on a background with the Decimal color 12080989.

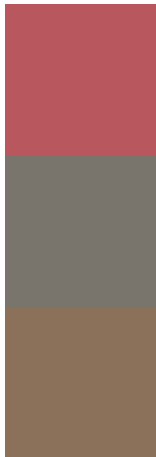


This preview shows how white text looks on a background with the Decimal color 12080989.

# Color Blindness Simulation

Color vision deficiency is a very complex topic, and I could not describe the different causes any better than Wikipedia does, so if you want to learn more, you should check out their [article about color blindness](#).

## Dichromacy



**Original Color**  
12080989

**Protanopia**  
8025452

**Deuteranopia**  
9138521



# Trichromacy



**Original Color**  
12080989

**Protanomaly**  
9529959

**Deuteranomaly**  
10184794

**Tritanomaly**  
12080989

# Monochromacy



**Original Color**  
12080989

**Achromatopsia**  
7697781

**Achromatomaly**  
9267820

# CSS Examples

## Text

The CSS property to change the color of the text to Decimal 12080989 is called "color". The color property can be set on classes, ids or directly on the HTML element.

This example shows how text in the color #B8575D looks like.

```
.text, #text, p{  
    color:#B8575D  
}
```

If you want to add a text shadow in that color use the text-shadow property, you can generate a text shadow directly with our [CSS Text Shadow Generator](#).

Here you see how black text with a 4 pixel #B8575D colored shadow looks like.

```
.shadow{ text-shadow: 4px 4px 2px #B8575D
}
```

## Border

The CSS property to change the border of an element to Decimal 12080989 is called "border". The border property can be set on classes, ids or directly on the HTML element.

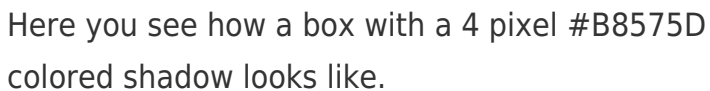
This example shows the color as border, it can be applied via the CSS property "border" or "border-color".

```
.border, #border, table{ border:4px solid
#B8575D }
```

If only the border color should be changed use the property `border-color`.

```
.border{ border-color:#B8575D }
```

If you want to add a box shadow in that color use:



Here you see how a box with a 4 pixel #B8575D colored shadow looks like.

```
.boxshadow{ -moz-box-shadow:4px 4px 4px  
4px #B8575D; -webkit-box-shadow:4px 4px  
4px 4px #B8575D; box-shadow:4px 4px 4px  
4px #B8575D }
```

# Background

The CSS property to change the background color of an element to Decimal 12080989 is called "background". The background property can be set on classes, ids or directly on the HTML element.

```
.background, #background, body{  
background:#B8575D }
```

If only the background color should be changed can be used:

```
.background{ background-color:#B8575D }
```

This example shows the color as background, it is applied via the CSS property "background".

To optimize and compress your CSS code, you can use our [online CSS compressor and optimizer](#) based on csstidy. If you want to create a linear or radial gradient as background or border, check our [CSS Gradient Generator](#).



Hey! You found this booklet interesting? Support Converting Colors with the new Membership Option!

The pro membership hides all ads, plus gives you double the colors in the color bucket, and more awesome pro features!

**[Learn more, Memberships starting at \\$2.50/m!](#)**

**Follow me  
on Twitter!**

@ConvertingColor