

Converting Colors

Decimal(12088446)

Have a look what the booklet for
Decimal(12088446) contains.

Decimal(12088446)	3
<i>Conversions</i>	4
<i>Details</i>	6
<i>Harmonies</i>	11
<i>Previews</i>	23
<i>Color Blindness Simulation</i>	26
<i>CSS Examples</i>	29

Color

Decimal(12088446)

Conversions

Conversions Part 1

Format	Color
Hex	B8747E
RGB	184, 116, 126
RGB Percent	72%, 45%, 49%
CMY	0.2784, 0.5451, 0.5059
CMYK	0.00, 0.37, 0.32, 0.28
HSL	351°, 32%, 59%
HSV	351°, 37%, 72%
XYZ	29.7785, 24.1875, 22.8378
YIQ	137.4720, 37.3180, 17.5260

Conversions

Conversions Part 2

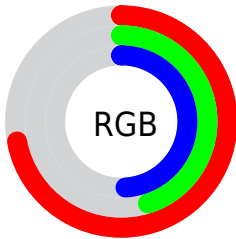
Format	Color
R_{YB}	184, 116, 126
Decimal	12088446
CIE _{Lab}	56.28, 28.06, 5.78
CIE _{LCh}	56, 28.651, 11.642
Yxy	24.1875, 0.3877, 0.3149
Android (android.graphics.Color)	4290278526 (0xFFB8747E)
YUV	137.4720, -5.6557, 40.8051
Hunter-Lab	49.1808, 22.0135, 6.8944

Details

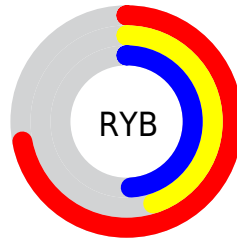
The Decimal color **12088446** is a dark color, and the websafe version is hex **996666**. A complement of this color would be **7649454**, and the grayscale version is **9079434**.

A 20% lighter version of the original color is **15903155**, and **8471117** is the 20% darker color. If you saturate the color by 10%, you get **12083822**, and if you desaturate by 10%, it is **12093070**.

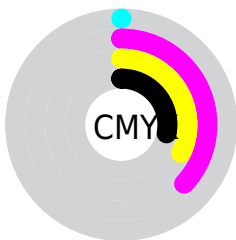
Distribution



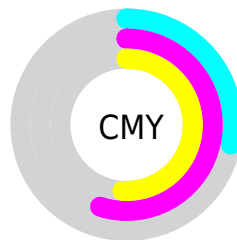
- Red (72%)
- Green (45%)
- Blue (49%)



- Red (72%)
- Yellow (45%)
- Blue (49%)



- Cyan (0%)
- Magenta (37%)
- Yellow (32%)
- Black (28%)



- Cyan (28%)
- Magenta (55%)
- Yellow (51%)

Brightness & Saturation Gradients

These gradients show how the Decimal color 12088446 changes by changing the brightness by 10 percent. The first figure shows a shift by +10% for each color and the second figure -10%.

Similar to the brightness gradients but the following saturation gradients show a change of the Decimal color 12088446 by changing the saturation by 10% instead.

 12088446

 12088446

16777215

 10247013

 15903155

 8471117

 16762062

 6695734

 16769514

 5051169

 16776703

 3407882

 1638401

 0

 12088446

 12088446

 12083822

 12093070

 12078943

 12097949

 12074319

 12102573


 12069439

 12107453

 12064816


 12112076


 12060192

 12116700

 12058651

 12121580

 12124156

 12124159

Harmonies

Analogous

The Analogous color harmony consists of three colors that are next to each other on the color wheel.



11433623



12088446



11827303

Triad

The Triadic color harmony groups three colors that are evenly spaced from another and form a triangle on the color wheel.



12088446



7573345



5017270

Complementary

The Complementary color scheme is a pair of colors which are on the opposite of each other on the color wheel.



12088446



7649454

Split Complementary

Split-complementary colors differ from the complementary color scheme. The scheme consists of three colors, the original color and two neighbors of the complement color.



3117991



12088446



5608310

Square

The Square scheme is like the rectangle color scheme, but the four colors are evenly spaced on the color wheel.



12088446



9341270



3708304



7636663

Rectangle

The Rectangle color scheme consists of four colors that form a rectangle on the color wheel.



12088446



11238748



3708304



4231346

Sweetspot

The Sweet Spot groups the original color and five complimentary colors.



12088446



15783385



11433144



7891051



16250871



7895160

Same Dimension

The Same Dimension uses a secret algorithm to generate beautiful new colors.



12088446



15763094



12094580



6050644



10223639



1835012

Inverse Universe

The Inverse Universe completely reimagines the original color for something new.



12088446



15763094



7643320



6050644



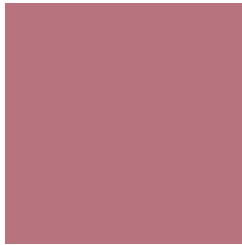
10223639



1835012

Previews

White Background



This preview shows how the Decimal color 12088446 looks on a white background.

Color Contrast Check

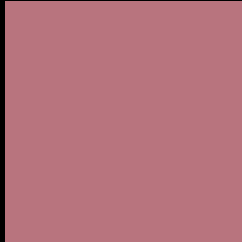
Large Text (above 18pt) WCAG AA ✓ Pass

Any Text WCAG AA ✗ Fail

Large Text (above 18pt) WCAG AAA ✗ Fail

Any Text WCAG AAA ✗ Fail

Black Background



This preview shows how the Decimal color 12088446 looks on a black background.

Color Contrast Check

Large Text (above 18pt) WCAG AA ✓ Pass

Any Text WCAG AA ✓ Pass

Large Text (above 18pt) WCAG AAA ✓ Pass

Any Text WCAG AAA × Fail

If you want to check with other color combinations, try the [Color Contrast Checker](#).

Decimal 12088446 Background



This preview shows how black text looks on a background with the Decimal color 12088446.



This preview shows how white text looks on a background with the Decimal color 12088446.

Color Blindness Simulation

Color vision deficiency is a very complex topic, and I could not describe the different causes any better than Wikipedia does, so if you want to learn more, you should check out their [article about color blindness](#).

Dichromacy





Tritanopia
12088445

Trichromacy



Original Color
12088446

Protanomaly
10125444

Deuteranomaly
10780284

Tritanomaly
12088445

Monochromacy



Original Color
12088446

Achromatopsia
9013641

Achromatomaly
10125701

CSS Examples

Text

The CSS property to change the color of the text to Decimal 12088446 is called "color". The color property can be set on classes, ids or directly on the HTML element.

This example shows how text in the color #B8747E looks like.

```
.text, #text, p{  
  color:#B8747E  
}
```

If you want to add a text shadow in that color use the text-shadow property, you can generate a text shadow directly with our [CSS Text Shadow Generator](#).

Here you see how black text with a 4 pixel #B8747E colored shadow looks like.

```
.shadow{ text-shadow: 4px 4px 2px #B8747E
}
```

Border

The CSS property to change the border of an element to Decimal 12088446 is called "border". The border property can be set on classes, ids or directly on the HTML element.

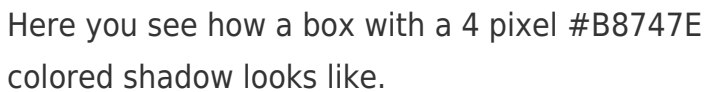
This example shows the color as border, it can be applied via the CSS property "border" or "border-color".

```
.border, #border, table{ border:4px solid
#B8747E }
```

If only the border color should be changed use the property `border-color`.

```
.border{ border-color:#B8747E }
```

If you want to add a box shadow in that color use:



Here you see how a box with a 4 pixel #B8747E colored shadow looks like.

```
.boxshadow{ -moz-box-shadow:4px 4px 4px  
4px #B8747E; -webkit-box-shadow:4px 4px  
4px 4px #B8747E; box-shadow:4px 4px 4px  
4px #B8747E }
```

Background

The CSS property to change the background color of an element to Decimal 12088446 is called "background". The background property can be set on classes, ids or directly on the HTML element.

```
.background, #background, body{  
background:#B8747E }
```

If only the background color should be changed can be used:

```
.background{ background-color:#B8747E }
```

This example shows the color as background, it is applied via the CSS property "background".

To optimize and compress your CSS code, you can use our [online CSS compressor and optimizer](#) based on csstidy. If you want to create a linear or radial gradient as background or border, check our [CSS Gradient Generator](#).

Hey! You found this booklet interesting? Support Converting Colors with the new Membership Option!

The pro membership hides all ads, plus gives you double the colors in the color bucket, and more awesome pro features!

[Learn more, Memberships starting at \\$2.50/m!](#)

**Follow me
on Twitter!**

@ConvertingColor