

Converting Colors

Decimal(12088959)

Have a look what the booklet for
Decimal(12088959) contains.

Decimal(12088959)	3
<i>Conversions</i>	4
<i>Details</i>	6
<i>Harmonies</i>	11
<i>Previews</i>	23
<i>Color Blindness Simulation</i>	26
<i>CSS Examples</i>	29

Color

Decimal(12088959)

Conversions

Conversions Part 1

Format	Color
Hex	B8767F
RGB	184, 118, 127
RGB Percent	72%, 46%, 50%
CMY	0.2784, 0.5373, 0.5020
CMYK	0.00, 0.36, 0.31, 0.28
HSL	352°, 32%, 59%
HSV	352°, 36%, 72%
XYZ	30.0764, 24.6795, 23.2571
YIQ	138.7600, 36.4470, 16.7910

Conversions

Conversions Part 2

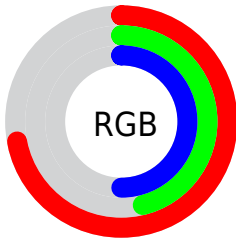
Format	Color
RYB	184, 118, 127
Decimal	12088959
CIELab	56.76, 27.09, 5.90
CIElCh	57, 27.727, 12.282
Yxy	24.6795, 0.3855, 0.3164
Android (android.graphics.Color)	4290279039 (0xFFB8767F)
YUV	138.7600, -5.7977, 39.6755
Hunter-Lab	49.6785, 21.1302, 7.0182

Details

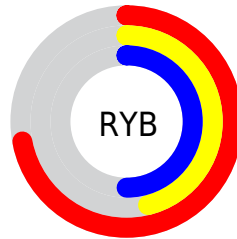
The Decimal color **12088959** is a dark color, and the websafe version is hex **996666**. A complement of this color would be **7780527**, and the grayscale version is **9145227**.

A 20% lighter version of the original color is **15838132**, and **8471630** is the 20% darker color. If you saturate the color by 10%, you get **12084335**, and if you desaturate by 10%, it is **12093583**.

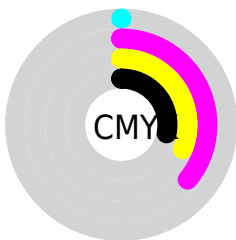
Distribution



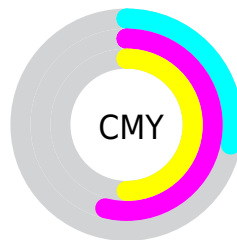
- Red (72%)
- Green (46%)
- Blue (50%)



- Red (72%)
- Yellow (46%)
- Blue (50%)



- Cyan (0%)
- Magenta (36%)
- Yellow (31%)
- Black (28%)



- Cyan (28%)
- Magenta (54%)
- Yellow (50%)

Brightness & Saturation Gradients

These gradients show how the Decimal color 12088959 changes by changing the brightness by 10 percent. The first figure shows a shift by +10% for each color and the second figure -10%.

Similar to the brightness gradients but the following saturation gradients show a change of the Decimal color 12088959 by changing the saturation by 10% instead.

 12088959

 12088959

16777215

 10247526

 15838132

 8471630

 16762575

 6761783

 16770027

 5051938

 3407884

 1703937

 0

 12088959

 12088959

 12084335

 12093583

 12079455

 12098463

 12074831

 12103087

 12069951

 12107967

 12065328


 12112590

 12060704

 12117214

 12058649

 12122094

 12124158

 12124159

Harmonies

Analogous

The Analogous color harmony consists of three colors that are next to each other on the color wheel.



11499671



12088959



11827817

Triad

The Triadic color harmony groups three colors that are evenly spaced from another and form a triangle on the color wheel.



12088959



7639140



5410742

Complementary

The Complementary color scheme is a pair of colors which are on the opposite of each other on the color wheel.



12088959



7780527

Split Complementary

Split-complementary colors differ from the complementary color scheme. The scheme consists of three colors, the original color and two neighbors of the complement color.



3642536



12088959



5739641

Square

The Square scheme is like the rectangle color scheme, but the four colors are evenly spaced on the color wheel.



12088959



9407065



4035986



7833527

Rectangle

The Rectangle color scheme consists of four colors that form a rectangle on the color wheel.



12088959



11239262



4035986



4624818

Sweetspot

The Sweet Spot groups the original color and five complimentary colors.



12088959



15783385



11433656



7891050



16250871



7895160

Same Dimension

The Same Dimension uses a secret algorithm to generate beautiful new colors.



12088959



15763863



12094838



6050644



10223637



1835012

Inverse Universe

The Inverse Universe completely reimagines the original color for something new.



12088959



15763863



7774648



6050644



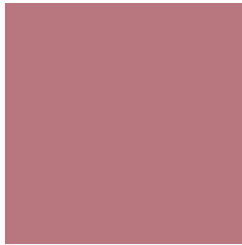
10223637



1835012

Previews

White Background



This preview shows how the Decimal color 12088959 looks on a white background.

Color Contrast Check

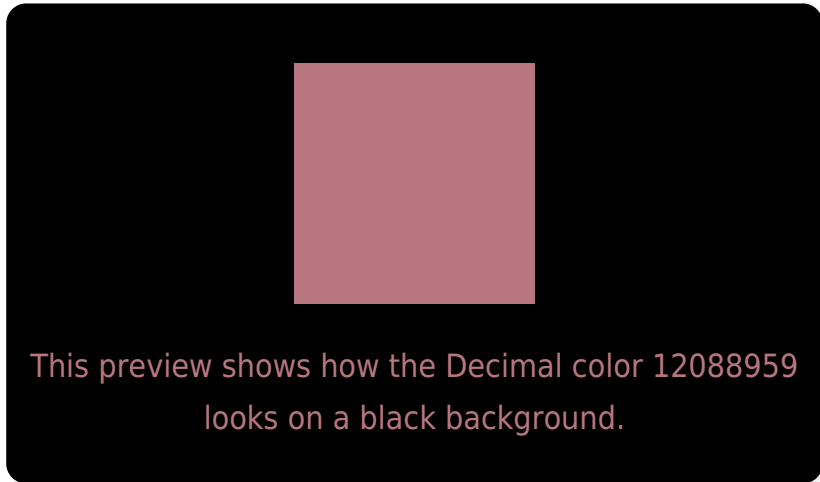
Large Text (above 18pt) WCAG AA ✓ Pass

Any Text WCAG AA ✗ Fail

Large Text (above 18pt) WCAG AAA ✗ Fail

Any Text WCAG AAA ✗ Fail

Black Background



Color Contrast Check

Large Text (above 18pt) WCAG AA ✓ Pass

Any Text WCAG AA ✓ Pass

Large Text (above 18pt) WCAG AAA ✓ Pass

Any Text WCAG AAA × Fail

If you want to check with other color combinations, try the [Color Contrast Checker](#).

Decimal 12088959 Background



This preview shows how black text looks on a background with the Decimal color 12088959.



This preview shows how white text looks on a background with the Decimal color 12088959.

Color Blindness Simulation

Color vision deficiency is a very complex topic, and I could not describe the different causes any better than Wikipedia does, so if you want to learn more, you should check out their [article about color blindness](#).

Dichromacy





Tritanopia
12088959

Trichromacy



Original Color
12088959

Protanomaly
10191237

Deuteranomaly
10846078

Tritanomaly
12088959

Monochromacy



Original Color
12088959

Achromatopsia
9145227

Achromatomaly
10191751

CSS Examples

Text

The CSS property to change the color of the text to Decimal 12088959 is called "color". The color property can be set on classes, ids or directly on the HTML element.

This example shows how text in the color #B8767F looks like.

```
.text, #text, p{  
  color:#B8767F  
}
```

If you want to add a text shadow in that color use the text-shadow property, you can generate a text shadow directly with our [CSS Text Shadow Generator](#).

Here you see how black text with a 4 pixel #B8767F colored shadow looks like.

```
.shadow{ text-shadow: 4px 4px 2px #B8767F
}
```

Border

The CSS property to change the border of an element to Decimal 12088959 is called "border". The border property can be set on classes, ids or directly on the HTML element.

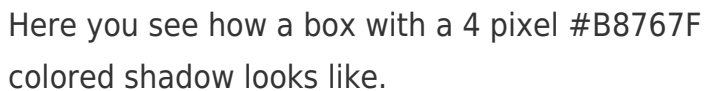
This example shows the color as border, it can be applied via the CSS property "border" or "border-color".

```
.border, #border, table{ border:4px solid
#B8767F }
```

If only the border color should be changed use the property border-color.

```
.border{ border-color:#B8767F }
```

If you want to add a box shadow in that color use:



Here you see how a box with a 4 pixel #B8767F colored shadow looks like.

```
.boxshadow{ -moz-box-shadow:4px 4px 4px  
4px #B8767F; -webkit-box-shadow:4px 4px  
4px 4px #B8767F; box-shadow:4px 4px 4px  
4px #B8767F }
```

Background

The CSS property to change the background color of an element to Decimal 12088959 is called "background". The background property can be set on classes, ids or directly on the HTML element.

```
.background, #background, body{  
background:#B8767F }
```

If only the background color should be changed can be used:

```
.background{ background-color:#B8767F }
```

This example shows the color as background, it is applied via the CSS property "background".

To optimize and compress your CSS code, you can use our [online CSS compressor and optimizer](#) based on csstidy. If you want to create a linear or radial gradient as background or border, check our [CSS Gradient Generator](#).

Hey! You found this booklet interesting? Support Converting Colors with the new Membership Option!

The pro membership hides all ads, plus gives you double the colors in the color bucket, and more awesome pro features!

[Learn more, Memberships starting at \\$2.50/m!](#)

**Follow me
on Twitter!**

@ConvertingColor