

Converting Colors

Decimal(12092250)

Have a look what the booklet for
Decimal(12092250) contains.

Decimal(12092250)	3
<i>Conversions</i>	4
<i>Details</i>	6
<i>Harmonies</i>	11
<i>Previews</i>	23
<i>Color Blindness Simulation</i>	26
<i>CSS Examples</i>	29

Color

Decimal(12092250)

Conversions

Conversions Part 1

Format	Color
Hex	B8835A
RGB	184, 131, 90
RGB Percent	72%, 51%, 35%
CMY	0.2784, 0.4863, 0.6471
CMYK	0.00, 0.29, 0.51, 0.28
HSL	26°, 40%, 54%
HSV	26°, 51%, 72%
XYZ	29.7289, 27.1611, 13.3486
YIQ	142.1730, 44.7490, -1.5150

Conversions

Conversions Part 2

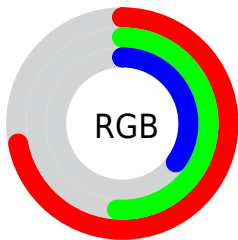
Format	Color
RYB	184, 163, 90
Decimal	12092250
CIELab	59.12, 15.60, 30.17
CIElCh	59, 33.961, 62.661
Yxy	27.1611, 0.4233, 0.3867
Android (android.graphics.Color)	4290282330 (0xFFB8835A)
YUV	142.1730, -25.7213, 36.6823
Hunter-Lab	52.1163, 10.6188, 21.2954

Details

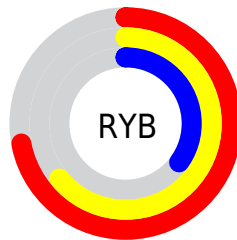
The Decimal color **12092250** is a dark color, and the websafe version is hex **CC9966**. A complement of this color would be **5935032**, and the grayscale version is **9342606**.

A 20% lighter version of the original color is **15906957**, and **8409387** is the 20% darker color. If you saturate the color by 10%, you get **12089672**, and if you desaturate by 10%, it is **12094828**.

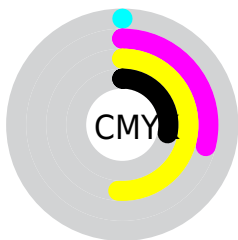
Distribution



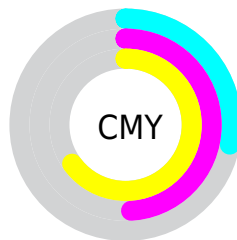
- Red (72%)
- Green (51%)
- Blue (35%)



- Red (72%)
- Yellow (64%)
- Blue (35%)



- Cyan (0%)
- Magenta (29%)
- Yellow (51%)
- Black (28%)



- Cyan (28%)
- Magenta (49%)
- Yellow (65%)

Brightness & Saturation Gradients

These gradients show how the Decimal color 12092250 changes by changing the brightness by 10 percent. The first figure shows a shift by +10% for each color and the second figure -10%.

Similar to the brightness gradients but the following saturation gradients show a change of the Decimal color 12092250 by changing the saturation by 10% instead.

 12092250

 12092250

16777215

 10250818

 15906957

 8409387

 16766119

 6634005

 16773315

 4924416

 16777183

 3215360

 16777211

 1572865

 0

 12092250

 12092250

 12089672

 12094828

12086837

12097663

12084259

12100241

12081680

12102820

12079104

12105654

12108232

12111067

12113645

12116223

Harmonies

Analogous

The Analogous color harmony consists of three colors that are next to each other on the color wheel.



13007472



12092250



10456402

Triad

The Triadic color harmony groups three colors that are evenly spaced from another and form a triangle on the color wheel.



12092250



3186320



9799361

Complementary

The Complementary color scheme is a pair of colors which are on the opposite of each other on the color wheel.



12092250



5935032

Split Complementary

Split-complementary colors differ from the complementary color scheme. The scheme consists of three colors, the original color and two neighbors of the complement color.



6787274



12092250



40365

Square

The Square scheme is like the rectangle color scheme, but the four colors are evenly spaced on the color wheel.



12092250



6069362



3054019



11959466

Rectangle

The Rectangle color scheme consists of four colors that form a rectangle on the color wheel.



12092250



9147222



3054019



8882629

Sweetspot

The Sweet Spot groups the original color and five complimentary colors.



12092250



15784908



12081807



7892066



16250871



7895160

Same Dimension

The Same Dimension uses a secret algorithm to generate beautiful new colors.



12092250



15768925



12104282



6051667



10241024



1838080

Inverse Universe

The Inverse Universe completely reimagines the original color for something new.



5935032



6140144



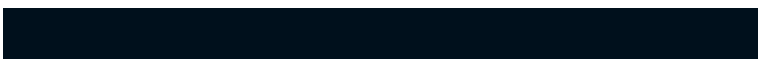
5923000



5462108



22684



4124

Previews

White Background



This preview shows how the Decimal color 12092250 looks on a white background.

Color Contrast Check

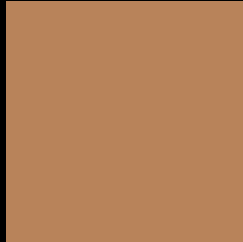
Large Text (above 18pt) WCAG AA ✓ Pass

Any Text WCAG AA × Fail

Large Text (above 18pt) WCAG AAA × Fail

Any Text WCAG AAA × Fail

Black Background



This preview shows how the Decimal color 12092250 looks on a black background.

Color Contrast Check

Large Text (above 18pt) WCAG AA ✓ Pass

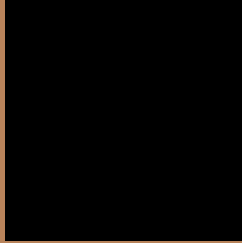
Any Text WCAG AA ✓ Pass

Large Text (above 18pt) WCAG AAA ✓ Pass

Any Text WCAG AAA × Fail

If you want to check with other color combinations, try the [Color Contrast Checker](#).

Decimal 12092250 Background



This preview shows how black text looks on a background with the Decimal color 12092250.



This preview shows how white text looks on a background with the Decimal color 12092250.

Color Blindness Simulation

Color vision deficiency is a very complex topic, and I could not describe the different causes any better than Wikipedia does, so if you want to learn more, you should check out their [article about color blindness](#).


Dichromacy



Original Color
12092250

Protanopia
10194783

Deuteranopia
11307097



Tritanopia
12352903

Trichromacy



Original Color
12092250

Protanomaly
10914653

Deuteranomaly
11568729

Tritanomaly
12287863

Monochromacy



Original Color
12092250

Achromatopsia
9342606

Achromatomaly
10324603

CSS Examples

Text

The CSS property to change the color of the text to Decimal 12092250 is called "color". The color property can be set on classes, ids or directly on the HTML element.

This example shows how text in the color #B8835A looks like.

```
.text, #text, p{  
  color:#B8835A  
}
```

If you want to add a text shadow in that color use the text-shadow property, you can generate a text shadow directly with our [CSS Text Shadow Generator](#).

Here you see how black text with a 4 pixel #B8835A colored shadow looks like.

```
.shadow{ text-shadow: 4px 4px 2px #B8835A
}
```

Border

The CSS property to change the border of an element to Decimal 12092250 is called "border". The border property can be set on classes, ids or directly on the HTML element.

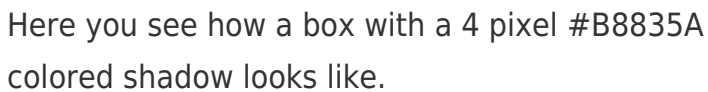
This example shows the color as border, it can be applied via the CSS property "border" or "border-color".

```
.border, #border, table{ border:4px solid
#B8835A }
```

If only the border color should be changed use the property `border-color`.

```
.border{ border-color:#B8835A }
```

If you want to add a box shadow in that color use:



Here you see how a box with a 4 pixel #B8835A colored shadow looks like.

```
.boxshadow{ -moz-box-shadow:4px 4px 4px  
4px #B8835A; -webkit-box-shadow:4px 4px  
4px 4px #B8835A; box-shadow:4px 4px 4px  
4px #B8835A }
```

Background

The CSS property to change the background color of an element to Decimal 12092250 is called "background". The background property can be set on classes, ids or directly on the HTML element.

```
.background, #background, body{  
background:#B8835A }
```

If only the background color should be changed can be used:

```
.background{ background-color:#B8835A }
```

This example shows the color as background, it is applied via the CSS property "background".

To optimize and compress your CSS code, you can use our [online CSS compressor and optimizer](#) based on csstidy. If you want to create a linear or radial gradient as background or border, check our [CSS Gradient Generator](#).

Hey! You found this booklet interesting? Support Converting Colors with the new Membership Option!

The pro membership hides all ads, plus gives you double the colors in the color bucket, and more awesome pro features!

[Learn more, Memberships starting at \\$2.50/m!](#)

**Follow me
on Twitter!**

@ConvertingColor