

# Converting Colors

Decimal(12093799)

Have a look what the booklet for  
Decimal(12093799) contains.

<b>Decimal(12093799)</b> .....	3
<i><b>Conversions</b></i> .....	4
<i><b>Details</b></i> .....	6
<i><b>Harmonies</b></i> .....	11
<i><b>Previews</b></i> .....	23
<i><b>Color Blindness Simulation</b></i> .....	26
<i><b>CSS Examples</b></i> .....	29

# Color

**Decimal(12093799)**

# Conversions

## Conversions Part 1

<b>Format</b>	<b>Color</b>
Hex	<a href="#">B88967</a>
RGB	<a href="#">184, 137, 103</a>
RGB Percent	<a href="#">72%, 54%, 40%</a>
CMY	<a href="#">0.2784, 0.4627, 0.5961</a>
CMYK	<a href="#">0.00, 0.26, 0.44, 0.28</a>
HSL	<a href="#">25°, 36%, 56%</a>
HSV	<a href="#">25°, 44%, 72%</a>
XYZ	<a href="#">31.1610, 29.0609, 16.7989</a>
YIQ	<a href="#">147.1770, 38.9260, -0.6100</a>

# Conversions

## Conversions Part 2

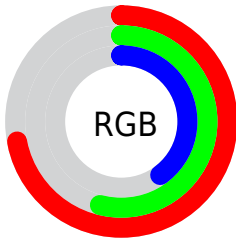
<b>Format</b>	<b>Color</b>
<a href="#">RYB</a>	<a href="#">184, 162, 103</a>
Decimal	<a href="#">12093799</a>
CIELab	<a href="#">60.84, 13.58, 25.21</a>
CIELCh	<a href="#">61, 28.633, 61.684</a>
Yxy	<a href="#">29.0609, 0.4046, 0.3773</a>
Android (android.graphics.Color)	<a href="#">4290283879 (0xFFB88967)</a>
YUV	<a href="#">147.1770, -21.7793, 32.2938</a>
Hunter-Lab	<a href="#">53.9082, 8.8405, 19.2597</a>

# Details

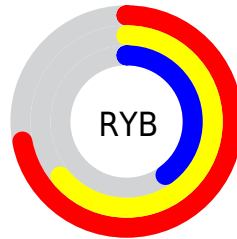
The Decimal color **12093799** is a dark color, and the websafe version is hex **CC9966**. A complement of this color would be **6788792**, and the grayscale version is **9671571**.

A 20% lighter version of the original color is **15908506**, and **8476471** is the 20% darker color. If you saturate the color by 10%, you get **12090965**, and if you desaturate by 10%, it is **12096633**.

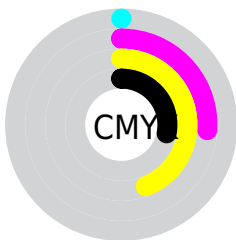
# Distribution



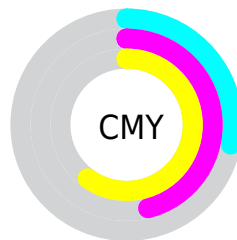
- Red (72%)
- Green (54%)
- Blue (40%)



- Red (72%)
- Yellow (64%)
- Blue (40%)



- Cyan (0%)
- Magenta (26%)
- Yellow (44%)
- Black (28%)



- Cyan (28%)
- Magenta (46%)
- Yellow (60%)

# Brightness & Saturation Gradients

These gradients show how the Decimal color 12093799 changes by changing the brightness by 10 percent. The first figure shows a shift by +10% for each color and the second figure -10%.

Similar to the brightness gradients but the following saturation gradients show a change of the Decimal color 12093799 by changing the saturation by 10% instead.



 12093799

 12093799

16777215

 10252367

 15908506

 8476471

 16767669

 6701089

 16775121

 4991244

 16777197

 3413248

 1900544

 0

 12093799

 12093799

 12090965

 12096633

12088386

12099212

12085552

12102046

12082717

12104881

12080139

12107459

12078336

12110293

12113128

12115706

12118527

# Harmonies

## Analogous

The Analogous color harmony consists of three colors that are next to each other on the color wheel.



12878457



12093799



10719840

# Triad

The Triadic color harmony groups three colors that are evenly spaced from another and form a triangle on the color wheel.



12093799



5087635



9997502

# Complementary

The Complementary color scheme is a pair of colors which are on the opposite of each other on the color wheel.



12093799



6788792

# Split Complementary

Split-complementary colors differ from the complementary color scheme. The scheme consists of three colors, the original color and two neighbors of the complement color.



7574981



12093799



4038828

# Square

The Square scheme is like the rectangle color scheme, but the four colors are evenly spaced on the color wheel.



12093799



6987386



5151935



11830443

# Rectangle

The Rectangle color scheme consists of four colors that form a rectangle on the color wheel.



12093799



9541475



5151935



9211842



# Sweetspot

The Sweet Spot groups the original color and five complimentary colors.



12093799



15785681



12085142



7892325



16250871



7895160



# Same Dimension

The Same Dimension uses a secret algorithm to generate beautiful new colors.



12093799



15771249



12104039



6051411



10240256



1838080



# Inverse Universe

The Inverse Universe completely reimagines the original color for something new.



6788792



7453424



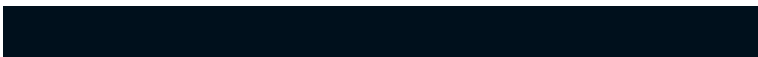
6778552



5462108



23196



4124



# Previews

## White Background



This preview shows how the Decimal color 12093799 looks on a white background.

## Color Contrast Check

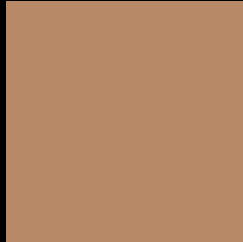
Large Text (above 18pt) WCAG AA ✓ Pass

Any Text WCAG AA ✗ Fail

Large Text (above 18pt) WCAG AAA ✗ Fail

Any Text WCAG AAA ✗ Fail

# Black Background



This preview shows how the Decimal color 12093799 looks on a black background.

## Color Contrast Check

Large Text (above 18pt) WCAG AA ✓ Pass

Any Text WCAG AA ✓ Pass

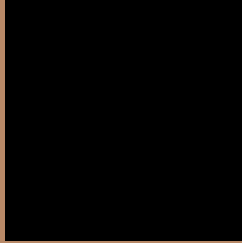
Large Text (above 18pt) WCAG AAA ✓ Pass

Any Text WCAG AAA × Fail

If you want to check with other color combinations, try the [Color Contrast Checker](#).



## Decimal 12093799 Background



This preview shows how black text looks on a background with the Decimal color 12093799.



This preview shows how white text looks on a background with the Decimal color 12093799.

# Color Blindness Simulation

Color vision deficiency is a very complex topic, and I could not describe the different causes any better than Wikipedia does, so if you want to learn more, you should check out their [article about color blindness](#).

## Dichromacy





**Tritanopia**  
12354702

# Trichromacy



**Original Color**  
12093799

**Protanomaly**  
10981226

**Deuteranomaly**  
11701350

**Tritanomaly**  
12289664

# Monochromacy



**Original Color**  
12093799

**Achromatopsia**  
9671571

**Achromatomaly**  
10522499

# CSS Examples

## Text

The CSS property to change the color of the text to Decimal 12093799 is called "color". The color property can be set on classes, ids or directly on the HTML element.

This example shows how text in the color #B88967 looks like.

```
.text, #text, p{  
    color:#B88967  
}
```

If you want to add a text shadow in that color use the text-shadow property, you can generate a text shadow directly with our [CSS Text Shadow Generator](#).

Here you see how black text with a 4 pixel #B88967 colored shadow looks like.

```
.shadow{ text-shadow: 4px 4px 2px #B88967
}
```

## Border

The CSS property to change the border of an element to Decimal 12093799 is called "border". The border property can be set on classes, ids or directly on the HTML element.

This example shows the color as border, it can be applied via the CSS property "border" or "border-color".

```
.border, #border, table{ border:4px solid
#B88967 }
```

If only the border color should be changed use the property `border-color`.

```
.border{ border-color:#B88967 }
```

If you want to add a box shadow in that color use:

Here you see how a box with a 4 pixel #B88967 colored shadow looks like.

```
.boxshadow{ -moz-box-shadow:4px 4px 4px  
4px #B88967; -webkit-box-shadow:4px 4px  
4px 4px #B88967; box-shadow:4px 4px 4px  
4px #B88967 }
```

# Background

The CSS property to change the background color of an element to Decimal 12093799 is called "background". The background property can be set on classes, ids or directly on the HTML element.

```
.background, #background, body{  
background:#B88967 }
```

If only the background color should be changed can be used:

```
.background{ background-color:#B88967 }
```

This example shows the color as background, it is applied via the CSS property "background".

To optimize and compress your CSS code, you can use our [online CSS compressor and optimizer](#) based on csstidy. If you want to create a linear or radial gradient as background or border, check our [CSS Gradient Generator](#).



Hey! You found this booklet interesting? Support Converting Colors with the new Membership Option!

The pro membership hides all ads, plus gives you double the colors in the color bucket, and more awesome pro features!

**[Learn more, Memberships starting at \\$2.50/m!](#)**

**Follow me  
on Twitter!**

@ConvertingColor