

# Converting Colors

Decimal(12093824)

Have a look what the booklet for  
Decimal(12093824) contains.

<b>Decimal(12093824)</b> .....	3
<i><b>Conversions</b></i> .....	4
<i><b>Details</b></i> .....	6
<i><b>Harmonies</b></i> .....	11
<i><b>Previews</b></i> .....	23
<i><b>Color Blindness Simulation</b></i> .....	26
<i><b>CSS Examples</b></i> .....	29

# **Color**

**Decimal(12093824)**

# Conversions

## Conversions Part 1

Format	Color
Hex	B88980
RGB	184, 137, 128
RGB Percent	72%, 54%, 50%
CMY	0.2784, 0.4627, 0.4980
CMYK	0.00, 0.26, 0.30, 0.28
HSL	10°, 28%, 61%
HSV	10°, 30%, 72%
XYZ	32.6091, 29.6402, 24.4245
YIQ	150.0270, 30.9010, 7.1650

# Conversions

## Conversions Part 2

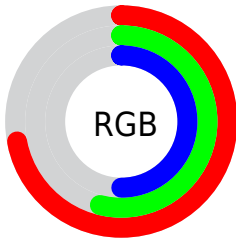
Format	Color
<a href="#">RYB</a>	<a href="#">184, 139, 128</a>
Decimal	<a href="#">12093824</a>
CIELab	<a href="#">61.34, 16.66, 11.83</a>
CIELCh	<a href="#">61, 20.428, 35.380</a>
Yxy	<a href="#">29.6402, 0.3762, 0.3420</a>
Android (android.graphics.Color)	<a href="#">4290283904</a> ( <a href="#">0xFFB88980</a> )
YUV	<a href="#">150.0270, -10.8593, 29.7943</a>
Hunter-Lab	<a href="#">54.4428, 11.6396, 11.5109</a>

# Details

The Decimal color **12093824** is a light color, and the websafe version is hex **CC9999**. A complement of this color would be **8433592**, and the grayscale version is **9868950**.

A 20% lighter version of the original color is **15843253**, and **8542031** is the 20% darker color. If you saturate the color by 10%, you get **12089966**, and if you desaturate by 10%, it is **12097682**.

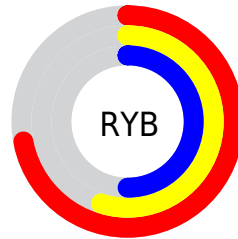
# Distribution



Red (72%)

Green (54%)

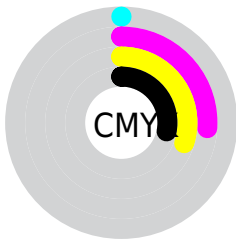
Blue (50%)



Red (72%)

Yellow (55%)

Blue (50%)

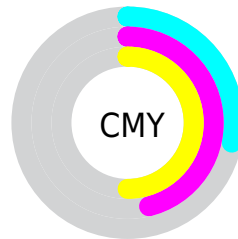


Cyan (0%)

Magenta (26%)

Yellow (30%)

Black (28%)



Cyan (28%)

Magenta (46%)

Yellow (50%)

# Brightness & Saturation Gradients

These gradients show how the Decimal color 12093824 changes by changing the brightness by 10 percent. The first figure shows a shift by +10% for each color and the second figure -10%.

Similar to the brightness gradients but the following saturation gradients show a change of the Decimal color 12093824 by changing the saturation by 10% instead.



 12093824

 12093824

16777215

 10252135

 15843253

 8542031


 16767696

 6831928

 16775149

 5122339

 3544077

 2162688

 0

 12093824

 12093824

 12089966

 12097682

 12085851

 12101797

 12081993

 12105655

 12077878

 12109770

 12074020

 12113628

 12069906

 12117742

 12066304

 12121599

 12124159

# Harmonies

## Analogous

The Analogous color harmony consists of three colors that are next to each other on the color wheel.



12093329



12093824



11505268

# Triad

The Triadic color harmony groups three colors that are evenly spaced from another and form a triangle on the color wheel.



12093824



7773573



8623544

# Complementary

The Complementary color scheme is a pair of colors which are on the opposite of each other on the color wheel.



12093824



8433592

# Split Complementary

Split-complementary colors differ from the complementary color scheme. The scheme consists of three colors, the original color and two neighbors of the complement color.



7117492



12093824



6725271

# Square

The Square scheme is like the rectangle color scheme, but the four colors are evenly spaced on the color wheel.



12093824



9083254



6397352



10194610

# Rectangle

The Rectangle color scheme consists of four colors that form a rectangle on the color wheel.



12093824



10785392



6397352



8099768

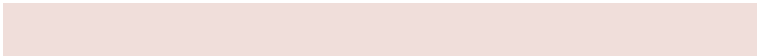


# Sweetspot

The Sweet Spot groups the original color and five complimentary colors.



12093824



15785690



12091568



7892331



16250871



7895160



# Same Dimension

The Same Dimension uses a secret algorithm to generate beautiful new colors.



12093824



15771031



12100736



6050899



10230016



1836288



# Inverse Universe

The Inverse Universe completely reimagines the original color for something new.



8433592



9953776



8426680



5462620



33692



6172



# Previews

## White Background



This preview shows how the Decimal color 12093824 looks on a white background.

## Color Contrast Check

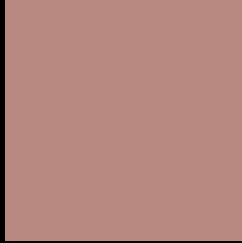
Large Text (above 18pt) WCAG AA ✓ Pass

Any Text WCAG AA ✗ Fail

Large Text (above 18pt) WCAG AAA ✗ Fail

Any Text WCAG AAA ✗ Fail

# Black Background



This preview shows how the Decimal color 12093824 looks on a black background.

## Color Contrast Check

Large Text (above 18pt) WCAG AA ✓ Pass

Any Text WCAG AA ✓ Pass

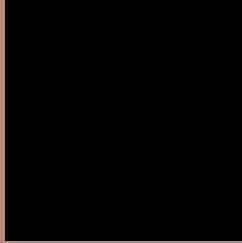
Large Text (above 18pt) WCAG AAA ✓ Pass

Any Text WCAG AAA × Fail

If you want to check with other color combinations, try the [Color Contrast Checker](#).



## Decimal 12093824 Background



This preview shows how black text looks on a background with the Decimal color 12093824.



This preview shows how white text looks on a background with the Decimal color 12093824.

# Color Blindness Simulation

Color vision deficiency is a very complex topic, and I could not describe the different causes any better than Wikipedia does, so if you want to learn more, you should check out their [article about color blindness](#).

## Dichromacy





**Tritanopia**  
12224145

# Trichromacy



**Original Color**  
12093824

**Protanomaly**  
10850436

**Deuteranomaly**  
11505023

**Tritanomaly**  
12158859

# Monochromacy



**Original Color**  
12093824

**Achromatopsia**  
9868950

**Achromatomaly**  
10654094

# CSS Examples

## Text

The CSS property to change the color of the text to Decimal 12093824 is called "color". The color property can be set on classes, ids or directly on the HTML element.

This example shows how text in the color #B88980 looks like.

```
.text, #text, p{  
  color:#B88980  
}
```

If you want to add a text shadow in that color use the text-shadow property, you can generate a text shadow directly with our [CSS Text Shadow Generator](#).

Here you see how black text with a 4 pixel #B88980 colored shadow looks like.

```
.shadow{ text-shadow: 4px 4px 2px #B88980
}
```

## Border

The CSS property to change the border of an element to Decimal 12093824 is called "border". The border property can be set on classes, ids or directly on the HTML element.

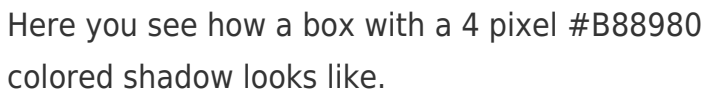
This example shows the color as border, it can be applied via the CSS property "border" or "border-color".

```
.border, #border, table{ border:4px solid
#B88980 }
```

If only the border color should be changed use the property `border-color`.

```
.border{ border-color:#B88980 }
```

If you want to add a box shadow in that color use:



Here you see how a box with a 4 pixel #B88980 colored shadow looks like.

```
.boxshadow{ -moz-box-shadow:4px 4px 4px  
4px #B88980; -webkit-box-shadow:4px 4px  
4px 4px #B88980; box-shadow:4px 4px 4px  
4px #B88980 }
```

# Background

The CSS property to change the background color of an element to Decimal 12093824 is called "background". The background property can be set on classes, ids or directly on the HTML element.

```
.background, #background, body{  
background:#B88980 }
```

If only the background color should be changed can be used:

```
.background{ background-color:#B88980 }
```

This example shows the color as background, it is applied via the CSS property "background".

To optimize and compress your CSS code, you can use our [online CSS compressor and optimizer](#) based on csstidy. If you want to create a linear or radial gradient as background or border, check our [CSS Gradient Generator](#).



Hey! You found this booklet interesting? Support Converting Colors with the new Membership Option!

The pro membership hides all ads, plus gives you double the colors in the color bucket, and more awesome pro features!

**[Learn more, Memberships starting at \\$2.50/m!](#)**

**Follow me  
on Twitter!**

@ConvertingColor