

Converting Colors

Decimal(12094350)

Have a look what the booklet for
Decimal(12094350) contains.

Decimal(12094350)	3
<i>Conversions</i>	4
<i>Details</i>	6
<i>Harmonies</i>	11
<i>Previews</i>	23
<i>Color Blindness Simulation</i>	26
<i>CSS Examples</i>	29

Color

Decimal(12094350)

Conversions

Conversions Part 1

Format	Color
Hex	B88B8E
RGB	184, 139, 142
RGB Percent	72%, 55%, 56%
CMY	0.2784, 0.4549, 0.4431
CMYK	0.00, 0.24, 0.23, 0.28
HSL	356°, 24%, 63%
HSV	356°, 24%, 72%
XYZ	33.8823, 30.6086, 29.7134
YIQ	152.7970, 25.8570, 10.4730

Conversions

Conversions Part 2

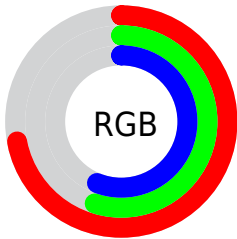
Format	Color
RYB	184, 139, 142
Decimal	12094350
CIELab	62.18, 17.56, 5.06
CIElCh	62, 18.276, 16.073
Yxy	30.6086, 0.3597, 0.3249
Android (android.graphics.Color)	4290284430 (0xFFB88B8E)
YUV	152.7970, -5.3229, 27.3650
Hunter-Lab	55.3250, 12.4986, 6.8846

Details

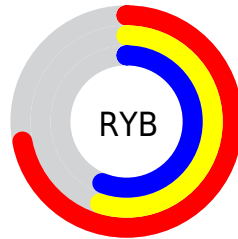
The Decimal color **12094350** is a light color, and the websafe version is hex **CC9999**. A complement of this color would be **9156789**, and the grayscale version is **10066329**.

A 20% lighter version of the original color is **15843780**, and **8542556** is the 20% darker color. If you saturate the color by 10%, you get **12089725**, and if you desaturate by 10%, it is **12098975**.

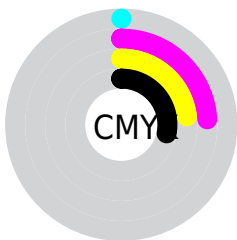
Distribution



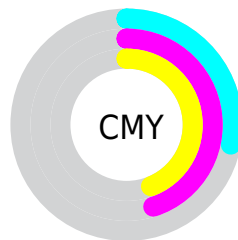
- Red (72%)
- Green (55%)
- Blue (56%)



- Red (72%)
- Yellow (55%)
- Blue (56%)



- Cyan (0%)
- Magenta (24%)
- Yellow (23%)
- Black (28%)



- Cyan (28%)
- Magenta (45%)
- Yellow (44%)

Brightness & Saturation Gradients

These gradients show how the Decimal color 12094350 changes by changing the brightness by 10 percent. The first figure shows a shift by +10% for each color and the second figure -10%.

Similar to the brightness gradients but the following saturation gradients show a change of the Decimal color 12094350 by changing the saturation by 10% instead.

 12094350

 12094350

16777215

 10318196

 15843780

 8542556

 16768480

 6832452

 16775676

 5188142

 3609882

 2359296

 0

 12094350

 12094350

 12089725

 12098975

 12084844

 12103856


 12080218

 12108482

 12075337

 12113363

 12070712

 12117988

 12066087

 12122613

 12061206

 12124159

 12058636

Harmonies

Analogous

The Analogous color harmony consists of three colors that are next to each other on the color wheel.



11701407



12094350



11898496

Triad

The Triadic color harmony groups three colors that are evenly spaced from another and form a triangle on the color wheel.



12094350



8887423



8034997

Complementary

The Complementary color scheme is a pair of colors which are on the opposite of each other on the color wheel.



12094350



9156789

Split Complementary

Split-complementary colors differ from the complementary color scheme. The scheme consists of three colors, the original color and two neighbors of the complement color.



7118509



12094350



7774094

Square

The Square scheme is like the rectangle color scheme, but the four colors are evenly spaced on the color wheel.



12094350



10131575



7053471



9409973

Rectangle

The Rectangle color scheme consists of four colors that form a rectangle on the color wheel.



12094350



11440505



7053471



7642291

Sweetspot

The Sweet Spot groups the original color and five complimentary colors.



12094350



15785952



11897784



7892591



16250871



7895160

Same Dimension

The Same Dimension uses a secret algorithm to generate beautiful new colors.



12094350



15772335



12099467



6050643



10223626



1835010

Inverse Universe

The Inverse Universe completely reimagines the original color for something new.



12094350



15772335



9151928



6050643



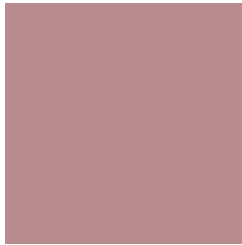
10223626



1835010

Previews

White Background



This preview shows how the Decimal color 12094350 looks on a white background.

Color Contrast Check

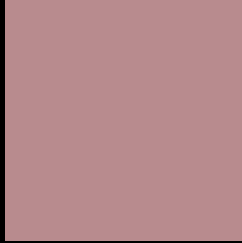
Large Text (above 18pt) WCAG AA × Fail

Any Text WCAG AA × Fail

Large Text (above 18pt) WCAG AAA × Fail

Any Text WCAG AAA × Fail

Black Background



This preview shows how the Decimal color 12094350 looks on a black background.

Color Contrast Check

Large Text (above 18pt) WCAG AA ✓ Pass

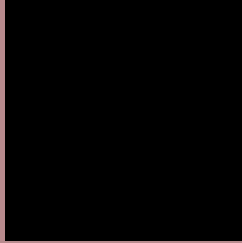
Any Text WCAG AA ✓ Pass

Large Text (above 18pt) WCAG AAA ✓ Pass

Any Text WCAG AAA ✓ Pass

If you want to check with other color combinations, try the [Color Contrast Checker](#).

Decimal 12094350 Background



This preview shows how black text looks on a background with the Decimal color 12094350.



This preview shows how white text looks on a background with the Decimal color 12094350.

Color Blindness Simulation

Color vision deficiency is a very complex topic, and I could not describe the different causes any better than Wikipedia does, so if you want to learn more, you should check out their [article about color blindness](#).


Dichromacy



Original Color
12094350

Protanopia
10131092

Deuteranopia
11112845



Tritanopia
12159637

Trichromacy



Original Color
12094350

Protanomaly
10850962

Deuteranomaly
11440013

Tritanomaly
12159634

Monochromacy



Original Color
12094350

Achromatopsia
10066329

Achromatomaly
10785941

CSS Examples

Text

The CSS property to change the color of the text to Decimal 12094350 is called "color". The color property can be set on classes, ids or directly on the HTML element.

This example shows how text in the color #B88B8E looks like.

```
.text, #text, p{  
  color:#B88B8E  
}
```

If you want to add a text shadow in that color use the text-shadow property, you can generate a text shadow directly with our [CSS Text Shadow Generator](#).

Here you see how black text with a 4 pixel #B88B8E colored shadow looks like.

```
.shadow{ text-shadow: 4px 4px 2px #B88B8E
}
```

Border

The CSS property to change the border of an element to Decimal 12094350 is called "border". The border property can be set on classes, ids or directly on the HTML element.

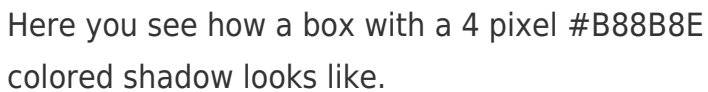
This example shows the color as border, it can be applied via the CSS property "border" or "border-color".

```
.border, #border, table{ border:4px solid
#B88B8E }
```

If only the border color should be changed use the property `border-color`.

```
.border{ border-color:#B88B8E }
```

If you want to add a box shadow in that color use:



Here you see how a box with a 4 pixel #B88B8E colored shadow looks like.

```
.boxshadow{ -moz-box-shadow:4px 4px 4px  
4px #B88B8E; -webkit-box-shadow:4px 4px  
4px 4px #B88B8E; box-shadow:4px 4px 4px  
4px #B88B8E }
```

Background

The CSS property to change the background color of an element to Decimal 12094350 is called "background". The background property can be set on classes, ids or directly on the HTML element.

```
.background, #background, body{  
background:#B88B8E }
```

If only the background color should be changed can be used:

```
.background{ background-color:#B88B8E }
```

This example shows the color as background, it is applied via the CSS property "background".

To optimize and compress your CSS code, you can use our [online CSS compressor and optimizer](#) based on csstidy. If you want to create a linear or radial gradient as background or border, check our [CSS Gradient Generator](#).

Hey! You found this booklet interesting? Support Converting Colors with the new Membership Option!

The pro membership hides all ads, plus gives you double the colors in the color bucket, and more awesome pro features!

[Learn more, Memberships starting at \\$2.50/m!](#)

**Follow me
on Twitter!**

@ConvertingColor