

Converting Colors

Decimal(12094861)

Have a look what the booklet for
Decimal(12094861) contains.

Decimal(12094861)	3
<i>Conversions</i>	4
<i>Details</i>	6
<i>Harmonies</i>	11
<i>Previews</i>	23
<i>Color Blindness Simulation</i>	26
<i>CSS Examples</i>	29

Color

Decimal(12094861)

Conversions

Conversions Part 1

Format	Color
Hex	B88D8D
RGB	184, 141, 141
RGB Percent	72%, 55%, 55%
CMY	0.2784, 0.4471, 0.4471
CMYK	0.00, 0.23, 0.23, 0.28
HSL	0°, 23%, 64%
HSV	0°, 23%, 72%
XYZ	34.0998, 31.1632, 29.4171
YIQ	153.8570, 25.6280, 9.1160

Conversions

Conversions Part 2

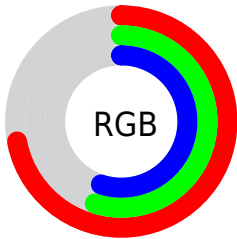
Format	Color
RYB	184, 141, 141
Decimal	12094861
CIELab	62.65, 16.30, 6.30
CIELCh	63, 17.471, 21.142
Yxy	31.1632, 0.3602, 0.3291
Android (android.graphics.Color)	4290284941 (0xFFB88D8D)
YUV	153.8570, -6.3385, 26.4354
Hunter-Lab	55.8240, 11.3437, 7.8332

Details

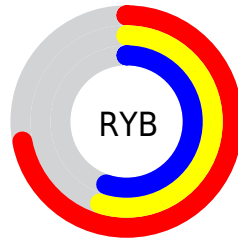
The Decimal color **12094861** is a light color, and the websafe version is hex **CC9999**. A complement of this color would be **9287864**, and the grayscale version is **10132122**.

A 20% lighter version of the original color is **15844291**, and **8543067** is the 20% darker color. If you saturate the color by 10%, you get **12090235**, and if you desaturate by 10%, it is **12099487**.

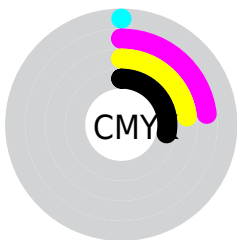
Distribution



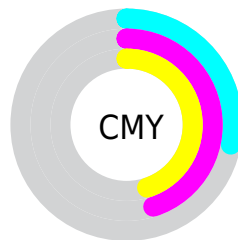
- Red (72%)
- Green (55%)
- Blue (55%)



- Red (72%)
- Yellow (55%)
- Blue (55%)



- Cyan (0%)
- Magenta (23%)
- Yellow (23%)
- Black (28%)



- Cyan (28%)
- Magenta (45%)
- Yellow (45%)

Brightness & Saturation Gradients

These gradients show how the Decimal color 12094861 changes by changing the brightness by 10 percent. The first figure shows a shift by +10% for each color and the second figure -10%.

Similar to the brightness gradients but the following saturation gradients show a change of the Decimal color 12094861 by changing the saturation by 10% instead.



12094861



12094861

16777215



10318707



15844291



8543067



16768990



6832964



16776187



5188653



3610393



2359296



0



12094861



12094861




12090235



12099487

 12085352

 12104370

 12080726

 12108996

 12075843

 12113879

 12071217

 12118505

 12066591

 12123131

 12061708

 12124159

 12058624

Harmonies

Analogous

The Analogous color harmony consists of three colors that are next to each other on the color wheel.



11832733



12094861



11833472

Triad

The Triadic color harmony groups three colors that are evenly spaced from another and form a triangle on the color wheel.



12094861



8822404



8428214

Complementary

The Complementary color scheme is a pair of colors which are on the opposite of each other on the color wheel.



12094861



9287864

Split Complementary

Split-complementary colors differ from the complementary color scheme. The scheme consists of three colors, the original color and two neighbors of the complement color.



7446191



12094861



7774354

Square

The Square scheme is like the rectangle color scheme, but the four colors are evenly spaced on the color wheel.



12094861



10001018



7250082



9737652

Rectangle

The Rectangle color scheme consists of four colors that form a rectangle on the color wheel.



12094861



11309947



7250082



8035508

Sweetspot

The Sweet Spot groups the original color and five complimentary colors.



12094861



15785951



12094904



7892590



16250871



7895160

Same Dimension

The Same Dimension uses a secret algorithm to generate beautiful new colors.



12094861



15773101



12100493



6050643



10223616



1835008

Inverse Universe

The Inverse Universe completely reimagines the original color for something new.



9287864



11399408



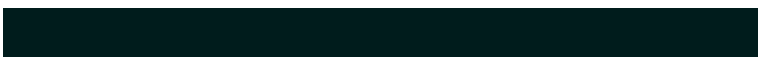
9282488



5463132



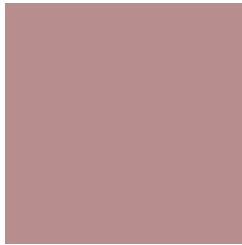
40092



7196

Previews

White Background



This preview shows how the Decimal color 12094861 looks on a white background.

Color Contrast Check

Large Text (above 18pt) WCAG AA × Fail

Any Text WCAG AA × Fail

Large Text (above 18pt) WCAG AAA × Fail

Any Text WCAG AAA × Fail

Black Background



This preview shows how the Decimal color 12094861 looks on a black background.

Color Contrast Check

Large Text (above 18pt) WCAG AA ✓ Pass

Any Text WCAG AA ✓ Pass

Large Text (above 18pt) WCAG AAA ✓ Pass

Any Text WCAG AAA ✓ Pass

If you want to check with other color combinations, try the [Color Contrast Checker](#).

Decimal 12094861 Background



This preview shows how black text looks on a background with the Decimal color 12094861.



This preview shows how white text looks on a background with the Decimal color 12094861.

Color Blindness Simulation

Color vision deficiency is a very complex topic, and I could not describe the different causes any better than Wikipedia does, so if you want to learn more, you should check out their [article about color blindness](#).

Dichromacy





Tritanopia
12160150

Trichromacy



Original Color
12094861

Protanomaly
10916753

Deuteranomaly
11571340

Tritanomaly
12160147

Monochromacy



Original Color
12094861

Achromatopsia
10132122

Achromatomaly
10851733

CSS Examples

Text

The CSS property to change the color of the text to Decimal 12094861 is called "color". The color property can be set on classes, ids or directly on the HTML element.

This example shows how text in the color #B88D8D looks like.

```
.text, #text, p{  
    color:#B88D8D  
}
```

If you want to add a text shadow in that color use the text-shadow property, you can generate a text shadow directly with our [CSS Text Shadow Generator](#).

Here you see how black text with a 4 pixel #B88D8D colored shadow looks like.

```
.shadow{ text-shadow: 4px 4px 2px #B88D8D
}
```

Border

The CSS property to change the border of an element to Decimal 12094861 is called "border". The border property can be set on classes, ids or directly on the HTML element.

This example shows the color as border, it can be applied via the CSS property "border" or "border-color".

```
.border, #border, table{ border:4px solid
#B88D8D }
```

If only the border color should be changed use the property `border-color`.

```
.border{ border-color:#B88D8D }
```

If you want to add a box shadow in that color use:

Here you see how a box with a 4 pixel #B88D8D colored shadow looks like.

```
.boxshadow{ -moz-box-shadow:4px 4px 4px  
4px #B88D8D; -webkit-box-shadow:4px 4px  
4px 4px #B88D8D; box-shadow:4px 4px 4px  
4px #B88D8D }
```

Background

The CSS property to change the background color of an element to Decimal 12094861 is called "background". The background property can be set on classes, ids or directly on the HTML element.

```
.background, #background, body{  
background:#B88D8D }
```

If only the background color should be changed can be used:

```
.background{ background-color:#B88D8D }
```

This example shows the color as background, it is applied via the CSS property "background".

To optimize and compress your CSS code, you can use our [online CSS compressor and optimizer](#) based on csstidy. If you want to create a linear or radial gradient as background or border, check our [CSS Gradient Generator](#).

Hey! You found this booklet interesting? Support Converting Colors with the new Membership Option!

The pro membership hides all ads, plus gives you double the colors in the color bucket, and more awesome pro features!

[Learn more, Memberships starting at \\$2.50/m!](#)

**Follow me
on Twitter!**

@ConvertingColor