

Converting Colors

Decimal(12095118)

Have a look what the booklet for
Decimal(12095118) contains.

Decimal(12095118)	3
<i>Conversions</i>	4
<i>Details</i>	6
<i>Harmonies</i>	11
<i>Previews</i>	23
<i>Color Blindness Simulation</i>	26
<i>CSS Examples</i>	29

Color

Decimal(12095118)

Conversions

Conversions Part 1

Format	Color
Hex	B88E8E
RGB	184, 142, 142
RGB Percent	72%, 56%, 56%
CMY	0.2784, 0.4431, 0.4431
CMYK	0.00, 0.23, 0.23, 0.28
HSL	0°, 23%, 64%
HSV	0°, 23%, 72%
XYZ	34.3227, 31.4893, 29.8602
YIQ	154.5580, 25.0320, 8.9040

Conversions

Conversions Part 2

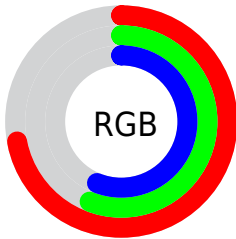
Format	Color
RYB	184, 142, 142
Decimal	12095118
CIELab	62.92, 15.89, 6.13
CIELCh	63, 17.029, 21.087
Yxy	31.4893, 0.3588, 0.3291
Android (android.graphics.Color)	4290285198 (0xFFB88E8E)
YUV	154.5580, -6.1911, 25.8206
Hunter-Lab	56.1154, 10.9766, 7.7312

Details

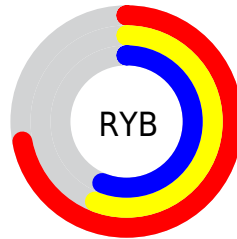
The Decimal color **12095118** is a light color, and the websafe version is hex **CC9999**. A complement of this color would be **9353400**, and the grayscale version is **10197915**.

A 20% lighter version of the original color is **15844548**, and **8543324** is the 20% darker color. If you saturate the color by 10%, you get **12090492**, and if you desaturate by 10%, it is **12099744**.

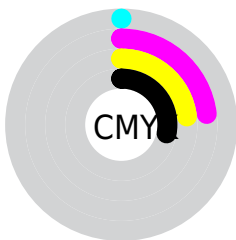
Distribution



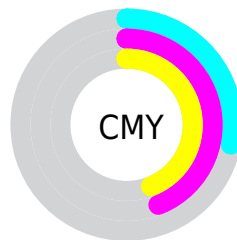
- Red (72%)
- Green (56%)
- Blue (56%)



- Red (72%)
- Yellow (56%)
- Blue (56%)



- Cyan (0%)
- Magenta (23%)
- Yellow (23%)
- Black (28%)



- Cyan (28%)
- Magenta (44%)
- Yellow (44%)

Brightness & Saturation Gradients

These gradients show how the Decimal color 12095118 changes by changing the brightness by 10 percent. The first figure shows a shift by +10% for each color and the second figure -10%.

Similar to the brightness gradients but the following saturation gradients show a change of the Decimal color 12095118 by changing the saturation by 10% instead.

 12095118

 12095118

16777215

 10318964

 15844548

 8543324

 16769248

 6833220

 16776700

 5188910

 3676186

 2359296

 0


 12095118

 12095118

 12090492

 12099744

 12085609

 12104627

 12080983

 12109253


 12076100

 12114136

 12071474

 12118762

 12066848

 12123388

 12061965

 12124159

 12058624

Harmonies

Analogous

The Analogous color harmony consists of three colors that are next to each other on the color wheel.



11832989



12095118



11833729

Triad

The Triadic color harmony groups three colors that are evenly spaced from another and form a triangle on the color wheel.



12095118



8888197



8494006

Complementary

The Complementary color scheme is a pair of colors which are on the opposite of each other on the color wheel.



12095118



9353400

Split Complementary

Split-complementary colors differ from the complementary color scheme. The scheme consists of three colors, the original color and two neighbors of the complement color.



7577519



12095118



7905683

Square

The Square scheme is like the rectangle color scheme, but the four colors are evenly spaced on the color wheel.



12095118



10066812



7381411



9803444

Rectangle

The Rectangle color scheme consists of four colors that form a rectangle on the color wheel.



12095118



11375740



7381411



8166580

Sweetspot

The Sweet Spot groups the original color and five complimentary colors.



12095118



15785951



12095160



7892590



16250871



7895160

Same Dimension

The Same Dimension uses a secret algorithm to generate beautiful new colors.



12095118



15773615



12100494



6050643



10223616



1835008

Inverse Universe

The Inverse Universe completely reimagines the original color for something new.



9353400



11530480



9348024



5463132



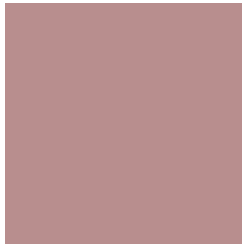
40092



7196

Previews

White Background



This preview shows how the Decimal color 12095118 looks on a white background.

Color Contrast Check

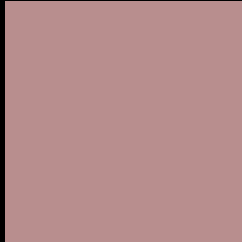
Large Text (above 18pt) WCAG AA × Fail

Any Text WCAG AA × Fail

Large Text (above 18pt) WCAG AAA × Fail

Any Text WCAG AAA × Fail

Black Background



This preview shows how the Decimal color 12095118 looks on a black background.

Color Contrast Check

Large Text (above 18pt) WCAG AA ✓ Pass

Any Text WCAG AA ✓ Pass

Large Text (above 18pt) WCAG AAA ✓ Pass

Any Text WCAG AAA ✓ Pass

If you want to check with other color combinations, try the [Color Contrast Checker](#).

Decimal 12095118 Background



This preview shows how black text looks on a background with the Decimal color 12095118.



This preview shows how white text looks on a background with the Decimal color 12095118.

Color Blindness Simulation

Color vision deficiency is a very complex topic, and I could not describe the different causes any better than Wikipedia does, so if you want to learn more, you should check out their [article about color blindness](#).


Dichromacy



Original Color
12095118

Protanopia
10262675

Deuteranopia
11244429



Tritanopia
12160407

Trichromacy



Original Color
12095118

Protanomaly
10917009

Deuteranomaly
11571597

Tritanomaly
12160404

Monochromacy



Original Color
12095118

Achromatopsia
10197915

Achromatomaly
10917526

CSS Examples

Text

The CSS property to change the color of the text to Decimal 12095118 is called "color". The color property can be set on classes, ids or directly on the HTML element.

This example shows how text in the color #B88E8E looks like.

```
.text, #text, p{  
    color:#B88E8E  
}
```

If you want to add a text shadow in that color use the text-shadow property, you can generate a text shadow directly with our [CSS Text Shadow Generator](#).

Here you see how black text with a 4 pixel #B88E8E colored shadow looks like.

```
.shadow{ text-shadow: 4px 4px 2px #B88E8E
}
```

Border

The CSS property to change the border of an element to Decimal 12095118 is called "border". The border property can be set on classes, ids or directly on the HTML element.

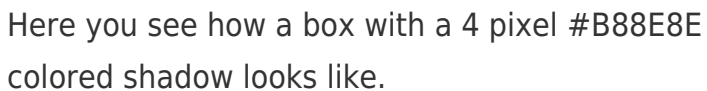
This example shows the color as border, it can be applied via the CSS property "border" or "border-color".

```
.border, #border, table{ border:4px solid
#B88E8E }
```

If only the border color should be changed use the property `border-color`.

```
.border{ border-color:#B88E8E }
```

If you want to add a box shadow in that color use:



Here you see how a box with a 4 pixel #B88E8E colored shadow looks like.

```
.boxshadow{ -moz-box-shadow:4px 4px 4px  
4px #B88E8E; -webkit-box-shadow:4px 4px  
4px 4px #B88E8E; box-shadow:4px 4px 4px  
4px #B88E8E }
```

Background

The CSS property to change the background color of an element to Decimal 12095118 is called "background". The background property can be set on classes, ids or directly on the HTML element.

```
.background, #background, body{  
background:#B88E8E }
```

If only the background color should be changed can be used:

```
.background{ background-color:#B88E8E }
```

This example shows the color as background, it is applied via the CSS property "background".

To optimize and compress your CSS code, you can use our [online CSS compressor and optimizer](#) based on csstidy. If you want to create a linear or radial gradient as background or border, check our [CSS Gradient Generator](#).

Hey! You found this booklet interesting? Support Converting Colors with the new Membership Option!

The pro membership hides all ads, plus gives you double the colors in the color bucket, and more awesome pro features!

[Learn more, Memberships starting at \\$2.50/m!](#)

**Follow me
on Twitter!**

@ConvertingColor