

# Converting Colors

Decimal(12095636)

Have a look what the booklet for  
Decimal(12095636) contains.

<b>Decimal(12095636)</b> .....	3
<i><b>Conversions</b></i> .....	4
<i><b>Details</b></i> .....	6
<i><b>Harmonies</b></i> .....	11
<i><b>Previews</b></i> .....	23
<i><b>Color Blindness Simulation</b></i> .....	26
<i><b>CSS Examples</b></i> .....	29

# **Color**

**Decimal(12095636)**

# Conversions

## Conversions Part 1

Format	Color
Hex	B89094
RGB	184, 144, 148
RGB Percent	72%, 56%, 58%
CMY	0.2784, 0.4353, 0.4196
CMYK	0.00, 0.22, 0.20, 0.28
HSL	354°, 22%, 64%
HSV	354°, 22%, 72%
XYZ	35.0857, 32.2750, 32.3975
YIQ	156.4160, 22.5560, 9.7240

# Conversions

## Conversions Part 2

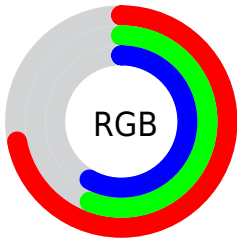
<b>Format</b>	<b>Color</b>
<a href="#">RYB</a>	<a href="#">184, 144, 148</a>
Decimal	<a href="#">12095636</a>
CIELab	<a href="#">63.57, 15.70, 3.67</a>
CIELCh	<a href="#">64, 16.125, 13.150</a>
Yxy	<a href="#">32.2750, 0.3517, 0.3235</a>
Android (android.graphics.Color)	<a href="#">4290285716 (0xFFB89094)</a>
YUV	<a href="#">156.4160, -4.1491, 24.1912</a>
Hunter-Lab	<a href="#">56.8111, 10.8197, 5.9567</a>

# Details

The Decimal color **12095636** is a light color, and the websafe version is hex **CC9999**. A complement of this color would be **9484468**, and the grayscale version is **10263708**.

A 20% lighter version of the original color is **15845066**, and **8543585** is the 20% darker color. If you saturate the color by 10%, you get **12091011**, and if you desaturate by 10%, it is **12100261**.

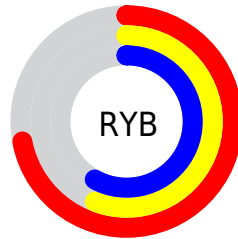
# Distribution



Red (72%)

Green (56%)

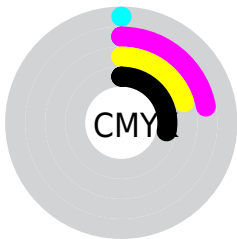
Blue (58%)



Red (72%)

Yellow (56%)

Blue (58%)

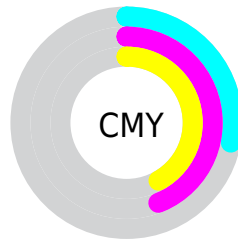


Cyan (0%)

Magenta (22%)

Yellow (20%)

Black (28%)



Cyan (28%)

Magenta (44%)

Yellow (42%)

# Brightness & Saturation Gradients

These gradients show how the Decimal color 12095636 changes by changing the brightness by 10 percent. The first figure shows a shift by +10% for each color and the second figure -10%.

Similar to the brightness gradients but the following saturation gradients show a change of the Decimal color 12095636 by changing the saturation by 10% instead.



 12095636

 12095636

16777215

 10319482

 15845066

 8543585

 16769766

 6899274

 5254963

 3676702

 2359301

 0

 12095636

 12095636

 12091011

 12100261

 12086131

 12105141

 12081506

 12109766

 12076626

 12114646

 12072001

 12119271

 12067377

 12123895

 12062496

 12124159

 12058642

# Harmonies

## Analogous

The Analogous color harmony consists of three colors that are next to each other on the color wheel.



11702691



12095636



11965063

# Triad

The Triadic color harmony groups three colors that are evenly spaced from another and form a triangle on the color wheel.



12095636



9346949



8429237

# Complementary

The Complementary color scheme is a pair of colors which are on the opposite of each other on the color wheel.



12095636



9484468

# Split Complementary

Split-complementary colors differ from the complementary color scheme. The scheme consists of three colors, the original color and two neighbors of the complement color.



7709101



12095636



8364689

# Square

The Square scheme is like the rectangle color scheme, but the four colors are evenly spaced on the color wheel.



12095636



10460030



7709344



9607606

# Rectangle

The Rectangle color scheme consists of four colors that form a rectangle on the color wheel.



12095636



11638145



7709344



8101811



# Sweetspot

The Sweet Spot groups the original color and five complimentary colors.



12095636



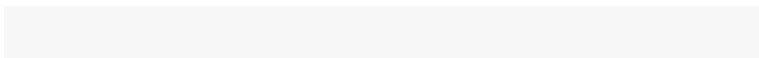
15785953



11833528



7892591



16250871



7895160



# Same Dimension

The Same Dimension uses a secret algorithm to generate beautiful new colors.



12095636



15774136



12099728



6050644



10223632



1835011



# Inverse Universe

The Inverse Universe completely reimagines the original color for something new.



12095636



15774136



9480376



6050644



10223632

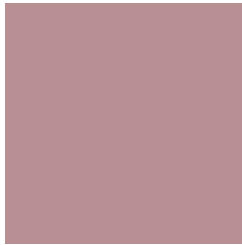


1835011



# Previews

## White Background



This preview shows how the Decimal color 12095636 looks on a white background.

## Color Contrast Check

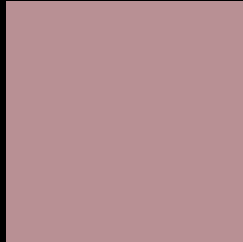
Large Text (above 18pt) WCAG AA × Fail

Any Text WCAG AA × Fail

Large Text (above 18pt) WCAG AAA × Fail

Any Text WCAG AAA × Fail

# Black Background



This preview shows how the Decimal color 12095636 looks on a black background.

## Color Contrast Check

Large Text (above 18pt) WCAG AA ✓ Pass

Any Text WCAG AA ✓ Pass

Large Text (above 18pt) WCAG AAA ✓ Pass

Any Text WCAG AAA ✓ Pass

If you want to check with other color combinations, try the [Color Contrast Checker](#).



## Decimal 12095636 Background



This preview shows how black text looks on a background with the Decimal color 12095636.



This preview shows how white text looks on a background with the Decimal color 12095636.

# Color Blindness Simulation

Color vision deficiency is a very complex topic, and I could not describe the different causes any better than Wikipedia does, so if you want to learn more, you should check out their [article about color blindness](#).


## Dichromacy



**Original Color**  
12095636

**Protanopia**  
10328473

**Deuteranopia**  
11310483



**Tritanopia**  
12160922

# Trichromacy



**Original Color**  
12095636

**Protanomaly**  
10983063

**Deuteranomaly**  
11572115

**Tritanomaly**  
12160920

# Monochromacy



**Original Color**  
12095636

**Achromatopsia**  
10263708

**Achromatomaly**  
10918041

# CSS Examples

## Text

The CSS property to change the color of the text to Decimal 12095636 is called "color". The color property can be set on classes, ids or directly on the HTML element.

This example shows how text in the color #B89094 looks like.

```
.text, #text, p{  
  color:#B89094  
}
```

If you want to add a text shadow in that color use the text-shadow property, you can generate a text shadow directly with our [CSS Text Shadow Generator](#).

Here you see how black text with a 4 pixel #B89094 colored shadow looks like.

```
.shadow{ text-shadow: 4px 4px 2px #B89094
}
```

## Border

The CSS property to change the border of an element to Decimal 12095636 is called "border". The border property can be set on classes, ids or directly on the HTML element.

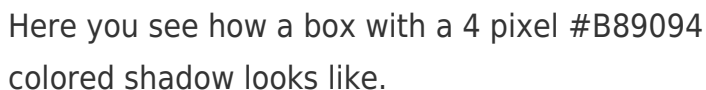
This example shows the color as border, it can be applied via the CSS property "border" or "border-color".

```
.border, #border, table{ border:4px solid
#B89094 }
```

If only the border color should be changed use the property `border-color`.

```
.border{ border-color:#B89094 }
```

If you want to add a box shadow in that color use:



Here you see how a box with a 4 pixel #B89094 colored shadow looks like.

```
.boxshadow{ -moz-box-shadow:4px 4px 4px  
4px #B89094; -webkit-box-shadow:4px 4px  
4px 4px #B89094; box-shadow:4px 4px 4px  
4px #B89094 }
```

# Background

The CSS property to change the background color of an element to Decimal 12095636 is called "background". The background property can be set on classes, ids or directly on the HTML element.

```
.background, #background, body{  
background:#B89094 }
```

If only the background color should be changed can be used:

```
.background{ background-color:#B89094 }
```

This example shows the color as background, it is applied via the CSS property "background".

To optimize and compress your CSS code, you can use our [online CSS compressor and optimizer](#) based on csstidy. If you want to create a linear or radial gradient as background or border, check our [CSS Gradient Generator](#).



Hey! You found this booklet interesting? Support Converting Colors with the new Membership Option!

The pro membership hides all ads, plus gives you double the colors in the color bucket, and more awesome pro features!

**[Learn more, Memberships starting at \\$2.50/m!](#)**

**Follow me  
on Twitter!**

@ConvertingColor