

# Converting Colors

Decimal(12095846)

Have a look what the booklet for  
Decimal(12095846) contains.

<b>Decimal(12095846)</b> .....	3
<i><b>Conversions</b></i> .....	4
<i><b>Details</b></i> .....	6
<i><b>Harmonies</b></i> .....	11
<i><b>Previews</b></i> .....	23
<i><b>Color Blindness Simulation</b></i> .....	26
<i><b>CSS Examples</b></i> .....	29

# **Color**

**Decimal(12095846)**

# Conversions

## Conversions Part 1

Format	Color
Hex	B89166
RGB	184, 145, 102
RGB Percent	72%, 57%, 40%
CMY	0.2784, 0.4314, 0.6000
CMYK	0.00, 0.21, 0.45, 0.28
HSL	31°, 37%, 56%
HSV	31°, 45%, 72%
XYZ	32.2908, 31.4005, 16.9294
YIQ	151.7590, 37.0470, -5.1050

# Conversions

## Conversions Part 2

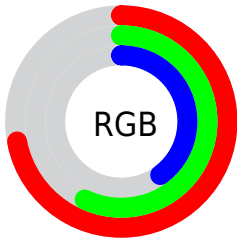
<b>Format</b>	<b>Color</b>
<a href="#">RYB</a>	<a href="#">176, 184, 102</a>
Decimal	<a href="#">12095846</a>
CIELab	<a href="#">62.84, 9.04, 28.39</a>
CIELCh	<a href="#">63, 29.798, 72.339</a>
Yxy	<a href="#">31.4005, 0.4005, 0.3895</a>
Android (android.graphics.Color)	<a href="#">4290285926 (0xFFB89166)</a>
YUV	<a href="#">151.7590, -24.5312, 28.2754</a>
Hunter-Lab	<a href="#">56.0361, 4.7975, 21.3129</a>

# Details

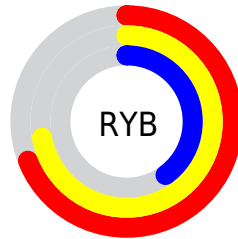
The Decimal color **12095846** is a dark color, and the websafe version is hex **CC9966**. A complement of this color would be **6720952**, and the grayscale version is **10000536**.

A 20% lighter version of the original color is **15910809**, and **8478518** is the 20% darker color. If you saturate the color by 10%, you get **12093524**, and if you desaturate by 10%, it is **12098168**.

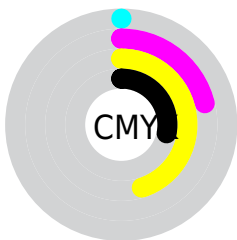
# Distribution



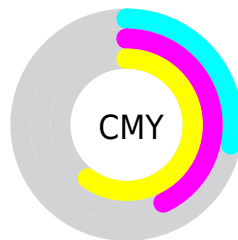
- Red (72%)
- Green (57%)
- Blue (40%)



- Red (69%)
- Yellow (72%)
- Blue (40%)



- Cyan (0%)
- Magenta (21%)
- Yellow (45%)
- Black (28%)



- Cyan (28%)
- Magenta (43%)
- Yellow (60%)

# Brightness & Saturation Gradients

These gradients show how the Decimal color 12095846 changes by changing the brightness by 10 percent. The first figure shows a shift by +10% for each color and the second figure -10%.

Similar to the brightness gradients but the following saturation gradients show a change of the Decimal color 12095846 by changing the saturation by 10% instead.



 12095846

 12095846

16777215

 10254158

 15910809

 8478518

 16769972

 6768416

 16777168

 5058825

 16777197

 3415040

 1901312

 0

 12095846

 12095846

 12093524

 12098168

12091201

12100491

12089135

12102557

12086812

12104880

12084490

12107202

12083200

12109524

12111591

12113913

12116223

# Harmonies

## Analogous

The Analogous color harmony consists of three colors that are next to each other on the color wheel.



13142390



12095846



10459748

# Triad

The Triadic color harmony groups three colors that are evenly spaced from another and form a triangle on the color wheel.



12095846



4630434



11111871

# Complementary

The Complementary color scheme is a pair of colors which are on the opposite of each other on the color wheel.



12095846



6720952

# Split Complementary

Split-complementary colors differ from the complementary color scheme. The scheme consists of three colors, the original color and two neighbors of the complement color.



8755147



12095846



4236731

# Square

The Square scheme is like the rectangle color scheme, but the four colors are evenly spaced on the color wheel.



12095846



6464903



6070218



12748457

# Rectangle

The Rectangle color scheme consists of four colors that form a rectangle on the color wheel.



12095846



9215851



6070218



10391749

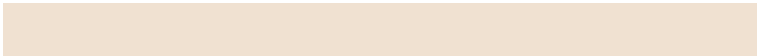


# Sweetspot

The Sweet Spot groups the original color and five complimentary colors.



12095846



15786449



12084878



7892837



16250871



7895160



# Same Dimension

The Same Dimension uses a secret algorithm to generate beautiful new colors.



12095846



15774577



12040294



6051667



10244608



1838848



# Inverse Universe

The Inverse Universe completely reimagines the original color for something new.



6720952



7450096



6776504



5461852



19100

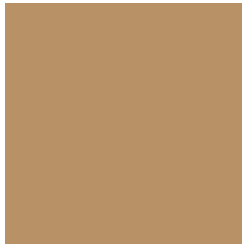


3356



# Previews

## White Background



This preview shows how the Decimal color 12095846 looks on a white background.

## Color Contrast Check

Large Text (above 18pt) WCAG AA × Fail

Any Text WCAG AA × Fail

Large Text (above 18pt) WCAG AAA × Fail

Any Text WCAG AAA × Fail

# Black Background



This preview shows how the Decimal color 12095846 looks on a black background.

## Color Contrast Check

Large Text (above 18pt) WCAG AA ✓ Pass

Any Text WCAG AA ✓ Pass

Large Text (above 18pt) WCAG AAA ✓ Pass

Any Text WCAG AAA ✓ Pass

If you want to check with other color combinations, try the [Color Contrast Checker](#).



## Decimal 12095846 Background



This preview shows how black text looks on a background with the Decimal color 12095846.




This preview shows how white text looks on a background with the Decimal color 12095846.

# Color Blindness Simulation

Color vision deficiency is a very complex topic, and I could not describe the different causes any better than Wikipedia does, so if you want to learn more, you should check out their [article about color blindness](#).

## Dichromacy





**Tritanopia**  
12356502

# Trichromacy



**Original Color**  
12095846

**Protanomaly**  
11310440

**Deuteranomaly**  
12030566

**Tritanomaly**  
12291461

# Monochromacy



**Original Color**  
12095846

**Achromatopsia**  
10000536

**Achromatomaly**  
10786182

# CSS Examples

## Text

The CSS property to change the color of the text to Decimal 12095846 is called "color". The color property can be set on classes, ids or directly on the HTML element.

This example shows how text in the color #B89166 looks like.

```
.text, #text, p{  
    color:#B89166  
}
```

If you want to add a text shadow in that color use the text-shadow property, you can generate a text shadow directly with our [CSS Text Shadow Generator](#).

Here you see how black text with a 4 pixel #B89166 colored shadow looks like.

```
.shadow{ text-shadow: 4px 4px 2px #B89166
}
```

## Border

The CSS property to change the border of an element to Decimal 12095846 is called "border". The border property can be set on classes, ids or directly on the HTML element.

This example shows the color as border, it can be applied via the CSS property "border" or "border-color".

```
.border, #border, table{ border:4px solid
#B89166 }
```

If only the border color should be changed use the property `border-color`.

```
.border{ border-color:#B89166 }
```

If you want to add a box shadow in that color use:

Here you see how a box with a 4 pixel #B89166 colored shadow looks like.

```
.boxshadow{ -moz-box-shadow:4px 4px 4px  
4px #B89166; -webkit-box-shadow:4px 4px  
4px 4px #B89166; box-shadow:4px 4px 4px  
4px #B89166 }
```

# Background

The CSS property to change the background color of an element to Decimal 12095846 is called "background". The background property can be set on classes, ids or directly on the HTML element.

```
.background, #background, body{  
background:#B89166 }
```

If only the background color should be changed can be used:

```
.background{ background-color:#B89166 }
```

This example shows the color as background, it is applied via the CSS property "background".

To optimize and compress your CSS code, you can use our [online CSS compressor and optimizer](#) based on csstidy. If you want to create a linear or radial gradient as background or border, check our [CSS Gradient Generator](#).



Hey! You found this booklet interesting? Support Converting Colors with the new Membership Option!

The pro membership hides all ads, plus gives you double the colors in the color bucket, and more awesome pro features!

**[Learn more, Memberships starting at \\$2.50/m!](#)**

**Follow me  
on Twitter!**

@ConvertingColor