

Converting Colors

Decimal(12096102)

Have a look what the booklet for
Decimal(12096102) contains.

Decimal(12096102)	3
<i>Conversions</i>	4
<i>Details</i>	6
<i>Harmonies</i>	11
<i>Previews</i>	23
<i>Color Blindness Simulation</i>	26
<i>CSS Examples</i>	29

Color

Decimal(12096102)

Conversions

Conversions Part 1

Format	Color
Hex	B89266
RGB	184, 146, 102
RGB Percent	72%, 57%, 40%
CMY	0.2784, 0.4275, 0.6000
CMYK	0.00, 0.21, 0.45, 0.28
HSL	32°, 37%, 56%
HSV	32°, 45%, 72%
XYZ	32.4443, 31.7074, 16.9805
YIQ	152.3460, 36.7720, -5.6280

Conversions

Conversions Part 2

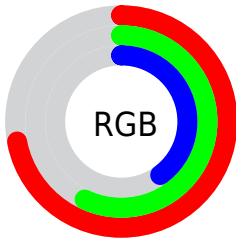
Format	Color
RYB	173, 184, 102
Decimal	12096102
CIELab	63.10, 8.49, 28.73
CIElCh	63, 29.955, 73.538
Yxy	31.7074, 0.3999, 0.3908
Android (android.graphics.Color)	4290286182 (0xFFB89266)
YUV	152.3460, -24.8206, 27.7606
Hunter-Lab	56.3093, 4.3068, 21.5372

Details

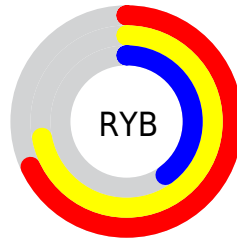
The Decimal color **12096102** is a dark color, and the websafe version is hex **CC9966**. A complement of this color would be **6720696**, and the grayscale version is **10066329**.

A 20% lighter version of the original color is **15911066**, and **8478774** is the 20% darker color. If you saturate the color by 10%, you get **12093780**, and if you desaturate by 10%, it is **12098424**.

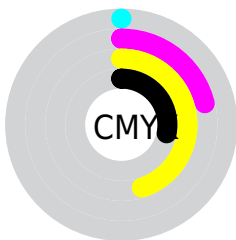
Distribution



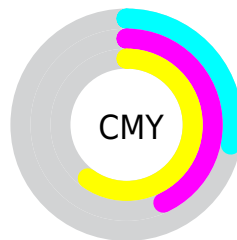
- Red (72%)
- Green (57%)
- Blue (40%)



- Red (68%)
- Yellow (72%)
- Blue (40%)



- Cyan (0%)
- Magenta (21%)
- Yellow (45%)
- Black (28%)



- Cyan (28%)
- Magenta (43%)
- Yellow (60%)

Brightness & Saturation Gradients

These gradients show how the Decimal color 12096102 changes by changing the brightness by 10 percent. The first figure shows a shift by +10% for each color and the second figure -10%.

Similar to the brightness gradients but the following saturation gradients show a change of the Decimal color 12096102 by changing the saturation by 10% instead.

 12096102

 12096102

16777215

 10254414

 15911066

 8478774

 16770228

 6768672

 16777168

 5058825

 16777197

 3415040

 1901568

 0

 12096102

 12096102

 12093780

 12098424

 12091713

 12100491

 12089391

 12102813

 12087324

 12104880

 12085002

 12107202

 12083968

 12109268

 12111591

 12113657

 12115967

Harmonies

Analogous

The Analogous color harmony consists of three colors that are next to each other on the color wheel.



13207925



12096102



10460004

Triad

The Triadic color harmony groups three colors that are evenly spaced from another and form a triangle on the color wheel.



12096102



4564900



11243199

Complementary

The Complementary color scheme is a pair of colors which are on the opposite of each other on the color wheel.



12096102



6720696

Split Complementary

Split-complementary colors differ from the complementary color scheme. The scheme consists of three colors, the original color and two neighbors of the complement color.



8886220



12096102



4236733

Square

The Square scheme is like the rectangle color scheme, but the four colors are evenly spaced on the color wheel.



12096102



6399625



6201547



12879528

Rectangle

The Rectangle color scheme consists of four colors that form a rectangle on the color wheel.



12096102



9150572



6201547



10523077

Sweetspot

The Sweet Spot groups the original color and five complimentary colors.



12096102



15786449



12084876



7892837



16250871



7895160

Same Dimension

The Same Dimension uses a secret algorithm to generate beautiful new colors.



12096102



15775089



11909222



6051923



10244864



1838848

Inverse Universe

The Inverse Universe completely reimagines the original color for something new.



6720696



7449840



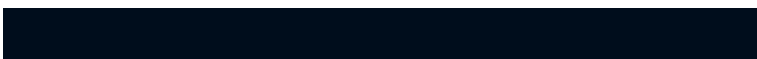
6907576



5461852



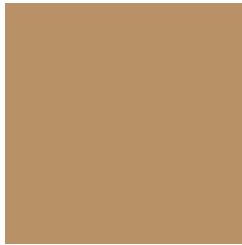
18588



3356

Previews

White Background



This preview shows how the Decimal color 12096102 looks on a white background.

Color Contrast Check

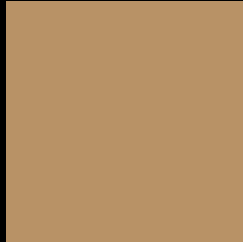
Large Text (above 18pt) WCAG AA × Fail

Any Text WCAG AA × Fail

Large Text (above 18pt) WCAG AAA × Fail

Any Text WCAG AAA × Fail

Black Background



This preview shows how the Decimal color 12096102 looks on a black background.

Color Contrast Check

Large Text (above 18pt) WCAG AA ✓ Pass

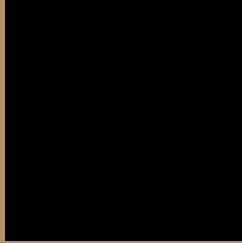
Any Text WCAG AA ✓ Pass

Large Text (above 18pt) WCAG AAA ✓ Pass

Any Text WCAG AAA ✓ Pass

If you want to check with other color combinations, try the [Color Contrast Checker](#).

Decimal 12096102 Background



This preview shows how black text looks on a background with the Decimal color 12096102.



This preview shows how white text looks on a background with the Decimal color 12096102.

Color Blindness Simulation

Color vision deficiency is a very complex topic, and I could not describe the different causes any better than Wikipedia does, so if you want to learn more, you should check out their [article about color blindness](#).

Dichromacy



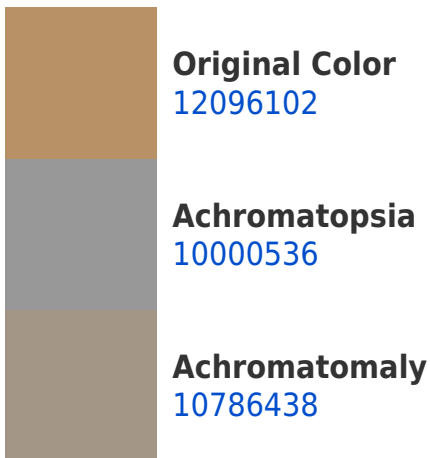


Tritanopia
12422295

Trichromacy



Monochromacy



CSS Examples

Text

The CSS property to change the color of the text to Decimal 12096102 is called "color". The color property can be set on classes, ids or directly on the HTML element.

This example shows how text in the color #B89266 looks like.

```
.text, #text, p{  
    color:#B89266  
}
```

If you want to add a text shadow in that color use the text-shadow property, you can generate a text shadow directly with our [CSS Text Shadow Generator](#).

Here you see how black text with a 4 pixel #B89266 colored shadow looks like.

```
.shadow{ text-shadow: 4px 4px 2px #B89266
}
```

Border

The CSS property to change the border of an element to Decimal 12096102 is called "border". The border property can be set on classes, ids or directly on the HTML element.

This example shows the color as border, it can be applied via the CSS property "border" or "border-color".

```
.border, #border, table{ border:4px solid
#B89266 }
```

If only the border color should be changed use the property `border-color`.

```
.border{ border-color:#B89266 }
```

If you want to add a box shadow in that color use:

Here you see how a box with a 4 pixel #B89266 colored shadow looks like.

```
.boxshadow{ -moz-box-shadow:4px 4px 4px  
4px #B89266; -webkit-box-shadow:4px 4px  
4px 4px #B89266; box-shadow:4px 4px 4px  
4px #B89266 }
```

Background

The CSS property to change the background color of an element to Decimal 12096102 is called "background". The background property can be set on classes, ids or directly on the HTML element.

```
.background, #background, body{  
background:#B89266 }
```

If only the background color should be changed can be used:

```
.background{ background-color:#B89266 }
```

This example shows the color as background, it is applied via the CSS property "background".

To optimize and compress your CSS code, you can use our [online CSS compressor and optimizer](#) based on csstidy. If you want to create a linear or radial gradient as background or border, check our [CSS Gradient Generator](#).

Hey! You found this booklet interesting? Support Converting Colors with the new Membership Option!

The pro membership hides all ads, plus gives you double the colors in the color bucket, and more awesome pro features!

[Learn more, Memberships starting at \\$2.50/m!](#)

**Follow me
on Twitter!**

@ConvertingColor