

# Converting Colors

Decimal(12096148)

Have a look what the booklet for  
Decimal(12096148) contains.

<b>Decimal(12096148)</b> .....	3
<i><b>Conversions</b></i> .....	4
<i><b>Details</b></i> .....	6
<i><b>Harmonies</b></i> .....	11
<i><b>Previews</b></i> .....	23
<i><b>Color Blindness Simulation</b></i> .....	26
<i><b>CSS Examples</b></i> .....	29

# **Color**

**Decimal(12096148)**

# Conversions

## Conversions Part 1

Format	Color
Hex	B89294
RGB	184, 146, 148
RGB Percent	72%, 57%, 58%
CMY	0.2784, 0.4275, 0.4196
CMYK	0.00, 0.21, 0.20, 0.28
HSL	357°, 21%, 65%
HSV	357°, 21%, 72%
XYZ	35.3913, 32.8862, 32.4993
YIQ	157.5900, 22.0060, 8.6780

# Conversions

## Conversions Part 2

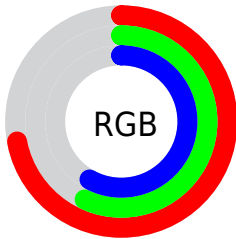
<b>Format</b>	<b>Color</b>
<a href="#">RYB</a>	<a href="#">184, 146, 148</a>
Decimal	<a href="#">12096148</a>
CIELab	<a href="#">64.07, 14.59, 4.39</a>
CIELCh	<a href="#">64, 15.235, 16.745</a>
Yxy	<a href="#">32.8862, 0.3512, 0.3263</a>
Android (android.graphics.Color)	<a href="#">4290286228</a> ( <a href="#">0xFFB89294</a> )
YUV	<a href="#">157.5900, -4.7279, 23.1616</a>
Hunter-Lab	<a href="#">57.3465, 9.8047, 6.5418</a>

# Details

The Decimal color **12096148** is a light color, and the websafe version is hex **CC9999**. A complement of this color would be **9615542**, and the grayscale version is **10395294**.

A 20% lighter version of the original color is **15780042**, and **8544097** is the 20% darker color. If you saturate the color by 10%, you get **12091523**, and if you desaturate by 10%, it is **12100773**.

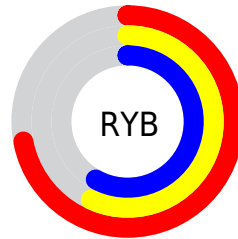
# Distribution



Red (72%)

Green (57%)

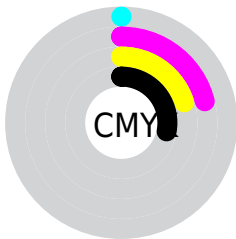
Blue (58%)



Red (72%)

Yellow (57%)

Blue (58%)

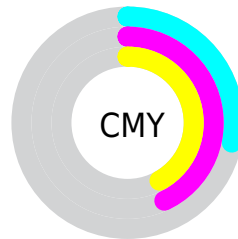


Cyan (0%)

Magenta (21%)

Yellow (20%)

Black (28%)



Cyan (28%)

Magenta (43%)

Yellow (42%)

# Brightness & Saturation Gradients

These gradients show how the Decimal color 12096148 changes by changing the brightness by 10 percent. The first figure shows a shift by +10% for each color and the second figure -10%.

Similar to the brightness gradients but the following saturation gradients show a change of the Decimal color 12096148 by changing the saturation by 10% instead.



 12096148

 12096148

16777215

 10319994

 15780042

 8544097

 16770278

 6899530

 5255475

 3676958

 2360069

 0


 12096148

 12096148

 12091523

 12100773

 12086641

 12105655

 12082016

 12110280

 12077134

 12115162

 12072509

 12119787

 12067883

 12124157

 12063002

 12124159

 12058634

# Harmonies

## Analogous

The Analogous color harmony consists of three colors that are next to each other on the color wheel.



11768482



12096148



11900040

# Triad

The Triadic color harmony groups three colors that are evenly spaced from another and form a triangle on the color wheel.



12096148



9347464



8756917

# Complementary

The Complementary color scheme is a pair of colors which are on the opposite of each other on the color wheel.



12096148



9615542

# Split Complementary

Split-complementary colors differ from the complementary color scheme. The scheme consists of three colors, the original color and two neighbors of the complement color.



8037039



12096148



8430485

# Square

The Square scheme is like the rectangle color scheme, but the four colors are evenly spaced on the color wheel.



12096148



10395009



7906211



9870005

# Rectangle

The Rectangle color scheme consists of four colors that form a rectangle on the color wheel.



12096148



11573123



7906211



8429748



# Sweetspot

The Sweet Spot groups the original color and five complimentary colors.



12096148



15786466



11899576



7892848



16250871



7895160



# Same Dimension

The Same Dimension uses a secret algorithm to generate beautiful new colors.



12096148



15774903



12100242



6050643



10223624



1835009



# Inverse Universe

The Inverse Universe completely reimagines the original color for something new.



12096148



15774903



9611448



6050643



10223624

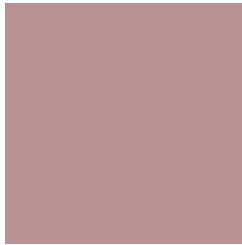


1835009



# Previews

## White Background



This preview shows how the Decimal color 12096148 looks on a white background.

## Color Contrast Check

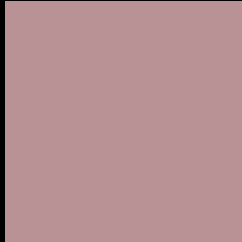
Large Text (above 18pt) WCAG AA × Fail

Any Text WCAG AA × Fail

Large Text (above 18pt) WCAG AAA × Fail

Any Text WCAG AAA × Fail

# Black Background



This preview shows how the Decimal color 12096148 looks on a black background.

## Color Contrast Check

Large Text (above 18pt) WCAG AA ✓ Pass

Any Text WCAG AA ✓ Pass

Large Text (above 18pt) WCAG AAA ✓ Pass

Any Text WCAG AAA ✓ Pass

If you want to check with other color combinations, try the [Color Contrast Checker](#).



## Decimal 12096148 Background



This preview shows how black text looks on a background with the Decimal color 12096148.



This preview shows how white text looks on a background with the Decimal color 12096148.

# Color Blindness Simulation

Color vision deficiency is a very complex topic, and I could not describe the different causes any better than Wikipedia does, so if you want to learn more, you should check out their [article about color blindness](#).

## Dichromacy



**Original Color**  
12096148

**Protanopia**  
10460057

**Deuteranopia**  
11441811



**Tritanopia**  
12161436

# Trichromacy



**Original Color**  
12096148

**Protanomaly**  
11049111

**Deuteranomaly**  
11703699

**Tritanomaly**  
12161433

# Monochromacy



**Original Color**  
12096148

**Achromatopsia**  
10395294

**Achromatomaly**  
10984090

# CSS Examples

## Text

The CSS property to change the color of the text to Decimal 12096148 is called "color". The color property can be set on classes, ids or directly on the HTML element.

This example shows how text in the color #B89294 looks like.

```
.text, #text, p{  
    color:#B89294  
}
```

If you want to add a text shadow in that color use the text-shadow property, you can generate a text shadow directly with our [CSS Text Shadow Generator](#).

Here you see how black text with a 4 pixel #B89294 colored shadow looks like.

```
.shadow{ text-shadow: 4px 4px 2px #B89294
}
```

## Border

The CSS property to change the border of an element to Decimal 12096148 is called "border". The border property can be set on classes, ids or directly on the HTML element.

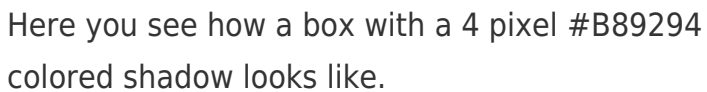
This example shows the color as border, it can be applied via the CSS property "border" or "border-color".

```
.border, #border, table{ border:4px solid
#B89294 }
```

If only the border color should be changed use the property `border-color`.

```
.border{ border-color:#B89294 }
```

If you want to add a box shadow in that color use:



Here you see how a box with a 4 pixel #B89294 colored shadow looks like.

```
.boxshadow{ -moz-box-shadow:4px 4px 4px  
4px #B89294; -webkit-box-shadow:4px 4px  
4px 4px #B89294; box-shadow:4px 4px 4px  
4px #B89294 }
```

# Background

The CSS property to change the background color of an element to Decimal 12096148 is called "background". The background property can be set on classes, ids or directly on the HTML element.

```
.background, #background, body{  
background:#B89294 }
```

If only the background color should be changed can be used:

```
.background{ background-color:#B89294 }
```

This example shows the color as background, it is applied via the CSS property "background".

To optimize and compress your CSS code, you can use our [online CSS compressor and optimizer](#) based on csstidy. If you want to create a linear or radial gradient as background or border, check our [CSS Gradient Generator](#).



Hey! You found this booklet interesting? Support Converting Colors with the new Membership Option!

The pro membership hides all ads, plus gives you double the colors in the color bucket, and more awesome pro features!

**[Learn more, Memberships starting at \\$2.50/m!](#)**

**Follow me  
on Twitter!**

@ConvertingColor