

Converting Colors

Decimal(12097422)

Have a look what the booklet for
Decimal(12097422) contains.

Decimal(12097422)	3
<i>Conversions</i>	4
<i>Details</i>	6
<i>Harmonies</i>	11
<i>Previews</i>	23
<i>Color Blindness Simulation</i>	26
<i>CSS Examples</i>	29

Color

Decimal(12097422)

Conversions

Conversions Part 1

Format	Color
Hex	B8978E
RGB	184, 151, 142
RGB Percent	72%, 59%, 56%
CMY	0.2784, 0.4078, 0.4431
CMYK	0.00, 0.18, 0.23, 0.28
HSL	13°, 23%, 64%
HSV	13°, 23%, 72%
XYZ	35.7163, 34.2766, 30.3248
YIQ	159.8410, 22.5570, 4.1970

Conversions

Conversions Part 2

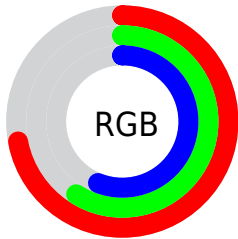
Format	Color
RYB	184, 153, 142
Decimal	12097422
CIELab	65.18, 10.89, 9.36
CIELCh	65, 14.359, 40.673
Yxy	34.2766, 0.3560, 0.3417
Android (android.graphics.Color)	4290287502 (0xFFB8978E)
YUV	159.8410, -8.7956, 21.1874
Hunter-Lab	58.5462, 6.4386, 10.2723

Details

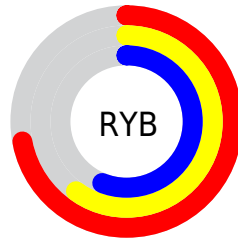
The Decimal color **12097422** is a light color, and the websafe version is hex **CC9999**. A complement of this color would be **9351096**, and the grayscale version is **10526880**.

A 20% lighter version of the original color is **15846852**, and **8545372** is the 20% darker color. If you saturate the color by 10%, you get **12093820**, and if you desaturate by 10%, it is **12101024**.

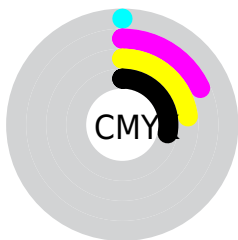
Distribution



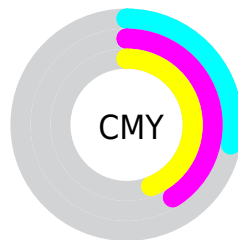
- Red (72%)
- Green (59%)
- Blue (56%)



- Red (72%)
- Yellow (60%)
- Blue (56%)



- Cyan (0%)
- Magenta (18%)
- Yellow (23%)
- Black (28%)



- Cyan (28%)
- Magenta (41%)
- Yellow (44%)

Brightness & Saturation Gradients

These gradients show how the Decimal color 12097422 changes by changing the brightness by 10 percent. The first figure shows a shift by +10% for each color and the second figure -10%.

Similar to the brightness gradients but the following saturation gradients show a change of the Decimal color 12097422 by changing the saturation by 10% instead.



12097422



12097422

16777215



10321268



15846852



8545372



16771552



6900804

16777212



5256494



3678233



2361856



0



12097422



12097422




12093820



12101024

 12089961

 12104883

 12086359

 12108485


 12082500

 12112344

 12078898

 12115946


 12075040

 12119804

 12071437

 12123391

 12068608

 12124159

Harmonies

Analogous

The Analogous color harmony consists of three colors that are next to each other on the color wheel.



12162458



12097422



11574150

Triad

The Triadic color harmony groups three colors that are evenly spaced from another and form a triangle on the color wheel.



12097422



8889749



9871031

Complementary

The Complementary color scheme is a pair of colors which are on the opposite of each other on the color wheel.



12097422



9351096

Split Complementary

Split-complementary colors differ from the complementary color scheme. The scheme consists of three colors, the original color and two neighbors of the complement color.



8889014



12097422



8300194

Square

The Square scheme is like the rectangle color scheme, but the four colors are evenly spaced on the color wheel.



12097422



9806731



8299950



10918322

Rectangle

The Rectangle color scheme consists of four colors that form a rectangle on the color wheel.



12097422



11050373



8299950



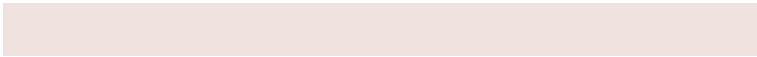
9478072

Sweetspot

The Sweet Spot groups the original color and five complimentary colors.



12097422



15786975



12095152



7893102



16250871



7895160

Same Dimension

The Same Dimension uses a secret algorithm to generate beautiful new colors.



12097422



15777199



12102542



6051155



10232064



1836544

Inverse Universe

The Inverse Universe completely reimagines the original color for something new.



9351096



11526896



9345976



5462620



31388



5660

Previews

White Background



This preview shows how the Decimal color 12097422 looks on a white background.

Color Contrast Check

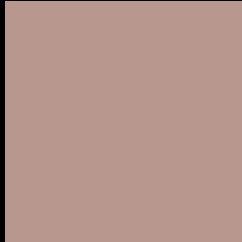
Large Text (above 18pt) WCAG AA × Fail

Any Text WCAG AA × Fail

Large Text (above 18pt) WCAG AAA × Fail

Any Text WCAG AAA × Fail

Black Background



This preview shows how the Decimal color 12097422 looks on a black background.

Color Contrast Check

Large Text (above 18pt) WCAG AA ✓ Pass

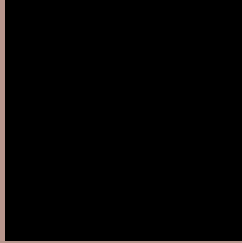
Any Text WCAG AA ✓ Pass

Large Text (above 18pt) WCAG AAA ✓ Pass

Any Text WCAG AAA ✓ Pass

If you want to check with other color combinations, try the [Color Contrast Checker](#).

Decimal 12097422 Background



This preview shows how black text looks on a background with the Decimal color 12097422.



This preview shows how white text looks on a background with the Decimal color 12097422.

Color Blindness Simulation

Color vision deficiency is a very complex topic, and I could not describe the different causes any better than Wikipedia does, so if you want to learn more, you should check out their [article about color blindness](#).

Dichromacy





Tritanopia
12227744

Trichromacy



Original Color
12097422

Protanomaly
11246481

Deuteranomaly
11901070

Tritanomaly
12162457

Monochromacy



Original Color
12097422

Achromatopsia
10526880

Achromatomaly
11115929

CSS Examples

Text

The CSS property to change the color of the text to Decimal 12097422 is called "color". The color property can be set on classes, ids or directly on the HTML element.

This example shows how text in the color #B8978E looks like.

```
.text, #text, p{  
  color:#B8978E  
}
```

If you want to add a text shadow in that color use the text-shadow property, you can generate a text shadow directly with our [CSS Text Shadow Generator](#).

Here you see how black text with a 4 pixel #B8978E colored shadow looks like.

```
.shadow{ text-shadow: 4px 4px 2px #B8978E
}
```

Border

The CSS property to change the border of an element to Decimal 12097422 is called "border". The border property can be set on classes, ids or directly on the HTML element.

This example shows the color as border, it can be applied via the CSS property "border" or "border-color".

```
.border, #border, table{ border:4px solid
#B8978E }
```

If only the border color should be changed use the property `border-color`.

```
.border{ border-color:#B8978E }
```

If you want to add a box shadow in that color use:

Here you see how a box with a 4 pixel #B8978E colored shadow looks like.

```
.boxshadow{ -moz-box-shadow:4px 4px 4px  
4px #B8978E; -webkit-box-shadow:4px 4px  
4px 4px #B8978E; box-shadow:4px 4px 4px  
4px #B8978E }
```

Background

The CSS property to change the background color of an element to Decimal 12097422 is called "background". The background property can be set on classes, ids or directly on the HTML element.

```
.background, #background, body{  
background:#B8978E }
```

If only the background color should be changed can be used:

```
.background{ background-color:#B8978E }
```

This example shows the color as background, it is applied via the CSS property "background".

To optimize and compress your CSS code, you can use our [online CSS compressor and optimizer](#) based on csstidy. If you want to create a linear or radial gradient as background or border, check our [CSS Gradient Generator](#).

Hey! You found this booklet interesting? Support Converting Colors with the new Membership Option!

The pro membership hides all ads, plus gives you double the colors in the color bucket, and more awesome pro features!

[Learn more, Memberships starting at \\$2.50/m!](#)

**Follow me
on Twitter!**

@ConvertingColor