

Converting Colors

Decimal(12097675)

Have a look what the booklet for
Decimal(12097675) contains.

Decimal(12097675)	3
<i>Conversions</i>	4
<i>Details</i>	6
<i>Harmonies</i>	11
<i>Previews</i>	23
<i>Color Blindness Simulation</i>	26
<i>CSS Examples</i>	29

Color

Decimal(12097675)

Conversions

Conversions Part 1

Format	Color
Hex	B8988B
RGB	184, 152, 139
RGB Percent	72%, 60%, 55%
CMY	0.2784, 0.4039, 0.4549
CMYK	0.00, 0.17, 0.24, 0.28
HSL	17°, 24%, 63%
HSV	17°, 24%, 72%
XYZ	35.6556, 34.5109, 29.2081
YIQ	160.0860, 23.2450, 2.7410

Conversions

Conversions Part 2

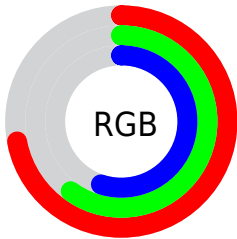
Format	Color
RYB	184, 157, 139
Decimal	12097675
CIELab	65.37, 9.89, 11.30
CIElCh	65, 15.017, 48.806
Yxy	34.5109, 0.3588, 0.3473
Android (android.graphics.Color)	4290287755 (0xFFB8988B)
YUV	160.0860, -10.3954, 20.9726
Hunter-Lab	58.7460, 5.5343, 11.6436

Details

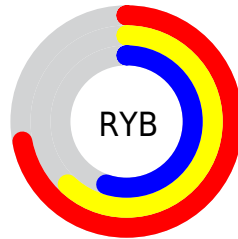
The Decimal color **12097675** is a light color, and the websafe version is hex **CC9999**. A complement of this color would be **9153464**, and the grayscale version is **10526880**.

A 20% lighter version of the original color is **15847104**, and **8545625** is the 20% darker color. If you saturate the color by 10%, you get **12094329**, and if you desaturate by 10%, it is **12101021**.

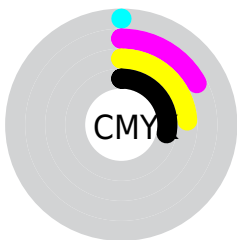
Distribution



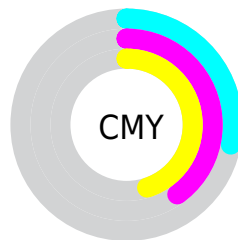
- Red (72%)
- Green (60%)
- Blue (55%)



- Red (72%)
- Yellow (62%)
- Blue (55%)



- Cyan (0%)
- Magenta (17%)
- Yellow (24%)
- Black (28%)



- Cyan (28%)
- Magenta (40%)
- Yellow (45%)

Brightness & Saturation Gradients

These gradients show how the Decimal color 12097675 changes by changing the brightness by 10 percent. The first figure shows a shift by +10% for each color and the second figure -10%.

Similar to the brightness gradients but the following saturation gradients show a change of the Decimal color 12097675 by changing the saturation by 10% instead.

 12097675

 12097675

16777215

 10321522

 15847104

 8545625

 16772060

 6901058

 16777209

 5256748

 3678487

 2296576

 0


 12097675

 12097675

 12094329

 12101021


 12090982

 12104368


 12087636

 12107714

 12084289

 12111061

 12080943

 12114407

 12077341

 12118009

 12073994

 12121343

 12072192

 12124159

Harmonies

Analogous

The Analogous color harmony consists of three colors that are next to each other on the color wheel.



12293783



12097675



11443333

Triad

The Triadic color harmony groups three colors that are evenly spaced from another and form a triangle on the color wheel.



12097675



8627865



10198456

Complementary

The Complementary color scheme is a pair of colors which are on the opposite of each other on the color wheel.



12097675



9153464

Split Complementary

Split-complementary colors differ from the complementary color scheme. The scheme consists of three colors, the original color and two neighbors of the complement color.



9085369



12097675



8169383

Square

The Square scheme is like the rectangle color scheme, but the four colors are evenly spaced on the color wheel.



12097675



9544845



8299954



11246001

Rectangle

The Rectangle color scheme consists of four colors that form a rectangle on the color wheel.



12097675



10854276



8299954



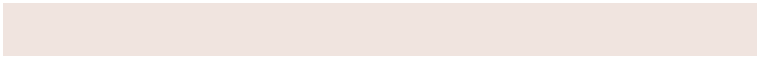
9805753

Sweetspot

The Sweet Spot groups the original color and five complimentary colors.



12097675



15787231



12094379



7893358



16250871



7895160

Same Dimension

The Same Dimension uses a secret algorithm to generate beautiful new colors.



12097675



15777450



12103307



6051155



10235136



1837056

Inverse Universe

The Inverse Universe completely reimagines the original color for something new.



9153464



11197680



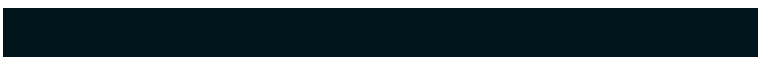
9147832



5462364



28572



5148

Previews

White Background



This preview shows how the Decimal color 12097675 looks on a white background.

Color Contrast Check

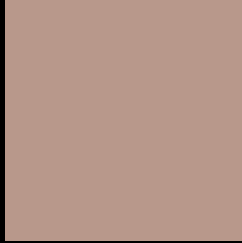
Large Text (above 18pt) WCAG AA × Fail

Any Text WCAG AA × Fail

Large Text (above 18pt) WCAG AAA × Fail

Any Text WCAG AAA × Fail

Black Background



This preview shows how the Decimal color 12097675 looks on a black background.

Color Contrast Check

Large Text (above 18pt) WCAG AA ✓ Pass

Any Text WCAG AA ✓ Pass

Large Text (above 18pt) WCAG AAA ✓ Pass

Any Text WCAG AAA ✓ Pass

If you want to check with other color combinations, try the [Color Contrast Checker](#).

Decimal 12097675 Background



This preview shows how black text looks on a background with the Decimal color 12097675.



This preview shows how white text looks on a background with the Decimal color 12097675.

Color Blindness Simulation

Color vision deficiency is a very complex topic, and I could not describe the different causes any better than Wikipedia does, so if you want to learn more, you should check out their [article about color blindness](#).

Dichromacy



Original Color
12097675

Protanopia
10919566

Deuteranopia
11901323



Tritanopia
12228000

Trichromacy



Original Color
12097675

Protanomaly
11377805

Deuteranomaly
11966859

Tritanomaly
12162712

Monochromacy



Original Color
12097675

Achromatopsia
10526880

Achromatomaly
11115928

CSS Examples

Text

The CSS property to change the color of the text to Decimal 12097675 is called "color". The color property can be set on classes, ids or directly on the HTML element.

This example shows how text in the color #B8988B looks like.

```
.text, #text, p{  
    color:#B8988B  
}
```

If you want to add a text shadow in that color use the text-shadow property, you can generate a text shadow directly with our [CSS Text Shadow Generator](#).

Here you see how black text with a 4 pixel #B8988B colored shadow looks like.

```
.shadow{ text-shadow: 4px 4px 2px #B8988B
}
```

Border

The CSS property to change the border of an element to Decimal 12097675 is called "border". The border property can be set on classes, ids or directly on the HTML element.

This example shows the color as border, it can be applied via the CSS property "border" or "border-color".

```
.border, #border, table{ border:4px solid
#B8988B }
```

If only the border color should be changed use the property `border-color`.

```
.border{ border-color:#B8988B }
```

If you want to add a box shadow in that color use:

Here you see how a box with a 4 pixel #B8988B colored shadow looks like.

```
.boxshadow{ -moz-box-shadow:4px 4px 4px  
4px #B8988B; -webkit-box-shadow:4px 4px  
4px 4px #B8988B; box-shadow:4px 4px 4px  
4px #B8988B }
```

Background

The CSS property to change the background color of an element to Decimal 12097675 is called "background". The background property can be set on classes, ids or directly on the HTML element.

```
.background, #background, body{  
background:#B8988B }
```

If only the background color should be changed can be used:

```
.background{ background-color:#B8988B }
```

This example shows the color as background, it is applied via the CSS property "background".

To optimize and compress your CSS code, you can use our [online CSS compressor and optimizer](#) based on csstidy. If you want to create a linear or radial gradient as background or border, check our [CSS Gradient Generator](#).

Hey! You found this booklet interesting? Support Converting Colors with the new Membership Option!

The pro membership hides all ads, plus gives you double the colors in the color bucket, and more awesome pro features!

[Learn more, Memberships starting at \\$2.50/m!](#)

**Follow me
on Twitter!**

@ConvertingColor