

# Converting Colors

Decimal(12097688)

Have a look what the booklet for  
Decimal(12097688) contains.

<b>Decimal(12097688)</b> .....	3
<i><b>Conversions</b></i> .....	4
<i><b>Details</b></i> .....	6
<i><b>Harmonies</b></i> .....	11
<i><b>Previews</b></i> .....	23
<i><b>Color Blindness Simulation</b></i> .....	26
<i><b>CSS Examples</b></i> .....	29

# **Color**

**Decimal(12097688)**

# Conversions

## Conversions Part 1

<b>Format</b>	<b>Color</b>
Hex	B89898
RGB	184, 152, 152
RGB Percent	72%, 60%, 60%
CMY	0.2784, 0.4039, 0.4039
CMYK	0.00, 0.17, 0.17, 0.28
HSL	0°, 18%, 66%
HSV	0°, 17%, 72%
XYZ	36.6629, 34.9138, 34.5125
YIQ	161.5680, 19.0720, 6.7840

# Conversions

## Conversions Part 2

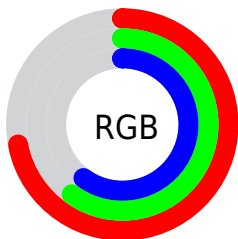
<b>Format</b>	<b>Color</b>
<b>RYB</b>	184, 152, 152
Decimal	12097688
CIELab	65.68, 11.89, 4.47
CIELCh	66, 12.706, 20.577
Yxy	34.9138, 0.3456, 0.3291
Android (android.graphics.Color)	4290287768 (0xFFB89898)
YUV	161.5680, -4.7170, 19.6729
Hunter-Lab	59.0879, 7.3519, 6.7310

# Details

The Decimal color **12097688** is a light color, and the websafe version is hex **CC9999**. A complement of this color would be **10008760**, and the grayscale version is **10658466**.

A 20% lighter version of the original color is **15781582**, and **8611173** is the 20% darker color. If you saturate the color by 10%, you get **12093062**, and if you desaturate by 10%, it is **12102314**.

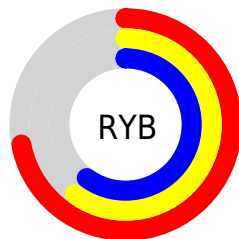
# Distribution



Red (72%)

Green (60%)

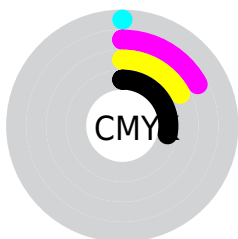
Blue (60%)



Red (72%)

Yellow (60%)

Blue (60%)

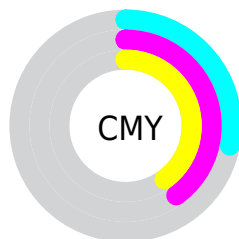


Cyan (0%)

Magenta (17%)

Yellow (17%)

Black (28%)



Cyan (28%)

Magenta (40%)

Yellow (40%)

# Brightness & Saturation Gradients

These gradients show how the Decimal color 12097688 changes by changing the brightness by 10 percent. The first figure shows a shift by +10% for each color and the second figure -10%.

Similar to the brightness gradients but the following saturation gradients show a change of the Decimal color 12097688 by changing the saturation by 10% instead.



 12097688

 12097688

16777215

 10321534

 15781582

 8611173

 16772074

 6901069

 5256759

 3744033

 2362122

 0

 12097688

 12097688


 12093062

 12102314

 12088179

 12107197

 12083553

 12111823

 12078670

 12116706

 12074044

 12121332

 12069418

 12124159

 12064535

 12059909

 12058624

# Harmonies

## Analogous

The Analogous color harmony consists of three colors that are next to each other on the color wheel.



11901092



12097688



11901582

# Triad

The Triadic color harmony groups three colors that are evenly spaced from another and form a triangle on the color wheel.



12097688



9675921



9413302

# Complementary

The Complementary color scheme is a pair of colors which are on the opposite of each other on the color wheel.



12097688



10008760

# Split Complementary

Split-complementary colors differ from the complementary color scheme. The scheme consists of three colors, the original color and two neighbors of the complement color.



8758705



12097688



8955547

# Square

The Square scheme is like the rectangle color scheme, but the four colors are evenly spaced on the color wheel.



12097688



10527114



8627879



10329781

# Rectangle

The Rectangle color scheme consists of four colors that form a rectangle on the color wheel.



12097688



11574410



8627879



9151413

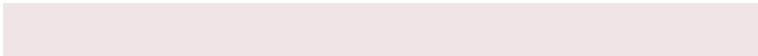


# Sweetspot

The Sweet Spot groups the original color and five complimentary colors.



12097688



15787236



12097720



7893361



16250871



7895160



# Same Dimension

The Same Dimension uses a secret algorithm to generate beautiful new colors.



12097688



15777213



12101784



6050643



10223616



1835008



# Inverse Universe

The Inverse Universe completely reimagines the original color for something new.



10008760



12447984



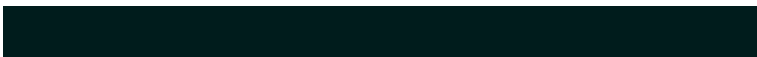
10004664



5463132



40092

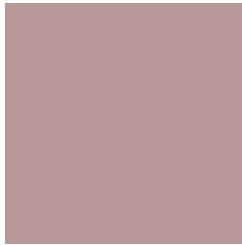


7196



# Previews

## White Background



This preview shows how the Decimal color 12097688 looks on a white background.

## Color Contrast Check

Large Text (above 18pt) WCAG AA × Fail

Any Text WCAG AA × Fail

Large Text (above 18pt) WCAG AAA × Fail

Any Text WCAG AAA × Fail

# Black Background



This preview shows how the Decimal color 12097688 looks on a black background.

## Color Contrast Check

Large Text (above 18pt) WCAG AA ✓ Pass

Any Text WCAG AA ✓ Pass

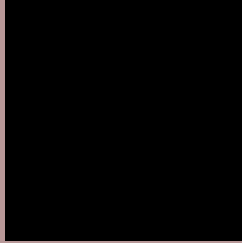
Large Text (above 18pt) WCAG AAA ✓ Pass

Any Text WCAG AAA ✓ Pass

If you want to check with other color combinations, try the [Color Contrast Checker](#).



## Decimal 12097688 Background



This preview shows how black text looks on a background with the Decimal color 12097688.



This preview shows how white text looks on a background with the Decimal color 12097688.

# Color Blindness Simulation

Color vision deficiency is a very complex topic, and I could not describe the different causes any better than Wikipedia does, so if you want to learn more, you should check out their [article about color blindness](#).


## Dichromacy



**Original Color**  
12097688

**Protanopia**  
10723228

**Deuteranopia**  
11704984



**Tritanopia**  
12162722

# Trichromacy



**Original Color**

12097688

**Protanomaly**

11246747

**Deuteranomaly**

11835800

**Tritanomaly**

12162974

# Monochromacy



**Original Color**

12097688

**Achromatopsia**

10658466

**Achromatomaly**

11181726

# CSS Examples

## Text

The CSS property to change the color of the text to Decimal 12097688 is called "color". The color property can be set on classes, ids or directly on the HTML element.

This example shows how text in the color #B89898 looks like.

```
.text, #text, p{  
  color:#B89898  
}
```

If you want to add a text shadow in that color use the text-shadow property, you can generate a text shadow directly with our [CSS Text Shadow Generator](#).

Here you see how black text with a 4 pixel #B89898 colored shadow looks like.

```
.shadow{ text-shadow: 4px 4px 2px #B89898
}
```

## Border

The CSS property to change the border of an element to Decimal 12097688 is called "border". The border property can be set on classes, ids or directly on the HTML element.

This example shows the color as border, it can be applied via the CSS property "border" or "border-color".

```
.border, #border, table{ border:4px solid
#B89898 }
```

If only the border color should be changed use the property `border-color`.

```
.border{ border-color:#B89898 }
```

If you want to add a box shadow in that color use:

Here you see how a box with a 4 pixel #B89898 colored shadow looks like.

```
.boxshadow{ -moz-box-shadow:4px 4px 4px  
4px #B89898; -webkit-box-shadow:4px 4px  
4px 4px #B89898; box-shadow:4px 4px 4px  
4px #B89898 }
```

# Background

The CSS property to change the background color of an element to Decimal 12097688 is called "background". The background property can be set on classes, ids or directly on the HTML element.

```
.background, #background, body{  
background:#B89898 }
```

If only the background color should be changed can be used:

```
.background{ background-color:#B89898 }
```

This example shows the color as background, it is applied via the CSS property "background".

To optimize and compress your CSS code, you can use our [online CSS compressor and optimizer](#) based on csstidy. If you want to create a linear or radial gradient as background or border, check our [CSS Gradient Generator](#).



Hey! You found this booklet interesting? Support Converting Colors with the new Membership Option!

The pro membership hides all ads, plus gives you double the colors in the color bucket, and more awesome pro features!

**[Learn more, Memberships starting at \\$2.50/m!](#)**

**Follow me  
on Twitter!**

@ConvertingColor