

# Converting Colors

Decimal(12097945)

Have a look what the booklet for  
Decimal(12097945) contains.

<b>Decimal(12097945)</b> .....	3
<i><b>Conversions</b></i> .....	4
<i><b>Details</b></i> .....	6
<i><b>Harmonies</b></i> .....	11
<i><b>Previews</b></i> .....	23
<i><b>Color Blindness Simulation</b></i> .....	26
<i><b>CSS Examples</b></i> .....	29

# **Color**

**Decimal(12097945)**

# Conversions

## Conversions Part 1

Format	Color
Hex	B89999
RGB	184, 153, 153
RGB Percent	72%, 60%, 60%
CMY	0.2784, 0.4000, 0.4000
CMYK	0.00, 0.17, 0.17, 0.28
HSL	0°, 18%, 66%
HSV	0°, 17%, 72%
XYZ	36.9082, 35.2727, 35.0000
YIQ	162.2690, 18.4760, 6.5720

# Conversions

## Conversions Part 2

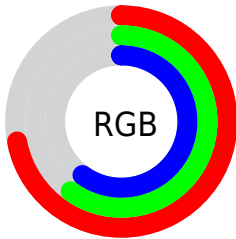
Format	Color
<a href="#">RYB</a>	<a href="#">184, 153, 153</a>
Decimal	<a href="#">12097945</a>
CIELab	<a href="#">65.96, 11.50, 4.31</a>
CIElCh	<a href="#">66, 12.283, 20.529</a>
Yxy	<a href="#">35.2727, 0.3444, 0.3291</a>
Android (android.graphics.Color)	<a href="#">4290288025 (0xFFB89999)</a>
YUV	<a href="#">162.2690, -4.5696, 19.0581</a>
Hunter-Lab	<a href="#">59.3908, 6.9940, 6.6330</a>

# Details

The Decimal color **12097945** is a light color, and the websafe version is hex **CC9999**. A complement of this color would be **10074296**, and the grayscale version is **10658466**.

A 20% lighter version of the original color is **15781839**, and **8611430** is the 20% darker color. If you saturate the color by 10%, you get **12093319**, and if you desaturate by 10%, it is **12102571**.

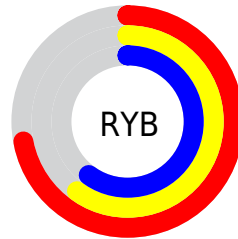
# Distribution



Red (72%)

Green (60%)

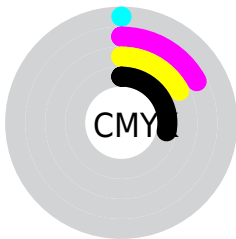
Blue (60%)



Red (72%)

Yellow (60%)

Blue (60%)

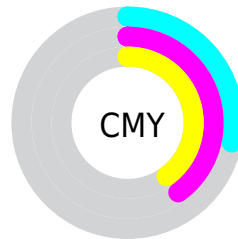


Cyan (0%)

Magenta (17%)

Yellow (17%)

Black (28%)



Cyan (28%)

Magenta (40%)

Yellow (40%)

# Brightness & Saturation Gradients

These gradients show how the Decimal color 12097945 changes by changing the brightness by 10 percent. The first figure shows a shift by +10% for each color and the second figure -10%.

Similar to the brightness gradients but the following saturation gradients show a change of the Decimal color 12097945 by changing the saturation by 10% instead.



 12097945

 12097945

16777215

 10321791

 15781839

 8611430

 16772331

 6901326

 5322551

 3744034

 2362380

 0


 12097945

 12097945

 12093319

 12102571


 12088436

 12107454

 12083810

 12112080

 12078927

 12116963

 12074301

 12121589

 12069675

 12124159

 12064792

 12060166

 12058624

# Harmonies

## Analogous

The Analogous color harmony consists of three colors that are next to each other on the color wheel.



11901348



12097945



11901840

# Triad

The Triadic color harmony groups three colors that are evenly spaced from another and form a triangle on the color wheel.



12097945



9741714



9478838

# Complementary

The Complementary color scheme is a pair of colors which are on the opposite of each other on the color wheel.



12097945



10074296

# Split Complementary

Split-complementary colors differ from the complementary color scheme. The scheme consists of three colors, the original color and two neighbors of the complement color.



8889777



12097945



9086876

# Square

The Square scheme is like the rectangle color scheme, but the four colors are evenly spaced on the color wheel.



12097945



10592908



8693672



10395573

# Rectangle

The Rectangle color scheme consists of four colors that form a rectangle on the color wheel.



12097945



11574668



8693672



9282485

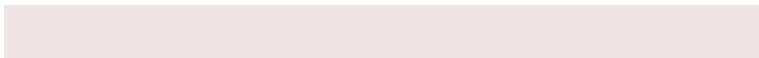


# Sweetspot

The Sweet Spot groups the original color and five complimentary colors.



12097945



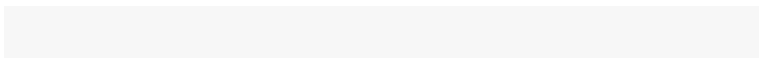
15787236



12097976



7893361



16250871



7895160



# Same Dimension

The Same Dimension uses a secret algorithm to generate beautiful new colors.



12097945



15777984



12102041



6050643



10223616



1835008



# Inverse Universe

The Inverse Universe completely reimagines the original color for something new.



10074296



12644592



10070456



5463132



40092

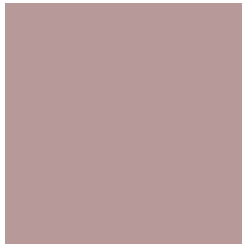


7196



# Previews

## White Background



This preview shows how the Decimal color 12097945 looks on a white background.

## Color Contrast Check

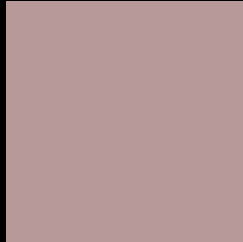
Large Text (above 18pt) WCAG AA × Fail

Any Text WCAG AA × Fail

Large Text (above 18pt) WCAG AAA × Fail

Any Text WCAG AAA × Fail

# Black Background



This preview shows how the Decimal color 12097945 looks on a black background.

## Color Contrast Check

Large Text (above 18pt) WCAG AA ✓ Pass

Any Text WCAG AA ✓ Pass

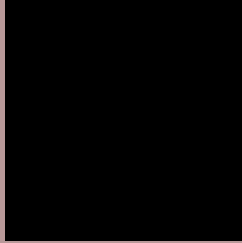
Large Text (above 18pt) WCAG AAA ✓ Pass

Any Text WCAG AAA ✓ Pass

If you want to check with other color combinations, try the [Color Contrast Checker](#).



## Decimal 12097945 Background



This preview shows how black text looks on a background with the Decimal color 12097945.



This preview shows how white text looks on a background with the Decimal color 12097945.

# Color Blindness Simulation

Color vision deficiency is a very complex topic, and I could not describe the different causes any better than Wikipedia does, so if you want to learn more, you should check out their [article about color blindness](#).

## Dichromacy



**Original Color**  
12097945

**Protanopia**  
10789021

**Deuteranopia**  
11770777



**Tritanopia**  
12162979

# Trichromacy



**Original Color**  
12097945

**Protanomaly**  
11247004

**Deuteranomaly**  
11901593

**Tritanomaly**  
12163231

# Monochromacy



**Original Color**  
12097945

**Achromatopsia**  
10658466

**Achromatomaly**  
11181983

# CSS Examples

## Text

The CSS property to change the color of the text to Decimal 12097945 is called "color". The color property can be set on classes, ids or directly on the HTML element.

This example shows how text in the color #B89999 looks like.

```
.text, #text, p{  
    color:#B89999  
}
```

If you want to add a text shadow in that color use the text-shadow property, you can generate a text shadow directly with our [CSS Text Shadow Generator](#).

Here you see how black text with a 4 pixel #B89999 colored shadow looks like.

```
.shadow{ text-shadow: 4px 4px 2px #B89999
}
```

## Border

The CSS property to change the border of an element to Decimal 12097945 is called "border". The border property can be set on classes, ids or directly on the HTML element.

This example shows the color as border, it can be applied via the CSS property "border" or "border-color".

```
.border, #border, table{ border:4px solid
#B89999 }
```

If only the border color should be changed use the property `border-color`.

```
.border{ border-color:#B89999 }
```

If you want to add a box shadow in that color use:

Here you see how a box with a 4 pixel #B89999 colored shadow looks like.

```
.boxshadow{ -moz-box-shadow:4px 4px 4px  
4px #B89999; -webkit-box-shadow:4px 4px  
4px 4px #B89999; box-shadow:4px 4px 4px  
4px #B89999 }
```

# Background

The CSS property to change the background color of an element to Decimal 12097945 is called "background". The background property can be set on classes, ids or directly on the HTML element.

```
.background, #background, body{  
background:#B89999 }
```

If only the background color should be changed can be used:

```
.background{ background-color:#B89999 }
```

This example shows the color as background, it is applied via the CSS property "background".

To optimize and compress your CSS code, you can use our [online CSS compressor and optimizer](#) based on csstidy. If you want to create a linear or radial gradient as background or border, check our [CSS Gradient Generator](#).



Hey! You found this booklet interesting? Support Converting Colors with the new Membership Option!

The pro membership hides all ads, plus gives you double the colors in the color bucket, and more awesome pro features!

**[Learn more, Memberships starting at \\$2.50/m!](#)**

**Follow me  
on Twitter!**

@ConvertingColor