

Converting Colors

Decimal(12101797)

Have a look what the booklet for
Decimal(12101797) contains.

Decimal(12101797)	3
<i>Conversions</i>	4
<i>Details</i>	6
<i>Harmonies</i>	11
<i>Previews</i>	23
<i>Color Blindness Simulation</i>	26
<i>CSS Examples</i>	29

Color

Decimal(12101797)

Conversions

Conversions Part 1

Format	Color
Hex	B8A8A5
RGB	184, 168, 165
RGB Percent	72%, 66%, 65%
CMY	0.2784, 0.3412, 0.3529
CMYK	0.00, 0.09, 0.10, 0.28
HSL	9°, 12%, 68%
HSV	9°, 10%, 72%
XYZ	40.5613, 40.9122, 41.3563
YIQ	172.4420, 10.4990, 2.4590

Conversions

Conversions Part 2

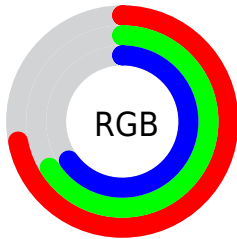
Format	Color
RYB	184, 169, 165
Decimal	12101797
CIELab	70.11, 5.26, 3.63
CIELCh	70, 6.389, 34.646
Yxy	40.9122, 0.3302, 0.3331
Android (android.graphics.Color)	4290291877 (0xFFB8A8A5)
YUV	172.4420, -3.6689, 10.1364
Hunter-Lab	63.9627, 1.2595, 6.4387

Details

The Decimal color **12101797** is a light color, and the websafe version is hex **999999**. A complement of this color would be **10859960**, and the grayscale version is **11316396**.

A 20% lighter version of the original color is **15785948**, and **8615025** is the 20% darker color. If you saturate the color by 10%, you get **12097939**, and if you desaturate by 10%, it is **12105655**.

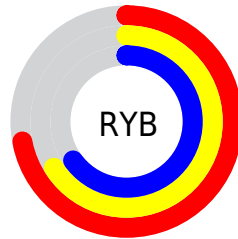
Distribution



Red (72%)

Green (66%)

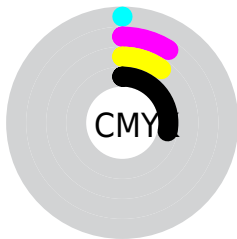
Blue (65%)



Red (72%)

Yellow (66%)

Blue (65%)

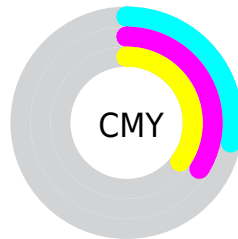


Cyan (0%)

Magenta (9%)

Yellow (10%)

Black (28%)



Cyan (28%)

Magenta (34%)

Yellow (35%)

Brightness & Saturation Gradients

These gradients show how the Decimal color 12101797 changes by changing the brightness by 10 percent. The first figure shows a shift by +10% for each color and the second figure -10%.

Similar to the brightness gradients but the following saturation gradients show a change of the Decimal color 12101797 by changing the saturation by 10% instead.

 12101797

 12101797

16777215

 10325643

 15785948

 8615025

 16776440

 6970201

 5325889

 3812907

 2365719


 917504

 0

 12101797

 12101797

 12097939

 12105655


 12093824

 12109770

 12089966

 12113628

 12085851

 12117743

 12081993

 12121599

 12077879

 12124159

 12074020

 12069906

 12066048

Harmonies

Analogous

The Analogous color harmony consists of three colors that are next to each other on the color wheel.



12101803



12101797



11905441

Triad

The Triadic color harmony groups three colors that are evenly spaced from another and form a triangle on the color wheel.



12101797



10661542



10988727

Complementary

The Complementary color scheme is a pair of colors which are on the opposite of each other on the color wheel.



12101797



10859960

Split Complementary

Split-complementary colors differ from the complementary color scheme. The scheme consists of three colors, the original color and two neighbors of the complement color.



10595766



12101797



10399660

Square

The Square scheme is like the rectangle color scheme, but the four colors are evenly spaced on the color wheel.



12101797



11120034



10399666



11446965

Rectangle

The Rectangle color scheme consists of four colors that form a rectangle on the color wheel.



12101797



11709344



10399666



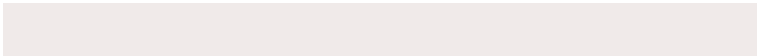
10792119

Sweetspot

The Sweet Spot groups the original color and five complimentary colors.



12101797



15788777



12101045



7894131



16250871



7895160

Same Dimension

The Same Dimension uses a secret algorithm to generate beautiful new colors.



12101797



15783891



12104101



6050899



10230016



1836032

Inverse Universe

The Inverse Universe completely reimagines the original color for something new.



10859960



13888496



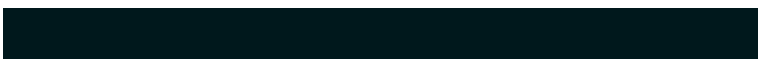
10857656



5462620



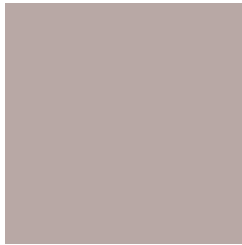
33692



6172

Previews

White Background



This preview shows how the Decimal color 12101797 looks on a white background.

Color Contrast Check

Large Text (above 18pt) WCAG AA × Fail

Any Text WCAG AA × Fail

Large Text (above 18pt) WCAG AAA × Fail

Any Text WCAG AAA × Fail

Black Background



This preview shows how the Decimal color 12101797 looks on a black background.

Color Contrast Check

Large Text (above 18pt) WCAG AA ✓ Pass

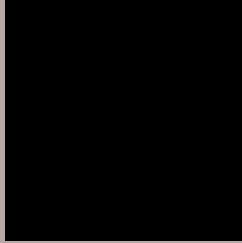
Any Text WCAG AA ✓ Pass

Large Text (above 18pt) WCAG AAA ✓ Pass

Any Text WCAG AAA ✓ Pass

If you want to check with other color combinations, try the [Color Contrast Checker](#).

Decimal 12101797 Background



This preview shows how black text looks on a background with the Decimal color 12101797.



This preview shows how white text looks on a background with the Decimal color 12101797.

Color Blindness Simulation

Color vision deficiency is a very complex topic, and I could not describe the different causes any better than Wikipedia does, so if you want to learn more, you should check out their [article about color blindness](#).

Dichromacy



Original Color
12101797

Protanopia
11578278

Deuteranopia
12494501



Tritanopia
12232371

Trichromacy



Original Color
12101797

Protanomaly
11774630

Deuteranomaly
12363685

Tritanomaly
12167086

Monochromacy



Original Color
12101797

Achromatopsia
11316396

Achromatomaly
11578281

CSS Examples

Text

The CSS property to change the color of the text to Decimal 12101797 is called "color". The color property can be set on classes, ids or directly on the HTML element.

This example shows how text in the color #B8A8A5 looks like.

```
.text, #text, p{  
    color:#B8A8A5  
}
```

If you want to add a text shadow in that color use the text-shadow property, you can generate a text shadow directly with our [CSS Text Shadow Generator](#).

Here you see how black text with a 4 pixel #B8A8A5 colored shadow looks like.

```
.shadow{ text-shadow: 4px 4px 2px #B8A8A5
}
```

Border

The CSS property to change the border of an element to Decimal 12101797 is called "border". The border property can be set on classes, ids or directly on the HTML element.

This example shows the color as border, it can be applied via the CSS property "border" or "border-color".

```
.border, #border, table{ border:4px solid
#B8A8A5 }
```

If only the border color should be changed use the property `border-color`.

```
.border{ border-color:#B8A8A5 }
```

If you want to add a box shadow in that color use:

Here you see how a box with a 4 pixel #B8A8A5 colored shadow looks like.

```
.boxshadow{ -moz-box-shadow:4px 4px 4px  
4px #B8A8A5; -webkit-box-shadow:4px 4px  
4px 4px #B8A8A5; box-shadow:4px 4px 4px  
4px #B8A8A5 }
```

Background

The CSS property to change the background color of an element to Decimal 12101797 is called "background". The background property can be set on classes, ids or directly on the HTML element.

```
.background, #background, body{  
background:#B8A8A5 }
```

If only the background color should be changed can be used:

```
.background{ background-color:#B8A8A5 }
```

This example shows the color as background, it is applied via the CSS property "background".

To optimize and compress your CSS code, you can use our [online CSS compressor and optimizer](#) based on csstidy. If you want to create a linear or radial gradient as background or border, check our [CSS Gradient Generator](#).

Hey! You found this booklet interesting? Support Converting Colors with the new Membership Option!

The pro membership hides all ads, plus gives you double the colors in the color bucket, and more awesome pro features!

[Learn more, Memberships starting at \\$2.50/m!](#)

**Follow me
on Twitter!**

@ConvertingColor