

Converting Colors

Decimal(12157570)

Have a look what the booklet for
Decimal(12157570) contains.

Decimal(12157570)	3
<i>Conversions</i>	4
<i>Details</i>	6
<i>Harmonies</i>	11
<i>Previews</i>	23
<i>Color Blindness Simulation</i>	26
<i>CSS Examples</i>	29

Color

Decimal(12157570)

Conversions

Conversions Part 1

Format	Color
Hex	B98282
RGB	185, 130, 130
RGB Percent	73%, 51%, 51%
CMY	0.2745, 0.4902, 0.4902
CMYK	0.00, 0.30, 0.30, 0.27
HSL	0°, 28%, 62%
HSV	0°, 30%, 73%
XYZ	32.0195, 27.8913, 24.8150
YIQ	146.4450, 32.7800, 11.6600

Conversions

Conversions Part 2

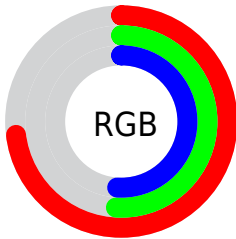
Format	Color
RYB	185, 130, 130
Decimal	12157570
CIELab	59.79, 21.22, 8.51
CIELCh	60, 22.865, 21.844
Yxy	27.8913, 0.3779, 0.3292
Android (android.graphics.Color)	4290347650 (0xFFB98282)
YUV	146.4450, -8.1074, 33.8127
Hunter-Lab	52.8122, 15.8014, 9.1097

Details

The Decimal color **12157570** is a light color, and the websafe version is hex **CC9999**. A complement of this color would be **8567225**, and the grayscale version is **9671571**.

A 20% lighter version of the original color is **15906743**, and **8540241** is the 20% darker color. If you saturate the color by 10%, you get **12152944**, and if you desaturate by 10%, it is **12162453**.

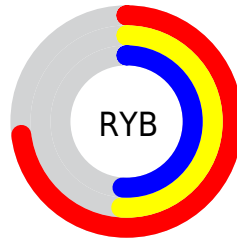
Distribution



Red (73%)

Green (51%)

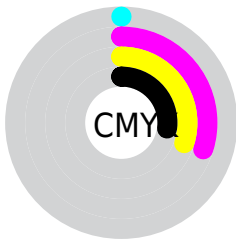
Blue (51%)



Red (73%)

Yellow (51%)

Blue (51%)

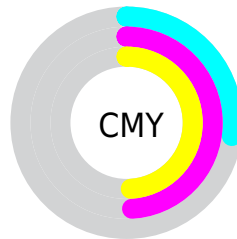


Cyan (0%)

Magenta (30%)

Yellow (30%)

Black (27%)



Cyan (27%)

Magenta (49%)

Yellow (49%)

Brightness & Saturation Gradients

These gradients show how the Decimal color 12157570 changes by changing the brightness by 10 percent. The first figure shows a shift by +10% for each color and the second figure -10%.

Similar to the brightness gradients but the following saturation gradients show a change of the Decimal color 12157570 by changing the saturation by 10% instead.

 12157570

 12157570

16777215

 10316137

 15906743

 8540241

 16765906

 6830394


 16773359


 5186084


 3542031

 2228225

 0


 12157570


 12157570

 12152944

 12162453

 12148061


 12167079

 12143178


 12171962


 12138552

 12176588

 12133926


 12181214

 12129043

 12186097

 12124417

 12189695

 12124160

Harmonies

Analogous

The Analogous color harmony consists of three colors that are next to each other on the color wheel.



11829910



12157570



11765361

Triad

The Triadic color harmony groups three colors that are evenly spaced from another and form a triangle on the color wheel.



12157570



7903351



7312567

Complementary

The Complementary color scheme is a pair of colors which are on the opposite of each other on the color wheel.



12157570



8567225

Split Complementary

Split-complementary colors differ from the complementary color scheme. The scheme consists of three colors, the original color and two neighbors of the complement color.



5872047



12157570



6462346

Square

The Square scheme is like the rectangle color scheme, but the four colors are evenly spaced on the color wheel.



12157570



9409386



5610398



9211317

Rectangle

The Rectangle color scheme consists of four colors that form a rectangle on the color wheel.



12157570



11176810



5610398



6788790

Sweetspot

The Sweet Spot groups the original color and five complimentary colors.



12157570



15784666



12157625



7891819



16250871



7895160

Same Dimension

The Same Dimension uses a secret algorithm to generate beautiful new colors.



12157570



15767961



12164482



6050643



10223616



1835008

Inverse Universe

The Inverse Universe completely reimagines the original color for something new.



8567225



10088688



8560057



5463132



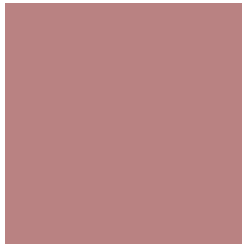
40092



7196

Previews

White Background



This preview shows how the Decimal color 12157570 looks on a white background.

Color Contrast Check

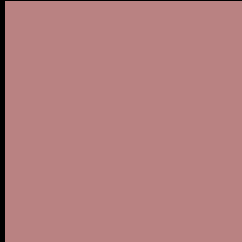
Large Text (above 18pt) WCAG AA ✓ Pass

Any Text WCAG AA × Fail

Large Text (above 18pt) WCAG AAA × Fail

Any Text WCAG AAA × Fail

Black Background



This preview shows how the Decimal color 12157570 looks on a black background.

Color Contrast Check

Large Text (above 18pt) WCAG AA ✓ Pass

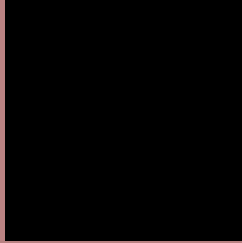
Any Text WCAG AA ✓ Pass

Large Text (above 18pt) WCAG AAA ✓ Pass

Any Text WCAG AAA × Fail

If you want to check with other color combinations, try the [Color Contrast Checker](#).

Decimal 12157570 Background



This preview shows how black text looks on a background with the Decimal color 12157570.




This preview shows how white text looks on a background with the Decimal color 12157570.

Color Blindness Simulation

Color vision deficiency is a very complex topic, and I could not describe the different causes any better than Wikipedia does, so if you want to learn more, you should check out their [article about color blindness](#).

Dichromacy





Tritanopia
12222858

Trichromacy



Original Color
12157570

Protanomaly
10652550

Deuteranomaly
11307137

Tritanomaly
12222855

Monochromacy



Original Color
12157570

Achromatopsia
9605778

Achromatomaly
10521740

CSS Examples

Text

The CSS property to change the color of the text to Decimal 12157570 is called "color". The color property can be set on classes, ids or directly on the HTML element.

This example shows how text in the color #B98282 looks like.

```
.text, #text, p{  
  color:#B98282  
}
```

If you want to add a text shadow in that color use the text-shadow property, you can generate a text shadow directly with our [CSS Text Shadow Generator](#).

Here you see how black text with a 4 pixel #B98282 colored shadow looks like.

```
.shadow{ text-shadow: 4px 4px 2px #B98282
}
```

Border

The CSS property to change the border of an element to Decimal 12157570 is called "border". The border property can be set on classes, ids or directly on the HTML element.

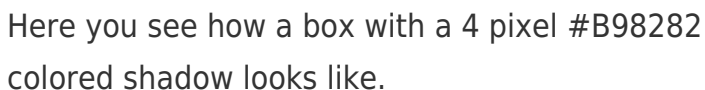
This example shows the color as border, it can be applied via the CSS property "border" or "border-color".

```
.border, #border, table{ border:4px solid
#B98282 }
```

If only the border color should be changed use the property `border-color`.

```
.border{ border-color:#B98282 }
```

If you want to add a box shadow in that color use:



Here you see how a box with a 4 pixel #B98282 colored shadow looks like.

```
.boxshadow{ -moz-box-shadow:4px 4px 4px  
4px #B98282; -webkit-box-shadow:4px 4px  
4px 4px #B98282; box-shadow:4px 4px 4px  
4px #B98282 }
```

Background

The CSS property to change the background color of an element to Decimal 12157570 is called "background". The background property can be set on classes, ids or directly on the HTML element.

```
.background, #background, body{  
background:#B98282 }
```

If only the background color should be changed can be used:

```
.background{ background-color:#B98282 }
```

This example shows the color as background, it is applied via the CSS property "background".

To optimize and compress your CSS code, you can use our [online CSS compressor and optimizer](#) based on csstidy. If you want to create a linear or radial gradient as background or border, check our [CSS Gradient Generator](#).

Hey! You found this booklet interesting? Support Converting Colors with the new Membership Option!

The pro membership hides all ads, plus gives you double the colors in the color bucket, and more awesome pro features!

[Learn more, Memberships starting at \\$2.50/m!](#)

**Follow me
on Twitter!**

@ConvertingColor