

Converting Colors

Decimal(12158595)

Have a look what the booklet for
Decimal(12158595) contains.

Decimal(12158595)	3
<i>Conversions</i>	4
<i>Details</i>	6
<i>Harmonies</i>	11
<i>Previews</i>	23
<i>Color Blindness Simulation</i>	26
<i>CSS Examples</i>	29

Color

Decimal(12158595)

Conversions

Conversions Part 1

Format	Color
Hex	B98683
RGB	185, 134, 131
RGB Percent	73%, 53%, 51%
CMY	0.2745, 0.4745, 0.4863
CMYK	0.00, 0.28, 0.29, 0.27
HSL	3°, 28%, 62%
HSV	3°, 29%, 73%
XYZ	32.6294, 29.0032, 25.3511
YIQ	148.9070, 31.3590, 9.8790

Conversions

Conversions Part 2

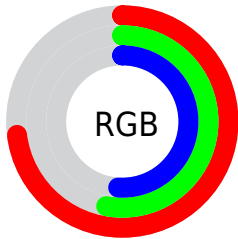
Format	Color
RYB	185, 134, 131
Decimal	12158595
CIELab	60.78, 19.13, 9.35
CIELCh	61, 21.295, 26.038
Yxy	29.0032, 0.3751, 0.3334
Android (android.graphics.Color)	4290348675 (0xFFB98683)
YUV	148.9070, -8.8282, 31.6536
Hunter-Lab	53.8546, 13.9040, 9.7884

Details

The Decimal color **12158595** is a light color, and the websafe version is hex **CC9999**. A complement of this color would be **8631993**, and the grayscale version is **9803157**.

A 20% lighter version of the original color is **15907768**, and **8606802** is the 20% darker color. If you saturate the color by 10%, you get **12154225**, and if you desaturate by 10%, it is **12162965**.

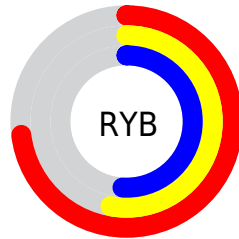
Distribution



Red (73%)

Green (53%)

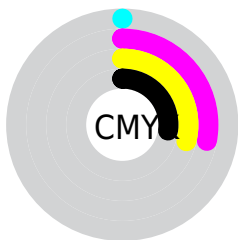
Blue (51%)



Red (73%)

Yellow (53%)

Blue (51%)

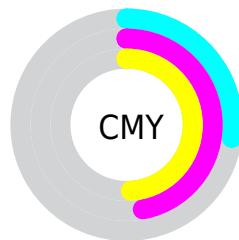


Cyan (0%)

Magenta (28%)

Yellow (29%)

Black (27%)



Cyan (27%)


Magenta (47%)


Yellow (49%)

Brightness & Saturation Gradients

These gradients show how the Decimal color 12158595 changes by changing the brightness by 10 percent. The first figure shows a shift by +10% for each color and the second figure -10%.

Similar to the brightness gradients but the following saturation gradients show a change of the Decimal color 12158595 by changing the saturation by 10% instead.

 12158595

 12158595

16777215

 10317162

 15907768

 8606802

 16766932

 6831163


 16774384

 5187109


 3608848

 2293760

 0


 12158595


 12158595

 12154225

 12162965

 12149598

 12167592

 12145227

 12171963


 12140601

 12176589

 12136231

 12180959

 12131604

 12185586

 12127233

 12189695

 12126720

Harmonies

Analogous

The Analogous color harmony consists of three colors that are next to each other on the color wheel.



11961750



12158595



11700852

Triad

The Triadic color harmony groups three colors that are evenly spaced from another and form a triangle on the color wheel.



12158595



8035197



7968184

Complementary

The Complementary color scheme is a pair of colors which are on the opposite of each other on the color wheel.



12158595



8631993

Split Complementary

Split-complementary colors differ from the complementary color scheme. The scheme consists of three colors, the original color and two neighbors of the complement color.



6527665



12158595



6725007

Square

The Square scheme is like the rectangle color scheme, but the four colors are evenly spaced on the color wheel.



12158595



9410161



6069666



9605044

Rectangle

The Rectangle color scheme consists of four colors that form a rectangle on the color wheel.



12158595



11112047



6069666



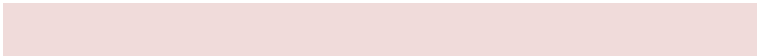
7378871

Sweetspot

The Sweet Spot groups the original color and five complimentary colors.



12158595



15784922



12157878



7891819



16250871



7895160

Same Dimension

The Same Dimension uses a secret algorithm to generate beautiful new colors.



12158595



15769756



12165507



6050643



10225920



1835520

Inverse Universe

The Inverse Universe completely reimagines the original color for something new.



8631993



10284016



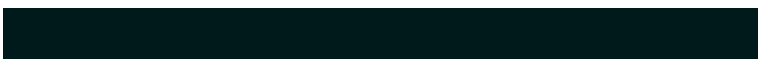
8625081



5462876



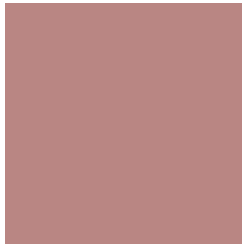
37788



6684

Previews

White Background



This preview shows how the Decimal color 12158595 looks on a white background.

Color Contrast Check

Large Text (above 18pt) WCAG AA ✓ Pass

Any Text WCAG AA × Fail

Large Text (above 18pt) WCAG AAA × Fail

Any Text WCAG AAA × Fail

Black Background



This preview shows how the Decimal color 12158595 looks on a black background.

Color Contrast Check

Large Text (above 18pt) WCAG AA ✓ Pass

Any Text WCAG AA ✓ Pass

Large Text (above 18pt) WCAG AAA ✓ Pass

Any Text WCAG AAA × Fail

If you want to check with other color combinations, try the [Color Contrast Checker](#).

Decimal 12158595 Background



This preview shows how black text looks on a background with the Decimal color 12158595.




This preview shows how white text looks on a background with the Decimal color 12158595.

Color Blindness Simulation

Color vision deficiency is a very complex topic, and I could not describe the different causes any better than Wikipedia does, so if you want to learn more, you should check out their [article about color blindness](#).

Dichromacy





Tritanopia
12223630

Trichromacy



Original Color
12158595

Protanomaly
10784391

Deuteranomaly
11438978

Tritanomaly
12223882

Monochromacy



Original Color
12158595

Achromatopsia
9803157

Achromatomaly
10653838

CSS Examples

Text

The CSS property to change the color of the text to Decimal 12158595 is called "color". The color property can be set on classes, ids or directly on the HTML element.

This example shows how text in the color #B98683 looks like.

```
.text, #text, p{  
    color:#B98683  
}
```

If you want to add a text shadow in that color use the text-shadow property, you can generate a text shadow directly with our [CSS Text Shadow Generator](#).

Here you see how black text with a 4 pixel #B98683 colored shadow looks like.

```
.shadow{ text-shadow: 4px 4px 2px #B98683
}
```

Border

The CSS property to change the border of an element to Decimal 12158595 is called "border". The border property can be set on classes, ids or directly on the HTML element.

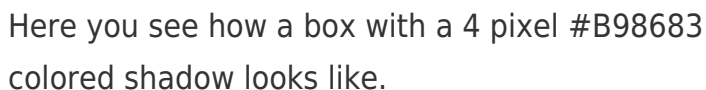
This example shows the color as border, it can be applied via the CSS property "border" or "border-color".

```
.border, #border, table{ border:4px solid
#B98683 }
```

If only the border color should be changed use the property `border-color`.

```
.border{ border-color:#B98683 }
```

If you want to add a box shadow in that color use:



Here you see how a box with a 4 pixel #B98683 colored shadow looks like.

```
.boxshadow{ -moz-box-shadow:4px 4px 4px  
4px #B98683; -webkit-box-shadow:4px 4px  
4px 4px #B98683; box-shadow:4px 4px 4px  
4px #B98683 }
```

Background

The CSS property to change the background color of an element to Decimal 12158595 is called "background". The background property can be set on classes, ids or directly on the HTML element.

```
.background, #background, body{  
background:#B98683 }
```

If only the background color should be changed can be used:

```
.background{ background-color:#B98683 }
```

This example shows the color as background, it is applied via the CSS property "background".

To optimize and compress your CSS code, you can use our [online CSS compressor and optimizer](#) based on csstidy. If you want to create a linear or radial gradient as background or border, check our [CSS Gradient Generator](#).

Hey! You found this booklet interesting? Support Converting Colors with the new Membership Option!

The pro membership hides all ads, plus gives you double the colors in the color bucket, and more awesome pro features!

[Learn more, Memberships starting at \\$2.50/m!](#)

**Follow me
on Twitter!**

@ConvertingColor