

Converting Colors

Decimal(12161171)

Have a look what the booklet for
Decimal(12161171) contains.

Decimal(12161171)	3
<i>Conversions</i>	4
<i>Details</i>	6
<i>Harmonies</i>	11
<i>Previews</i>	23
<i>Color Blindness Simulation</i>	26
<i>CSS Examples</i>	29

Color

Decimal(12161171)

Conversions

Conversions Part 1

Format	Color
Hex	B99093
RGB	185, 144, 147
RGB Percent	73%, 56%, 58%
CMY	0.2745, 0.4353, 0.4235
CMYK	0.00, 0.22, 0.21, 0.27
HSL	356°, 23%, 65%
HSV	356°, 22%, 73%
XYZ	35.2473, 32.3674, 31.9936
YIQ	156.6010, 23.4730, 9.6250

Conversions

Conversions Part 2

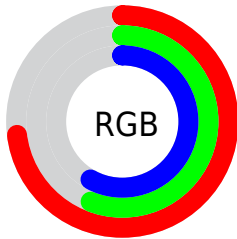
Format	Color
RYB	185, 144, 147
Decimal	12161171
CIELab	63.65, 15.93, 4.36
CIElCh	64, 16.511, 15.300
Yxy	32.3674, 0.3539, 0.3249
Android (android.graphics.Color)	4290351251 (0xFFB99093)
YUV	156.6010, -4.7333, 24.9059
Hunter-Lab	56.8923, 11.0270, 6.4828

Details

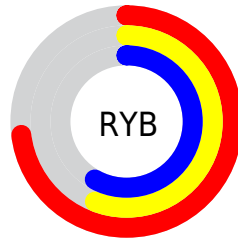
The Decimal color **12161171** is a light color, and the websafe version is hex **CC9999**. A complement of this color would be **9484726**, and the grayscale version is **10329501**.

A 20% lighter version of the original color is **15910601**, and **8609121** is the 20% darker color. If you saturate the color by 10%, you get **12156546**, and if you desaturate by 10%, it is **12166052**.

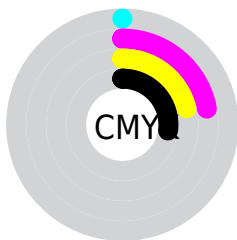
Distribution



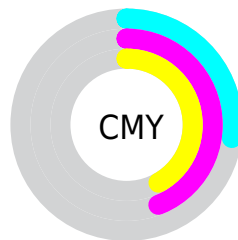
- Red (73%)
- Green (56%)
- Blue (58%)



- Red (73%)
- Yellow (56%)
- Blue (58%)



- Cyan (0%)
- Magenta (22%)
- Yellow (21%)
- Black (27%)




- Cyan (27%)
- Magenta (44%)
- Yellow (42%)

Brightness & Saturation Gradients

These gradients show how the Decimal color 12161171 changes by changing the brightness by 10 percent. The first figure shows a shift by +10% for each color and the second figure -10%.

Similar to the brightness gradients but the following saturation gradients show a change of the Decimal color 12161171 by changing the saturation by 10% instead.

 12161171

 12161171

16777215

 10385017

 15910601

 8609121

 16769765


 6899273

 5320498


 3741981

 2424835

 0


 12161171

 12161171


 12156546

 12166052

 12151665

 12170677

 12147040

 12175558


 12142158

 12180184

 12137533


 12185065

 12132652

 12189690

 12127771

 12189695

 12124174

Harmonies

Analogous

The Analogous color harmony consists of three colors that are next to each other on the color wheel.



11768226



12161171



11965062

Triad

The Triadic color harmony groups three colors that are evenly spaced from another and form a triangle on the color wheel.



12161171



9281669



8494774

Complementary

The Complementary color scheme is a pair of colors which are on the opposite of each other on the color wheel.



12161171



9484726

Split Complementary

Split-complementary colors differ from the complementary color scheme. The scheme consists of three colors, the original color and two neighbors of the complement color.



7709102



12161171



8233618

Square

The Square scheme is like the rectangle color scheme, but the four colors are evenly spaced on the color wheel.



12161171



10394750



7644065



9673142

Rectangle

The Rectangle color scheme consists of four colors that form a rectangle on the color wheel.



12161171



11572608



7644065



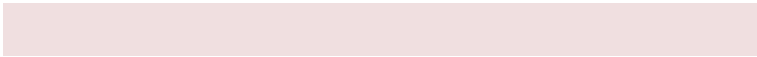
8167348

Sweetspot

The Sweet Spot groups the original color and five complimentary colors.



12161171



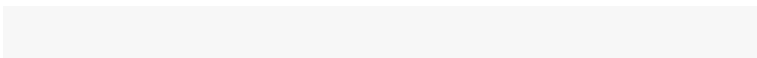
15785952



11964601



7892591



16250871



7895160

Same Dimension

The Same Dimension uses a secret algorithm to generate beautiful new colors.



12161171



15773620



12165520



6050643



10223627



1835010

Inverse Universe

The Inverse Universe completely reimagines the original color for something new.



12161171



15773620



9480377



6050643



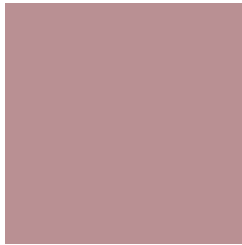
10223627



1835010

Previews

White Background



This preview shows how the Decimal color 12161171 looks on a white background.

Color Contrast Check

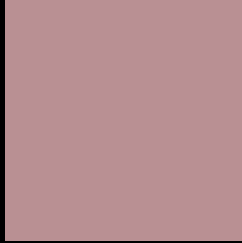
Large Text (above 18pt) WCAG AA × Fail

Any Text WCAG AA × Fail

Large Text (above 18pt) WCAG AAA × Fail

Any Text WCAG AAA × Fail

Black Background



This preview shows how the Decimal color 12161171 looks on a black background.

Color Contrast Check

Large Text (above 18pt) WCAG AA ✓ Pass

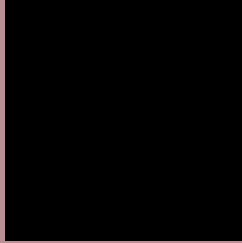
Any Text WCAG AA ✓ Pass

Large Text (above 18pt) WCAG AAA ✓ Pass

Any Text WCAG AAA ✓ Pass

If you want to check with other color combinations, try the [Color Contrast Checker](#).

Decimal 12161171 Background



This preview shows how black text looks on a background with the Decimal color 12161171.



This preview shows how white text looks on a background with the Decimal color 12161171.

Color Blindness Simulation

Color vision deficiency is a very complex topic, and I could not describe the different causes any better than Wikipedia does, so if you want to learn more, you should check out their [article about color blindness](#).

Dichromacy



Original Color
12161171

Protanopia
10394264

Deuteranopia
11310482



Tritanopia
12226458

Trichromacy



Original Color
12161171

Protanomaly
11048598

Deuteranomaly
11637650

Tritanomaly
12226455

Monochromacy



Original Color
12161171

Achromatopsia
10329501

Achromatomaly
10983577

CSS Examples

Text

The CSS property to change the color of the text to Decimal 12161171 is called "color". The color property can be set on classes, ids or directly on the HTML element.

This example shows how text in the color #B99093 looks like.

```
.text, #text, p{  
    color:#B99093  
}
```

If you want to add a text shadow in that color use the text-shadow property, you can generate a text shadow directly with our [CSS Text Shadow Generator](#).

Here you see how black text with a 4 pixel #B99093 colored shadow looks like.

```
.shadow{ text-shadow: 4px 4px 2px #B99093
}
```

Border

The CSS property to change the border of an element to Decimal 12161171 is called "border". The border property can be set on classes, ids or directly on the HTML element.

This example shows the color as border, it can be applied via the CSS property "border" or "border-color".

```
.border, #border, table{ border:4px solid
#B99093 }
```

If only the border color should be changed use the property `border-color`.

```
.border{ border-color:#B99093 }
```

If you want to add a box shadow in that color use:

Here you see how a box with a 4 pixel #B99093 colored shadow looks like.

```
.boxshadow{ -moz-box-shadow:4px 4px 4px  
4px #B99093; -webkit-box-shadow:4px 4px  
4px 4px #B99093; box-shadow:4px 4px 4px  
4px #B99093 }
```

Background

The CSS property to change the background color of an element to Decimal 12161171 is called "background". The background property can be set on classes, ids or directly on the HTML element.

```
.background, #background, body{  
background:#B99093 }
```

If only the background color should be changed can be used:

```
.background{ background-color:#B99093 }
```

This example shows the color as background, it is applied via the CSS property "background".

To optimize and compress your CSS code, you can use our [online CSS compressor and optimizer](#) based on csstidy. If you want to create a linear or radial gradient as background or border, check our [CSS Gradient Generator](#).

Hey! You found this booklet interesting? Support Converting Colors with the new Membership Option!

The pro membership hides all ads, plus gives you double the colors in the color bucket, and more awesome pro features!

[Learn more, Memberships starting at \\$2.50/m!](#)

**Follow me
on Twitter!**

@ConvertingColor