

Converting Colors

Decimal(12162677)

Have a look what the booklet for
Decimal(12162677) contains.

Decimal(12162677)	3
<i>Conversions</i>	4
<i>Details</i>	6
<i>Harmonies</i>	11
<i>Previews</i>	23
<i>Color Blindness Simulation</i>	26
<i>CSS Examples</i>	29

Color

Decimal(12162677)

Conversions

Conversions Part 1

Format	Color
Hex	B99675
RGB	185, 150, 117
RGB Percent	73%, 59%, 46%
CMY	0.2745, 0.4118, 0.5412
CMYK	0.00, 0.19, 0.37, 0.27
HSL	29°, 33%, 59%
HSV	29°, 37%, 73%
XYZ	34.1248, 33.4113, 21.4801
YIQ	156.7030, 31.4530, -2.8430

Conversions

Conversions Part 2

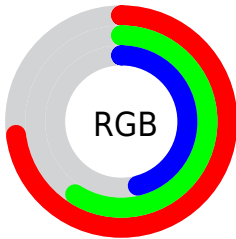
Format	Color
RYB	185, 181, 117
Decimal	12162677
CIELab	64.49, 8.42, 22.35
CIELCh	64, 23.886, 69.361
Yxy	33.4113, 0.3834, 0.3753
Android (android.graphics.Color)	4290352757 (0xFFB99675)
YUV	156.7030, -19.5736, 24.8165
Hunter-Lab	57.8025, 4.2264, 18.4289

Details

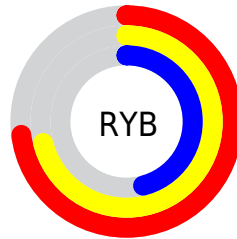
The Decimal color **12162677** is a light color, and the websafe version is hex **CC9966**. A complement of this color would be **7706809**, and the grayscale version is **10329501**.

A 20% lighter version of the original color is **15912105**, and **8610628** is the 20% darker color. If you saturate the color by 10%, you get **12160099**, and if you desaturate by 10%, it is **12165256**.

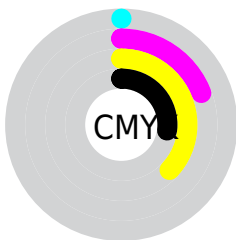
Distribution



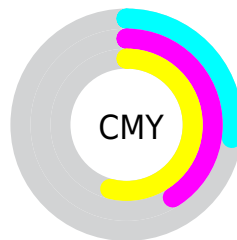
- Red (73%)
- Green (59%)
- Blue (46%)



- Red (73%)
- Yellow (71%)
- Blue (46%)



- Cyan (0%)
- Magenta (19%)
- Yellow (37%)
- Black (27%)



- Cyan (27%)
- Magenta (41%)
- Yellow (54%)

Brightness & Saturation Gradients

These gradients show how the Decimal color 12162677 changes by changing the brightness by 10 percent. The first figure shows a shift by +10% for each color and the second figure -10%.

Similar to the brightness gradients but the following saturation gradients show a change of the Decimal color 12162677 by changing the saturation by 10% instead.

 12162677

 12162677

16777215

 10320988

 15912105

 8610628

 16771269

 6834990

 16777185

 5190936

16777213

 3612416

 2099456


 0


 12162677

 12162677

 12160099

 12165256


 12157776

 12167578

 12155197

 12170157

 12152875

 12172479

 12150296


 12175058


 12147974

 12177380

 12147200

 12179958

 12182271

 12184831

Harmonies

Analogous

The Analogous color harmony consists of three colors that are next to each other on the color wheel.



12947586



12162677



10853746

Triad

The Triadic color harmony groups three colors that are evenly spaced from another and form a triangle on the color wheel.



12162677



6465699



11048381

Complementary

The Complementary color scheme is a pair of colors which are on the opposite of each other on the color wheel.



12162677



7706809

Split Complementary

Split-complementary colors differ from the complementary color scheme. The scheme consists of three colors, the original color and two neighbors of the complement color.



9149638



12162677



6203319

Square

The Square scheme is like the rectangle color scheme, but the four colors are evenly spaced on the color wheel.



12162677



7710605



7316420



12423084

Rectangle

The Rectangle color scheme consists of four colors that form a rectangle on the color wheel.



12162677



9871735



7316420



10459073

Sweetspot

The Sweet Spot groups the original color and five complimentary colors.



12162677



15786709



12154264



7893096



16250871



7895160

Same Dimension

The Same Dimension uses a secret algorithm to generate beautiful new colors.



12162677



15776134



12171381



6051667



10242816



1838592

Inverse Universe

The Inverse Universe completely reimagines the original color for something new.



7706809



8830448



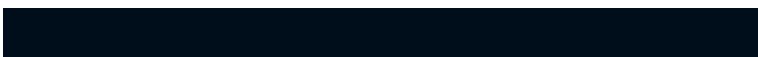
7698105



5461852



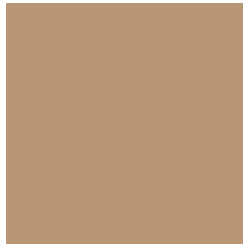
20636



3612

Previews

White Background



This preview shows how the Decimal color 12162677 looks on a white background.

Color Contrast Check

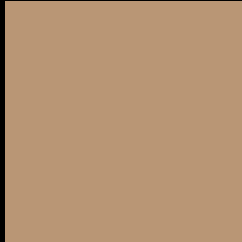
Large Text (above 18pt) WCAG AA × Fail

Any Text WCAG AA × Fail

Large Text (above 18pt) WCAG AAA × Fail

Any Text WCAG AAA × Fail

Black Background



This preview shows how the Decimal color 12162677 looks on a black background.

Color Contrast Check

Large Text (above 18pt) WCAG AA ✓ Pass

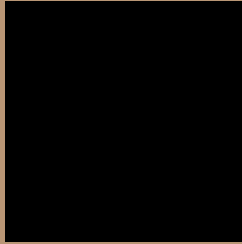
Any Text WCAG AA ✓ Pass

Large Text (above 18pt) WCAG AAA ✓ Pass

Any Text WCAG AAA ✓ Pass

If you want to check with other color combinations, try the [Color Contrast Checker](#).

Decimal 12162677 Background



This preview shows how black text looks on a background with the Decimal color 12162677.



This preview shows how white text looks on a background with the Decimal color 12162677.

Color Blindness Simulation

Color vision deficiency is a very complex topic, and I could not describe the different causes any better than Wikipedia does, so if you want to learn more, you should check out their [article about color blindness](#).


Dichromacy



Original Color
12162677

Protanopia
10984568

Deuteranopia
12162677



Tritanopia
12423580

Trichromacy



Original Color
12162677

Protanomaly
11442807

Deuteranomaly
12162677

Tritanomaly
12358542

Monochromacy



Original Color
12162677

Achromatopsia
10329501

Achromatomaly
10984078

CSS Examples

Text

The CSS property to change the color of the text to Decimal 12162677 is called "color". The color property can be set on classes, ids or directly on the HTML element.

This example shows how text in the color #B99675 looks like.

```
.text, #text, p{  
    color:#B99675  
}
```

If you want to add a text shadow in that color use the text-shadow property, you can generate a text shadow directly with our [CSS Text Shadow Generator](#).

Here you see how black text with a 4 pixel #B99675 colored shadow looks like.

```
.shadow{ text-shadow: 4px 4px 2px #B99675  
}
```

Border

The CSS property to change the border of an element to Decimal 12162677 is called "border". The border property can be set on classes, ids or directly on the HTML element.

This example shows the color as border, it can be applied via the CSS property "border" or "border-color".

```
.border, #border, table{ border:4px solid  
#B99675 }
```

If only the border color should be changed use the property border-color.

```
.border{ border-color:#B99675 }
```

If you want to add a box shadow in that color use:

Here you see how a box with a 4 pixel #B99675 colored shadow looks like.

```
.boxshadow{ -moz-box-shadow:4px 4px 4px  
4px #B99675; -webkit-box-shadow:4px 4px  
4px 4px #B99675; box-shadow:4px 4px 4px  
4px #B99675 }
```

Background

The CSS property to change the background color of an element to Decimal 12162677 is called "background". The background property can be set on classes, ids or directly on the HTML element.

```
.background, #background, body{  
background:#B99675 }
```

If only the background color should be changed can be used:

```
.background{ background-color:#B99675 }
```

This example shows the color as background, it is applied via the CSS property "background".

To optimize and compress your CSS code, you can use our [online CSS compressor and optimizer](#) based on csstidy. If you want to create a linear or radial gradient as background or border, check our [CSS Gradient Generator](#).

Hey! You found this booklet interesting? Support Converting Colors with the new Membership Option!

The pro membership hides all ads, plus gives you double the colors in the color bucket, and more awesome pro features!

[Learn more, Memberships starting at \\$2.50/m!](#)

**Follow me
on Twitter!**

@ConvertingColor