

Converting Colors

Decimal(12220802)

Have a look what the booklet for
Decimal(12220802) contains.

Decimal(12220802)	3
<i>Conversions</i>	4
<i>Details</i>	6
<i>Harmonies</i>	11
<i>Previews</i>	23
<i>Color Blindness Simulation</i>	26
<i>CSS Examples</i>	29

Color

Decimal(12220802)

Conversions

Conversions Part 1

Format	Color
Hex	BA7982
RGB	186, 121, 130
RGB Percent	73%, 47%, 51%
CMY	0.2706, 0.5255, 0.4902
CMYK	0.00, 0.35, 0.30, 0.27
HSL	352°, 32%, 60%
HSV	352°, 35%, 73%
XYZ	31.1163, 25.7256, 24.4446
YIQ	141.4610, 35.8510, 16.5790

Conversions

Conversions Part 2

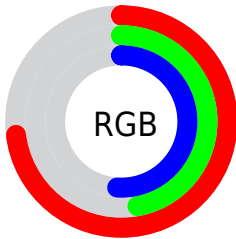
Format	Color
R_{YB}	186, 121, 130
Decimal	12220802
CIE _{Lab}	57.78, 26.61, 5.64
CIE _{LCh}	58, 27.198, 11.979
Yxy	25.7256, 0.3828, 0.3165
Android (android.graphics.Color)	4290410882 (0xFFBA7982)
YUV	141.4610, -5.6503, 39.0607
Hunter-Lab	50.7204, 20.7470, 6.9295

Details

The Decimal color **12220802** is a dark color, and the websafe version is hex **996666**. A complement of this color would be **7977649**, and the grayscale version is **9276813**.

A 20% lighter version of the original color is **15969975**, and **8603473** is the 20% darker color. If you saturate the color by 10%, you get **12215922**, and if you desaturate by 10%, it is **12225682**.

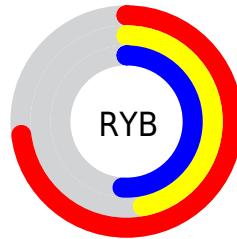
Distribution



Red (73%)

Green (47%)

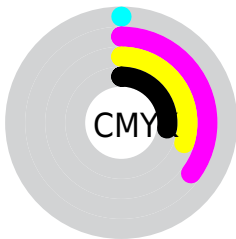
Blue (51%)



Red (73%)

Yellow (47%)

Blue (51%)

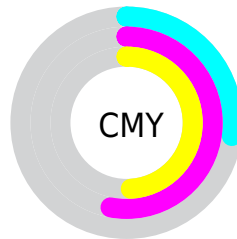


Cyan (0%)

Magenta (35%)

Yellow (30%)

Black (27%)



Cyan (27%)

Magenta (53%)

Yellow (49%)

Brightness & Saturation Gradients

These gradients show how the Decimal color 12220802 changes by changing the brightness by 10 percent. The first figure shows a shift by +10% for each color and the second figure -10%.

Similar to the brightness gradients but the following saturation gradients show a change of the Decimal color 12220802 by changing the saturation by 10% instead.

 12220802

 12220802

16777215

 10379369

 15969975

 8603473

 16763602

 6893626

 16770799

 5183780

 3539471

 2031617

 0

 12220802

 12220802

 12215922

 12225682

 12211298

 12230306

 12206418

 12235186

 12201794

 12239810

 12196914

 12244690

 12192034

 12249570

 12189722

 12254194

 12255231

Harmonies

Analogous

The Analogous color harmony consists of three colors that are next to each other on the color wheel.



11631514



12220802



11959660

Triad

The Triadic color harmony groups three colors that are evenly spaced from another and form a triangle on the color wheel.



12220802



7836519



5673399

Complementary

The Complementary color scheme is a pair of colors which are on the opposite of each other on the color wheel.



12220802



7977649

Split Complementary

Split-complementary colors differ from the complementary color scheme. The scheme consists of three colors, the original color and two neighbors of the complement color.



4036266



12220802



6002555

Square

The Square scheme is like the rectangle color scheme, but the four colors are evenly spaced on the color wheel.



12220802



9604188



4364436



8030905

Rectangle

The Rectangle color scheme consists of four colors that form a rectangle on the color wheel.



12220802



11436642



4364436



4953012

Sweetspot

The Sweet Spot groups the original color and five complimentary colors.



12220802



15915741



11565498



8023150



16448250



8026746

Same Dimension

The Same Dimension uses a secret algorithm to generate beautiful new colors.



12220802



15895963



12226681



6050644



10223638



1835012

Inverse Universe

The Inverse Universe completely reimagines the original color for something new.



12220802



15895963



7971770



6050644



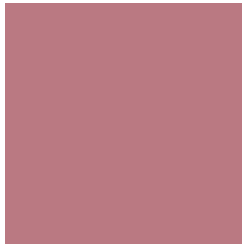
10223638



1835012

Previews

White Background



This preview shows how the Decimal color 12220802 looks on a white background.

Color Contrast Check

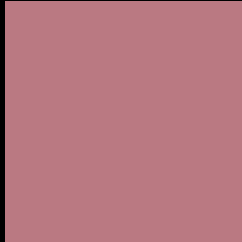
Large Text (above 18pt) WCAG AA ✓ Pass

Any Text WCAG AA × Fail

Large Text (above 18pt) WCAG AAA × Fail

Any Text WCAG AAA × Fail

Black Background



This preview shows how the Decimal color 12220802 looks on a black background.

Color Contrast Check

Large Text (above 18pt) WCAG AA ✓ Pass

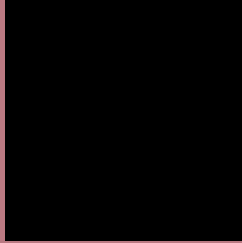
Any Text WCAG AA ✓ Pass

Large Text (above 18pt) WCAG AAA ✓ Pass

Any Text WCAG AAA × Fail

If you want to check with other color combinations, try the [Color Contrast Checker](#).

Decimal 12220802 Background



This preview shows how black text looks on a background with the Decimal color 12220802.



This preview shows how white text looks on a background with the Decimal color 12220802.

Color Blindness Simulation

Color vision deficiency is a very complex topic, and I could not describe the different causes any better than Wikipedia does, so if you want to learn more, you should check out their [article about color blindness](#).

Dichromacy





Tritanopia
12220802

Trichromacy



Original Color
12220802

Protanomaly
10323080

Deuteranomaly
11043201

Tritanomaly
12220802

Monochromacy



Original Color
12220802

Achromatopsia
9276813

Achromatomaly
10323593

CSS Examples

Text

The CSS property to change the color of the text to Decimal 12220802 is called "color". The color property can be set on classes, ids or directly on the HTML element.

This example shows how text in the color #BA7982 looks like.

```
.text, #text, p{  
    color:#BA7982  
}
```

If you want to add a text shadow in that color use the text-shadow property, you can generate a text shadow directly with our [CSS Text Shadow Generator](#).

Here you see how black text with a 4 pixel #BA7982 colored shadow looks like.

```
.shadow{ text-shadow: 4px 4px 2px #BA7982
}
```

Border

The CSS property to change the border of an element to Decimal 12220802 is called "border". The border property can be set on classes, ids or directly on the HTML element.

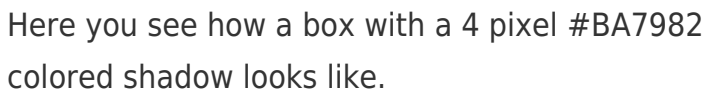
This example shows the color as border, it can be applied via the CSS property "border" or "border-color".

```
.border, #border, table{ border:4px solid
#BA7982 }
```

If only the border color should be changed use the property `border-color`.

```
.border{ border-color:#BA7982 }
```

If you want to add a box shadow in that color use:



Here you see how a box with a 4 pixel #BA7982 colored shadow looks like.

```
.boxshadow{ -moz-box-shadow:4px 4px 4px  
4px #BA7982; -webkit-box-shadow:4px 4px  
4px 4px #BA7982; box-shadow:4px 4px 4px  
4px #BA7982 }
```

Background

The CSS property to change the background color of an element to Decimal 12220802 is called "background". The background property can be set on classes, ids or directly on the HTML element.

```
.background, #background, body{  
background:#BA7982 }
```

If only the background color should be changed can be used:

```
.background{ background-color:#BA7982 }
```

This example shows the color as background, it is applied via the CSS property "background".

To optimize and compress your CSS code, you can use our [online CSS compressor and optimizer](#) based on csstidy. If you want to create a linear or radial gradient as background or border, check our [CSS Gradient Generator](#).

Hey! You found this booklet interesting? Support Converting Colors with the new Membership Option!

The pro membership hides all ads, plus gives you double the colors in the color bucket, and more awesome pro features!

[Learn more, Memberships starting at \\$2.50/m!](#)

**Follow me
on Twitter!**

@ConvertingColor