

# Converting Colors

Decimal(12221564)

Have a look what the booklet for  
Decimal(12221564) contains.

<b>Decimal(12221564)</b> .....	3
<i><b>Conversions</b></i> .....	4
<i><b>Details</b></i> .....	6
<i><b>Harmonies</b></i> .....	11
<i><b>Previews</b></i> .....	23
<i><b>Color Blindness Simulation</b></i> .....	26
<i><b>CSS Examples</b></i> .....	29

# Color

**Decimal(12221564)**

# Conversions

## Conversions Part 1

<b>Format</b>	<b>Color</b>
Hex	BA7C7C
RGB	186, 124, 124
RGB Percent	73%, 49%, 49%
CMY	0.2706, 0.5137, 0.5137
CMYK	0.00, 0.33, 0.33, 0.27
HSL	0°, 31%, 61%
HSV	0°, 33%, 73%
XYZ	31.0954, 26.3096, 22.5081
YIQ	142.5380, 36.9520, 13.1440

# Conversions

## Conversions Part 2

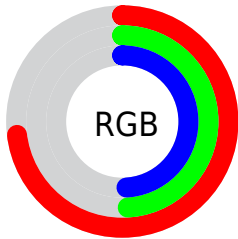
<b>Format</b>	<b>Color</b>
R <sub>Y</sub> B	186, 124, 124
Decimal	12221564
CIE Lab	58.33, 24.14, 9.90
CIE LCh	58, 26.090, 22.297
Yxy	26.3096, 0.3891, 0.3292
Android (android.graphics.Color)	4290411644 (0xFFBA7C7C)
YUV	142.5380, -9.1392, 38.1162
Hunter-Lab	51.2929, 18.4499, 9.8877

# Details

The Decimal color **12221564** is a dark color, and the websafe version is hex **996666**. A complement of this color would be **8174266**, and the grayscale version is **9408399**.

A 20% lighter version of the original color is **16036272**, and **8604235** is the 20% darker color. If you saturate the color by 10%, you get **12216681**, and if you desaturate by 10%, it is **12226447**.

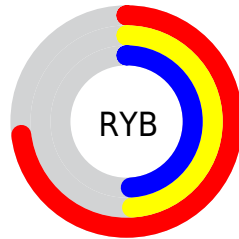
# Distribution



Red (73%)

Green (49%)

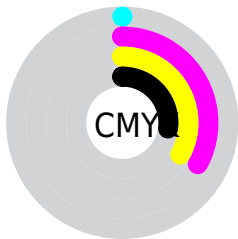
Blue (49%)



Red (73%)

Yellow (49%)

Blue (49%)

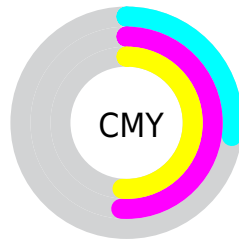


Cyan (0%)

Magenta (33%)

Yellow (33%)

Black (27%)



Cyan (27%)

Magenta (51%)

Yellow (51%)

# Brightness & Saturation Gradients

These gradients show how the Decimal color 12221564 changes by changing the brightness by 10 percent. The first figure shows a shift by +10% for each color and the second figure -10%.

Similar to the brightness gradients but the following saturation gradients show a change of the Decimal color 12221564 by changing the saturation by 10% instead.



 12221564

 12221564

16777215

 10380131

 16036272

 8604235

 16764364

 6894389

 16771560

 5184544

 3540232

 2031617

 0

 12221564

 12221564

 12216681

 12226447

 12212055

 12231073

 12207172


 12235956

 12202546

 12240582

 12197663

 12245465

 12192780

 12250348

 12189696

 12254974

 12255231

# Harmonies

## Analogous

The Analogous color harmony consists of three colors that are next to each other on the color wheel.



11893907



12221564



11764073

# Triad

The Triadic color harmony groups three colors that are evenly spaced from another and form a triangle on the color wheel.



12221564



7378544



6721721

# Complementary

The Complementary color scheme is a pair of colors which are on the opposite of each other on the color wheel.



12221564



8174266

# Split Complementary

Split-complementary colors differ from the complementary color scheme. The scheme consists of three colors, the original color and two neighbors of the complement color.



4822704



12221564



5675141

# Square

The Square scheme is like the rectangle color scheme, but the four colors are evenly spaced on the color wheel.



12221564



9146466



4495773



8882358

# Rectangle

The Rectangle color scheme consists of four colors that form a rectangle on the color wheel.



12221564



11044449



4495773



6001335



# Sweetspot

The Sweet Spot groups the original color and five complimentary colors.



12221564



15915738



12221626



8023148



16448250



8026746



# Same Dimension

The Same Dimension uses a secret algorithm to generate beautiful new colors.



12221564



15896977



12229500



6050643



10223616



1835008



# Inverse Universe

The Inverse Universe completely reimagines the original color for something new.



8174266



9564914



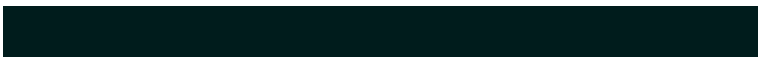
8166330



5463132



40092

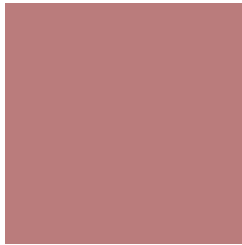


7196



# Previews

## White Background



This preview shows how the Decimal color 12221564 looks on a white background.

## Color Contrast Check

Large Text (above 18pt) WCAG AA ✓ Pass

Any Text WCAG AA × Fail

Large Text (above 18pt) WCAG AAA × Fail

Any Text WCAG AAA × Fail

# Black Background



This preview shows how the Decimal color 12221564 looks on a black background.

## Color Contrast Check

Large Text (above 18pt) WCAG AA ✓ Pass

Any Text WCAG AA ✓ Pass

Large Text (above 18pt) WCAG AAA ✓ Pass

Any Text WCAG AAA × Fail

If you want to check with other color combinations, try the [Color Contrast Checker](#).



## Decimal 12221564 Background



This preview shows how black text looks on a background with the Decimal color 12221564.




This preview shows how white text looks on a background with the Decimal color 12221564.

# Color Blindness Simulation

Color vision deficiency is a very complex topic, and I could not describe the different causes any better than Wikipedia does, so if you want to learn more, you should check out their [article about color blindness](#).

## Dichromacy





**Tritanopia**  
12286852

# Trichromacy



**Original Color**  
12221564

**Protanomaly**  
10520193

**Deuteranomaly**  
11174779

**Tritanomaly**  
12286849

# Monochromacy



**Original Color**  
12221564

**Achromatopsia**  
9408399

**Achromatomaly**  
10455176

# CSS Examples

## Text

The CSS property to change the color of the text to Decimal 12221564 is called "color". The color property can be set on classes, ids or directly on the HTML element.

This example shows how text in the color #BA7C7C looks like.

```
.text, #text, p{  
    color:#BA7C7C  
}
```

If you want to add a text shadow in that color use the text-shadow property, you can generate a text shadow directly with our [CSS Text Shadow Generator](#).

Here you see how black text with a 4 pixel #BA7C7C colored shadow looks like.

```
.shadow{ text-shadow: 4px 4px 2px #BA7C7C  
}
```

## Border

The CSS property to change the border of an element to Decimal 12221564 is called "border". The border property can be set on classes, ids or directly on the HTML element.

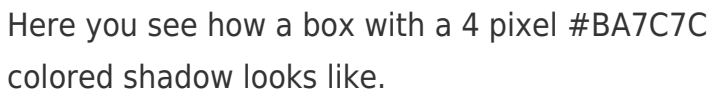
This example shows the color as border, it can be applied via the CSS property "border" or "border-color".

```
.border, #border, table{ border:4px solid  
#BA7C7C }
```

If only the border color should be changed use the property `border-color`.

```
.border{ border-color:#BA7C7C }
```

If you want to add a box shadow in that color use:



Here you see how a box with a 4 pixel `#BA7C7C` colored shadow looks like.

```
.boxshadow{ -moz-box-shadow:4px 4px 4px  
4px #BA7C7C; -webkit-box-shadow:4px 4px  
4px 4px #BA7C7C; box-shadow:4px 4px 4px  
4px #BA7C7C }
```

# Background

The CSS property to change the background color of an element to Decimal 12221564 is called "background". The background property can be set on classes, ids or directly on the HTML element.

```
.background, #background, body{  
background:#BA7C7C }
```

If only the background color should be changed can be used:

```
.background{ background-color:#BA7C7C }
```

This example shows the color as background, it is applied via the CSS property "background".

To optimize and compress your CSS code, you can use our [online CSS compressor and optimizer](#) based on csstidy. If you want to create a linear or radial gradient as background or border, check our [CSS Gradient Generator](#).



Hey! You found this booklet interesting? Support Converting Colors with the new Membership Option!

The pro membership hides all ads, plus gives you double the colors in the color bucket, and more awesome pro features!

**[Learn more, Memberships starting at \\$2.50/m!](#)**

**Follow me  
on Twitter!**

@ConvertingColor