

# Converting Colors

Decimal(12222281)

Have a look what the booklet for  
Decimal(12222281) contains.

<b>Decimal(12222281)</b> .....	3
<i><b>Conversions</b></i> .....	4
<i><b>Details</b></i> .....	6
<i><b>Harmonies</b></i> .....	11
<i><b>Previews</b></i> .....	23
<i><b>Color Blindness Simulation</b></i> .....	26
<i><b>CSS Examples</b></i> .....	29

# Color

**Decimal(12222281)**

# Conversions

## Conversions Part 1

<b>Format</b>	<b>Color</b>
Hex	BA7F49
RGB	186, 127, 73
RGB Percent	73%, 50%, 29%
CMY	0.2706, 0.5020, 0.7137
CMYK	0.00, 0.32, 0.61, 0.27
HSL	29°, 45%, 51%
HSV	29°, 61%, 73%
XYZ	29.0417, 26.0989, 9.8103
YIQ	138.4850, 52.4980, -4.2860

# Conversions

## Conversions Part 2

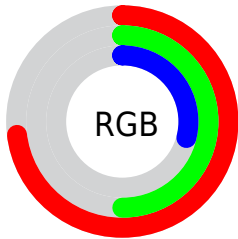
<b>Format</b>	<b>Color</b>
<b>R<sub>YB</sub></b>	186, 176, 73
Decimal	12222281
CIE <sub>Lab</sub>	58.13, 17.24, 38.15
CIE <sub>LCh</sub>	58, 41.865, 65.684
Yxy	26.0989, 0.4471, 0.4018
Android (android.graphics.Color)	4290412361 (0xFFBA7F49)
YUV	138.4850, -32.2841, 41.6707
Hunter-Lab	51.0871, 12.0702, 24.3755

# Details

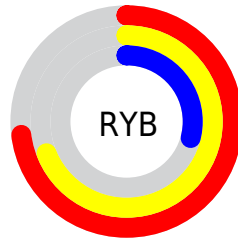
The Decimal color **12222281** is a dark color, and the websafe version is hex **CC9966**. A complement of this color would be **4818106**, and the grayscale version is **9145227**.

A 20% lighter version of the original color is **16102523**, and **8474138** is the 20% darker color. If you saturate the color by 10%, you get **12219702**, and if you desaturate by 10%, it is **12224860**.

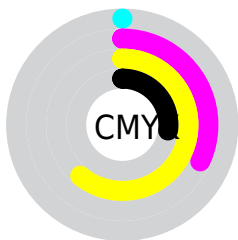
# Distribution



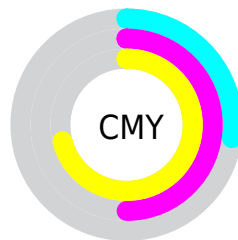
- Red (73%)
- Green (50%)
- Blue (29%)



- Red (73%)
- Yellow (69%)
- Blue (29%)



- Cyan (0%)
- Magenta (32%)
- Yellow (61%)
- Black (27%)



- Cyan (27%)
- Magenta (50%)
- Yellow (71%)

# Brightness & Saturation Gradients

These gradients show how the Decimal color 12222281 changes by changing the brightness by 10 percent. The first figure shows a shift by +10% for each color and the second figure -10%.

Similar to the brightness gradients but the following saturation gradients show a change of the Decimal color 12222281 by changing the saturation by 10% instead.



 12222281

 12222281

16777215

 10315313

 16102523

 8474138

 16764821

 6698753

 16772272

 4923648

 16777164

 3148800

 16777192

 1376256

 0

 12222281

 12222281

 12219702

 12224860

■ 12217380

■ 12227182

■ 12214801

■ 12229761

■ 12212480

■ 12232339

■ 12234918

■ 12237241

■ 12239819

■ 12242398

■ 12244720

# Harmonies

## Analogous

The Analogous color harmony consists of three colors that are next to each other on the color wheel.



13464419



12222281



10193984

# Triad

The Triadic color harmony groups three colors that are evenly spaced from another and form a triangle on the color wheel.



12222281



40850



9994183

# Complementary

The Complementary color scheme is a pair of colors which are on the opposite of each other on the color wheel.



12222281



4818106

# Split Complementary

Split-complementary colors differ from the complementary color scheme. The scheme consists of three colors, the original color and two neighbors of the complement color.



6000084



1222281



40373

# Square

The Square scheme is like the rectangle color scheme, but the four colors are evenly spaced on the color wheel.



12222281



4430956



39118



12546731

# Rectangle

The Rectangle color scheme consists of four colors that form a rectangle on the color wheel.



1222281



8557383



39118



8815822



# Sweetspot

The Sweet Spot groups the original color and five complimentary colors.



1222281



15915975



12208517



8023135



16448250



8026746



# Same Dimension

The Same Dimension uses a secret algorithm to generate beautiful new colors.



12222281



15898177



12236361



6051667



10242560



1838336



# Inverse Universe

The Inverse Universe completely reimagines the original color for something new.



4818106



4300530



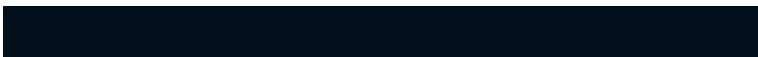
4804026



5461852



20892

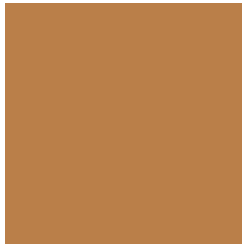


3868



# Previews

## White Background



This preview shows how the Decimal color 12222281 looks on a white background.

## Color Contrast Check

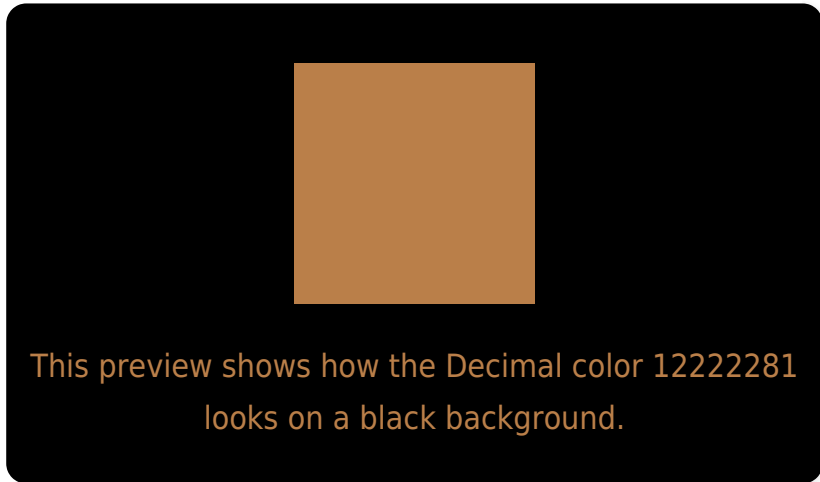
Large Text (above 18pt) WCAG AA ✓ Pass

Any Text WCAG AA × Fail

Large Text (above 18pt) WCAG AAA × Fail

Any Text WCAG AAA × Fail

# Black Background



## Color Contrast Check

Large Text (above 18pt) WCAG AA ✓ Pass

Any Text WCAG AA ✓ Pass

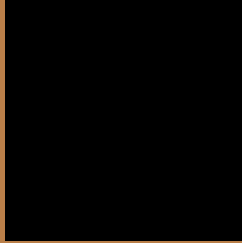
Large Text (above 18pt) WCAG AAA ✓ Pass

Any Text WCAG AAA × Fail

If you want to check with other color combinations, try the [Color Contrast Checker](#).



## Decimal 1222281 Background



This preview shows how black text looks on a background with the Decimal color 1222281.



This preview shows how white text looks on a background with the Decimal color 1222281.

# Color Blindness Simulation

Color vision deficiency is a very complex topic, and I could not describe the different causes any better than Wikipedia does, so if you want to learn more, you should check out their [article about color blindness](#).


## Dichromacy



**Original Color**  
12222281

**Protanopia**  
10128462

**Deuteranopia**  
11306312



**Tritanopia**  
12482689

# Trichromacy



**Original Color**  
12222281

**Protanomaly**  
10913612

**Deuteranomaly**  
11633480

**Tritanomaly**  
12417901

# Monochromacy



**Original Color**  
12222281

**Achromatopsia**  
9079434

**Achromatomaly**  
10192498

# CSS Examples

## Text

The CSS property to change the color of the text to Decimal 12222281 is called "color". The color property can be set on classes, ids or directly on the HTML element.

This example shows how text in the color #BA7F49 looks like.

```
.text, #text, p{  
  color:#BA7F49  
}
```

If you want to add a text shadow in that color use the text-shadow property, you can generate a text shadow directly with our [CSS Text Shadow Generator](#).

Here you see how black text with a 4 pixel #BA7F49 colored shadow looks like.

```
.shadow{ text-shadow: 4px 4px 2px #BA7F49
}
```

## Border

The CSS property to change the border of an element to Decimal 12222281 is called "border". The border property can be set on classes, ids or directly on the HTML element.

This example shows the color as border, it can be applied via the CSS property "border" or "border-color".

```
.border, #border, table{ border:4px solid
#BA7F49 }
```

If only the border color should be changed use the property `border-color`.

```
.border{ border-color:#BA7F49 }
```

If you want to add a box shadow in that color use:

Here you see how a box with a 4 pixel #BA7F49 colored shadow looks like.

```
.boxshadow{ -moz-box-shadow:4px 4px 4px  
4px #BA7F49; -webkit-box-shadow:4px 4px  
4px 4px #BA7F49; box-shadow:4px 4px 4px  
4px #BA7F49 }
```

# Background

The CSS property to change the background color of an element to Decimal 12222281 is called "background". The background property can be set on classes, ids or directly on the HTML element.

```
.background, #background, body{  
background:#BA7F49 }
```

If only the background color should be changed can be used:

```
.background{ background-color:#BA7F49 }
```

This example shows the color as background, it is applied via the CSS property "background".

To optimize and compress your CSS code, you can use our [online CSS compressor and optimizer](#) based on csstidy. If you want to create a linear or radial gradient as background or border, check our [CSS Gradient Generator](#).



Hey! You found this booklet interesting? Support Converting Colors with the new Membership Option!

The pro membership hides all ads, plus gives you double the colors in the color bucket, and more awesome pro features!

**[Learn more, Memberships starting at \\$2.50/m!](#)**

**Follow me  
on Twitter!**

@ConvertingColor