

# Converting Colors

Decimal(12222814)

Have a look what the booklet for  
Decimal(12222814) contains.

<b>Decimal(12222814)</b> .....	3
<b><i>Conversions</i></b> .....	4
<b><i>Details</i></b> .....	6
<b><i>Harmonies</i></b> .....	11
<b><i>Previews</i></b> .....	23
<b><i>Color Blindness Simulation</i></b> .....	26
<b><i>CSS Examples</i></b> .....	29

# Color

**Decimal(12222814)**

# Conversions

## Conversions Part 1

<b>Format</b>	<b>Color</b>
Hex	BA815E
RGB	186, 129, 94
RGB Percent	73%, 51%, 37%
CMY	0.2706, 0.4941, 0.6314
CMYK	0.00, 0.31, 0.49, 0.27
HSL	23°, 40%, 55%
HSV	23°, 49%, 73%
XYZ	30.1203, 26.9478, 14.2036
YIQ	142.0530, 45.2070, 1.1990

# Conversions

## Conversions Part 2

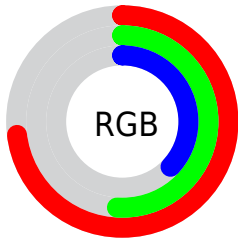
<b>Format</b>	<b>Color</b>
<b>R<sub>YB</sub></b>	186, 150, 94
Decimal	12222814
CIE <sub>Lab</sub>	58.93, 17.93, 27.75
CIE <sub>LCh</sub>	59, 33.039, 57.132
Yxy	26.9478, 0.4226, 0.3781
Android (android.graphics.Color)	4290412894 (0xFFBA815E)
YUV	142.0530, -23.6901, 38.5415
Hunter-Lab	51.9112, 12.7260, 20.1153

# Details

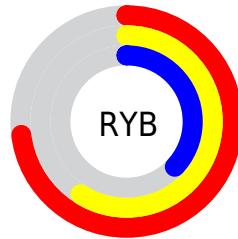
The Decimal color **12222814** is a dark color, and the websafe version is hex **CC9966**. A complement of this color would be **6199226**, and the grayscale version is **9342606**.

A 20% lighter version of the original color is **16037521**, and **8539951** is the 20% darker color. If you saturate the color by 10%, you get **12219723**, and if you desaturate by 10%, it is **12225905**.

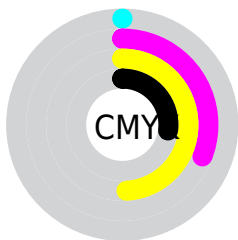
# Distribution



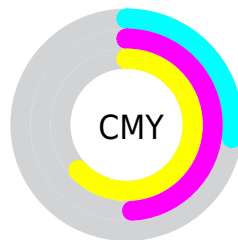
- Red (73%)
- Green (51%)
- Blue (37%)



- Red (73%)
- Yellow (59%)
- Blue (37%)



- Cyan (0%)
- Magenta (31%)
- Yellow (49%)
- Black (27%)



- Cyan (27%)
- Magenta (49%)
- Yellow (63%)

# Brightness & Saturation Gradients

These gradients show how the Decimal color 12222814 changes by changing the brightness by 10 percent. The first figure shows a shift by +10% for each color and the second figure -10%.

Similar to the brightness gradients but the following saturation gradients show a change of the Decimal color 12222814 by changing the saturation by 10% instead.



 12222814

 12222814

16777215

 10381382

 16037521

 8539951

 16765611

 6764569

 16772807

 5054976

 16777187

 3345664

 1703937

 0

 12222814

 12222814

 12219723

 12225905

12216889

12228739

12213798

12231830

12210964

12234664

12207873

12237755

12207872

12240590

12243680

12246515

12249599

# Harmonies

## Analogous

The Analogous color harmony consists of three colors that are next to each other on the color wheel.



13007221



12222814



10718035

# Triad

The Triadic color harmony groups three colors that are evenly spaced from another and form a triangle on the color wheel.



12222814



3972490



9275329

# Complementary

The Complementary color scheme is a pair of colors which are on the opposite of each other on the color wheel.



12222814



6199226

# Split Complementary

Split-complementary colors differ from the complementary color scheme. The scheme consists of three colors, the original color and two neighbors of the complement color.



6263239



12222814



1154471

# Square

The Square scheme is like the rectangle color scheme, but the four colors are evenly spaced on the color wheel.



12222814



6593133



2791870



11566510

# Rectangle

The Rectangle color scheme consists of four colors that form a rectangle on the color wheel.



12222814



9474389



2791870



8358853



# Sweetspot

The Sweet Spot groups the original color and five complimentary colors.



12222814



15916238



12213912



8023396



16448250



8026746



# Same Dimension

The Same Dimension uses a secret algorithm to generate beautiful new colors.



12222814



15899235



12234334



6051411



10238720



1837824



# Inverse Universe

The Inverse Universe completely reimagines the original color for something new.



6199226



6536434



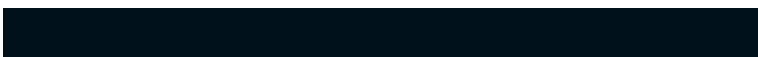
6187706



5462108



24732

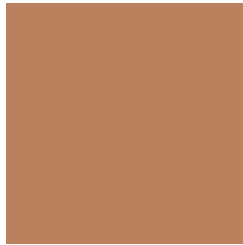


4380



# Previews

## White Background



This preview shows how the Decimal color 12222814 looks on a white background.

## Color Contrast Check

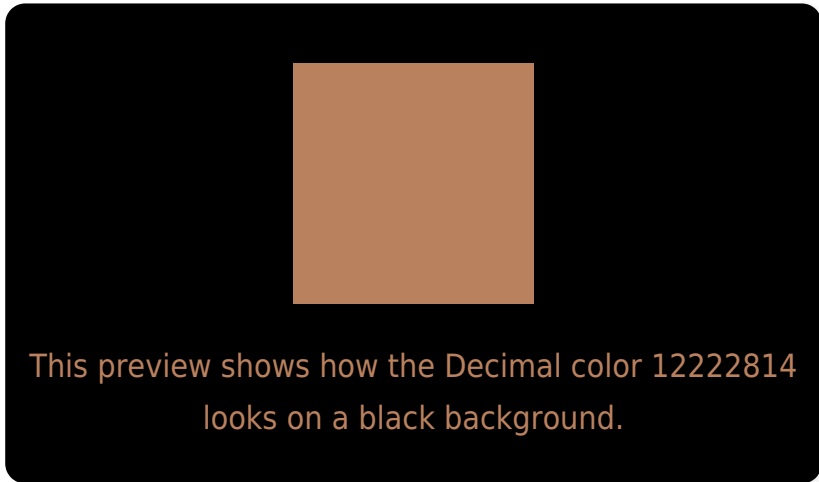
Large Text (above 18pt) WCAG AA ✓ Pass

Any Text WCAG AA × Fail

Large Text (above 18pt) WCAG AAA × Fail

Any Text WCAG AAA × Fail

# Black Background



## Color Contrast Check

Large Text (above 18pt) WCAG AA ✓ Pass

Any Text WCAG AA ✓ Pass

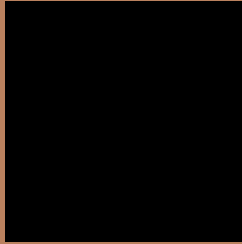
Large Text (above 18pt) WCAG AAA ✓ Pass

Any Text WCAG AAA × Fail

If you want to check with other color combinations, try the [Color Contrast Checker](#).



## Decimal 12222814 Background



This preview shows how black text looks on a background with the Decimal color 12222814.



This preview shows how white text looks on a background with the Decimal color 12222814.

# Color Blindness Simulation

Color vision deficiency is a very complex topic, and I could not describe the different causes any better than Wikipedia does, so if you want to learn more, you should check out their [article about color blindness](#).

## Dichromacy



**Original Color**  
12222814

**Protanopia**  
10063459

**Deuteranopia**  
11241565



**Tritanopia**  
12418181

# Trichromacy



**Original Color**  
12222814

**Protanomaly**  
10848609

**Deuteranomaly**  
11568477

**Tritanomaly**  
12353143

# Monochromacy



**Original Color**  
12222814

**Achromatopsia**  
9342606

**Achromatomaly**  
10389885

# CSS Examples

## Text

The CSS property to change the color of the text to Decimal 12222814 is called "color". The color property can be set on classes, ids or directly on the HTML element.

This example shows how text in the color #BA815E looks like.

```
.text, #text, p{  
  color:#BA815E  
}
```

If you want to add a text shadow in that color use the text-shadow property, you can generate a text shadow directly with our [CSS Text Shadow Generator](#).

Here you see how black text with a 4 pixel #BA815E colored shadow looks like.

```
.shadow{ text-shadow: 4px 4px 2px #BA815E
}
```

## Border

The CSS property to change the border of an element to Decimal 12222814 is called "border". The border property can be set on classes, ids or directly on the HTML element.

This example shows the color as border, it can be applied via the CSS property "border" or "border-color".

```
.border, #border, table{ border:4px solid
#BA815E }
```

If only the border color should be changed use the property `border-color`.

```
.border{ border-color:#BA815E }
```

If you want to add a box shadow in that color use:

Here you see how a box with a 4 pixel #BA815E colored shadow looks like.

```
.boxshadow{ -moz-box-shadow:4px 4px 4px  
4px #BA815E; -webkit-box-shadow:4px 4px  
4px 4px #BA815E; box-shadow:4px 4px 4px  
4px #BA815E }
```

# Background

The CSS property to change the background color of an element to Decimal 12222814 is called "background". The background property can be set on classes, ids or directly on the HTML element.

```
.background, #background, body{  
background:#BA815E }
```

If only the background color should be changed can be used:

```
.background{ background-color:#BA815E }
```

This example shows the color as background, it is applied via the CSS property "background".

To optimize and compress your CSS code, you can use our [online CSS compressor and optimizer](#) based on csstidy. If you want to create a linear or radial gradient as background or border, check our [CSS Gradient Generator](#).



Hey! You found this booklet interesting? Support Converting Colors with the new Membership Option!

The pro membership hides all ads, plus gives you double the colors in the color bucket, and more awesome pro features!

**[Learn more, Memberships starting at \\$2.50/m!](#)**

**Follow me  
on Twitter!**

@ConvertingColor