

Converting Colors

Decimal(12224382)

Have a look what the booklet for
Decimal(12224382) contains.

Decimal(12224382)	3
<i>Conversions</i>	4
<i>Details</i>	6
<i>Harmonies</i>	11
<i>Previews</i>	23
<i>Color Blindness Simulation</i>	26
<i>CSS Examples</i>	29

Color

Decimal(12224382)

Conversions

Conversions Part 1

Format	Color
Hex	BA877E
RGB	186, 135, 126
RGB Percent	73%, 53%, 49%
CMY	0.2706, 0.4706, 0.5059
CMYK	0.00, 0.27, 0.32, 0.27
HSL	9°, 30%, 61%
HSV	9°, 32%, 73%
XYZ	32.6796, 29.2734, 23.6666
YIQ	149.2230, 33.2850, 8.0130

Conversions

Conversions Part 2

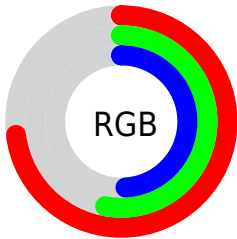
Format	Color
RYB	186, 137, 126
Decimal	12224382
CIELab	61.02, 18.29, 12.55
CIElCh	61, 22.178, 34.450
Yxy	29.2734, 0.3817, 0.3419
Android (android.graphics.Color)	4290414462 (0xFFBA877E)
YUV	149.2230, -11.4489, 32.2534
Hunter-Lab	54.1049, 13.1311, 11.9388

Details

The Decimal color **12224382** is a dark color, and the websafe version is hex **CC9999**. A complement of this color would be **8303034**, and the grayscale version is **9803157**.

A 20% lighter version of the original color is **15973555**, and **8607053** is the 20% darker color. If you saturate the color by 10%, you get **12220267**, and if you desaturate by 10%, it is **12228497**.

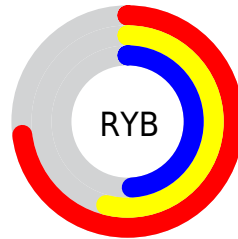
Distribution



Red (73%)

Green (53%)

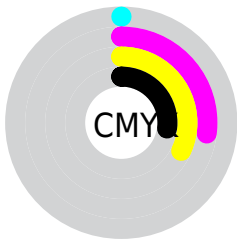
Blue (49%)



Red (73%)

Yellow (54%)

Blue (49%)

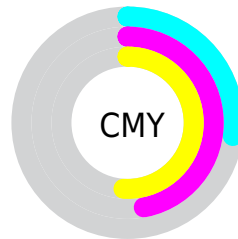


Cyan (0%)

Magenta (27%)

Yellow (32%)

Black (27%)



Cyan (27%)

Magenta (47%)

Yellow (51%)

Brightness & Saturation Gradients

These gradients show how the Decimal color 12224382 changes by changing the brightness by 10 percent. The first figure shows a shift by +10% for each color and the second figure -10%.

Similar to the brightness gradients but the following saturation gradients show a change of the Decimal color 12224382 by changing the saturation by 10% instead.

 12224382

 12224382

16777215

 10382949

 15973555

 8607053

 16767182

 6896950

 16774634

 5252897

 3609099

 2228224

 0

 12224382

 12224382

 12220267

 12228497

 12216153

 12232611

 12212294

 12236470

 12208180

 12240584

 12204065

 12244699

 12199950

 12248814

 12196864

 12252927

 12255231

Harmonies

Analogous

The Analogous color harmony consists of three colors that are next to each other on the color wheel.



12223889



12224382



11570288

Triad

The Triadic color harmony groups three colors that are evenly spaced from another and form a triangle on the color wheel.



12224382



7576962



8361146

Complementary

The Complementary color scheme is a pair of colors which are on the opposite of each other on the color wheel.



12224382



8303034

Split Complementary

Split-complementary colors differ from the complementary color scheme. The scheme consists of three colors, the original color and two neighbors of the complement color.



6724278



12224382



6332054

Square

The Square scheme is like the rectangle color scheme, but the four colors are evenly spaced on the color wheel.



12224382



9017715



5938601



10128820

Rectangle

The Rectangle color scheme consists of four colors that form a rectangle on the color wheel.



12224382



10850668



5938601



7771834

Sweetspot

The Sweet Spot groups the original color and five complimentary colors.



12224382



15916762



12222129



8023660



16448250



8026746

Same Dimension

The Same Dimension uses a secret algorithm to generate beautiful new colors.



12224382



15901332



12232062



6050899



10229504



1836032

Inverse Universe

The Inverse Universe completely reimagines the original color for something new.



8303034



9757938



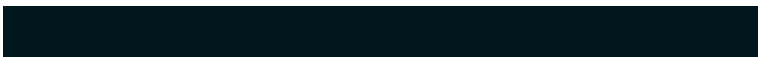
8295354



5462620



33948



6172

Previews

White Background



This preview shows how the Decimal color 12224382 looks on a white background.

Color Contrast Check

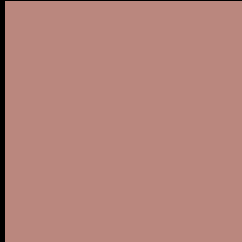
Large Text (above 18pt) WCAG AA ✓ Pass

Any Text WCAG AA × Fail

Large Text (above 18pt) WCAG AAA × Fail

Any Text WCAG AAA × Fail

Black Background



This preview shows how the Decimal color 12224382 looks on a black background.

Color Contrast Check

Large Text (above 18pt) WCAG AA ✓ Pass

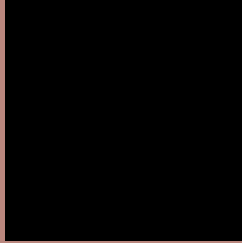
Any Text WCAG AA ✓ Pass

Large Text (above 18pt) WCAG AAA ✓ Pass

Any Text WCAG AAA × Fail

If you want to check with other color combinations, try the [Color Contrast Checker](#).

Decimal 12224382 Background



This preview shows how black text looks on a background with the Decimal color 12224382.



This preview shows how white text looks on a background with the Decimal color 12224382.

Color Blindness Simulation

Color vision deficiency is a very complex topic, and I could not describe the different causes any better than Wikipedia does, so if you want to learn more, you should check out their [article about color blindness](#).


Dichromacy



Original Color
12224382

Protanopia
10130308

Deuteranopia
11177597



Tritanopia
12354959

Trichromacy



Original Color
12224382

Protanomaly
10915714

Deuteranomaly
11570045

Tritanomaly
12289673

Monochromacy



Original Color
12224382

Achromatopsia
9803157

Achromatomaly
10653837

CSS Examples

Text

The CSS property to change the color of the text to Decimal 12224382 is called "color". The color property can be set on classes, ids or directly on the HTML element.

This example shows how text in the color #BA877E looks like.

```
.text, #text, p{  
  color:#BA877E  
}
```

If you want to add a text shadow in that color use the text-shadow property, you can generate a text shadow directly with our [CSS Text Shadow Generator](#).

Here you see how black text with a 4 pixel #BA877E colored shadow looks like.

```
.shadow{ text-shadow: 4px 4px 2px #BA877E
}
```

Border

The CSS property to change the border of an element to Decimal 12224382 is called "border". The border property can be set on classes, ids or directly on the HTML element.

This example shows the color as border, it can be applied via the CSS property "border" or "border-color".

```
.border, #border, table{ border:4px solid
#BA877E }
```

If only the border color should be changed use the property `border-color`.

```
.border{ border-color:#BA877E }
```

If you want to add a box shadow in that color use:

Here you see how a box with a 4 pixel #BA877E colored shadow looks like.

```
.boxshadow{ -moz-box-shadow:4px 4px 4px  
4px #BA877E; -webkit-box-shadow:4px 4px  
4px 4px #BA877E; box-shadow:4px 4px 4px  
4px #BA877E }
```

Background

The CSS property to change the background color of an element to Decimal 12224382 is called "background". The background property can be set on classes, ids or directly on the HTML element.

```
.background, #background, body{  
background:#BA877E }
```

If only the background color should be changed can be used:

```
.background{ background-color:#BA877E }
```

This example shows the color as background, it is applied via the CSS property "background".

To optimize and compress your CSS code, you can use our [online CSS compressor and optimizer](#) based on csstidy. If you want to create a linear or radial gradient as background or border, check our [CSS Gradient Generator](#).

Hey! You found this booklet interesting? Support Converting Colors with the new Membership Option!

The pro membership hides all ads, plus gives you double the colors in the color bucket, and more awesome pro features!

[Learn more, Memberships starting at \\$2.50/m!](#)

**Follow me
on Twitter!**

@ConvertingColor