

Converting Colors

Decimal(12224620)

Have a look what the booklet for
Decimal(12224620) contains.

| | |
|--|----|
| Decimal(12224620) | 3 |
| <i>Conversions</i> | 4 |
| <i>Details</i> | 6 |
| <i>Harmonies</i> | 11 |
| <i>Previews</i> | 23 |
| <i>Color Blindness Simulation</i> | 26 |
| <i>CSS Examples</i> | 29 |

Color

Decimal(12224620)

Conversions

Conversions Part 1

| Format | Color |
|---------------|---------------------------|
| Hex | BA886C |
| RGB | 186, 136, 108 |
| RGB Percent | 73%, 53%, 42% |
| CMY | 0.2706, 0.4667, 0.5765 |
| CMYK | 0.00, 0.27, 0.42, 0.27 |
| HSL | 22°, 36%, 58% |
| HSV | 22°, 42%, 73% |
| XYZ | 31.7606, 29.1301, 18.1361 |
| YIQ | 147.7580, 38.7880, 1.8920 |

Conversions

Conversions Part 2

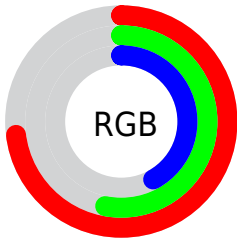
| Format | Color |
|-------------------------------------|---|
| RYB | 186, 152, 108 |
| Decimal | 12224620 |
| CIELab | 60.90, 15.52, 22.54 |
| CIElCh | 61, 27.363, 55.454 |
| Yxy | 29.1301, 0.4019, 0.3686 |
| Android (android.graphics.Color) | 4290414700 (0xFFBA886C) |
| YUV | 147.7580, -19.6007, 33.5382 |
| Hunter-Lab | 53.9723, 10.5888, 17.8577 |

Details

The Decimal color **12224620** is a dark color, and the websafe version is hex **CC9966**. A complement of this color would be **7118522**, and the grayscale version is **9737364**.

A 20% lighter version of the original color is **16039328**, and **8607292** is the 20% darker color. If you saturate the color by 10%, you get **12221529**, and if you desaturate by 10%, it is **12227711**.

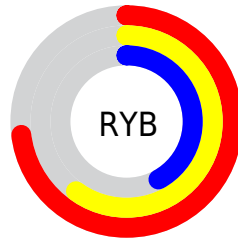
Distribution



Red (73%)

Green (53%)

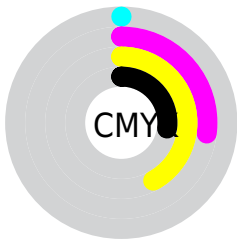
Blue (42%)



Red (73%)

Yellow (60%)

Blue (42%)

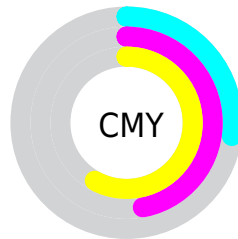


Cyan (0%)

Magenta (27%)

Yellow (42%)

Black (27%)



Cyan (27%)

Magenta (47%)

Yellow (58%)

Brightness & Saturation Gradients

These gradients show how the Decimal color 12224620 changes by changing the brightness by 10 percent. The first figure shows a shift by +10% for each color and the second figure -10%.

Similar to the brightness gradients but the following saturation gradients show a change of the Decimal color 12224620 by changing the saturation by 10% instead.

 12224620

 12224620

16777215

 10383188

 16039328

 8607292

 16767419

 6831910

 16774870

 5122065

 16777203

 3543808

 2031616

 0

 12224620

 12224620

 12221529

 12227711

12218439

12230801

12215348

12233892

12212258

12236982

12209167

12240073

12206848

12243164

12245998

12249087

12252159

Harmonies

Analogous

The Analogous color harmony consists of three colors that are next to each other on the color wheel.



12812927



12224620



10981475

Triad

The Triadic color harmony groups three colors that are evenly spaced from another and form a triangle on the color wheel.



12224620



5742734



9539262

Complementary

The Complementary color scheme is a pair of colors which are on the opposite of each other on the color wheel.



12224620



7118522

Split Complementary

Split-complementary colors differ from the complementary color scheme. The scheme consists of three colors, the original color and two neighbors of the complement color.



7247555



12224620



4563111

Square

The Square scheme is like the rectangle color scheme, but the four colors are evenly spaced on the color wheel.



12224620



7511415



5152186



11437743

Rectangle

The Rectangle color scheme consists of four colors that form a rectangle on the color wheel.



12224620



9934180



5152186



8819137

Sweetspot

The Sweet Spot groups the original color and five complimentary colors.



12224620



15916755



12217503



8023655



16448250



8026746

Same Dimension

The Same Dimension uses a secret algorithm to generate beautiful new colors.



12224620



15902073



12234348



6051411



10237952



1837568

Inverse Universe

The Inverse Universe completely reimagines the original color for something new.



7118522



7981042



7108794



5462364



25756



4636

Previews

White Background



This preview shows how the Decimal color 12224620 looks on a white background.

Color Contrast Check

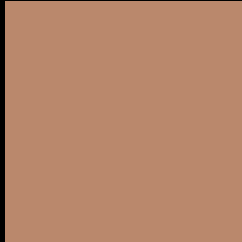
Large Text (above 18pt) WCAG AA ✓ Pass

Any Text WCAG AA × Fail

Large Text (above 18pt) WCAG AAA × Fail

Any Text WCAG AAA × Fail

Black Background



This preview shows how the Decimal color 12224620 looks on a black background.

Color Contrast Check

Large Text (above 18pt) WCAG AA ✓ Pass

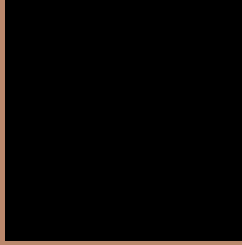
Any Text WCAG AA ✓ Pass

Large Text (above 18pt) WCAG AAA ✓ Pass

Any Text WCAG AAA × Fail

If you want to check with other color combinations, try the [Color Contrast Checker](#).

Decimal 12224620 Background



This preview shows how black text looks on a background with the Decimal color 12224620.



This preview shows how white text looks on a background with the Decimal color 12224620.

Color Blindness Simulation

Color vision deficiency is a very complex topic, and I could not describe the different causes any better than Wikipedia does, so if you want to learn more, you should check out their [article about color blindness](#).


Dichromacy



Original Color
12224620

Protanopia
10326897

Deuteranopia
11439467



Tritanopia
12419981

Trichromacy



Original Color
12224620

Protanomaly
11046767

Deuteranomaly
11701099

Tritanomaly
12354945

Monochromacy



Original Color
12224620

Achromatopsia
9737364

Achromatomaly
10653829

CSS Examples

Text

The CSS property to change the color of the text to Decimal 12224620 is called "color". The color property can be set on classes, ids or directly on the HTML element.

This example shows how text in the color #BA886C looks like.

```
.text, #text, p{  
    color:#BA886C  
}
```

If you want to add a text shadow in that color use the text-shadow property, you can generate a text shadow directly with our [CSS Text Shadow Generator](#).

Here you see how black text with a 4 pixel #BA886C colored shadow looks like.

```
.shadow{ text-shadow: 4px 4px 2px #BA886C
}
```

Border

The CSS property to change the border of an element to Decimal 12224620 is called "border". The border property can be set on classes, ids or directly on the HTML element.

This example shows the color as border, it can be applied via the CSS property "border" or "border-color".

```
.border, #border, table{ border:4px solid
#BA886C }
```

If only the border color should be changed use the property `border-color`.

```
.border{ border-color:#BA886C }
```

If you want to add a box shadow in that color use:

Here you see how a box with a 4 pixel #BA886C colored shadow looks like.

```
.boxshadow{ -moz-box-shadow:4px 4px 4px  
4px #BA886C; -webkit-box-shadow:4px 4px  
4px 4px #BA886C; box-shadow:4px 4px 4px  
4px #BA886C }
```

Background

The CSS property to change the background color of an element to Decimal 12224620 is called "background". The background property can be set on classes, ids or directly on the HTML element.

```
.background, #background, body{  
background:#BA886C }
```

If only the background color should be changed can be used:

```
.background{ background-color:#BA886C }
```

This example shows the color as background, it is applied via the CSS property "background".

To optimize and compress your CSS code, you can use our [online CSS compressor and optimizer](#) based on csstidy. If you want to create a linear or radial gradient as background or border, check our [CSS Gradient Generator](#).

Hey! You found this booklet interesting? Support Converting Colors with the new Membership Option!

The pro membership hides all ads, plus gives you double the colors in the color bucket, and more awesome pro features!

[Learn more, Memberships starting at \\$2.50/m!](#)

**Follow me
on Twitter!**

@ConvertingColor