

# Converting Colors

Decimal(12227437)

Have a look what the booklet for  
Decimal(12227437) contains.

<b>Decimal(12227437)</b> .....	3
<i><b>Conversions</b></i> .....	4
<i><b>Details</b></i> .....	6
<i><b>Harmonies</b></i> .....	11
<i><b>Previews</b></i> .....	23
<i><b>Color Blindness Simulation</b></i> .....	26
<i><b>CSS Examples</b></i> .....	29

# **Color**

**Decimal(12227437)**

# Conversions

## Conversions Part 1

Format	Color
Hex	BA936D
RGB	186, 147, 109
RGB Percent	73%, 58%, 43%
CMY	0.2706, 0.4235, 0.5725
CMYK	0.00, 0.21, 0.41, 0.27
HSL	30°, 36%, 58%
HSV	30°, 41%, 73%
XYZ	33.4437, 32.4107, 18.9612
YIQ	154.3290, 35.4420, -3.5500

# Conversions

## Conversions Part 2

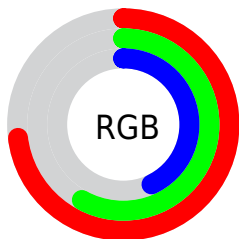
Format	Color
R <sub>Y</sub> B	186, 184, 109
Decimal	12227437
CIE Lab	63.68, 9.54, 25.69
CIE LCh	64, 27.408, 69.635
Yxy	32.4107, 0.3943, 0.3821
Android (android.graphics.Color)	4290417517 (0xFFBA936D)
YUV	154.3290, -22.3472, 27.7755
Hunter-Lab	56.9304, 5.2317, 20.1042

# Details

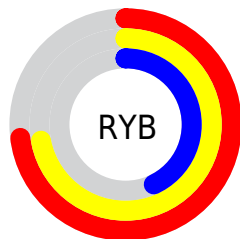
The Decimal color **12227437** is a dark color, and the websafe version is hex **CC9966**. A complement of this color would be **7181498**, and the grayscale version is **10197915**.

A 20% lighter version of the original color is **15976865**, and **8609853** is the 20% darker color. If you saturate the color by 10%, you get **12225114**, and if you desaturate by 10%, it is **12229760**.

# Distribution



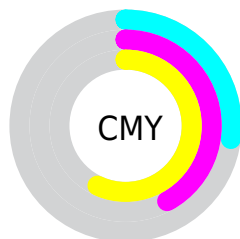
- Red (73%)
- Green (58%)
- Blue (43%)



- Red (73%)
- Yellow (72%)
- Blue (43%)



- Cyan (0%)
- Magenta (21%)
- Yellow (41%)
- Black (27%)



- Cyan (27%)
- Magenta (42%)
- Yellow (57%)

# Brightness & Saturation Gradients

These gradients show how the Decimal color 12227437 changes by changing the brightness by 10 percent. The first figure shows a shift by +10% for each color and the second figure -10%.

Similar to the brightness gradients but the following saturation gradients show a change of the Decimal color 12227437 by changing the saturation by 10% instead.



 12227437

 12227437

16777215

 10385748

 15976865

 8609853

 16770492

 6900006

 16777176

 5190161

 16777204

 3611904

 2032896

 0

 12227437

 12227437

 12225114

 12229760

12222536

12232338

12220213

12234661

12217635

12237239

12215312

12239562

12213248

12242141

12244463

12246783

12249343

# Harmonies

## Analogous

The Analogous color harmony consists of three colors that are next to each other on the color wheel.



13143164



12227437



10787690

# Triad

The Triadic color harmony groups three colors that are evenly spaced from another and form a triangle on the color wheel.



12227437



5548194



11047360

# Complementary

The Complementary color scheme is a pair of colors which are on the opposite of each other on the color wheel.



12227437



7181498

# Split Complementary

Split-complementary colors differ from the complementary color scheme. The scheme consists of three colors, the original color and two neighbors of the complement color.



8821450



12227437



5088953

# Square

The Square scheme is like the rectangle color scheme, but the four colors are evenly spaced on the color wheel.



12227437



7120520



6529479



12618412

# Rectangle

The Rectangle color scheme consists of four colors that form a rectangle on the color wheel.



12227437



9609327



6529479



10327237



# Sweetspot

The Sweet Spot groups the original color and five complimentary colors.



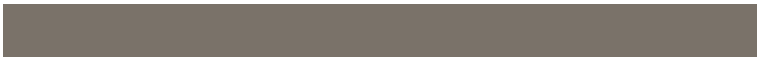
12227437



15918293



12217749



8024681



16448250



8026746



# Same Dimension

The Same Dimension uses a secret algorithm to generate beautiful new colors.



12227437



15906169



12237165



6051667



10243328



1838592



# Inverse Universe

The Inverse Universe completely reimagines the original color for something new.



7181498



7976690



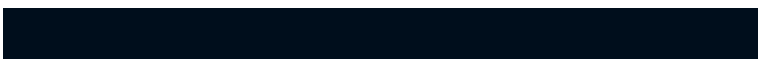
7171770



5461852



20380

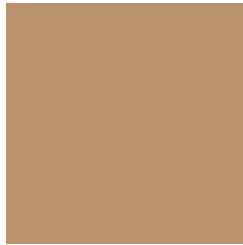


3612



# Previews

## White Background



This preview shows how the Decimal color 12227437 looks on a white background.

## Color Contrast Check

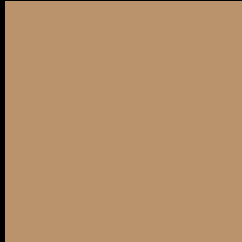
Large Text (above 18pt) WCAG AA × Fail

Any Text WCAG AA × Fail

Large Text (above 18pt) WCAG AAA × Fail

Any Text WCAG AAA × Fail

# Black Background



This preview shows how the Decimal color 12227437 looks on a black background.

## Color Contrast Check

Large Text (above 18pt) WCAG AA ✓ Pass

Any Text WCAG AA ✓ Pass

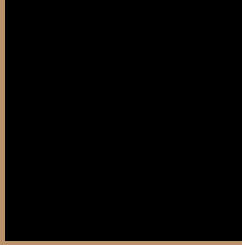
Large Text (above 18pt) WCAG AAA ✓ Pass

Any Text WCAG AAA ✓ Pass

If you want to check with other color combinations, try the [Color Contrast Checker](#).



## Decimal 12227437 Background



This preview shows how black text looks on a background with the Decimal color 12227437.



This preview shows how white text looks on a background with the Decimal color 12227437.

# Color Blindness Simulation

Color vision deficiency is a very complex topic, and I could not describe the different causes any better than Wikipedia does, so if you want to learn more, you should check out their [article about color blindness](#).

## Dichromacy



**Original Color**  
12227437

**Protanopia**  
10918512

**Deuteranopia**  
12096621



**Tritanopia**  
12488088

# Trichromacy



**Original Color**  
12227437

**Protanomaly**  
11376495

**Deuteranomaly**  
12162157

**Tritanomaly**  
12423048

# Monochromacy



**Original Color**  
12227437

**Achromatopsia**  
10132122

**Achromatomaly**  
10917770

# CSS Examples

## Text

The CSS property to change the color of the text to Decimal 12227437 is called "color". The color property can be set on classes, ids or directly on the HTML element.

This example shows how text in the color #BA936D looks like.

```
.text, #text, p{  
    color:#BA936D  
}
```

If you want to add a text shadow in that color use the text-shadow property, you can generate a text shadow directly with our [CSS Text Shadow Generator](#).

Here you see how black text with a 4 pixel #BA936D colored shadow looks like.

```
.shadow{ text-shadow: 4px 4px 2px #BA936D
}
```

## Border

The CSS property to change the border of an element to Decimal 12227437 is called "border". The border property can be set on classes, ids or directly on the HTML element.

This example shows the color as border, it can be applied via the CSS property "border" or "border-color".

```
.border, #border, table{ border:4px solid
#BA936D }
```

If only the border color should be changed use the property `border-color`.

```
.border{ border-color:#BA936D }
```

If you want to add a box shadow in that color use:

Here you see how a box with a 4 pixel #BA936D colored shadow looks like.

```
.boxshadow{ -moz-box-shadow:4px 4px 4px  
4px #BA936D; -webkit-box-shadow:4px 4px  
4px 4px #BA936D; box-shadow:4px 4px 4px  
4px #BA936D }
```

# Background

The CSS property to change the background color of an element to Decimal 12227437 is called "background". The background property can be set on classes, ids or directly on the HTML element.

```
.background, #background, body{  
background:#BA936D }
```

If only the background color should be changed can be used:

```
.background{ background-color:#BA936D }
```

This example shows the color as background, it is applied via the CSS property "background".

To optimize and compress your CSS code, you can use our [online CSS compressor and optimizer](#) based on csstidy. If you want to create a linear or radial gradient as background or border, check our [CSS Gradient Generator](#).



Hey! You found this booklet interesting? Support Converting Colors with the new Membership Option!

The pro membership hides all ads, plus gives you double the colors in the color bucket, and more awesome pro features!

**[Learn more, Memberships starting at \\$2.50/m!](#)**

**Follow me  
on Twitter!**

@ConvertingColor