

# Converting Colors

Decimal(12227989)

Have a look what the booklet for  
Decimal(12227989) contains.

|  |    |
|--|----|
| <b>Decimal(12227989)</b> .....                 | 3  |
| <i><b>Conversions</b></i> .....                | 4  |
| <i><b>Details</b></i> .....                    | 6  |
| <i><b>Harmonies</b></i> .....                  | 11 |
| <i><b>Previews</b></i> .....                   | 23 |
| <i><b>Color Blindness Simulation</b></i> ..... | 26 |
| <i><b>CSS Examples</b></i> .....               | 29 |

# **Color**

**Decimal(12227989)**

# Conversions

## Conversions Part 1

| Format      | Color                     |
|-------------|---------------------------|
| Hex         | BA9595                    |
| RGB         | 186, 149, 149             |
| RGB Percent | 73%, 58%, 58%             |
| CMY         | 0.2706, 0.4157, 0.4157    |
| CMYK        | 0.00, 0.20, 0.20, 0.27    |
| HSL         | 0°, 21%, 66%              |
| HSV         | 0°, 20%, 73%              |
| XYZ         | 36.4220, 34.1039, 33.0968 |
| YIQ         | 160.0630, 22.0520, 7.8440 |

# Conversions

## Conversions Part 2

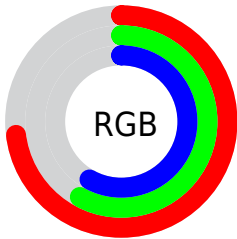
| Format                              | Color  |
|-------------------------------------|--|
| <a href="#">RYB</a>                 | <a href="#">186, 149, 149</a>                  |
| Decimal                             | <a href="#">12227989</a>                       |
| CIELab                              | <a href="#">65.04, 13.84, 5.26</a>             |
| CIELCh                              | <a href="#">65, 14.805, 20.805</a>             |
| Yxy                                 | <a href="#">34.1039, 0.3515,<br/>0.3291</a>    |
| Android<br>(android.graphics.Color) | <a href="#">4290418069<br/>(0xFFBA9595)</a>    |
| YUV                                 | <a href="#">160.0630, -5.4541,<br/>22.7467</a> |
| Hunter-Lab                          | <a href="#">58.3986, 9.1292,<br/>7.2769</a>    |

# Details

The Decimal color **12227989** is a light color, and the websafe version is hex **CC9999**. A complement of this color would be **9812666**, and the grayscale version is **10526880**.

A 20% lighter version of the original color is **15977419**, and **8675938** is the 20% darker color. If you saturate the color by 10%, you get **12223106**, and if you desaturate by 10%, it is **12232872**.

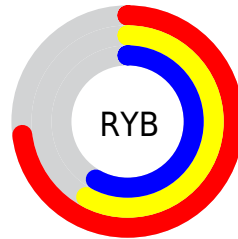
# Distribution



Red (73%)

Green (58%)

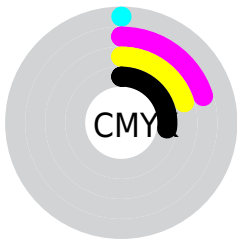
Blue (58%)



Red (73%)

Yellow (58%)

Blue (58%)

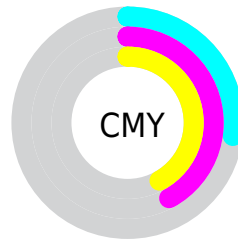


Cyan (0%)

Magenta (20%)

Yellow (20%)

Black (27%)



Cyan (27%)

Magenta (42%)

Yellow (42%)

# Brightness & Saturation Gradients

These gradients show how the Decimal color 12227989 changes by changing the brightness by 10 percent. The first figure shows a shift by +10% for each color and the second figure -10%.

Similar to the brightness gradients but the following saturation gradients show a change of the Decimal color 12227989 by changing the saturation by 10% instead.



 12227989

 12227989

16777215

 10451835


 15977419

 8675938

 16771047

 7031371

 5387060

 3808799

 2426630

 0

 12227989

 12227989

 12223106

 12232872

 12218480

 12237498

 12213597

 12242381

 12208971

 12247007

 12204088

 12251890

 12199205

 12255231

 12194579

 12189696

# Harmonies

## Analogous

The Analogous color harmony consists of three colors that are next to each other on the color wheel.



11965858



12227989



11966346

# Triad

The Triadic color harmony groups three colors that are evenly spaced from another and form a triangle on the color wheel.



12227989



9413517



9085112

# Complementary

The Complementary color scheme is a pair of colors which are on the opposite of each other on the color wheel.



12227989



9812666

# Split Complementary

Split-complementary colors differ from the complementary color scheme. The scheme consists of three colors, the original color and two neighbors of the complement color.



8299698



12227989



8562073

# Square

The Square scheme is like the rectangle color scheme, but the four colors are evenly spaced on the color wheel.



12227989



10395781



8103335



10198198

# Rectangle

The Rectangle color scheme consists of four colors that form a rectangle on the color wheel.



12227989



11573893



8103335



8757942

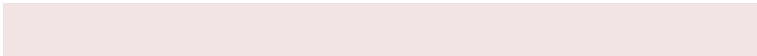


# Sweetspot

The Sweet Spot groups the original color and five complimentary colors.



12227989



15918308



12228026



8024690



16448250



8026746



# Same Dimension

The Same Dimension uses a secret algorithm to generate beautiful new colors.



12227989



15907000



12232853



6050643



10223616



1835008



# Inverse Universe

The Inverse Universe completely reimagines the original color for something new.



9812666



12120818



9808058



5463132



40092

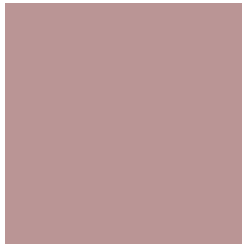


7196



# Previews

## White Background



This preview shows how the Decimal color 12227989 looks on a white background.

## Color Contrast Check

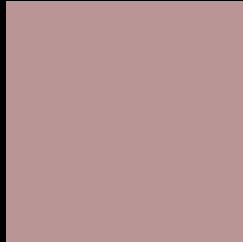
Large Text (above 18pt) WCAG AA × Fail

Any Text WCAG AA × Fail

Large Text (above 18pt) WCAG AAA × Fail

Any Text WCAG AAA × Fail

# Black Background



This preview shows how the Decimal color 12227989 looks on a black background.

## Color Contrast Check

Large Text (above 18pt) WCAG AA ✓ Pass

Any Text WCAG AA ✓ Pass

Large Text (above 18pt) WCAG AAA ✓ Pass

Any Text WCAG AAA ✓ Pass

If you want to check with other color combinations, try the [Color Contrast Checker](#).



## Decimal 12227989 Background



This preview shows how black text looks on a background with the Decimal color 12227989.



This preview shows how white text looks on a background with the Decimal color 12227989.

# Color Blindness Simulation

Color vision deficiency is a very complex topic, and I could not describe the different causes any better than Wikipedia does, so if you want to learn more, you should check out their [article about color blindness](#).

## Dichromacy



**Original Color**  
12227989

**Protanopia**  
10657178

**Deuteranopia**  
11639188



**Tritanopia**  
12293023

# Trichromacy



**Original Color**  
12227989

**Protanomaly**  
11246232

**Deuteranomaly**  
11835540

**Tritanomaly**  
12293275

# Monochromacy



**Original Color**  
12227989

**Achromatopsia**  
10526880

**Achromatomaly**  
11115676

# CSS Examples

## Text

The CSS property to change the color of the text to Decimal 12227989 is called "color". The color property can be set on classes, ids or directly on the HTML element.

This example shows how text in the color #BA9595 looks like.

```
.text, #text, p{  
  color:#BA9595  
}
```

If you want to add a text shadow in that color use the text-shadow property, you can generate a text shadow directly with our [CSS Text Shadow Generator](#).

Here you see how black text with a 4 pixel #BA9595 colored shadow looks like.

```
.shadow{ text-shadow: 4px 4px 2px #BA9595
}
```

## Border

The CSS property to change the border of an element to Decimal 12227989 is called "border". The border property can be set on classes, ids or directly on the HTML element.

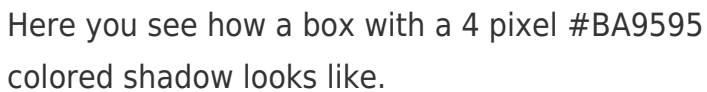
This example shows the color as border, it can be applied via the CSS property "border" or "border-color".

```
.border, #border, table{ border:4px solid
#BA9595 }
```

If only the border color should be changed use the property `border-color`.

```
.border{ border-color:#BA9595 }
```

If you want to add a box shadow in that color use:



Here you see how a box with a 4 pixel #BA9595 colored shadow looks like.

```
.boxshadow{ -moz-box-shadow:4px 4px 4px  
4px #BA9595; -webkit-box-shadow:4px 4px  
4px 4px #BA9595; box-shadow:4px 4px 4px  
4px #BA9595 }
```

# Background

The CSS property to change the background color of an element to Decimal 12227989 is called "background". The background property can be set on classes, ids or directly on the HTML element.

```
.background, #background, body{  
background:#BA9595 }
```

If only the background color should be changed can be used:

```
.background{ background-color:#BA9595 }
```

This example shows the color as background, it is applied via the CSS property "background".

To optimize and compress your CSS code, you can use our [online CSS compressor and optimizer](#) based on csstidy. If you want to create a linear or radial gradient as background or border, check our [CSS Gradient Generator](#).



Hey! You found this booklet interesting? Support Converting Colors with the new Membership Option!

The pro membership hides all ads, plus gives you double the colors in the color bucket, and more awesome pro features!

**[Learn more, Memberships starting at \\$2.50/m!](#)**

**Follow me  
on Twitter!**

@ConvertingColor