

Converting Colors

Decimal(12228222)

Have a look what the booklet for
Decimal(12228222) contains.

Decimal(12228222)	3
<i>Conversions</i>	4
<i>Details</i>	6
<i>Harmonies</i>	11
<i>Previews</i>	23
<i>Color Blindness Simulation</i>	26
<i>CSS Examples</i>	29

Color

Decimal(12228222)

Conversions

Conversions Part 1

Format	Color
Hex	BA967E
RGB	186, 150, 126
RGB Percent	73%, 59%, 49%
CMY	0.2706, 0.4118, 0.5059
CMYK	0.00, 0.19, 0.32, 0.27
HSL	24°, 30%, 61%
HSV	24°, 32%, 73%
XYZ	34.9219, 33.7582, 24.4141
YIQ	158.0280, 29.1600, 0.1680

Conversions

Conversions Part 2

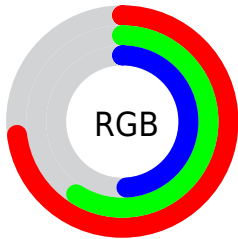
Format	Color
RYB	186, 166, 126
Decimal	12228222
CIELab	64.77, 9.97, 17.76
CIElCh	65, 20.362, 60.688
Yxy	33.7582, 0.3751, 0.3626
Android (android.graphics.Color)	4290418302 (0xFFBA967E)
YUV	158.0280, -15.7898, 24.5314
Hunter-Lab	58.1018, 5.6089, 15.7579

Details

The Decimal color **12228222** is a light color, and the websafe version is hex **CC9999**. A complement of this color would be **8299194**, and the grayscale version is **10395294**.

A 20% lighter version of the original color is **15977651**, and **8676173** is the 20% darker color. If you saturate the color by 10%, you get **12225387**, and if you desaturate by 10%, it is **12231057**.

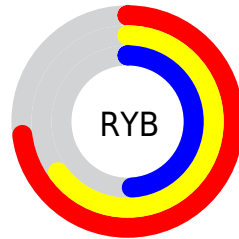
Distribution



Red (73%)

Green (59%)

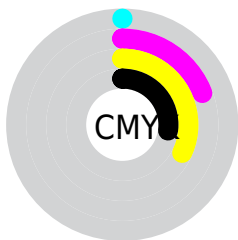
Blue (49%)



Red (73%)

Yellow (65%)

Blue (49%)

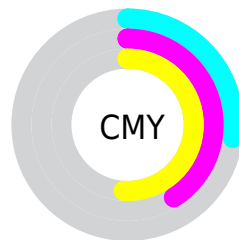


Cyan (0%)

Magenta (19%)

Yellow (32%)

Black (27%)



Cyan (27%)

Magenta (41%)

Yellow (51%)

Brightness & Saturation Gradients

These gradients show how the Decimal color 12228222 changes by changing the brightness by 10 percent. The first figure shows a shift by +10% for each color and the second figure -10%.

Similar to the brightness gradients but the following saturation gradients show a change of the Decimal color 12228222 by changing the saturation by 10% instead.

 12228222

 12228222

16777215

 10386533

 15977651

 8676173

 16771278

 6966070

 16777195

 5256480

 3677962

 2230528

 0

 12228222

 12228222

 12225387

 12231057

 12222553

 12233891

 12219718

 12236726

 12216628

 12239816

 12213793

 12242651

 12210958

 12245486

 12208640

 12248319

 12251135

 12253951

Harmonies

Analogous

The Analogous color harmony consists of three colors that are next to each other on the color wheel.



12751243



12228222



11181177

Triad

The Triadic color harmony groups three colors that are evenly spaced from another and form a triangle on the color wheel.



12228222



7448733



10590396

Complementary

The Complementary color scheme is a pair of colors which are on the opposite of each other on the color wheel.



12228222



8299194

Split Complementary

Split-complementary colors differ from the complementary color scheme. The scheme consists of three colors, the original color and two neighbors of the complement color.



8953793



12228222



6989743

Square

The Square scheme is like the rectangle color scheme, but the four colors are evenly spaced on the color wheel.



12228222



8562315



7578812



11899823

Rectangle

The Rectangle color scheme consists of four colors that form a rectangle on the color wheel.



12228222



10395771



7578812



10066623

Sweetspot

The Sweet Spot groups the original color and five complimentary colors.



12228222



15918298



12222114



8024684



16448250



8026746

Same Dimension

The Same Dimension uses a secret algorithm to generate beautiful new colors.



12228222



15907476



12235902



6051411



10239488



1837824

Inverse Universe

The Inverse Universe completely reimagines the original color for something new.



8299194



9751794



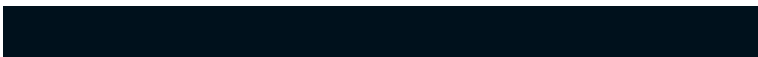
8291514



5462108



23964



4380

Previews

White Background



This preview shows how the Decimal color 12228222 looks on a white background.

Color Contrast Check

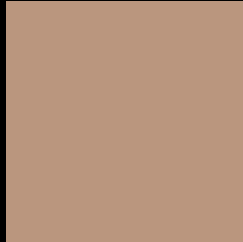
Large Text (above 18pt) WCAG AA × Fail

Any Text WCAG AA × Fail

Large Text (above 18pt) WCAG AAA × Fail

Any Text WCAG AAA × Fail

Black Background



This preview shows how the Decimal color 12228222 looks on a black background.

Color Contrast Check

Large Text (above 18pt) WCAG AA ✓ Pass

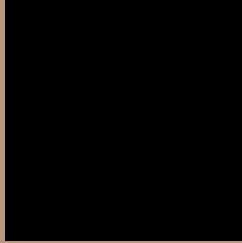
Any Text WCAG AA ✓ Pass

Large Text (above 18pt) WCAG AAA ✓ Pass

Any Text WCAG AAA ✓ Pass

If you want to check with other color combinations, try the [Color Contrast Checker](#).

Decimal 12228222 Background



This preview shows how black text looks on a background with the Decimal color 12228222.



This preview shows how white text looks on a background with the Decimal color 12228222.

Color Blindness Simulation

Color vision deficiency is a very complex topic, and I could not describe the different causes any better than Wikipedia does, so if you want to learn more, you should check out their [article about color blindness](#).


Dichromacy



Original Color
12228222

Protanopia
10919297

Deuteranopia
12031870



Tritanopia
12423837

Trichromacy



Original Color
12228222

Protanomaly
11377280

Deuteranomaly
12097406

Tritanomaly
12358546

Monochromacy



Original Color
12228222

Achromatopsia
10395294

Achromatomaly
11049874

CSS Examples

Text

The CSS property to change the color of the text to Decimal 12228222 is called "color". The color property can be set on classes, ids or directly on the HTML element.

This example shows how text in the color #BA967E looks like.

```
.text, #text, p{  
  color:#BA967E  
}
```

If you want to add a text shadow in that color use the text-shadow property, you can generate a text shadow directly with our [CSS Text Shadow Generator](#).

Here you see how black text with a 4 pixel #BA967E colored shadow looks like.

```
.shadow{ text-shadow: 4px 4px 2px #BA967E
}
```

Border

The CSS property to change the border of an element to Decimal 12228222 is called "border". The border property can be set on classes, ids or directly on the HTML element.

This example shows the color as border, it can be applied via the CSS property "border" or "border-color".

```
.border, #border, table{ border:4px solid
#BA967E }
```

If only the border color should be changed use the property `border-color`.

```
.border{ border-color:#BA967E }
```

If you want to add a box shadow in that color use:

Here you see how a box with a 4 pixel #BA967E colored shadow looks like.

```
.boxshadow{ -moz-box-shadow:4px 4px 4px  
4px #BA967E; -webkit-box-shadow:4px 4px  
4px 4px #BA967E; box-shadow:4px 4px 4px  
4px #BA967E }
```

Background

The CSS property to change the background color of an element to Decimal 12228222 is called "background". The background property can be set on classes, ids or directly on the HTML element.

```
.background, #background, body{  
background:#BA967E }
```

If only the background color should be changed can be used:

```
.background{ background-color:#BA967E }
```

This example shows the color as background, it is applied via the CSS property "background".

To optimize and compress your CSS code, you can use our [online CSS compressor and optimizer](#) based on csstidy. If you want to create a linear or radial gradient as background or border, check our [CSS Gradient Generator](#).

Hey! You found this booklet interesting? Support Converting Colors with the new Membership Option!

The pro membership hides all ads, plus gives you double the colors in the color bucket, and more awesome pro features!

[Learn more, Memberships starting at \\$2.50/m!](#)

**Follow me
on Twitter!**

@ConvertingColor