

Converting Colors

Decimal(12228493)

Have a look what the booklet for
Decimal(12228493) contains.

Decimal(12228493)	3
<i>Conversions</i>	4
<i>Details</i>	6
<i>Harmonies</i>	11
<i>Previews</i>	23
<i>Color Blindness Simulation</i>	26
<i>CSS Examples</i>	29

Color

Decimal(12228493)

Conversions

Conversions Part 1

Format	Color
Hex	BA978D
RGB	186, 151, 141
RGB Percent	73%, 59%, 55%
CMY	0.2706, 0.4078, 0.4471
CMYK	0.00, 0.19, 0.24, 0.27
HSL	13°, 25%, 64%
HSV	13°, 24%, 73%
XYZ	36.1240, 34.4954, 29.9536
YIQ	160.3250, 24.0700, 4.3100

Conversions

Conversions Part 2

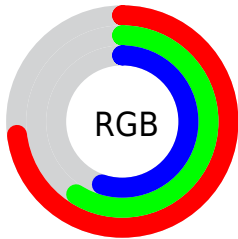
Format	Color
RYB	186, 154, 141
Decimal	12228493
CIELab	65.35, 11.52, 10.19
CIELCh	65, 15.377, 41.508
Yxy	34.4954, 0.3592, 0.3430
Android (android.graphics.Color)	4290418573 (0xFFBA978D)
YUV	160.3250, -9.5272, 22.5170
Hunter-Lab	58.7328, 7.0053, 10.8751

Details

The Decimal color **12228493** is a light color, and the websafe version is hex **CC9999**. A complement of this color would be **9285818**, and the grayscale version is **10526880**.

A 20% lighter version of the original color is **15977923**, and **8676443** is the 20% darker color. If you saturate the color by 10%, you get **12224890**, and if you desaturate by 10%, it is **12232096**.

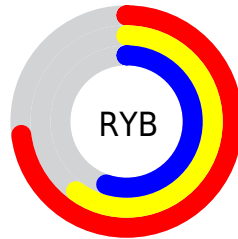
Distribution



Red (73%)

Green (59%)

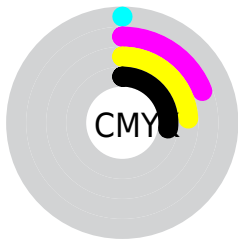
Blue (55%)



Red (73%)

Yellow (60%)

Blue (55%)

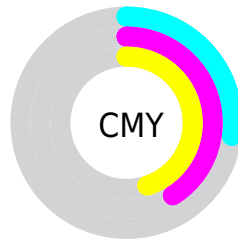


Cyan (0%)

Magenta (19%)

Yellow (24%)

Black (27%)



Cyan (27%)

Magenta (41%)

Yellow (45%)

Brightness & Saturation Gradients

These gradients show how the Decimal color 12228493 changes by changing the brightness by 10 percent. The first figure shows a shift by +10% for each color and the second figure -10%.

Similar to the brightness gradients but the following saturation gradients show a change of the Decimal color 12228493 by changing the saturation by 10% instead.


 12228493

 12228493

16777215

 10452339

 15977923


 8676443

 16771551

 6966339

 16777211

 5322029

 3809305

 2427392

 0

 12228493

 12228493

 12224890

 12232096

 12221032

 12235954

 12217429

 12239557

 12213571

 12243415

 12209968

 12247018

 12206109

 12250877

 12202507

 12254463

 12200192

 12255231

Harmonies

Analogous

The Analogous color harmony consists of three colors that are next to each other on the color wheel.



12359066



12228493



11705221

Triad

The Triadic color harmony groups three colors that are evenly spaced from another and form a triangle on the color wheel.



12228493



8824469



9871033

Complementary

The Complementary color scheme is a pair of colors which are on the opposite of each other on the color wheel.



12228493



9285818

Split Complementary

Split-complementary colors differ from the complementary color scheme. The scheme consists of three colors, the original color and two neighbors of the complement color.



8823480



12228493



8169380

Square

The Square scheme is like the rectangle color scheme, but the four colors are evenly spaced on the color wheel.



12228493



9741194



8169136



11049395

Rectangle

The Rectangle color scheme consists of four colors that form a rectangle on the color wheel.



12228493



11116163



8169136



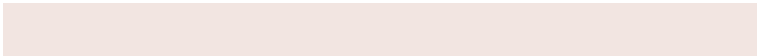
9478330

Sweetspot

The Sweet Spot groups the original color and five complimentary colors.



12228493



15918561



12225968



8024945



16448250



8026746

Same Dimension

The Same Dimension uses a secret algorithm to generate beautiful new colors.



12228493



15908012



12234125



6051155



10232576



1836544

Inverse Universe

The Inverse Universe completely reimagines the original color for something new.



9285818



11330546



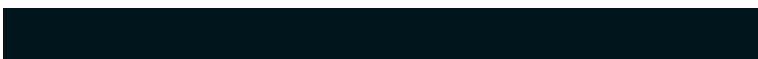
9280186



5462620



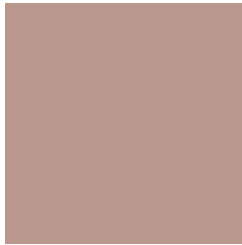
31132



5660

Previews

White Background



This preview shows how the Decimal color 12228493 looks on a white background.

Color Contrast Check

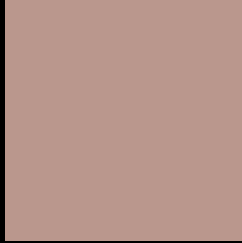
Large Text (above 18pt) WCAG AA × Fail

Any Text WCAG AA × Fail

Large Text (above 18pt) WCAG AAA × Fail

Any Text WCAG AAA × Fail

Black Background



This preview shows how the Decimal color 12228493 looks on a black background.

Color Contrast Check

Large Text (above 18pt) WCAG AA ✓ Pass

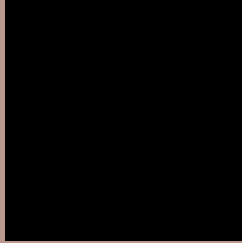
Any Text WCAG AA ✓ Pass

Large Text (above 18pt) WCAG AAA ✓ Pass

Any Text WCAG AAA ✓ Pass

If you want to check with other color combinations, try the [Color Contrast Checker](#).

Decimal 12228493 Background



This preview shows how black text looks on a background with the Decimal color 12228493.



This preview shows how white text looks on a background with the Decimal color 12228493.

Color Blindness Simulation

Color vision deficiency is a very complex topic, and I could not describe the different causes any better than Wikipedia does, so if you want to learn more, you should check out their [article about color blindness](#).


Dichromacy



Original Color
12228493

Protanopia
10854033

Deuteranopia
11901325



Tritanopia
12358816

Trichromacy



Original Color
12228493

Protanomaly
11377552

Deuteranomaly
12032141

Tritanomaly
12293529

Monochromacy



Original Color
12228493

Achromatopsia
10526880

Achromatomaly
11115929

CSS Examples

Text

The CSS property to change the color of the text to Decimal 12228493 is called "color". The color property can be set on classes, ids or directly on the HTML element.

This example shows how text in the color #BA978D looks like.

```
.text, #text, p{  
    color:#BA978D  
}
```

If you want to add a text shadow in that color use the text-shadow property, you can generate a text shadow directly with our [CSS Text Shadow Generator](#).

Here you see how black text with a 4 pixel #BA978D colored shadow looks like.

```
.shadow{ text-shadow: 4px 4px 2px #BA978D
}
```

Border

The CSS property to change the border of an element to Decimal 12228493 is called "border". The border property can be set on classes, ids or directly on the HTML element.

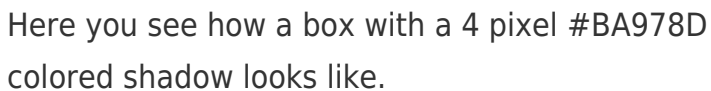
This example shows the color as border, it can be applied via the CSS property "border" or "border-color".

```
.border, #border, table{ border:4px solid
#BA978D }
```

If only the border color should be changed use the property `border-color`.

```
.border{ border-color:#BA978D }
```

If you want to add a box shadow in that color use:



Here you see how a box with a 4 pixel #BA978D colored shadow looks like.

```
.boxshadow{ -moz-box-shadow:4px 4px 4px  
4px #BA978D; -webkit-box-shadow:4px 4px  
4px 4px #BA978D; box-shadow:4px 4px 4px  
4px #BA978D }
```

Background

The CSS property to change the background color of an element to Decimal 12228493 is called "background". The background property can be set on classes, ids or directly on the HTML element.

```
.background, #background, body{  
background:#BA978D }
```

If only the background color should be changed can be used:

```
.background{ background-color:#BA978D }
```

This example shows the color as background, it is applied via the CSS property "background".

To optimize and compress your CSS code, you can use our [online CSS compressor and optimizer](#) based on csstidy. If you want to create a linear or radial gradient as background or border, check our [CSS Gradient Generator](#).

Hey! You found this booklet interesting? Support Converting Colors with the new Membership Option!

The pro membership hides all ads, plus gives you double the colors in the color bucket, and more awesome pro features!

[Learn more, Memberships starting at \\$2.50/m!](#)

**Follow me
on Twitter!**

@ConvertingColor