

# Converting Colors

Decimal(12230551)

Have a look what the booklet for  
Decimal(12230551) contains.

<b>Decimal(12230551)</b> .....	3
<i><b>Conversions</b></i> .....	4
<i><b>Details</b></i> .....	6
<i><b>Harmonies</b></i> .....	11
<i><b>Previews</b></i> .....	23
<i><b>Color Blindness Simulation</b></i> .....	26
<i><b>CSS Examples</b></i> .....	29

# **Color**

**Decimal(12230551)**

# Conversions

## Conversions Part 1

Format	Color
Hex	BA9F97
RGB	186, 159, 151
RGB Percent	73%, 62%, 59%
CMY	0.2706, 0.3765, 0.4078
CMYK	0.00, 0.15, 0.19, 0.27
HSL	14°, 20%, 66%
HSV	14°, 19%, 73%
XYZ	38.2338, 37.4697, 34.4954
YIQ	166.1610, 18.6600, 3.2360

# Conversions

## Conversions Part 2

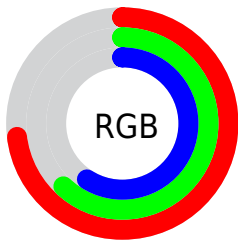
Format	Color
<b>RYB</b>	186, 161, 151
Decimal	12230551
CIELab	67.63, 8.63, 7.84
CIELCh	68, 11.663, 42.266
Yxy	37.4697, 0.3470, 0.3400
Android (android.graphics.Color)	4290420631 (0xFFBA9F97)
YUV	166.1610, -7.4744, 17.3988
Hunter-Lab	61.2125, 4.3703, 9.4368

# Details

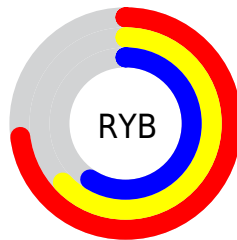
The Decimal color **12230551** is a light color, and the websafe version is hex **CC9999**. A complement of this color would be **9941690**, and the grayscale version is **10921638**.

A 20% lighter version of the original color is **15914701**, and **8678500** is the 20% darker color. If you saturate the color by 10%, you get **12226948**, and if you desaturate by 10%, it is **12234154**.

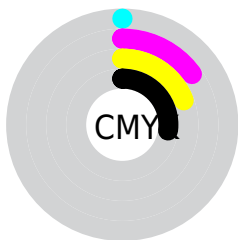
# Distribution



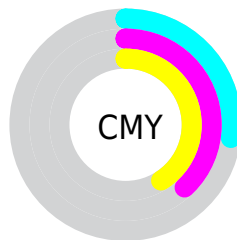
- Red (73%)
- Green (62%)
- Blue (59%)



- Red (73%)
- Yellow (63%)
- Blue (59%)



- Cyan (0%)
- Magenta (15%)
- Yellow (19%)
- Black (27%)



- Cyan (27%)
- Magenta (38%)
- Yellow (41%)

# Brightness & Saturation Gradients

These gradients show how the Decimal color 12230551 changes by changing the brightness by 10 percent. The first figure shows a shift by +10% for each color and the second figure -10%.

Similar to the brightness gradients but the following saturation gradients show a change of the Decimal color 12230551 by changing the saturation by 10% instead.



 12230551

 12230551

16777215

 10454397

 15914701

 8678500

 16773865

 7033676

 5389366

 3876384

 2429449

 0

 12230551

 12230551

 12226948

 12234154

 12223090

 12238012

 12219487

 12241615

 12215885

 12245217

 12212026

 12249076

 12208423

 12252671

 12204821

 12255231

 12200962

 12200704

# Harmonies

## Analogous

The Analogous color harmony consists of three colors that are next to each other on the color wheel.



12295841



12230551



11772561

# Triad

The Triadic color harmony groups three colors that are evenly spaced from another and form a triangle on the color wheel.



12230551



9611934



10462393

# Complementary

The Complementary color scheme is a pair of colors which are on the opposite of each other on the color wheel.



12230551



9941690

# Split Complementary

Split-complementary colors differ from the complementary color scheme. The scheme consists of three colors, the original color and two neighbors of the complement color.



9676984



12230551



9153449

# Square

The Square scheme is like the rectangle color scheme, but the four colors are evenly spaced on the color wheel.



12230551



10332309



9153202



11313588

# Rectangle

The Rectangle color scheme consists of four colors that form a rectangle on the color wheel.



12230551



11379856



9153202



10200505

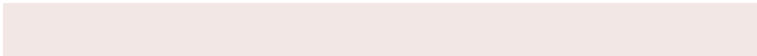


# Sweetspot

The Sweet Spot groups the original color and five complimentary colors.



12230551



15919076



12228530



8025202



16448250



8026746



# Same Dimension

The Same Dimension uses a secret algorithm to generate beautiful new colors.



12230551



15910843



12234903



6051155



10232832



1836544



# Inverse Universe

The Inverse Universe completely reimagines the original color for something new.



9941690



12314354



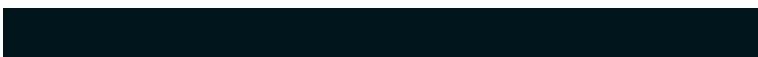
9937338



5462620



30876

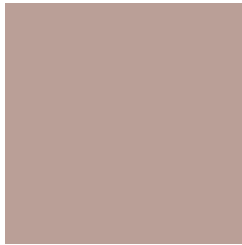


5660



# Previews

## White Background



This preview shows how the Decimal color 12230551 looks on a white background.

## Color Contrast Check

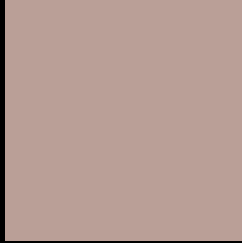
Large Text (above 18pt) WCAG AA × Fail

Any Text WCAG AA × Fail

Large Text (above 18pt) WCAG AAA × Fail

Any Text WCAG AAA × Fail

# Black Background



This preview shows how the Decimal color 12230551 looks on a black background.

## Color Contrast Check

Large Text (above 18pt) WCAG AA ✓ Pass

Any Text WCAG AA ✓ Pass

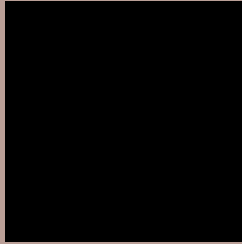
Large Text (above 18pt) WCAG AAA ✓ Pass

Any Text WCAG AAA ✓ Pass

If you want to check with other color combinations, try the [Color Contrast Checker](#).



## Decimal 12230551 Background



This preview shows how black text looks on a background with the Decimal color 12230551.



This preview shows how white text looks on a background with the Decimal color 12230551.

# Color Blindness Simulation

Color vision deficiency is a very complex topic, and I could not describe the different causes any better than Wikipedia does, so if you want to learn more, you should check out their [article about color blindness](#).

## Dichromacy





**Tritanopia**  
12360873

# Trichromacy



**Original Color**  
12230551

**Protanomaly**  
11575961

**Deuteranomaly**  
12230551

**Tritanomaly**  
12295586

# Monochromacy



**Original Color**  
12230551

**Achromatopsia**  
10921638

**Achromatomaly**  
11379617

# CSS Examples

## Text

The CSS property to change the color of the text to Decimal 12230551 is called "color". The color property can be set on classes, ids or directly on the HTML element.

This example shows how text in the color #BA9F97 looks like.

```
.text, #text, p{  
  color:#BA9F97  
}
```

If you want to add a text shadow in that color use the text-shadow property, you can generate a text shadow directly with our [CSS Text Shadow Generator](#).

Here you see how black text with a 4 pixel #BA9F97 colored shadow looks like.

```
.shadow{ text-shadow: 4px 4px 2px #BA9F97
}
```

## Border

The CSS property to change the border of an element to Decimal 12230551 is called "border". The border property can be set on classes, ids or directly on the HTML element.

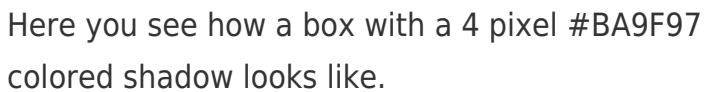
This example shows the color as border, it can be applied via the CSS property "border" or "border-color".

```
.border, #border, table{ border:4px solid
#BA9F97 }
```

If only the border color should be changed use the property `border-color`.

```
.border{ border-color:#BA9F97 }
```

If you want to add a box shadow in that color use:



Here you see how a box with a 4 pixel #BA9F97 colored shadow looks like.

```
.boxshadow{ -moz-box-shadow:4px 4px 4px  
4px #BA9F97; -webkit-box-shadow:4px 4px  
4px 4px #BA9F97; box-shadow:4px 4px 4px  
4px #BA9F97 }
```

# Background

The CSS property to change the background color of an element to Decimal 12230551 is called "background". The background property can be set on classes, ids or directly on the HTML element.

```
.background, #background, body{  
background:#BA9F97 }
```

If only the background color should be changed can be used:

```
.background{ background-color:#BA9F97 }
```

This example shows the color as background, it is applied via the CSS property "background".

To optimize and compress your CSS code, you can use our [online CSS compressor and optimizer](#) based on csstidy. If you want to create a linear or radial gradient as background or border, check our [CSS Gradient Generator](#).



Hey! You found this booklet interesting? Support Converting Colors with the new Membership Option!

The pro membership hides all ads, plus gives you double the colors in the color bucket, and more awesome pro features!

**[Learn more, Memberships starting at \\$2.50/m!](#)**

**Follow me  
on Twitter!**

@ConvertingColor