

Converting Colors

Decimal(12287108)

Have a look what the booklet for
Decimal(12287108) contains.

Decimal(12287108)	3
<i>Conversions</i>	4
<i>Details</i>	6
<i>Harmonies</i>	11
<i>Previews</i>	23
<i>Color Blindness Simulation</i>	26
<i>CSS Examples</i>	29

Color

Decimal(12287108)

Conversions

Conversions Part 1

Format	Color
Hex	BB7C84
RGB	187, 124, 132
RGB Percent	73%, 49%, 52%
CMY	0.2667, 0.5137, 0.4824
CMYK	0.00, 0.34, 0.29, 0.27
HSL	352°, 32%, 61%
HSV	352°, 34%, 73%
XYZ	31.8660, 26.6460, 25.2935
YIQ	143.7490, 34.9800, 15.8440

Conversions

Conversions Part 2

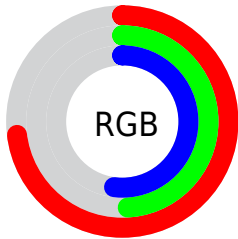
Format	Color
R_{YB}	187, 124, 132
Decimal	12287108
CIE _{Lab}	58.65, 25.60, 5.75
CIE _{LCh}	59, 26.241, 12.665
Yxy	26.6460, 0.3802, 0.3180
Android (android.graphics.Color)	4290477188 (0xFFBB7C84)
YUV	143.7490, -5.7923, 37.9311
Hunter-Lab	51.6198, 19.8573, 7.0820

Details

The Decimal color **12287108** is a dark color, and the websafe version is hex **CC9999**. A complement of this color would be **8174515**, and the grayscale version is **9474192**.

A 20% lighter version of the original color is **16036281**, and **8669779** is the 20% darker color. If you saturate the color by 10%, you get **12282228**, and if you desaturate by 10%, it is **12291988**.

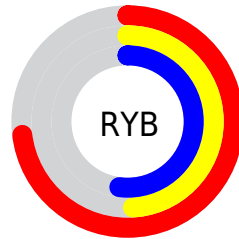
Distribution



Red (73%)

Green (49%)

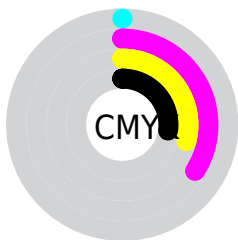
Blue (52%)



Red (73%)

Yellow (49%)

Blue (52%)

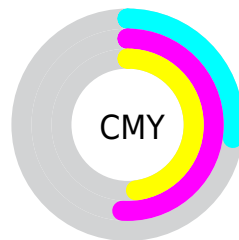


Cyan (0%)

Magenta (34%)

Yellow (29%)

Black (27%)



Cyan (27%)

Magenta (51%)

Yellow (48%)

Brightness & Saturation Gradients

These gradients show how the Decimal color 12287108 changes by changing the brightness by 10 percent. The first figure shows a shift by +10% for each color and the second figure -10%.

Similar to the brightness gradients but the following saturation gradients show a change of the Decimal color 12287108 by changing the saturation by 10% instead.

 12287108

 12287108

16777215

 10445675

 16036281

 8669779

 16764373

 6959932

 16771569

 5250086

 3605777

 2228225

 0

 12287108

 12287108

 12282228

 12291988

 12277603

 12296613

 12272723

 12301493

 12267843

 12306373

 12262962

 12311254

 12258338

 12315878

 12255256

 12320758

 12320767

Harmonies

Analogous

The Analogous color harmony consists of three colors that are next to each other on the color wheel.



11697819



12287108



12025967

Triad

The Triadic color harmony groups three colors that are evenly spaced from another and form a triangle on the color wheel.



12287108



8033643



6067128

Complementary

The Complementary color scheme is a pair of colors which are on the opposite of each other on the color wheel.



12287108



8174515

Split Complementary

Split-complementary colors differ from the complementary color scheme. The scheme consists of three colors, the original color and two neighbors of the complement color.



4561067



12287108



6265215

Square

The Square scheme is like the rectangle color scheme, but the four colors are evenly spaced on the color wheel.



12287108



9670496



4758166



8228026

Rectangle

The Rectangle color scheme consists of four colors that form a rectangle on the color wheel.



12287108



11502693



4758166



5412277

Sweetspot

The Sweet Spot groups the original color and five complimentary colors.



12287108



15915741



11762875



8023150



16448250



8026746

Same Dimension

The Same Dimension uses a secret algorithm to generate beautiful new colors.



12287108



15896990



12292988



6182230



10354708



2031620

Inverse Universe

The Inverse Universe completely reimagines the original color for something new.



12287108



15896990



8168635



6182230



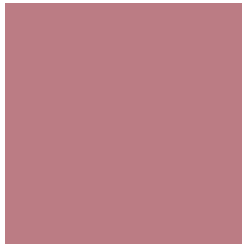
10354708



2031620

Previews

White Background



This preview shows how the Decimal color 12287108 looks on a white background.

Color Contrast Check

Large Text (above 18pt) WCAG AA ✓ Pass

Any Text WCAG AA × Fail

Large Text (above 18pt) WCAG AAA × Fail

Any Text WCAG AAA × Fail

Black Background



This preview shows how the Decimal color 12287108 looks on a black background.

Color Contrast Check

Large Text (above 18pt) WCAG AA ✓ Pass

Any Text WCAG AA ✓ Pass

Large Text (above 18pt) WCAG AAA ✓ Pass

Any Text WCAG AAA × Fail

If you want to check with other color combinations, try the [Color Contrast Checker](#).

Decimal 12287108 Background



This preview shows how black text looks on a background with the Decimal color 12287108.

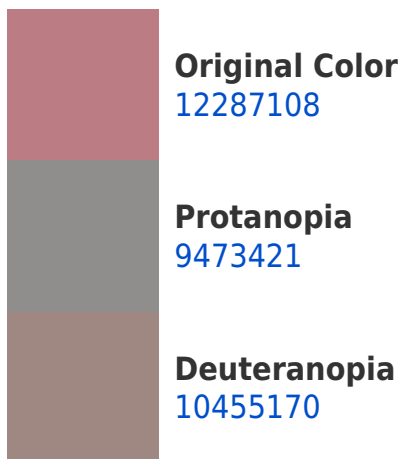



This preview shows how white text looks on a background with the Decimal color 12287108.

Color Blindness Simulation

Color vision deficiency is a very complex topic, and I could not describe the different causes any better than Wikipedia does, so if you want to learn more, you should check out their [article about color blindness](#).

Dichromacy





Tritanopia
12287109

Trichromacy



Original Color
12287108

Protanomaly
10520458

Deuteranomaly
11109507

Tritanomaly
12287109

Monochromacy



Original Color
12287108

Achromatopsia
9474192

Achromatomaly
10520972

CSS Examples

Text

The CSS property to change the color of the text to Decimal 12287108 is called "color". The color property can be set on classes, ids or directly on the HTML element.

This example shows how text in the color #BB7C84 looks like.

```
.text, #text, p{  
    color:#BB7C84  
}
```

If you want to add a text shadow in that color use the text-shadow property, you can generate a text shadow directly with our [CSS Text Shadow Generator](#).

Here you see how black text with a 4 pixel #BB7C84 colored shadow looks like.

```
.shadow{ text-shadow: 4px 4px 2px #BB7C84
}
```

Border

The CSS property to change the border of an element to Decimal 12287108 is called "border". The border property can be set on classes, ids or directly on the HTML element.

This example shows the color as border, it can be applied via the CSS property "border" or "border-color".

```
.border, #border, table{ border:4px solid
#BB7C84 }
```

If only the border color should be changed use the property `border-color`.

```
.border{ border-color:#BB7C84 }
```

If you want to add a box shadow in that color use:

Here you see how a box with a 4 pixel #BB7C84 colored shadow looks like.

```
.boxshadow{ -moz-box-shadow:4px 4px 4px  
4px #BB7C84; -webkit-box-shadow:4px 4px  
4px 4px #BB7C84; box-shadow:4px 4px 4px  
4px #BB7C84 }
```

Background

The CSS property to change the background color of an element to Decimal 12287108 is called "background". The background property can be set on classes, ids or directly on the HTML element.

```
.background, #background, body{  
background:#BB7C84 }
```

If only the background color should be changed can be used:

```
.background{ background-color:#BB7C84 }
```

This example shows the color as background, it is applied via the CSS property "background".

To optimize and compress your CSS code, you can use our [online CSS compressor and optimizer](#) based on csstidy. If you want to create a linear or radial gradient as background or border, check our [CSS Gradient Generator](#).

Hey! You found this booklet interesting? Support Converting Colors with the new Membership Option!

The pro membership hides all ads, plus gives you double the colors in the color bucket, and more awesome pro features!

[Learn more, Memberships starting at \\$2.50/m!](#)

**Follow me
on Twitter!**

@ConvertingColor