

Converting Colors

Decimal(12289130)

Have a look what the booklet for
Decimal(12289130) contains.

Decimal(12289130)	3
<i>Conversions</i>	4
<i>Details</i>	6
<i>Harmonies</i>	11
<i>Previews</i>	23
<i>Color Blindness Simulation</i>	26
<i>CSS Examples</i>	29

Color

Decimal(12289130)

Conversions

Conversions Part 1

Format	Color
Hex	BB846A
RGB	187, 132, 106
RGB Percent	73%, 52%, 42%
CMY	0.2667, 0.4824, 0.5843
CMYK	0.00, 0.29, 0.43, 0.27
HSL	19°, 37%, 57%
HSV	19°, 43%, 73%
XYZ	31.3463, 28.1079, 17.4089
YIQ	145.4810, 41.1260, 3.5740

Conversions

Conversions Part 2

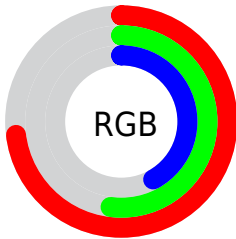
Format	Color
R_{YB}	187, 144, 106
Decimal	12289130
CIE Lab	59.99, 17.92, 22.46
CIE LCh	60, 28.735, 51.408
Yxy	28.1079, 0.4078, 0.3657
Android (android.graphics.Color)	4290479210 (0xFFBB846A)
YUV	145.4810, -19.4641, 36.4122
Hunter-Lab	53.0169, 12.7587, 17.6431

Details

The Decimal color **12289130** is a dark color, and the websafe version is hex **CC9966**. A complement of this color would be **6988219**, and the grayscale version is **9605778**.

A 20% lighter version of the original color is **16103837**, and **8671802** is the 20% darker color. If you saturate the color by 10%, you get **12285783**, and if you desaturate by 10%, it is **12292477**.

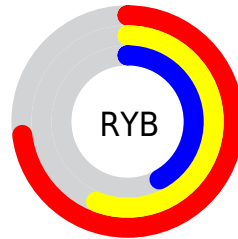
Distribution



Red (73%)

Green (52%)

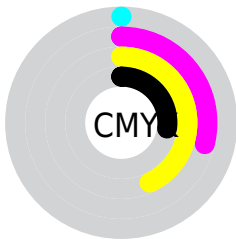
Blue (42%)



Red (73%)

Yellow (56%)

Blue (42%)

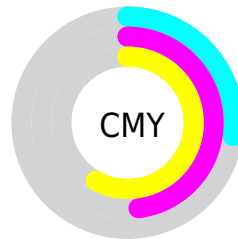


Cyan (0%)

Magenta (29%)

Yellow (43%)

Black (27%)



Cyan (27%)

Magenta (48%)

Yellow (58%)

Brightness & Saturation Gradients

These gradients show how the Decimal color 12289130 changes by changing the brightness by 10 percent. The first figure shows a shift by +10% for each color and the second figure -10%.

Similar to the brightness gradients but the following saturation gradients show a change of the Decimal color 12289130 by changing the saturation by 10% instead.

 12289130

 12289130

16777215

 10447698

 16103837

 8671802

 16766392

 6896420

 16773588

 5186831

 16777201

 3542784

 2097153

 0

 12289130

 12289130

 12285783

 12292477

12282693

12295567

12279346

12298914

12275999

12302261

12272909

12305352

12270592

12308698

12312045

12315391

12318463

Harmonies

Analogous

The Analogous color harmony consists of three colors that are next to each other on the color wheel.



12811903



12289130



11111519

Triad

The Triadic color harmony groups three colors that are evenly spaced from another and form a triangle on the color wheel.



12289130



5545608



9080255

Complementary

The Complementary color scheme is a pair of colors which are on the opposite of each other on the color wheel.



12289130



6988219

Split Complementary

Split-complementary colors differ from the complementary color scheme. The scheme consists of three colors, the original color and two neighbors of the complement color.



6526402



12289130



4038306

Square

The Square scheme is like the rectangle color scheme, but the four colors are evenly spaced on the color wheel.



12289130



7510896



4365239



11175088

Rectangle

The Rectangle color scheme consists of four colors that form a rectangle on the color wheel.



12289130



9998943



4365239



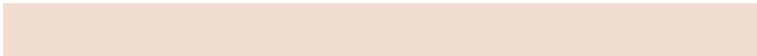
8229058

Sweetspot

The Sweet Spot groups the original color and five complimentary colors.



12289130



15916499



12282529



8023399



16448250



8026746

Same Dimension

The Same Dimension uses a secret algorithm to generate beautiful new colors.



12289130



15900020



12299370



6182997



10367744



2034176

Inverse Universe

The Inverse Universe completely reimagines the original color for something new.



6988219



7654130



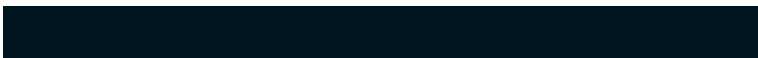
6977979



5593950



27550



5407

Previews

White Background



This preview shows how the Decimal color 12289130 looks on a white background.

Color Contrast Check

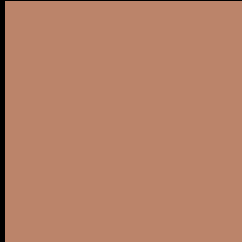
Large Text (above 18pt) WCAG AA ✓ Pass

Any Text WCAG AA × Fail

Large Text (above 18pt) WCAG AAA × Fail

Any Text WCAG AAA × Fail

Black Background



This preview shows how the Decimal color 12289130 looks on a black background.

Color Contrast Check

Large Text (above 18pt) WCAG AA ✓ Pass

Any Text WCAG AA ✓ Pass

Large Text (above 18pt) WCAG AAA ✓ Pass

Any Text WCAG AAA × Fail

If you want to check with other color combinations, try the [Color Contrast Checker](#).

Decimal 12289130 Background



This preview shows how black text looks on a background with the Decimal color 12289130.



This preview shows how white text looks on a background with the Decimal color 12289130.

Color Blindness Simulation

Color vision deficiency is a very complex topic, and I could not describe the different causes any better than Wikipedia does, so if you want to learn more, you should check out their [article about color blindness](#).

Dichromacy



Original Color
12289130

Protanopia
10195312

Deuteranopia
11307881



Tritanopia
12484745

Trichromacy



Original Color
12289130

Protanomaly
10980462

Deuteranomaly
11634793

Tritanomaly
12419454

Monochromacy



Original Color
12289130

Achromatopsia
9539985

Achromatomaly
10521731

CSS Examples

Text

The CSS property to change the color of the text to Decimal 12289130 is called "color". The color property can be set on classes, ids or directly on the HTML element.

This example shows how text in the color #BB846A looks like.

```
.text, #text, p{  
  color:#BB846A  
}
```

If you want to add a text shadow in that color use the text-shadow property, you can generate a text shadow directly with our [CSS Text Shadow Generator](#).

Here you see how black text with a 4 pixel #BB846A colored shadow looks like.

```
.shadow{ text-shadow: 4px 4px 2px #BB846A
}
```

Border

The CSS property to change the border of an element to Decimal 12289130 is called "border". The border property can be set on classes, ids or directly on the HTML element.

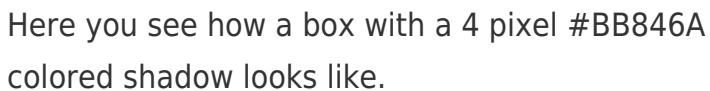
This example shows the color as border, it can be applied via the CSS property "border" or "border-color".

```
.border, #border, table{ border:4px solid
#BB846A }
```

If only the border color should be changed use the property `border-color`.

```
.border{ border-color:#BB846A }
```

If you want to add a box shadow in that color use:



Here you see how a box with a 4 pixel #BB846A colored shadow looks like.

```
.boxshadow{ -moz-box-shadow:4px 4px 4px  
4px #BB846A; -webkit-box-shadow:4px 4px  
4px 4px #BB846A; box-shadow:4px 4px 4px  
4px #BB846A }
```

Background

The CSS property to change the background color of an element to Decimal 12289130 is called "background". The background property can be set on classes, ids or directly on the HTML element.

```
.background, #background, body{  
background:#BB846A }
```

If only the background color should be changed can be used:

```
.background{ background-color:#BB846A }
```

This example shows the color as background, it is applied via the CSS property "background".

To optimize and compress your CSS code, you can use our [online CSS compressor and optimizer](#) based on csstidy. If you want to create a linear or radial gradient as background or border, check our [CSS Gradient Generator](#).

Hey! You found this booklet interesting? Support Converting Colors with the new Membership Option!

The pro membership hides all ads, plus gives you double the colors in the color bucket, and more awesome pro features!

[Learn more, Memberships starting at \\$2.50/m!](#)

**Follow me
on Twitter!**

@ConvertingColor