

Converting Colors

Decimal(12289386)

Have a look what the booklet for
Decimal(12289386) contains.

| | |
|--|----|
| Decimal(12289386) | 3 |
| <i>Conversions</i> | 4 |
| <i>Details</i> | 6 |
| <i>Harmonies</i> | 11 |
| <i>Previews</i> | 23 |
| <i>Color Blindness Simulation</i> | 26 |
| <i>CSS Examples</i> | 29 |

Color

Decimal(12289386)

Conversions

Conversions Part 1

| Format | Color |
|---------------|---------------------------|
| Hex | BB856A |
| RGB | 187, 133, 106 |
| RGB Percent | 73%, 52%, 42% |
| CMY | 0.2667, 0.4784, 0.5843 |
| CMYK | 0.00, 0.29, 0.43, 0.27 |
| HSL | 20°, 37%, 57% |
| HSV | 20°, 43%, 73% |
| XYZ | 31.4826, 28.3805, 17.4543 |
| YIQ | 146.0680, 40.8510, 3.0510 |

Conversions

Conversions Part 2

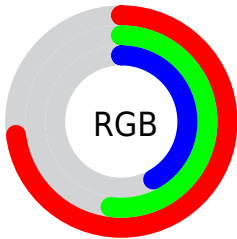
| Format | Color |
|-------------------------------------|--------------------------------|
| R_{YB} | 187, 147, 106 |
| Decimal | 12289386 |
| CIE _{Lab} | 60.23, 17.37, 22.79 |
| CIE _{LCh} | 60, 28.652, 52.685 |
| Yxy | 28.3805, 0.4072, 0.3671 |
| Android (android.graphics.Color) | 4290479466 (0xFFBB856A) |
| YUV | 146.0680, -19.7535, 35.8974 |
| Hunter-Lab | 53.2733, 12.2586, 17.8657 |

Details

The Decimal color **12289386** is a dark color, and the websafe version is hex **CC9966**. A complement of this color would be **6987963**, and the grayscale version is **9605778**.

A 20% lighter version of the original color is **16104093**, and **8672058** is the 20% darker color. If you saturate the color by 10%, you get **12286295**, and if you desaturate by 10%, it is **12292477**.

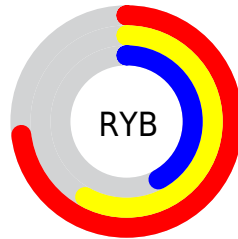
Distribution



Red (73%)

Green (52%)

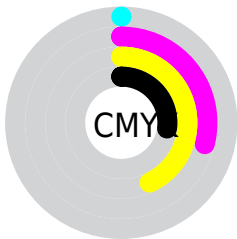
Blue (42%)



Red (73%)

Yellow (58%)

Blue (42%)

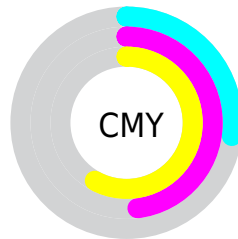


Cyan (0%)

Magenta (29%)

Yellow (43%)

Black (27%)



Cyan (27%)

Magenta (48%)

Yellow (58%)

Brightness & Saturation Gradients

These gradients show how the Decimal color 12289386 changes by changing the brightness by 10 percent. The first figure shows a shift by +10% for each color and the second figure -10%.

Similar to the brightness gradients but the following saturation gradients show a change of the Decimal color 12289386 by changing the saturation by 10% instead.

 12289386

 12289386

16777215

 10447954

 16104093

 8672058

 16766648

 6896676

 16774100

 5187087

 16777201

 3543040

 2097153

 0

 12289386

 12289386

 12286295

 12292477

 12282949

 12295823

 12279858

 12298914

 12276511

 12302261

 12273421

 12305352

 12271104

 12308698

 12311789

 12315135

 12318207

Harmonies

Analogous

The Analogous color harmony consists of three colors that are next to each other on the color wheel.



12812159



12289386



11046239

Triad

The Triadic color harmony groups three colors that are evenly spaced from another and form a triangle on the color wheel.



12289386



5545866



9211328

Complementary

The Complementary color scheme is a pair of colors which are on the opposite of each other on the color wheel.



12289386



6987963

Split Complementary

Split-complementary colors differ from the complementary color scheme. The scheme consists of three colors, the original color and two neighbors of the complement color.



6723011



12289386



4038564

Square

The Square scheme is like the rectangle color scheme, but the four colors are evenly spaced on the color wheel.



12289386



7510898



4496569



11240624

Rectangle

The Rectangle color scheme consists of four colors that form a rectangle on the color wheel.



12289386



9999199



4496569



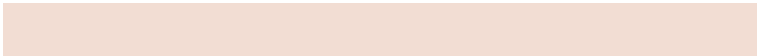
8425666

Sweetspot

The Sweet Spot groups the original color and five complimentary colors.



12289386



15916499



12282528



8023399



16448250



8026746

Same Dimension

The Same Dimension uses a secret algorithm to generate beautiful new colors.



12289386



15900276



12299882



6182997



10368256



2034176

Inverse Universe

The Inverse Universe completely reimagines the original color for something new.



6987963



7653618



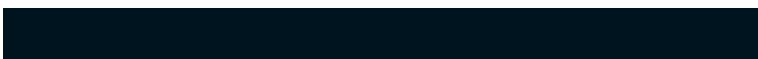
6977723



5593950



27038



5151

Previews

White Background



This preview shows how the Decimal color 12289386 looks on a white background.

Color Contrast Check

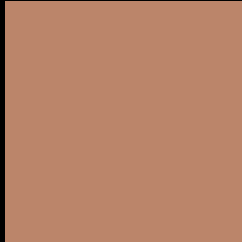
Large Text (above 18pt) WCAG AA ✓ Pass

Any Text WCAG AA × Fail

Large Text (above 18pt) WCAG AAA × Fail

Any Text WCAG AAA × Fail

Black Background



This preview shows how the Decimal color 12289386 looks on a black background.

Color Contrast Check

Large Text (above 18pt) WCAG AA ✓ Pass

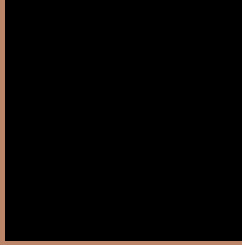
Any Text WCAG AA ✓ Pass

Large Text (above 18pt) WCAG AAA ✓ Pass

Any Text WCAG AAA × Fail

If you want to check with other color combinations, try the [Color Contrast Checker](#).

Decimal 12289386 Background



This preview shows how black text looks on a background with the Decimal color 12289386.



This preview shows how white text looks on a background with the Decimal color 12289386.

Color Blindness Simulation

Color vision deficiency is a very complex topic, and I could not describe the different causes any better than Wikipedia does, so if you want to learn more, you should check out their [article about color blindness](#).


Dichromacy



Original Color
12289386

Protanopia
10195311

Deuteranopia
11373417



Tritanopia
12485002

Trichromacy



Original Color
12289386

Protanomaly
10980717

Deuteranomaly
11700585

Tritanomaly
12419710

Monochromacy



Original Color
12289386

Achromatopsia
9605778

Achromatomaly
10587523

CSS Examples

Text

The CSS property to change the color of the text to Decimal 12289386 is called "color". The color property can be set on classes, ids or directly on the HTML element.

This example shows how text in the color #BB856A looks like.

```
.text, #text, p{  
  color:#BB856A  
}
```

If you want to add a text shadow in that color use the text-shadow property, you can generate a text shadow directly with our [CSS Text Shadow Generator](#).

Here you see how black text with a 4 pixel #BB856A colored shadow looks like.

```
.shadow{ text-shadow: 4px 4px 2px #BB856A
}
```

Border

The CSS property to change the border of an element to Decimal 12289386 is called "border". The border property can be set on classes, ids or directly on the HTML element.

This example shows the color as border, it can be applied via the CSS property "border" or "border-color".

```
.border, #border, table{ border:4px solid
#BB856A }
```

If only the border color should be changed use the property `border-color`.

```
.border{ border-color:#BB856A }
```

If you want to add a box shadow in that color use:

Here you see how a box with a 4 pixel #BB856A colored shadow looks like.

```
.boxshadow{ -moz-box-shadow:4px 4px 4px  
4px #BB856A; -webkit-box-shadow:4px 4px  
4px 4px #BB856A; box-shadow:4px 4px 4px  
4px #BB856A }
```

Background

The CSS property to change the background color of an element to Decimal 12289386 is called "background". The background property can be set on classes, ids or directly on the HTML element.

```
.background, #background, body{  
background:#BB856A }
```

If only the background color should be changed can be used:

```
.background{ background-color:#BB856A }
```

This example shows the color as background, it is applied via the CSS property "background".

To optimize and compress your CSS code, you can use our [online CSS compressor and optimizer](#) based on csstidy. If you want to create a linear or radial gradient as background or border, check our [CSS Gradient Generator](#).

Hey! You found this booklet interesting? Support Converting Colors with the new Membership Option!

The pro membership hides all ads, plus gives you double the colors in the color bucket, and more awesome pro features!

[Learn more, Memberships starting at \\$2.50/m!](#)

**Follow me
on Twitter!**

@ConvertingColor