

# Converting Colors

Decimal(12290685)

Have a look what the booklet for  
Decimal(12290685) contains.

<b>Decimal(12290685)</b> .....	3
<i><b>Conversions</b></i> .....	4
<i><b>Details</b></i> .....	6
<i><b>Harmonies</b></i> .....	11
<i><b>Previews</b></i> .....	23
<i><b>Color Blindness Simulation</b></i> .....	26
<i><b>CSS Examples</b></i> .....	29

# **Color**

**Decimal(12290685)**

# Conversions

## Conversions Part 1

Format	Color
Hex	BB8A7D
RGB	187, 138, 125
RGB Percent	73%, 54%, 49%
CMY	0.2667, 0.4588, 0.5098
CMYK	0.00, 0.26, 0.33, 0.27
HSL	13°, 31%, 61%
HSV	13°, 33%, 73%
XYZ	33.2837, 30.2224, 23.4813
YIQ	151.1690, 33.3770, 6.3450

# Conversions

## Conversions Part 2

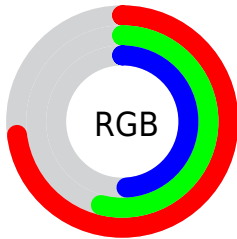
Format	Color
R <sub>YB</sub>	187, 141, 125
Decimal	12290685
CIE Lab	61.85, 16.88, 14.28
CIE LCh	62, 22.113, 40.224
Yxy	30.2224, 0.3826, 0.3474
Android (android.graphics.Color)	4290480765 (0xFFBB8A7D)
YUV	151.1690, -12.9013, 31.4238
Hunter-Lab	54.9749, 11.8638, 13.1581

# Details

The Decimal color **12290685** is a dark color, and the websafe version is hex **CC9999**. A complement of this color would be **8236731**, and the grayscale version is **9934743**.

A 20% lighter version of the original color is **16040114**, and **8673356** is the 20% darker color. If you saturate the color by 10%, you get **12286826**, and if you desaturate by 10%, it is **12294544**.

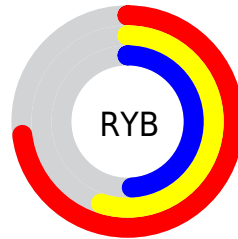
# Distribution



Red (73%)

Green (54%)

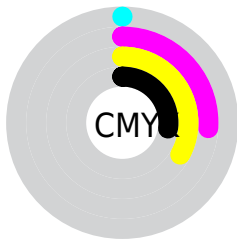
Blue (49%)



Red (73%)

Yellow (55%)

Blue (49%)

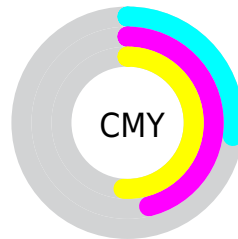


Cyan (0%)

Magenta (26%)

Yellow (33%)

Black (27%)



Cyan (27%)

Magenta (46%)

Yellow (51%)

# Brightness & Saturation Gradients

These gradients show how the Decimal color 12290685 changes by changing the brightness by 10 percent. The first figure shows a shift by +10% for each color and the second figure -10%.

Similar to the brightness gradients but the following saturation gradients show a change of the Decimal color 12290685 by changing the saturation by 10% instead.




 12290685

 12290685

16777215

 10448996

 16040114

 8673356

 16768205

 6963253

 16775401

 5319200

 3675145

 2293760

 0

 12290685

 12290685

 12286826

 12294544

 12282968

 12298402

 12279365

 12302005

 12275506

 12305864

 12271647

 12309723

 12267789

 12313581

 12265216

 12317183

 12320767

# Harmonies

## Analogous

The Analogous color harmony consists of three colors that are next to each other on the color wheel.



12421007



12290685



11505777

# Triad

The Triadic color harmony groups three colors that are evenly spaced from another and form a triangle on the color wheel.



12290685



7446408



8885692

# Complementary

The Complementary color scheme is a pair of colors which are on the opposite of each other on the color wheel.



12290685



8236731

# Split Complementary

Split-complementary colors differ from the complementary color scheme. The scheme consists of three colors, the original color and two neighbors of the complement color.



7183290



12290685



6332828

# Square

The Square scheme is like the rectangle color scheme, but the four colors are evenly spaced on the color wheel.



12290685



8887415



6135726



10587827

# Rectangle

The Rectangle color scheme consists of four colors that form a rectangle on the color wheel.



12290685



10785902



6135726



8296380

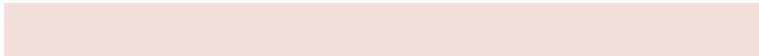


# Sweetspot

The Sweet Spot groups the original color and five complimentary colors.



12290685



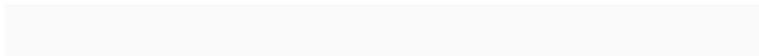
15917018



12287407



8023916



16448250



8026746



# Same Dimension

The Same Dimension uses a secret algorithm to generate beautiful new colors.



12290685



15902353



12298365



6182741



10363136



2033152



# Inverse Universe

The Inverse Universe completely reimagines the original color for something new.



8236731



9559794



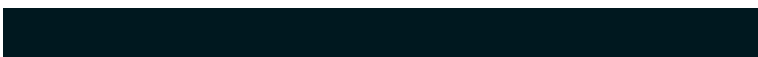
8229051



5594206



32158



6175



# Previews

## White Background



This preview shows how the Decimal color 12290685 looks on a white background.

## Color Contrast Check

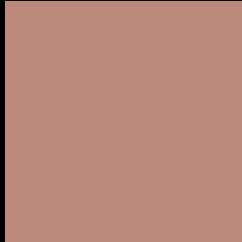
Large Text (above 18pt) WCAG AA × Fail

Any Text WCAG AA × Fail

Large Text (above 18pt) WCAG AAA × Fail

Any Text WCAG AAA × Fail

# Black Background



This preview shows how the Decimal color 12290685 looks on a black background.

## Color Contrast Check

Large Text (above 18pt) WCAG AA ✓ Pass

Any Text WCAG AA ✓ Pass

Large Text (above 18pt) WCAG AAA ✓ Pass

Any Text WCAG AAA ✓ Pass

If you want to check with other color combinations, try the [Color Contrast Checker](#).



## Decimal 12290685 Background



This preview shows how black text looks on a background with the Decimal color 12290685.



This preview shows how white text looks on a background with the Decimal color 12290685.

# Color Blindness Simulation

Color vision deficiency is a very complex topic, and I could not describe the different causes any better than Wikipedia does, so if you want to learn more, you should check out their [article about color blindness](#).

## Dichromacy



**Original Color**  
12290685

**Protanopia**  
10327427

**Deuteranopia**  
11374716



**Tritanopia**  
12421009

# Trichromacy



**Original Color**  
12290685

**Protanomaly**  
11047297

**Deuteranomaly**  
11701884

**Tritanomaly**  
12355722

# Monochromacy



**Original Color**  
12290685

**Achromatopsia**  
9934743

**Achromatomaly**  
10785422

# CSS Examples

## Text

The CSS property to change the color of the text to Decimal 12290685 is called "color". The color property can be set on classes, ids or directly on the HTML element.

This example shows how text in the color #BB8A7D looks like.

```
.text, #text, p{  
  color:#BB8A7D  
}
```

If you want to add a text shadow in that color use the text-shadow property, you can generate a text shadow directly with our [CSS Text Shadow Generator](#).

Here you see how black text with a 4 pixel #BB8A7D colored shadow looks like.

```
.shadow{ text-shadow: 4px 4px 2px #BB8A7D
}
```

## Border

The CSS property to change the border of an element to Decimal 12290685 is called "border". The border property can be set on classes, ids or directly on the HTML element.

This example shows the color as border, it can be applied via the CSS property "border" or "border-color".

```
.border, #border, table{ border:4px solid
#BB8A7D }
```

If only the border color should be changed use the property `border-color`.

```
.border{ border-color:#BB8A7D }
```

If you want to add a box shadow in that color use:

Here you see how a box with a 4 pixel #BB8A7D colored shadow looks like.

```
.boxshadow{ -moz-box-shadow:4px 4px 4px  
4px #BB8A7D; -webkit-box-shadow:4px 4px  
4px 4px #BB8A7D; box-shadow:4px 4px 4px  
4px #BB8A7D }
```

# Background

The CSS property to change the background color of an element to Decimal 12290685 is called "background". The background property can be set on classes, ids or directly on the HTML element.

```
.background, #background, body{  
background:#BB8A7D }
```

If only the background color should be changed can be used:

```
.background{ background-color:#BB8A7D }
```

This example shows the color as background, it is applied via the CSS property "background".

To optimize and compress your CSS code, you can use our [online CSS compressor and optimizer](#) based on csstidy. If you want to create a linear or radial gradient as background or border, check our [CSS Gradient Generator](#).



Hey! You found this booklet interesting? Support Converting Colors with the new Membership Option!

The pro membership hides all ads, plus gives you double the colors in the color bucket, and more awesome pro features!

**[Learn more, Memberships starting at \\$2.50/m!](#)**

**Follow me  
on Twitter!**

@ConvertingColor