

Converting Colors

Decimal(12291222)

Have a look what the booklet for
Decimal(12291222) contains.

Decimal(12291222)	3
<i>Conversions</i>	4
<i>Details</i>	6
<i>Harmonies</i>	11
<i>Previews</i>	23
<i>Color Blindness Simulation</i>	26
<i>CSS Examples</i>	29

Color

Decimal(12291222)

Conversions

Conversions Part 1

Format	Color
Hex	BB8C96
RGB	187, 140, 150
RGB Percent	73%, 55%, 59%
CMY	0.2667, 0.4510, 0.4118
CMYK	0.00, 0.25, 0.20, 0.27
HSL	347°, 26%, 64%
HSV	347°, 25%, 73%
XYZ	35.3766, 31.5230, 33.0742
YIQ	155.1930, 24.8020, 13.0740

Conversions

Conversions Part 2

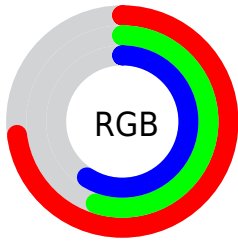
Format	Color
RYB	187, 140, 150
Decimal	12291222
CIELab	62.95, 19.38, 1.67
CIElCh	63, 19.448, 4.931
Yxy	31.5230, 0.3539, 0.3153
Android (android.graphics.Color)	4290481302 (0xFFBB8C96)
YUV	155.1930, -2.5601, 27.8947
Hunter-Lab	56.1453, 14.2168, 4.3751

Details

The Decimal color **12291222** is a light color, and the websafe version is hex **CC9999**. A complement of this color would be **9223089**, and the grayscale version is **10197915**.

A 20% lighter version of the original color is **16040652**, and **8739427** is the 20% darker color. If you saturate the color by 10%, you get **12286343**, and if you desaturate by 10%, it is **12296101**.

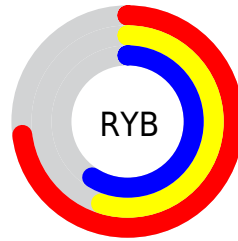
Distribution



Red (73%)

Green (55%)

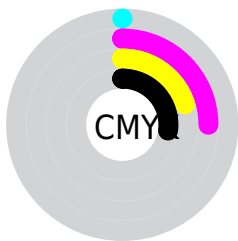
Blue (59%)



Red (73%)

Yellow (55%)

Blue (59%)

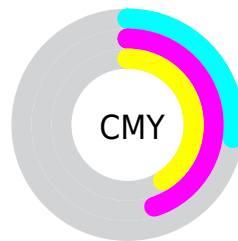


Cyan (0%)

Magenta (25%)

Yellow (20%)

Black (27%)



Cyan (27%)

Magenta (45%)

Yellow (41%)

Brightness & Saturation Gradients

These gradients show how the Decimal color 12291222 changes by changing the brightness by 10 percent. The first figure shows a shift by +10% for each color and the second figure -10%.

Similar to the brightness gradients but the following saturation gradients show a change of the Decimal color 12291222 by changing the saturation by 10% instead.

 12291222

 12291222

16777215

 10515068

 16040652

 8739427

 16768744

 7029323

 16775935

 5385013

 3806496

 2490376

 0

 12291222

 12291222

 12286343

 12296101

 12281721

 12300723

 12276842

 12305602

 12271963

 12310481

 12267340

 12315360

 12262462

 12319982

 12257583

 12320765

 12255272

 12320767

Harmonies

Analogous

The Analogous color harmony consists of three colors that are next to each other on the color wheel.



11636391



12291222



12291717

Triad

The Triadic color harmony groups three colors that are evenly spaced from another and form a triangle on the color wheel.



12291222



9411964



7577271

Complementary

The Complementary color scheme is a pair of colors which are on the opposite of each other on the color wheel.



12291222



9223089

Split Complementary

Split-complementary colors differ from the complementary color scheme. The scheme consists of three colors, the original color and two neighbors of the complement color.



6857131



12291222



8167817

Square

The Square scheme is like the rectangle color scheme, but the four colors are evenly spaced on the color wheel.



12291222



10721398



7185051



8952250

Rectangle

The Rectangle color scheme consists of four colors that form a rectangle on the color wheel.



12291222



11964797



7185051



7249844

Sweetspot

The Sweet Spot groups the original color and five complimentary colors.



12291222



15917027



11635899



8023665



16448250



8026746

Same Dimension

The Same Dimension uses a secret algorithm to generate beautiful new colors.



12291222



15903417



12294540



6182231



10354722



2031623

Inverse Universe

The Inverse Universe completely reimagines the original color for something new.



12291222



15903417



9219771



6182231



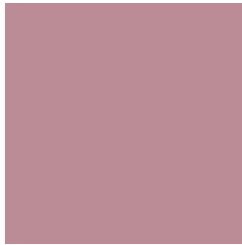
10354722



2031623

Previews

White Background



This preview shows how the Decimal color 12291222 looks on a white background.

Color Contrast Check

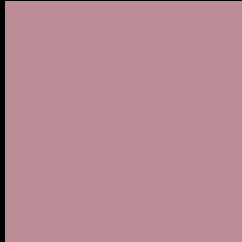
Large Text (above 18pt) WCAG AA × Fail

Any Text WCAG AA × Fail

Large Text (above 18pt) WCAG AAA × Fail

Any Text WCAG AAA × Fail

Black Background



This preview shows how the Decimal color 12291222 looks on a black background.

Color Contrast Check

Large Text (above 18pt) WCAG AA ✓ Pass

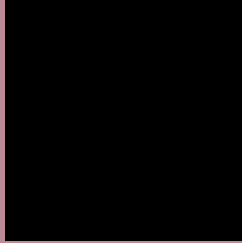
Any Text WCAG AA ✓ Pass

Large Text (above 18pt) WCAG AAA ✓ Pass

Any Text WCAG AAA ✓ Pass

If you want to check with other color combinations, try the [Color Contrast Checker](#).

Decimal 12291222 Background



This preview shows how black text looks on a background with the Decimal color 12291222.



This preview shows how white text looks on a background with the Decimal color 12291222.

Color Blindness Simulation

Color vision deficiency is a very complex topic, and I could not describe the different causes any better than Wikipedia does, so if you want to learn more, you should check out their [article about color blindness](#).

Dichromacy





Tritanopia
12291223

Trichromacy



Original Color
12291222

Protanomaly
10917018

Deuteranomaly
11571605

Tritanomaly
12291223

Monochromacy



Original Color
12291222

Achromatopsia
10197915

Achromatomaly
10983065

CSS Examples

Text

The CSS property to change the color of the text to Decimal 12291222 is called "color". The color property can be set on classes, ids or directly on the HTML element.

This example shows how text in the color #BB8C96 looks like.

```
.text, #text, p{  
    color:#BB8C96  
}
```

If you want to add a text shadow in that color use the text-shadow property, you can generate a text shadow directly with our [CSS Text Shadow Generator](#).

Here you see how black text with a 4 pixel #BB8C96 colored shadow looks like.

```
.shadow{ text-shadow: 4px 4px 2px #BB8C96
}
```

Border

The CSS property to change the border of an element to Decimal 12291222 is called "border". The border property can be set on classes, ids or directly on the HTML element.

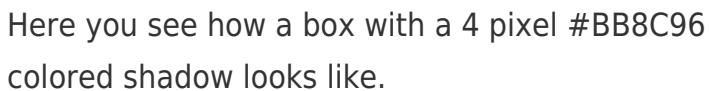
This example shows the color as border, it can be applied via the CSS property "border" or "border-color".

```
.border, #border, table{ border:4px solid
#BB8C96 }
```

If only the border color should be changed use the property `border-color`.

```
.border{ border-color:#BB8C96 }
```

If you want to add a box shadow in that color use:



Here you see how a box with a 4 pixel #BB8C96 colored shadow looks like.

```
.boxshadow{ -moz-box-shadow:4px 4px 4px  
4px #BB8C96; -webkit-box-shadow:4px 4px  
4px 4px #BB8C96; box-shadow:4px 4px 4px  
4px #BB8C96 }
```

Background

The CSS property to change the background color of an element to Decimal 12291222 is called "background". The background property can be set on classes, ids or directly on the HTML element.

```
.background, #background, body{  
background:#BB8C96 }
```

If only the background color should be changed can be used:

```
.background{ background-color:#BB8C96 }
```

This example shows the color as background, it is applied via the CSS property "background".

To optimize and compress your CSS code, you can use our [online CSS compressor and optimizer](#) based on csstidy. If you want to create a linear or radial gradient as background or border, check our [CSS Gradient Generator](#).

Hey! You found this booklet interesting? Support Converting Colors with the new Membership Option!

The pro membership hides all ads, plus gives you double the colors in the color bucket, and more awesome pro features!

[Learn more, Memberships starting at \\$2.50/m!](#)

**Follow me
on Twitter!**

@ConvertingColor