

Converting Colors

Decimal(12291725)

Have a look what the booklet for
Decimal(12291725) contains.

Decimal(12291725)	3
<i>Conversions</i>	4
<i>Details</i>	6
<i>Harmonies</i>	11
<i>Previews</i>	23
<i>Color Blindness Simulation</i>	26
<i>CSS Examples</i>	29

Color

Decimal(12291725)

Conversions

Conversions Part 1

Format	Color
Hex	BB8E8D
RGB	187, 142, 141
RGB Percent	73%, 56%, 55%
CMY	0.2667, 0.4431, 0.4471
CMYK	0.00, 0.24, 0.25, 0.27
HSL	1°, 25%, 64%
HSV	1°, 25%, 73%
XYZ	34.9742, 31.8339, 29.5005
YIQ	155.3410, 27.1410, 9.2290

Conversions

Conversions Part 2

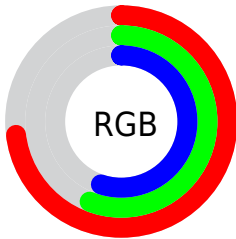
Format	Color
RYB	187, 142, 141
Decimal	12291725
CIELab	63.21, 16.89, 7.15
CIELCh	63, 18.341, 22.929
Yxy	31.8339, 0.3631, 0.3305
Android (android.graphics.Color)	4290481805 (0xFFBB8E8D)
YUV	155.3410, -7.0701, 27.7649
Hunter-Lab	56.4215, 11.9098, 8.4947

Details

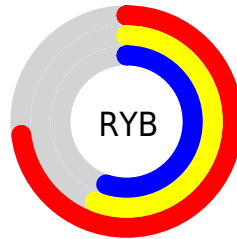
The Decimal color **12291725** is a light color, and the websafe version is hex **CC9999**. A complement of this color would be **9288379**, and the grayscale version is **10197915**.

A 20% lighter version of the original color is **16041155**, and **8739931** is the 20% darker color. If you saturate the color by 10%, you get **12287098**, and if you desaturate by 10%, it is **12296352**.

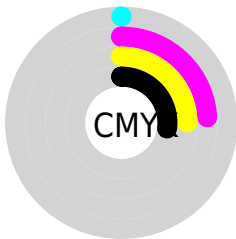
Distribution



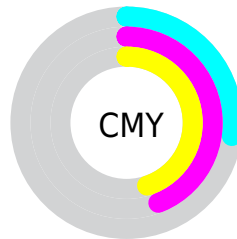
- Red (73%)
- Green (56%)
- Blue (55%)



- Red (73%)
- Yellow (56%)
- Blue (55%)



- Cyan (0%)
- Magenta (24%)
- Yellow (25%)
- Black (27%)



- Cyan (27%)
- Magenta (44%)
- Yellow (45%)

Brightness & Saturation Gradients

These gradients show how the Decimal color 12291725 changes by changing the brightness by 10 percent. The first figure shows a shift by +10% for each color and the second figure -10%.

Similar to the brightness gradients but the following saturation gradients show a change of the Decimal color 12291725 by changing the saturation by 10% instead.

 12291725

 12291725

16777215

 10515571

 16041155

 8739931

 16769246

 7029828

 16776699

 5385517

 3807257

 2424832

 0

 12291725

 12291725

 12287098

 12296352

 12282216

 12301234

 12277589

 12305861

 12272962

 12310488

 12268336

 12315115

 12263453

 12319997

 12258826

 12320767

 12256256

Harmonies

Analogous

The Analogous color harmony consists of three colors that are next to each other on the color wheel.



12029598



12291725



11964800

Triad

The Triadic color harmony groups three colors that are evenly spaced from another and form a triangle on the color wheel.



12291725



8757381



8494265

Complementary

The Complementary color scheme is a pair of colors which are on the opposite of each other on the color wheel.



12291725



9288379

Split Complementary

Split-complementary colors differ from the complementary color scheme. The scheme consists of three colors, the original color and two neighbors of the complement color.



7446706



12291725



7709332

Square

The Square scheme is like the rectangle color scheme, but the four colors are evenly spaced on the color wheel.



12291725



10001531



7119525



9934519

Rectangle

The Rectangle color scheme consists of four colors that form a rectangle on the color wheel.



12291725



11441530



7119525



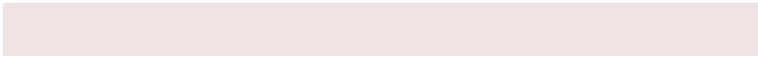
8101304

Sweetspot

The Sweet Spot groups the original color and five complimentary colors.



12291725



15917793



12291514



8024433



16448250



8026746

Same Dimension

The Same Dimension uses a secret algorithm to generate beautiful new colors.



12291725



15903658



12297613



6182229



10355456



2031872

Inverse Universe

The Inverse Universe completely reimagines the original color for something new.



9288379



11203058



9282491



5594718



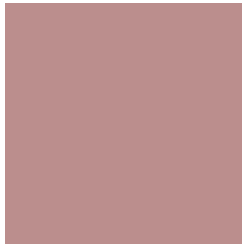
39838



7711

Previews

White Background



This preview shows how the Decimal color 12291725 looks on a white background.

Color Contrast Check

Large Text (above 18pt) WCAG AA × Fail

Any Text WCAG AA × Fail

Large Text (above 18pt) WCAG AAA × Fail

Any Text WCAG AAA × Fail

Black Background



This preview shows how the Decimal color 12291725 looks on a black background.

Color Contrast Check

Large Text (above 18pt) WCAG AA ✓ Pass

Any Text WCAG AA ✓ Pass

Large Text (above 18pt) WCAG AAA ✓ Pass

Any Text WCAG AAA ✓ Pass

If you want to check with other color combinations, try the [Color Contrast Checker](#).

Decimal 12291725 Background



This preview shows how black text looks on a background with the Decimal color 12291725.



This preview shows how white text looks on a background with the Decimal color 12291725.

Color Blindness Simulation

Color vision deficiency is a very complex topic, and I could not describe the different causes any better than Wikipedia does, so if you want to learn more, you should check out their [article about color blindness](#).


Dichromacy



Original Color
12291725

Protanopia
10394003

Deuteranopia
11375756



Tritanopia
12356759

Trichromacy



Original Color
12291725

Protanomaly
11113873

Deuteranomaly
11702924

Tritanomaly
12357011

Monochromacy



Original Color
12291725

Achromatopsia
10197915

Achromatomaly
10983062

CSS Examples

Text

The CSS property to change the color of the text to Decimal 12291725 is called "color". The color property can be set on classes, ids or directly on the HTML element.

This example shows how text in the color #BB8E8D looks like.

```
.text, #text, p{  
    color:#BB8E8D  
}
```

If you want to add a text shadow in that color use the text-shadow property, you can generate a text shadow directly with our [CSS Text Shadow Generator](#).

Here you see how black text with a 4 pixel #BB8E8D colored shadow looks like.

```
.shadow{ text-shadow: 4px 4px 2px #BB8E8D
}
```

Border

The CSS property to change the border of an element to Decimal 12291725 is called "border". The border property can be set on classes, ids or directly on the HTML element.

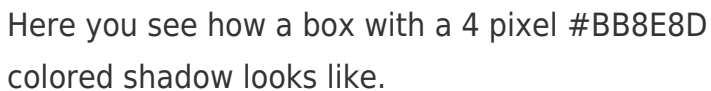
This example shows the color as border, it can be applied via the CSS property "border" or "border-color".

```
.border, #border, table{ border:4px solid
#BB8E8D }
```

If only the border color should be changed use the property `border-color`.

```
.border{ border-color:#BB8E8D }
```

If you want to add a box shadow in that color use:



Here you see how a box with a 4 pixel #BB8E8D colored shadow looks like.

```
.boxshadow{ -moz-box-shadow:4px 4px 4px  
4px #BB8E8D; -webkit-box-shadow:4px 4px  
4px 4px #BB8E8D; box-shadow:4px 4px 4px  
4px #BB8E8D }
```

Background

The CSS property to change the background color of an element to Decimal 12291725 is called "background". The background property can be set on classes, ids or directly on the HTML element.

```
.background, #background, body{  
background:#BB8E8D }
```

If only the background color should be changed can be used:

```
.background{ background-color:#BB8E8D }
```

This example shows the color as background, it is applied via the CSS property "background".

To optimize and compress your CSS code, you can use our [online CSS compressor and optimizer](#) based on csstidy. If you want to create a linear or radial gradient as background or border, check our [CSS Gradient Generator](#).

Hey! You found this booklet interesting? Support Converting Colors with the new Membership Option!

The pro membership hides all ads, plus gives you double the colors in the color bucket, and more awesome pro features!

[Learn more, Memberships starting at \\$2.50/m!](#)

**Follow me
on Twitter!**

@ConvertingColor