

Converting Colors

Decimal(12293240)

Have a look what the booklet for
Decimal(12293240) contains.

Decimal(12293240)	3
<i>Conversions</i>	4
<i>Details</i>	6
<i>Harmonies</i>	11
<i>Previews</i>	23
<i>Color Blindness Simulation</i>	26
<i>CSS Examples</i>	29

Color

Decimal(12293240)

Conversions

Conversions Part 1

Format	Color
Hex	BB9478
RGB	187, 148, 120
RGB Percent	73%, 58%, 47%
CMY	0.2667, 0.4196, 0.5294
CMYK	0.00, 0.21, 0.36, 0.27
HSL	25°, 33%, 60%
HSV	25°, 36%, 73%
XYZ	34.4736, 33.1007, 22.3414
YIQ	156.4690, 32.2320, -0.4400

Conversions

Conversions Part 2

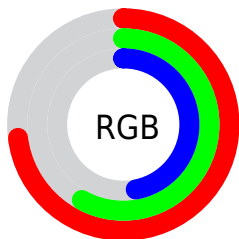
Format	Color
RYB	187, 168, 120
Decimal	12293240
CIELab	64.24, 10.70, 20.39
CIELCh	64, 23.025, 62.296
Yxy	33.1007, 0.3834, 0.3681
Android (android.graphics.Color)	4290483320 (0xFFBB9478)
YUV	156.4690, -17.9792, 26.7757
Hunter-Lab	57.5332, 6.2732, 17.2496

Details

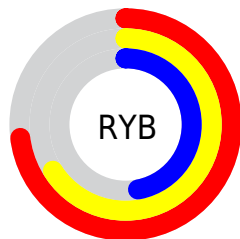
The Decimal color **12293240** is a light color, and the websafe version is hex **CC9966**. A complement of this color would be **7905211**, and the grayscale version is **10329501**.

A 20% lighter version of the original color is **16042668**, and **8675655** is the 20% darker color. If you saturate the color by 10%, you get **12290405**, and if you desaturate by 10%, it is **12296075**.

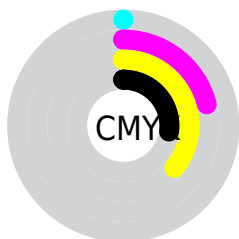
Distribution



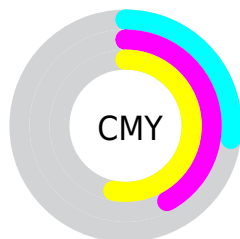
- Red (73%)
- Green (58%)
- Blue (47%)



- Red (73%)
- Yellow (66%)
- Blue (47%)



- Cyan (0%)
- Magenta (21%)
- Yellow (36%)
- Black (27%)



- Cyan (27%)
- Magenta (42%)
- Yellow (53%)

Brightness & Saturation Gradients

These gradients show how the Decimal color 12293240 changes by changing the brightness by 10 percent. The first figure shows a shift by +10% for each color and the second figure -10%.

Similar to the brightness gradients but the following saturation gradients show a change of the Decimal color 12293240 by changing the saturation by 10% instead.

 12293240

 12293240

16777215

 10451551

 16042668

 8675655

 16770760

 6965809

 16777188

 5321499

 3743234

 2229760

 0

 12293240

 12293240

 12290405

 12296075

 12287571

 12298909

 12284736

 12301744

 12281901

 12304579

 12279323

 12307157

 12276488

 12309992

 12275200

 12312827

 12315647

 12318463

Harmonies

Analogous

The Analogous color harmony consists of three colors that are next to each other on the color wheel.



12947335



12293240



11115379

Triad

The Triadic color harmony groups three colors that are evenly spaced from another and form a triangle on the color wheel.



12293240



6858653



10589886

Complementary

The Complementary color scheme is a pair of colors which are on the opposite of each other on the color wheel.



12293240



7905211

Split Complementary

Split-complementary colors differ from the complementary color scheme. The scheme consists of three colors, the original color and two neighbors of the complement color.



8756676



12293240



6334385

Square

The Square scheme is like the rectangle color scheme, but the four colors are evenly spaced on the color wheel.



12293240



8103304



7054271



12095663

Rectangle

The Rectangle color scheme consists of four colors that form a rectangle on the color wheel.



12293240



10198901



7054271



10000578

Sweetspot

The Sweet Spot groups the original color and five complimentary colors.



12293240



15918040



12286111



8024426



16448250



8026746

Same Dimension

The Same Dimension uses a secret algorithm to generate beautiful new colors.



12293240



15906442



12301688



6183253



10371584



2034944

Inverse Universe

The Inverse Universe completely reimagines the original color for something new.



7905211



9095154



7896763



5593694



23710



4639

Previews

White Background



This preview shows how the Decimal color 12293240 looks on a white background.

Color Contrast Check

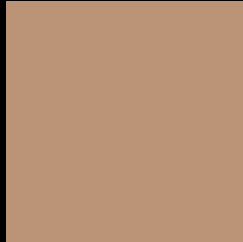
Large Text (above 18pt) WCAG AA × Fail

Any Text WCAG AA × Fail

Large Text (above 18pt) WCAG AAA × Fail

Any Text WCAG AAA × Fail

Black Background



This preview shows how the Decimal color 12293240 looks on a black background.

Color Contrast Check

Large Text (above 18pt) WCAG AA ✓ Pass

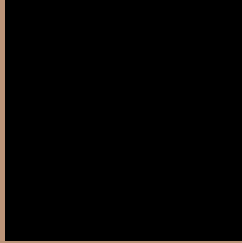
Any Text WCAG AA ✓ Pass

Large Text (above 18pt) WCAG AAA ✓ Pass

Any Text WCAG AAA ✓ Pass

If you want to check with other color combinations, try the [Color Contrast Checker](#).

Decimal 12293240 Background



This preview shows how black text looks on a background with the Decimal color 12293240.



This preview shows how white text looks on a background with the Decimal color 12293240.

Color Blindness Simulation

Color vision deficiency is a very complex topic, and I could not describe the different causes any better than Wikipedia does, so if you want to learn more, you should check out their [article about color blindness](#).


Dichromacy



Original Color
12293240

Protanopia
10919036

Deuteranopia
12031608



Tritanopia
12554138

Trichromacy



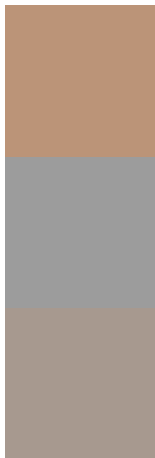
Original Color
12293240

Protanomaly
11442555

Deuteranomaly
12096888

Tritanomaly
12489102

Monochromacy



Original Color
12293240

Achromatopsia
10263708

Achromatomaly
10983823

CSS Examples

Text

The CSS property to change the color of the text to Decimal 12293240 is called "color". The color property can be set on classes, ids or directly on the HTML element.

This example shows how text in the color #BB9478 looks like.

```
.text, #text, p{  
    color:#BB9478  
}
```

If you want to add a text shadow in that color use the text-shadow property, you can generate a text shadow directly with our [CSS Text Shadow Generator](#).

Here you see how black text with a 4 pixel #BB9478 colored shadow looks like.

```
.shadow{ text-shadow: 4px 4px 2px #BB9478
}
```

Border

The CSS property to change the border of an element to Decimal 12293240 is called "border". The border property can be set on classes, ids or directly on the HTML element.

This example shows the color as border, it can be applied via the CSS property "border" or "border-color".

```
.border, #border, table{ border:4px solid
#BB9478 }
```

If only the border color should be changed use the property `border-color`.

```
.border{ border-color:#BB9478 }
```

If you want to add a box shadow in that color use:

Here you see how a box with a 4 pixel #BB9478 colored shadow looks like.

```
.boxshadow{ -moz-box-shadow:4px 4px 4px  
4px #BB9478; -webkit-box-shadow:4px 4px  
4px 4px #BB9478; box-shadow:4px 4px 4px  
4px #BB9478 }
```

Background

The CSS property to change the background color of an element to Decimal 12293240 is called "background". The background property can be set on classes, ids or directly on the HTML element.

```
.background, #background, body{  
background:#BB9478 }
```

If only the background color should be changed can be used:

```
.background{ background-color:#BB9478 }
```

This example shows the color as background, it is applied via the CSS property "background".

To optimize and compress your CSS code, you can use our [online CSS compressor and optimizer](#) based on csstidy. If you want to create a linear or radial gradient as background or border, check our [CSS Gradient Generator](#).

Hey! You found this booklet interesting? Support Converting Colors with the new Membership Option!

The pro membership hides all ads, plus gives you double the colors in the color bucket, and more awesome pro features!

[Learn more, Memberships starting at \\$2.50/m!](#)

**Follow me
on Twitter!**

@ConvertingColor