

Converting Colors

Decimal(12294029)

Have a look what the booklet for
Decimal(12294029) contains.

Decimal(12294029)	3
<i>Conversions</i>	4
<i>Details</i>	6
<i>Harmonies</i>	11
<i>Previews</i>	23
<i>Color Blindness Simulation</i>	26
<i>CSS Examples</i>	29

Color

Decimal(12294029)

Conversions

Conversions Part 1

Format	Color
Hex	BB978D
RGB	187, 151, 141
RGB Percent	73%, 59%, 55%
CMY	0.2667, 0.4078, 0.4471
CMYK	0.00, 0.19, 0.25, 0.27
HSL	13°, 25%, 64%
HSV	13°, 25%, 73%
XYZ	36.3678, 34.6211, 29.9651
YIQ	160.6240, 24.6660, 4.5220

Conversions

Conversions Part 2

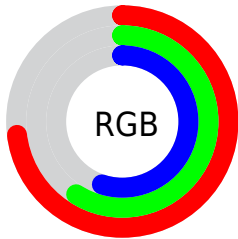
Format	Color
R _Y B	187, 154, 141
Decimal	12294029
CIE Lab	65.45, 11.90, 10.34
CIE LCh	65, 15.769, 40.993
Yxy	34.6211, 0.3602, 0.3429
Android (android.graphics.Color)	4290484109 (0xFFBB978D)
YUV	160.6240, -9.6746, 23.1318
Hunter-Lab	58.8397, 7.3584, 10.9934

Details

The Decimal color **12294029** is a light color, and the websafe version is hex **CC9999**. A complement of this color would be **9286075**, and the grayscale version is **10592673**.

A 20% lighter version of the original color is **16043459**, and **8741979** is the 20% darker color. If you saturate the color by 10%, you get **12290170**, and if you desaturate by 10%, it is **12297888**.

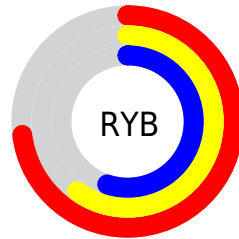
Distribution



Red (73%)

Green (59%)

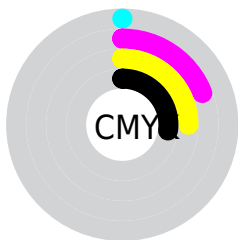
Blue (55%)



Red (73%)

Yellow (60%)

Blue (55%)

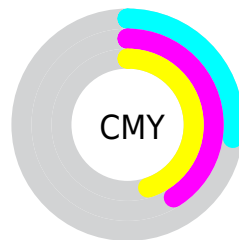


Cyan (0%)

Magenta (19%)

Yellow (25%)

Black (27%)



Cyan (27%)

Magenta (41%)

Yellow (45%)

Brightness & Saturation Gradients

These gradients show how the Decimal color 12294029 changes by changing the brightness by 10 percent. The first figure shows a shift by +10% for each color and the second figure -10%.

Similar to the brightness gradients but the following saturation gradients show a change of the Decimal color 12294029 by changing the saturation by 10% instead.

 12294029

 12294029

16777215

 10517875

 16043459


 8741979

 16771551

 7031875

 16777211

 5387565

 3809305

 2427392

 0

 12294029

 12294029

 12290170

 12297888

 12286568

 12301490

 12282709

 12305349

 12278850

 12309208

 12275248

 12312811

 12271389

 12316669

 12267786

 12320255

 12265728

 12320767

Harmonies

Analogous

The Analogous color harmony consists of three colors that are next to each other on the color wheel.



12359066



12294029



11705221

Triad

The Triadic color harmony groups three colors that are evenly spaced from another and form a triangle on the color wheel.



12294029



8758933



9871034

Complementary

The Complementary color scheme is a pair of colors which are on the opposite of each other on the color wheel.



12294029



9286075

Split Complementary

Split-complementary colors differ from the complementary color scheme. The scheme consists of three colors, the original color and two neighbors of the complement color.



8758201



12294029



8103844

Square

The Square scheme is like the rectangle color scheme, but the four colors are evenly spaced on the color wheel.



12294029



9806985



8103601



11049652

Rectangle

The Rectangle color scheme consists of four colors that form a rectangle on the color wheel.



12294029



11181699



8103601



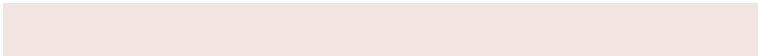
9478331

Sweetspot

The Sweet Spot groups the original color and five complimentary colors.



12294029



15918561



12291505



8024945



16448250



8026746

Same Dimension

The Same Dimension uses a secret algorithm to generate beautiful new colors.



12294029



15907242



12299917



6182741



10363392



2033408

Inverse Universe

The Inverse Universe completely reimagines the original color for something new.



9286075



11199218



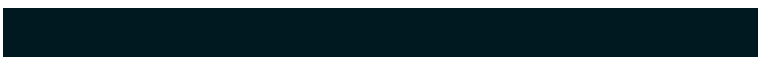
9280187



5594206



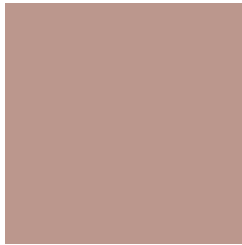
31902



6175

Previews

White Background



This preview shows how the Decimal color 12294029 looks on a white background.

Color Contrast Check

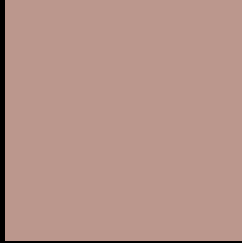
Large Text (above 18pt) WCAG AA × Fail

Any Text WCAG AA × Fail

Large Text (above 18pt) WCAG AAA × Fail

Any Text WCAG AAA × Fail

Black Background



This preview shows how the Decimal color 12294029 looks on a black background.

Color Contrast Check

Large Text (above 18pt) WCAG AA ✓ Pass

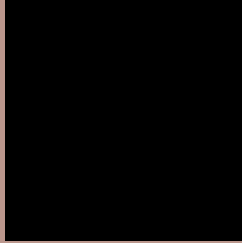
Any Text WCAG AA ✓ Pass

Large Text (above 18pt) WCAG AAA ✓ Pass

Any Text WCAG AAA ✓ Pass

If you want to check with other color combinations, try the [Color Contrast Checker](#).

Decimal 12294029 Background



This preview shows how black text looks on a background with the Decimal color 12294029.



This preview shows how white text looks on a background with the Decimal color 12294029.

Color Blindness Simulation

Color vision deficiency is a very complex topic, and I could not describe the different causes any better than Wikipedia does, so if you want to learn more, you should check out their [article about color blindness](#).


Dichromacy



Original Color
12294029

Protanopia
10854289

Deuteranopia
11901325



Tritanopia
12424352

Trichromacy



Original Color
12294029

Protanomaly
11377808

Deuteranomaly
12032141

Tritanomaly
12359065

Monochromacy



Original Color
12294029

Achromatopsia
10592673

Achromatomaly
11181466

CSS Examples

Text

The CSS property to change the color of the text to Decimal 12294029 is called "color". The color property can be set on classes, ids or directly on the HTML element.

This example shows how text in the color #BB978D looks like.

```
.text, #text, p{  
    color:#BB978D  
}
```

If you want to add a text shadow in that color use the text-shadow property, you can generate a text shadow directly with our [CSS Text Shadow Generator](#).

Here you see how black text with a 4 pixel #BB978D colored shadow looks like.

```
.shadow{ text-shadow: 4px 4px 2px #BB978D
}
```

Border

The CSS property to change the border of an element to Decimal 12294029 is called "border". The border property can be set on classes, ids or directly on the HTML element.

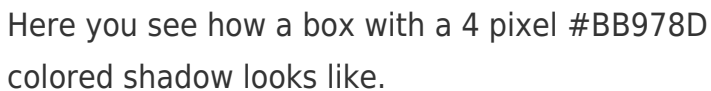
This example shows the color as border, it can be applied via the CSS property "border" or "border-color".

```
.border, #border, table{ border:4px solid
#BB978D }
```

If only the border color should be changed use the property `border-color`.

```
.border{ border-color:#BB978D }
```

If you want to add a box shadow in that color use:



Here you see how a box with a 4 pixel #BB978D colored shadow looks like.

```
.boxshadow{ -moz-box-shadow:4px 4px 4px  
4px #BB978D; -webkit-box-shadow:4px 4px  
4px 4px #BB978D; box-shadow:4px 4px 4px  
4px #BB978D }
```

Background

The CSS property to change the background color of an element to Decimal 12294029 is called "background". The background property can be set on classes, ids or directly on the HTML element.

```
.background, #background, body{  
background:#BB978D }
```

If only the background color should be changed can be used:

```
.background{ background-color:#BB978D }
```

This example shows the color as background, it is applied via the CSS property "background".

To optimize and compress your CSS code, you can use our [online CSS compressor and optimizer](#) based on csstidy. If you want to create a linear or radial gradient as background or border, check our [CSS Gradient Generator](#).

Hey! You found this booklet interesting? Support Converting Colors with the new Membership Option!

The pro membership hides all ads, plus gives you double the colors in the color bucket, and more awesome pro features!

[Learn more, Memberships starting at \\$2.50/m!](#)

**Follow me
on Twitter!**

@ConvertingColor