

# Converting Colors

Decimal(12296342)

Have a look what the booklet for  
Decimal(12296342) contains.

<b>Decimal(12296342)</b> .....	3
<i><b>Conversions</b></i> .....	4
<i><b>Details</b></i> .....	6
<i><b>Harmonies</b></i> .....	11
<i><b>Previews</b></i> .....	23
<i><b>Color Blindness Simulation</b></i> .....	26
<i><b>CSS Examples</b></i> .....	29

# **Color**

**Decimal(12296342)**

# Conversions

## Conversions Part 1

<b>Format</b>	<b>Color</b>
Hex	BBA096
RGB	187, 160, 150
RGB Percent	73%, 63%, 59%
CMY	0.2667, 0.3725, 0.4118
CMYK	0.00, 0.14, 0.20, 0.27
HSL	16°, 21%, 66%
HSV	16°, 20%, 73%
XYZ	38.5693, 37.9084, 34.1384
YIQ	166.9330, 19.3020, 2.6140

# Conversions

## Conversions Part 2

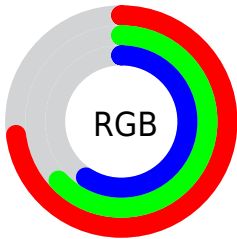
<b>Format</b>	<b>Color</b>
<a href="#">RYB</a>	<a href="#">187, 164, 150</a>
Decimal	<a href="#">12296342</a>
CIELab	<a href="#">67.95, 8.31, 8.88</a>
CIELCh	<a href="#">68, 12.157, 46.901</a>
Yxy	<a href="#">37.9084, 0.3487, 0.3427</a>
Android (android.graphics.Color)	<a href="#">4290486422</a> ( <a href="#">0xFFBBA096</a> )
YUV	<a href="#">166.9330, -8.3480, 17.5988</a>
Hunter-Lab	<a href="#">61.5698, 4.0711, 10.2246</a>

# Details

The Decimal color **12296342** is a light color, and the websafe version is hex **CC9999**. A complement of this color would be **9875899**, and the grayscale version is **10987431**.

A 20% lighter version of the original color is **16046028**, and **8744291** is the 20% darker color. If you saturate the color by 10%, you get **12292739**, and if you desaturate by 10%, it is **12299945**.

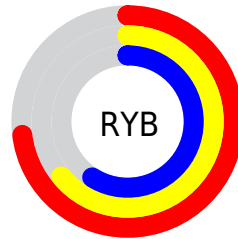
# Distribution



Red (73%)

Green (63%)

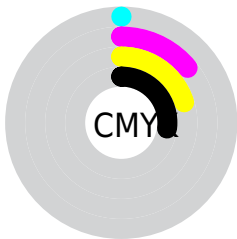
Blue (59%)



Red (73%)

Yellow (64%)

Blue (59%)

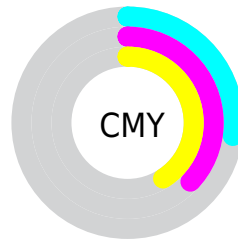


Cyan (0%)

Magenta (14%)

Yellow (20%)

Black (27%)



Cyan (27%)

Magenta (37%)

Yellow (41%)

# Brightness & Saturation Gradients

These gradients show how the Decimal color 12296342 changes by changing the brightness by 10 percent. The first figure shows a shift by +10% for each color and the second figure -10%.

Similar to the brightness gradients but the following saturation gradients show a change of the Decimal color 12296342 by changing the saturation by 10% instead.



 12296342

 12296342

16777215

 10520188

 16046028

 8744291

 16774120

 7099467

 5455157

 3876640

 2495240

 0

 12296342

 12296342

 12292739

 12299945

 12289393

 12303291

 12285790

 12306894

 12282187

 12310497

 12278841

 12313844

 12275238

 12317439

 12271635

 12320767

 12268288

# Harmonies

## Analogous

The Analogous color harmony consists of three colors that are next to each other on the color wheel.



12426912



12296342



11772816

# Triad

The Triadic color harmony groups three colors that are evenly spaced from another and form a triangle on the color wheel.



12296342



9481376



10659002

# Complementary

The Complementary color scheme is a pair of colors which are on the opposite of each other on the color wheel.



12296342



9875899

# Split Complementary

Split-complementary colors differ from the complementary color scheme. The scheme consists of three colors, the original color and two neighbors of the complement color.



9742523



12296342



9088172

# Square

The Square scheme is like the rectangle color scheme, but the four colors are evenly spaced on the color wheel.



12296342



10201750



9218997



11510197

# Rectangle

The Rectangle color scheme consists of four colors that form a rectangle on the color wheel.



12296342



11314832



9218997



10331835

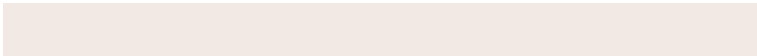


# Sweetspot

The Sweet Spot groups the original color and five complimentary colors.



12296342



15919332



12293809



8025202



16448250



8026746



# Same Dimension

The Same Dimension uses a secret algorithm to generate beautiful new colors.



12296342



15911096



12300950



6182741



10365696



2033664



# Inverse Universe

The Inverse Universe completely reimagines the original color for something new.



9875899



12116978



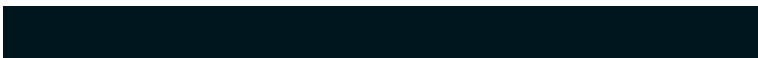
9871291



5594206



29598

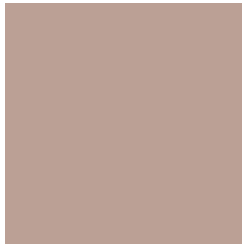


5663



# Previews

## White Background



This preview shows how the Decimal color 12296342 looks on a white background.

## Color Contrast Check

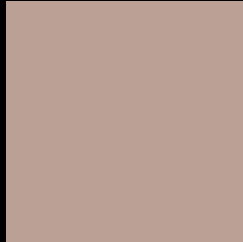
Large Text (above 18pt) WCAG AA × Fail

Any Text WCAG AA × Fail

Large Text (above 18pt) WCAG AAA × Fail

Any Text WCAG AAA × Fail

# Black Background



This preview shows how the Decimal color 12296342 looks on a black background.

## Color Contrast Check

Large Text (above 18pt) WCAG AA ✓ Pass

Any Text WCAG AA ✓ Pass

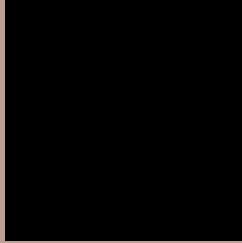
Large Text (above 18pt) WCAG AAA ✓ Pass

Any Text WCAG AAA ✓ Pass

If you want to check with other color combinations, try the [Color Contrast Checker](#).



## Decimal 12296342 Background



This preview shows how black text looks on a background with the Decimal color 12296342.




This preview shows how white text looks on a background with the Decimal color 12296342.

# Color Blindness Simulation

Color vision deficiency is a very complex topic, and I could not describe the different causes any better than Wikipedia does, so if you want to learn more, you should check out their [article about color blindness](#).

## Dichromacy





**Tritanopia**  
12426665

# Trichromacy



**Original Color**  
12296342

**Protanomaly**  
11641752

**Deuteranomaly**  
12296342

**Tritanomaly**  
12361378

# Monochromacy



**Original Color**  
12296342

**Achromatopsia**  
10987431

**Achromatomaly**  
11445409

# CSS Examples

## Text

The CSS property to change the color of the text to Decimal 12296342 is called "color". The color property can be set on classes, ids or directly on the HTML element.

This example shows how text in the color #BBA096 looks like.

```
.text, #text, p{  
    color:#BBA096  
}
```

If you want to add a text shadow in that color use the text-shadow property, you can generate a text shadow directly with our [CSS Text Shadow Generator](#).

Here you see how black text with a 4 pixel #BBA096 colored shadow looks like.

```
.shadow{ text-shadow: 4px 4px 2px #BBA096
}
```

## Border

The CSS property to change the border of an element to Decimal 12296342 is called "border". The border property can be set on classes, ids or directly on the HTML element.

This example shows the color as border, it can be applied via the CSS property "border" or "border-color".

```
.border, #border, table{ border:4px solid
#BBA096 }
```

If only the border color should be changed use the property `border-color`.

```
.border{ border-color:#BBA096 }
```

If you want to add a box shadow in that color use:

Here you see how a box with a 4 pixel #BBA096 colored shadow looks like.

```
.boxshadow{ -moz-box-shadow:4px 4px 4px  
4px #BBA096; -webkit-box-shadow:4px 4px  
4px 4px #BBA096; box-shadow:4px 4px 4px  
4px #BBA096 }
```

# Background

The CSS property to change the background color of an element to Decimal 12296342 is called "background". The background property can be set on classes, ids or directly on the HTML element.

```
.background, #background, body{  
background:#BBA096 }
```

If only the background color should be changed can be used:

```
.background{ background-color:#BBA096 }
```

This example shows the color as background, it is applied via the CSS property "background".

To optimize and compress your CSS code, you can use our [online CSS compressor and optimizer](#) based on csstidy. If you want to create a linear or radial gradient as background or border, check our [CSS Gradient Generator](#).



Hey! You found this booklet interesting? Support Converting Colors with the new Membership Option!

The pro membership hides all ads, plus gives you double the colors in the color bucket, and more awesome pro features!

**[Learn more, Memberships starting at \\$2.50/m!](#)**

**Follow me  
on Twitter!**

@ConvertingColor