

Converting Colors

Decimal(12352630)

Have a look what the booklet for
Decimal(12352630) contains.

Decimal(12352630)	3
<i>Conversions</i>	4
<i>Details</i>	6
<i>Harmonies</i>	11
<i>Previews</i>	23
<i>Color Blindness Simulation</i>	26
<i>CSS Examples</i>	29

Color

Decimal(12352630)

Conversions

Conversions Part 1

Format	Color
Hex	BC7C76
RGB	188, 124, 118
RGB Percent	74%, 49%, 46%
CMY	0.2627, 0.5137, 0.5373
CMYK	0.00, 0.34, 0.37, 0.26
HSL	5°, 34%, 60%
HSV	5°, 37%, 74%
XYZ	31.2167, 26.4147, 20.5928
YIQ	142.4520, 40.0700, 11.7020

Conversions

Conversions Part 2

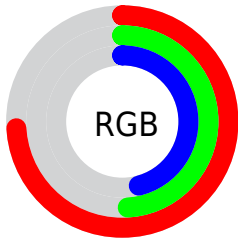
Format	Color
R _Y B	188, 125, 118
Decimal	12352630
CIE Lab	58.43, 24.16, 13.52
CIE LCh	58, 27.688, 29.237
Yxy	26.4147, 0.3991, 0.3377
Android (android.graphics.Color)	4290542710 (0xFFBC7C76)
YUV	142.4520, -12.0548, 39.9456
Hunter-Lab	51.3952, 18.4767, 12.2206

Details

The Decimal color **12352630** is a dark color, and the websafe version is hex **996666**. A complement of this color would be **7780028**, and the grayscale version is **9408399**.

A 20% lighter version of the original color is **16167338**, and **8735302** is the 20% darker color. If you saturate the color by 10%, you get **12348259**, and if you desaturate by 10%, it is **12357001**.

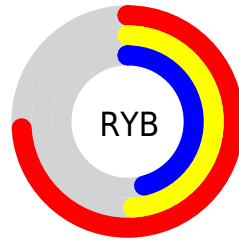
Distribution



Red (74%)

Green (49%)

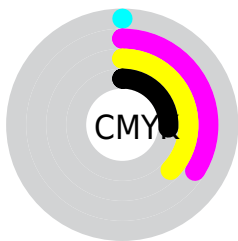
Blue (46%)



Red (74%)

Yellow (49%)

Blue (46%)

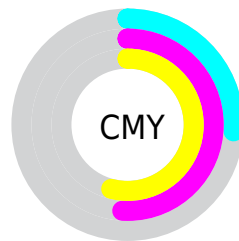


Cyan (0%)

Magenta (34%)

Yellow (37%)

Black (26%)



Cyan (26%)

Magenta (51%)

Yellow (54%)

Brightness & Saturation Gradients

These gradients show how the Decimal color 12352630 changes by changing the brightness by 10 percent. The first figure shows a shift by +10% for each color and the second figure -10%.


Similar to the brightness gradients but the following saturation gradients show a change of the Decimal color 12352630 by changing the saturation by 10% instead.

 12352630

 12352630

16777215

 10511197

 16167338

 8735302

 16764357

 6959919

 16771553

 5250075

16777214

 3605760

 2031617

 0

 12352630

 12352630

 12348259

 12357001

 12343888

 12361372

 12339262

 12365998

 12334891

 12370369

 12330520

 12374740

 12326149

 12379111

 12324864

 12383482

 12386303

Harmonies

Analogous

The Analogous color harmony consists of three colors that are next to each other on the color wheel.



12221070



12352630



11698788

Triad

The Triadic color harmony groups three colors that are evenly spaced from another and form a triangle on the color wheel.



12352630



6854515



7049149

Complementary

The Complementary color scheme is a pair of colors which are on the opposite of each other on the color wheel.



12352630



7780028

Split Complementary

Split-complementary colors differ from the complementary color scheme. The scheme consists of three colors, the original color and two neighbors of the complement color.



4757173



12352630



5020299

Square

The Square scheme is like the rectangle color scheme, but the four colors are evenly spaced on the color wheel.



12352630



8688226



3905955



9406135

Rectangle

The Rectangle color scheme consists of four colors that form a rectangle on the color wheel.



12352630



10848349



3905955



6263228

Sweetspot

The Sweet Spot groups the original color and five complimentary colors.



12352630



16112858



12351158



8023146



16448250



8026746

Same Dimension

The Same Dimension uses a secret algorithm to generate beautiful new colors.



12352630



16093319



12361590



6182485



10358272



2032384

Inverse Universe

The Inverse Universe completely reimagines the original color for something new.



7780028



8907765



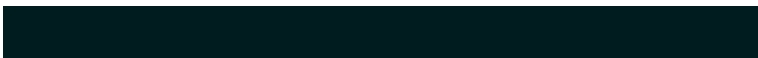
7771068



5594718



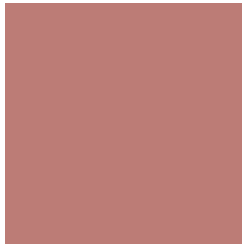
37278



7199

Previews

White Background



This preview shows how the Decimal color 12352630 looks on a white background.

Color Contrast Check

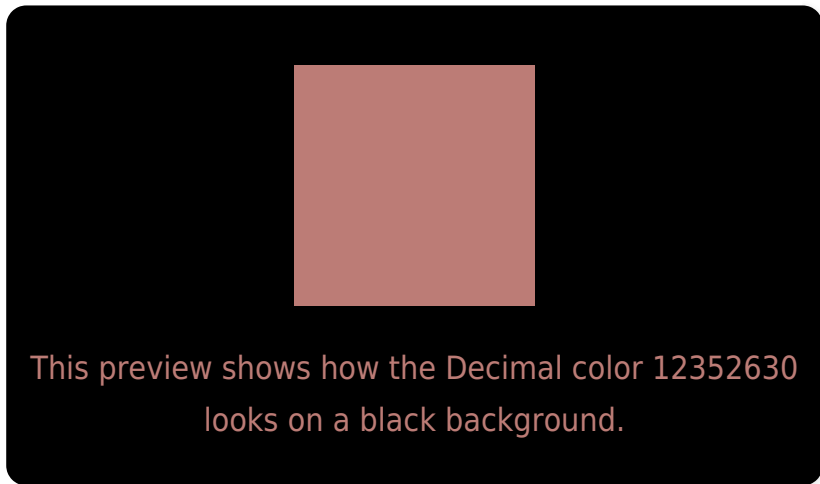
Large Text (above 18pt) WCAG AA ✓ Pass

Any Text WCAG AA × Fail

Large Text (above 18pt) WCAG AAA × Fail

Any Text WCAG AAA × Fail

Black Background



Color Contrast Check

Large Text (above 18pt) WCAG AA ✓ Pass

Any Text WCAG AA ✓ Pass

Large Text (above 18pt) WCAG AAA ✓ Pass

Any Text WCAG AAA × Fail

If you want to check with other color combinations, try the [Color Contrast Checker](#).

Decimal 12352630 Background



This preview shows how black text looks on a background with the Decimal color 12352630.



This preview shows how white text looks on a background with the Decimal color 12352630.

Color Blindness Simulation

Color vision deficiency is a very complex topic, and I could not describe the different causes any better than Wikipedia does, so if you want to learn more, you should check out their [article about color blindness](#).

Dichromacy



Original Color
12352630

Protanopia
9669758

Deuteranopia
10717044



Tritanopia
12417667

Trichromacy



Original Color
12352630

Protanomaly
10651259

Deuteranomaly
11305845

Tritanomaly
12417918

Monochromacy



Original Color
12352630

Achromatopsia
9342606

Achromatomaly
10454917

CSS Examples

Text

The CSS property to change the color of the text to Decimal 12352630 is called "color". The color property can be set on classes, ids or directly on the HTML element.

This example shows how text in the color #BC7C76 looks like.

```
.text, #text, p{  
    color:#BC7C76  
}
```

If you want to add a text shadow in that color use the text-shadow property, you can generate a text shadow directly with our [CSS Text Shadow Generator](#).

Here you see how black text with a 4 pixel #BC7C76 colored shadow looks like.

```
.shadow{ text-shadow: 4px 4px 2px #BC7C76
}
```

Border

The CSS property to change the border of an element to Decimal 12352630 is called "border". The border property can be set on classes, ids or directly on the HTML element.

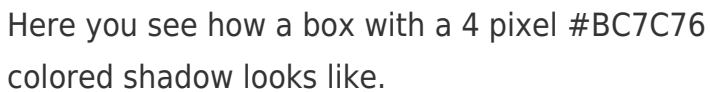
This example shows the color as border, it can be applied via the CSS property "border" or "border-color".

```
.border, #border, table{ border:4px solid
#BC7C76 }
```

If only the border color should be changed use the property `border-color`.

```
.border{ border-color:#BC7C76 }
```

If you want to add a box shadow in that color use:



Here you see how a box with a 4 pixel #BC7C76 colored shadow looks like.

```
.boxshadow{ -moz-box-shadow:4px 4px 4px  
4px #BC7C76; -webkit-box-shadow:4px 4px  
4px 4px #BC7C76; box-shadow:4px 4px 4px  
4px #BC7C76 }
```

Background

The CSS property to change the background color of an element to Hexadecimal #BC7C76 is called "background". The background property can be set on classes, ids or directly on the HTML element.

```
.background, #background, body{  
background:#BC7C76 }
```

If only the background color should be changed can be used:

```
.background{ background-color:#BC7C76 }
```

This example shows the color as background, it is applied via the CSS property "background".

To optimize and compress your CSS code, you can use our [online CSS compressor and optimizer](#) based on csstidy. If you want to create a linear or radial gradient as background or border, check our [CSS Gradient Generator](#).

Hey! You found this booklet interesting? Support Converting Colors with the new Membership Option!

The pro membership hides all ads, plus gives you double the colors in the color bucket, and more awesome pro features!

[Learn more, Memberships starting at \\$2.50/m!](#)

**Follow me
on Twitter!**

@ConvertingColor