

Converting Colors

Decimal(12360038)

Have a look what the booklet for
Decimal(12360038) contains.

Decimal(12360038)	3
<i>Conversions</i>	4
<i>Details</i>	6
<i>Harmonies</i>	11
<i>Previews</i>	23
<i>Color Blindness Simulation</i>	26
<i>CSS Examples</i>	29

Color

Decimal(12360038)

Conversions

Conversions Part 1

Format	Color
Hex	BC9966
RGB	188, 153, 102
RGB Percent	74%, 60%, 40%
CMY	0.2627, 0.4000, 0.6000
CMYK	0.00, 0.19, 0.46, 0.26
HSL	36°, 39%, 57%
HSV	36°, 46%, 74%
XYZ	34.5285, 34.4331, 17.3968
YIQ	157.6510, 37.2310, -8.4410

Conversions

Conversions Part 2

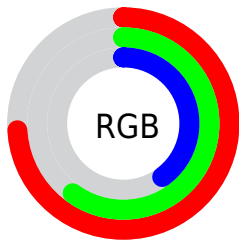
Format	Color
RYB	161, 188, 102
Decimal	12360038
CIELab	65.30, 6.31, 31.66
CIELCh	65, 32.279, 78.720
Yxy	34.4331, 0.3998, 0.3987
Android (android.graphics.Color)	4290550118 (0xFFBC9966)
YUV	157.6510, -27.4359, 26.6161
Hunter-Lab	58.6798, 2.3440, 23.4981

Details

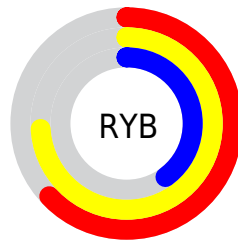
The Decimal color **12360038** is a dark color, and the websafe version is hex **CC9966**. A complement of this color would be **6719932**, and the grayscale version is **10395294**.

A 20% lighter version of the original color is **16175002**, and **8742454** is the 20% darker color. If you saturate the color by 10%, you get **12357971**, and if you desaturate by 10%, it is **12362105**.

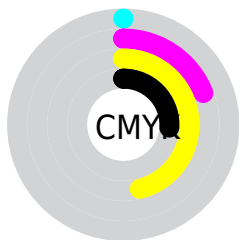
Distribution



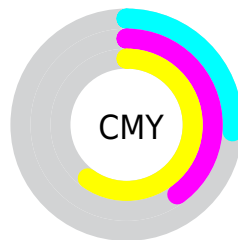
- Red (74%)
- Green (60%)
- Blue (40%)



- Red (63%)
- Yellow (74%)
- Blue (40%)



- Cyan (0%)
- Magenta (19%)
- Yellow (46%)
- Black (26%)



- Cyan (26%)
- Magenta (40%)
- Yellow (60%)

Brightness & Saturation Gradients

These gradients show how the Decimal color 12360038 changes by changing the brightness by 10 percent. The first figure shows a shift by +10% for each color and the second figure -10%.


Similar to the brightness gradients but the following saturation gradients show a change of the Decimal color 12360038 by changing the saturation by 10% instead.

 12360038

 12360038

16777215

 10518349

 16175002

 8742454

 16772021

 6966815

 16777168

 5257224

 16777197

 3678720

 2034944

 0

 12360038

 12360038

 12357971

 12362105

■ 12356160

■ 12363916

■ 12354094

■ 12365982

■ 12352027

■ 12368049

■ 12350216

■ 12369860

■ 12349184

■ 12371927

■ 12373994

■ 12375804

■ 12377855

Harmonies

Analogous

The Analogous color harmony consists of three colors that are next to each other on the color wheel.



13668212



12360038



10527335

Triad

The Triadic color harmony groups three colors that are evenly spaced from another and form a triangle on the color wheel.



12360038



3976880



12095941

Complementary

The Complementary color scheme is a pair of colors which are on the opposite of each other on the color wheel.



12360038



6719932

Split Complementary

Split-complementary colors differ from the complementary color scheme. The scheme consists of three colors, the original color and two neighbors of the complement color.



9673685



12360038



4107209

Square

The Square scheme is like the rectangle color scheme, but the four colors are evenly spaced on the color wheel.



12360038



6074002



6661591



13666987

Rectangle

The Rectangle color scheme consists of four colors that form a rectangle on the color wheel.



12360038



9087089



6661591



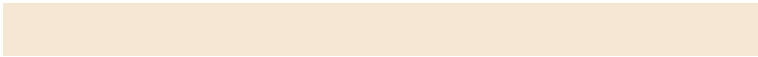
11375820

Sweetspot

The Sweet Spot groups the original color and five complimentary colors.



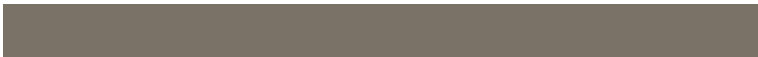
12360038



16115667



12347018



8024678



16448250



8026746

Same Dimension

The Same Dimension uses a secret algorithm to generate beautiful new colors.



12360038



16105070



11910246



6183765



10378752



2036224

Inverse Universe

The Inverse Universe completely reimagines the original color for something new.



6719932



7251445



7169724



5593438



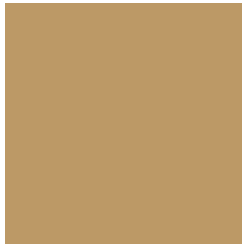
16542



3103

Previews

White Background



This preview shows how the Decimal color 12360038 looks on a white background.

Color Contrast Check

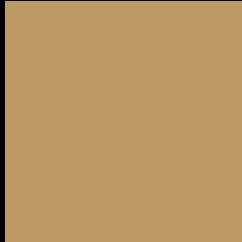
Large Text (above 18pt) WCAG AA × Fail

Any Text WCAG AA × Fail

Large Text (above 18pt) WCAG AAA × Fail

Any Text WCAG AAA × Fail

Black Background



This preview shows how the Decimal color 12360038 looks on a black background.

Color Contrast Check

Large Text (above 18pt) WCAG AA ✓ Pass

Any Text WCAG AA ✓ Pass

Large Text (above 18pt) WCAG AAA ✓ Pass

Any Text WCAG AAA ✓ Pass

If you want to check with other color combinations, try the [Color Contrast Checker](#).

Decimal 12360038 Background



This preview shows how black text looks on a background with the Decimal color 12360038.



This preview shows how white text looks on a background with the Decimal color 12360038.

Color Blindness Simulation

Color vision deficiency is a very complex topic, and I could not describe the different causes any better than Wikipedia does, so if you want to learn more, you should check out their [article about color blindness](#).


Dichromacy



Original Color
12360038

Protanopia
11313000

Deuteranopia
12556390



Tritanopia
12685981

Trichromacy



Original Color
12360038

Protanomaly
11705703

Deuteranomaly
12490854

Tritanomaly
12555657

Monochromacy



Original Color
12360038

Achromatopsia
10395294

Achromatomaly
11115658

CSS Examples

Text

The CSS property to change the color of the text to Decimal 12360038 is called "color". The color property can be set on classes, ids or directly on the HTML element.

This example shows how text in the color #BC9966 looks like.

```
.text, #text, p{  
  color:#BC9966  
}
```

If you want to add a text shadow in that color use the text-shadow property, you can generate a text shadow directly with our [CSS Text Shadow Generator](#).

Here you see how black text with a 4 pixel #BC9966 colored shadow looks like.

```
.shadow{ text-shadow: 4px 4px 2px #BC9966  
}
```

Border

The CSS property to change the border of an element to Decimal 12360038 is called "border". The border property can be set on classes, ids or directly on the HTML element.

This example shows the color as border, it can be applied via the CSS property "border" or "border-color".

```
.border, #border, table{ border:4px solid  
#BC9966 }
```

If only the border color should be changed use the property `border-color`.

```
.border{ border-color:#BC9966 }
```

If you want to add a box shadow in that color use:

Here you see how a box with a 4 pixel #BC9966 colored shadow looks like.

```
.boxshadow{ -moz-box-shadow:4px 4px 4px  
4px #BC9966; -webkit-box-shadow:4px 4px  
4px 4px #BC9966; box-shadow:4px 4px 4px  
4px #BC9966 }
```

Background

The CSS property to change the background color of an element to Decimal 12360038 is called "background". The background property can be set on classes, ids or directly on the HTML element.

```
.background, #background, body{  
background:#BC9966 }
```

If only the background color should be changed can be used:

```
.background{ background-color:#BC9966 }
```

This example shows the color as background, it is applied via the CSS property "background".

To optimize and compress your CSS code, you can use our [online CSS compressor and optimizer](#) based on csstidy. If you want to create a linear or radial gradient as background or border, check our [CSS Gradient Generator](#).

Hey! You found this booklet interesting? Support Converting Colors with the new Membership Option!

The pro membership hides all ads, plus gives you double the colors in the color bucket, and more awesome pro features!

[Learn more, Memberships starting at \\$2.50/m!](#)

**Follow me
on Twitter!**

@ConvertingColor