

Converting Colors

Decimal(12360087)

Have a look what the booklet for
Decimal(12360087) contains.

Decimal(12360087)	3
<i>Conversions</i>	4
<i>Details</i>	6
<i>Harmonies</i>	11
<i>Previews</i>	23
<i>Color Blindness Simulation</i>	26
<i>CSS Examples</i>	29

Color

Decimal(12360087)

Conversions

Conversions Part 1

Format	Color
Hex	BC9997
RGB	188, 153, 151
RGB Percent	74%, 60%, 59%
CMY	0.2627, 0.4000, 0.4078
CMYK	0.00, 0.19, 0.20, 0.26
HSL	3°, 22%, 66%
HSV	3°, 20%, 74%
XYZ	37.7162, 35.7082, 34.1827
YIQ	163.2370, 21.5020, 6.7980

Conversions

Conversions Part 2

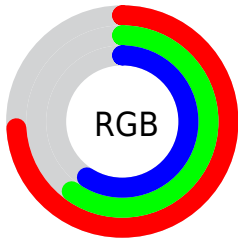
Format	Color
RYB	188, 153, 151
Decimal	12360087
CIELab	66.30, 12.70, 5.96
CIElCh	66, 14.027, 25.150
Yxy	35.7082, 0.3505, 0.3318
Android (android.graphics.Color)	4290550167 (0xFFBC9997)
YUV	163.2370, -6.0328, 21.7172
Hunter-Lab	59.7563, 8.0896, 7.9135

Details

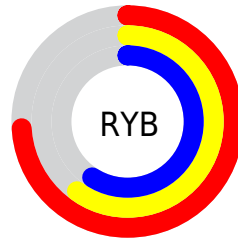
The Decimal color **12360087** is a light color, and the websafe version is hex **CC9999**. A complement of this color would be **9943740**, and the grayscale version is **10724259**.

A 20% lighter version of the original color is **16109517**, and **8808036** is the 20% darker color. If you saturate the color by 10%, you get **12355460**, and if you desaturate by 10%, it is **12364714**.

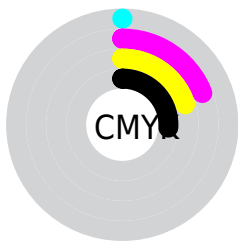
Distribution



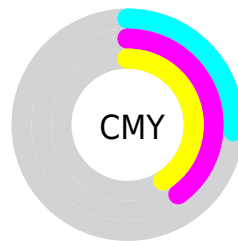
- Red (74%)
- Green (60%)
- Blue (59%)



- Red (74%)
- Yellow (60%)
- Blue (59%)



- Cyan (0%)
- Magenta (19%)
- Yellow (20%)
- Black (26%)



- Cyan (26%)
- Magenta (40%)
- Yellow (41%)

Brightness & Saturation Gradients

These gradients show how the Decimal color 12360087 changes by changing the brightness by 10 percent. The first figure shows a shift by +10% for each color and the second figure -10%.

Similar to the brightness gradients but the following saturation gradients show a change of the Decimal color 12360087 by changing the saturation by 10% instead.

 12360087

 12360087

16777215

 10583933

 16109517

 8808036

 16772329

 7097932

 5519158

 3940640

 2493449

 0

 12360087

 12360087

 12355460

 12364714

 12350833

 12369341

 12346463

 12373711

 12341836

 12378338

 12337209

 12382965

 12332582

 12386303

 12328211

 12323585

 12323328

Harmonies

Analogous

The Analogous color harmony consists of three colors that are next to each other on the color wheel.



12163492



12360087



12098701

Triad

The Triadic color harmony groups three colors that are evenly spaced from another and form a triangle on the color wheel.



12360087



9545618



9544634

Complementary

The Complementary color scheme is a pair of colors which are on the opposite of each other on the color wheel.



12360087



9943740

Split Complementary

Split-complementary colors differ from the complementary color scheme. The scheme consists of three colors, the original color and two neighbors of the complement color.



8758965



12360087



8824991

Square

The Square scheme is like the rectangle color scheme, but the four colors are evenly spaced on the color wheel.



12360087



10527882



8431787



10592184

Rectangle

The Rectangle color scheme consists of four colors that form a rectangle on the color wheel.



12360087



11640457



8431787



9217209

Sweetspot

The Sweet Spot groups the original color and five complimentary colors.



12360087



16115686



12359610



8024690



16448250



8026746

Same Dimension

The Same Dimension uses a secret algorithm to generate beautiful new colors.



12360087



16104890



12364695



6182229



10356992



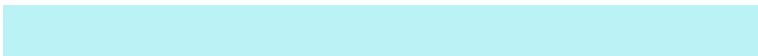
2032128

Inverse Universe

The Inverse Universe completely reimagines the original color for something new.



9943740



12251893



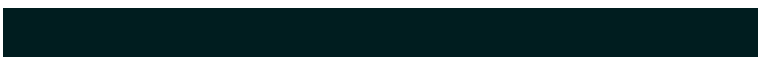
9939132



5594718



38558



7455

Previews

White Background



This preview shows how the Decimal color 12360087 looks on a white background.

Color Contrast Check

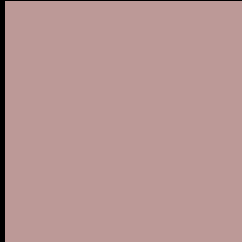
Large Text (above 18pt) WCAG AA × Fail

Any Text WCAG AA × Fail

Large Text (above 18pt) WCAG AAA × Fail

Any Text WCAG AAA × Fail

Black Background



This preview shows how the Decimal color 12360087 looks on a black background.

Color Contrast Check

Large Text (above 18pt) WCAG AA ✓ Pass

Any Text WCAG AA ✓ Pass

Large Text (above 18pt) WCAG AAA ✓ Pass

Any Text WCAG AAA ✓ Pass

If you want to check with other color combinations, try the [Color Contrast Checker](#).

Decimal 12360087 Background



This preview shows how black text looks on a background with the Decimal color 12360087.



This preview shows how white text looks on a background with the Decimal color 12360087.

Color Blindness Simulation

Color vision deficiency is a very complex topic, and I could not describe the different causes any better than Wikipedia does, so if you want to learn more, you should check out their [article about color blindness](#).


Dichromacy



Original Color
12360087

Protanopia
10920347

Deuteranopia
11902102



Tritanopia
12425123

Trichromacy



Original Color
12360087

Protanomaly
11443866

Deuteranomaly
12098454

Tritanomaly
12425375

Monochromacy



Original Color
12360087

Achromatopsia
10724259

Achromatomaly
11313055

CSS Examples

Text

The CSS property to change the color of the text to Decimal 12360087 is called "color". The color property can be set on classes, ids or directly on the HTML element.

This example shows how text in the color #BC9997 looks like.

```
.text, #text, p{  
  color:#BC9997  
}
```

If you want to add a text shadow in that color use the text-shadow property, you can generate a text shadow directly with our [CSS Text Shadow Generator](#).

Here you see how black text with a 4 pixel #BC9997 colored shadow looks like.

```
.shadow{ text-shadow: 4px 4px 2px #BC9997
}
```

Border

The CSS property to change the border of an element to Decimal 12360087 is called "border". The border property can be set on classes, ids or directly on the HTML element.

This example shows the color as border, it can be applied via the CSS property "border" or "border-color".

```
.border, #border, table{ border:4px solid
#BC9997 }
```

If only the border color should be changed use the property border-color.

```
.border{ border-color:#BC9997 }
```

If you want to add a box shadow in that color use:

Here you see how a box with a 4 pixel #BC9997 colored shadow looks like.

```
.boxshadow{ -moz-box-shadow:4px 4px 4px  
4px #BC9997; -webkit-box-shadow:4px 4px  
4px 4px #BC9997; box-shadow:4px 4px 4px  
4px #BC9997 }
```

Background

The CSS property to change the background color of an element to Decimal 12360087 is called "background". The background property can be set on classes, ids or directly on the HTML element.

```
.background, #background, body{  
background:#BC9997 }
```

If only the background color should be changed can be used:

```
.background{ background-color:#BC9997 }
```

This example shows the color as background, it is applied via the CSS property "background".

To optimize and compress your CSS code, you can use our [online CSS compressor and optimizer](#) based on csstidy. If you want to create a linear or radial gradient as background or border, check our [CSS Gradient Generator](#).

Hey! You found this booklet interesting? Support Converting Colors with the new Membership Option!

The pro membership hides all ads, plus gives you double the colors in the color bucket, and more awesome pro features!

[Learn more, Memberships starting at \\$2.50/m!](#)

**Follow me
on Twitter!**

@ConvertingColor