

Converting Colors

Decimal(12360313)

Have a look what the booklet for
Decimal(12360313) contains.

| | |
|--|----|
| Decimal(12360313) | 3 |
| <i>Conversions</i> | 4 |
| <i>Details</i> | 6 |
| <i>Harmonies</i> | 11 |
| <i>Previews</i> | 23 |
| <i>Color Blindness Simulation</i> | 26 |
| <i>CSS Examples</i> | 29 |

Color

Decimal(12360313)

Conversions

Conversions Part 1

| Format | Color |
|-------------|----------------------------|
| Hex | BC9A79 |
| RGB | 188, 154, 121 |
| RGB Percent | 74%, 60%, 47% |
| CMY | 0.2627, 0.3961, 0.5255 |
| CMYK | 0.00, 0.18, 0.36, 0.26 |
| HSL | 30°, 33%, 61% |
| HSV | 30°, 36%, 74% |
| XYZ | 35.7458, 35.1830, 22.9962 |
| YIQ | 160.4040, 30.8570, -3.0550 |

Conversions

Conversions Part 2

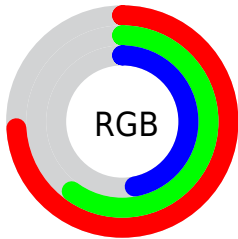
| Format | Color |
|-------------------------------------|--------------------------------|
| RYB | 188, 186, 121 |
| Decimal | 12360313 |
| CIELab | 65.89, 7.93, 22.09 |
| CIELCh | 66, 23.468, 70.245 |
| Yxy | 35.1830, 0.3806, 0.3746 |
| Android (android.graphics.Color) | 4290550393 (0xFFBC9A79) |
| YUV | 160.4040, -19.4262, 24.2017 |
| Hunter-Lab | 59.3153, 3.7696, 18.5344 |

Details

The Decimal color **12360313** is a light color, and the websafe version is hex **CC9966**. A complement of this color would be **7969724**, and the grayscale version is **10592673**.

A 20% lighter version of the original color is **16109742**, and **8742728** is the 20% darker color. If you saturate the color by 10%, you get **12357734**, and if you desaturate by 10%, it is **12362892**.

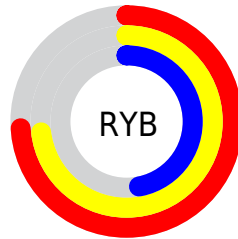
Distribution



Red (74%)

Green (60%)

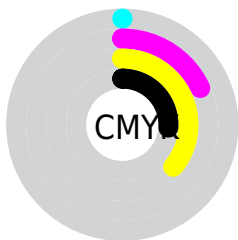
Blue (47%)



Red (74%)

Yellow (73%)

Blue (47%)

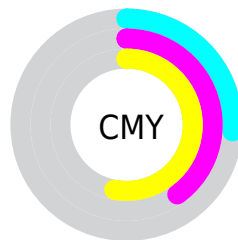


Cyan (0%)

Magenta (18%)

Yellow (36%)

Black (26%)



Cyan (26%)

Magenta (40%)

Yellow (53%)

Brightness & Saturation Gradients

These gradients show how the Decimal color 12360313 changes by changing the brightness by 10 percent. The first figure shows a shift by +10% for each color and the second figure -10%.

Similar to the brightness gradients but the following saturation gradients show a change of the Decimal color 12360313 by changing the saturation by 10% instead.

 12360313

 12360313

16777215

 10518624

 16109742

 8742728

 16772553

 7032625

 16777189

 5388316

 3810051

 2231808

 0

 12360313

 12360313

 12357734

 12362892

 12355411

 12365215

 12352833

 12367793

 12350510

 12370116

 12347931

 12372695

 12345608

 12375018

 12344576

 12377597

 12379903

 12382463

Harmonies

Analogous

The Analogous color harmony consists of three colors that are next to each other on the color wheel.



13145222



12360313



11051383

Triad

The Triadic color harmony groups three colors that are evenly spaced from another and form a triangle on the color wheel.



12360313



6794407



11376832

Complementary

The Complementary color scheme is a pair of colors which are on the opposite of each other on the color wheel.



12360313



7969724

Split Complementary

Split-complementary colors differ from the complementary color scheme. The scheme consists of three colors, the original color and two neighbors of the complement color.



9478345



12360313



6597307

Square

The Square scheme is like the rectangle color scheme, but the four colors are evenly spaced on the color wheel.



12360313



7973777



7644871



12686255

Rectangle

The Rectangle color scheme consists of four colors that form a rectangle on the color wheel.



12360313



10069371



7644871



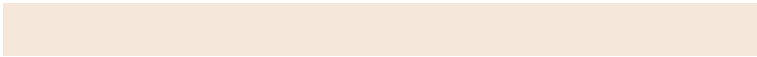
10787780

Sweetspot

The Sweet Spot groups the original color and five complimentary colors.



12360313



16115674



12351900



8024682



16448250



8026746

Same Dimension

The Same Dimension uses a secret algorithm to generate beautiful new colors.



12360313



16105356



12368761



6183509



10374656



2035456

Inverse Universe

The Inverse Universe completely reimagines the original color for something new.



7969724



9224693



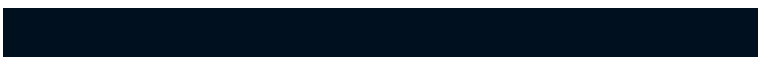
7961276



5593694



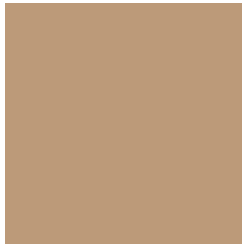
20638



4127

Previews

White Background



This preview shows how the Decimal color 12360313 looks on a white background.

Color Contrast Check

Large Text (above 18pt) WCAG AA × Fail

Any Text WCAG AA × Fail

Large Text (above 18pt) WCAG AAA × Fail

Any Text WCAG AAA × Fail

Black Background



This preview shows how the Decimal color 12360313 looks on a black background.

Color Contrast Check

Large Text (above 18pt) WCAG AA ✓ Pass

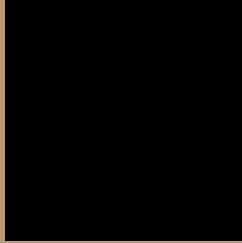
Any Text WCAG AA ✓ Pass

Large Text (above 18pt) WCAG AAA ✓ Pass

Any Text WCAG AAA ✓ Pass

If you want to check with other color combinations, try the [Color Contrast Checker](#).

Decimal 12360313 Background



This preview shows how black text looks on a background with the Decimal color 12360313.



This preview shows how white text looks on a background with the Decimal color 12360313.

Color Blindness Simulation

Color vision deficiency is a very complex topic, and I could not describe the different causes any better than Wikipedia does, so if you want to learn more, you should check out their [article about color blindness](#).

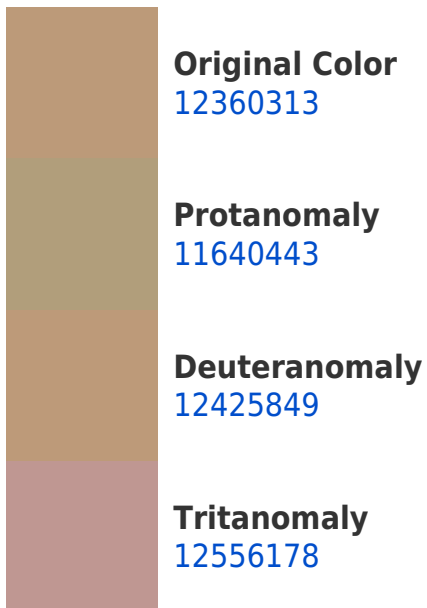
Dichromacy



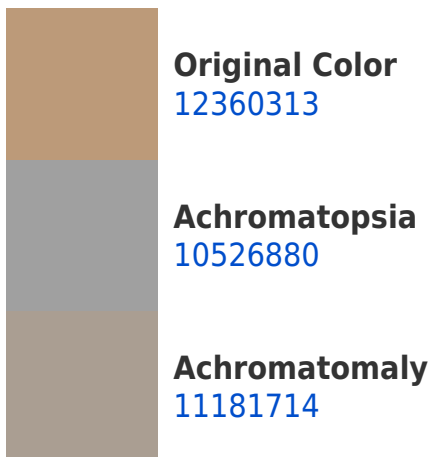


Tritanopia
12621216

Trichromacy



Monochromacy



CSS Examples

Text

The CSS property to change the color of the text to Decimal 12360313 is called "color". The color property can be set on classes, ids or directly on the HTML element.

This example shows how text in the color #BC9A79 looks like.

```
.text, #text, p{  
    color:#BC9A79  
}
```

If you want to add a text shadow in that color use the text-shadow property, you can generate a text shadow directly with our [CSS Text Shadow Generator](#).

Here you see how black text with a 4 pixel #BC9A79 colored shadow looks like.

```
.shadow{ text-shadow: 4px 4px 2px #BC9A79
}
```

Border

The CSS property to change the border of an element to Decimal 12360313 is called "border". The border property can be set on classes, ids or directly on the HTML element.

This example shows the color as border, it can be applied via the CSS property "border" or "border-color".

```
.border, #border, table{ border:4px solid
#BC9A79 }
```

If only the border color should be changed use the property `border-color`.

```
.border{ border-color:#BC9A79 }
```

If you want to add a box shadow in that color use:

Here you see how a box with a 4 pixel #BC9A79 colored shadow looks like.

```
.boxshadow{ -moz-box-shadow:4px 4px 4px  
4px #BC9A79; -webkit-box-shadow:4px 4px  
4px 4px #BC9A79; box-shadow:4px 4px 4px  
4px #BC9A79 }
```

Background

The CSS property to change the background color of an element to Decimal 12360313 is called "background". The background property can be set on classes, ids or directly on the HTML element.

```
.background, #background, body{  
background:#BC9A79 }
```

If only the background color should be changed can be used:

```
.background{ background-color:#BC9A79 }
```

This example shows the color as background, it is applied via the CSS property "background".

To optimize and compress your CSS code, you can use our [online CSS compressor and optimizer](#) based on csstidy. If you want to create a linear or radial gradient as background or border, check our [CSS Gradient Generator](#).

Hey! You found this booklet interesting? Support Converting Colors with the new Membership Option!

The pro membership hides all ads, plus gives you double the colors in the color bucket, and more awesome pro features!

[Learn more, Memberships starting at \\$2.50/m!](#)

**Follow me
on Twitter!**

@ConvertingColor