

Converting Colors

Decimal(12361101)

Have a look what the booklet for
Decimal(12361101) contains.

Decimal(12361101)	3
<i>Conversions</i>	4
<i>Details</i>	6
<i>Harmonies</i>	11
<i>Previews</i>	23
<i>Color Blindness Simulation</i>	26
<i>CSS Examples</i>	29

Color

Decimal(12361101)

Conversions

Conversions Part 1

Format	Color
Hex	BC9D8D
RGB	188, 157, 141
RGB Percent	74%, 62%, 55%
CMY	0.2627, 0.3843, 0.4471
CMYK	0.00, 0.16, 0.25, 0.26
HSL	20°, 26%, 65%
HSV	20°, 25%, 74%
XYZ	37.6037, 36.7284, 30.3067
YIQ	164.4450, 23.6120, 1.5960

Conversions

Conversions Part 2

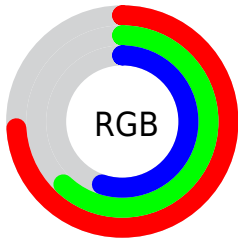
Format	Color
R _{YB}	188, 165, 141
Decimal	12361101
CIE Lab	67.07, 8.99, 12.65
CIE LCh	67, 15.512, 54.603
Yxy	36.7284, 0.3594, 0.3510
Android (android.graphics.Color)	4290551181 (0xFFBC9D8D)
YUV	164.4450, -11.5584, 20.6577
Hunter-Lab	60.6040, 4.6993, 12.7732

Details

The Decimal color **12361101** is a light color, and the websafe version is hex **CC9999**. A complement of this color would be **9284796**, and the grayscale version is **10855845**.

A 20% lighter version of the original color is **16110787**, and **8809051** is the 20% darker color. If you saturate the color by 10%, you get **12358010**, and if you desaturate by 10%, it is **12364192**.

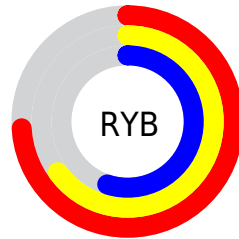
Distribution



Red (74%)

Green (62%)

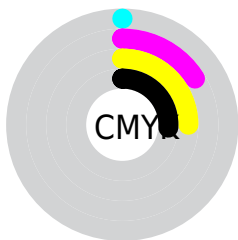
Blue (55%)



Red (74%)

Yellow (65%)

Blue (55%)

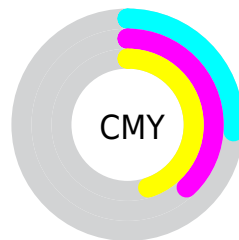


Cyan (0%)

Magenta (16%)

Yellow (25%)

Black (26%)



Cyan (26%)

Magenta (38%)

Yellow (45%)

Brightness & Saturation Gradients

These gradients show how the Decimal color 12361101 changes by changing the brightness by 10 percent. The first figure shows a shift by +10% for each color and the second figure -10%.

Similar to the brightness gradients but the following saturation gradients show a change of the Decimal color 12361101 by changing the saturation by 10% instead.

 12361101

 12361101

16777215

 10584947

 16110787

 8809051

 16773343

 7098947

 16777211

 5454637

 3876120

 2494464

 0

 12361101

 12361101

 12358010

 12364192

 12354663

 12367539

 12351573

 12370629

 12348226

 12373976

 12345135

 12377067

 12342044

 12380158

 12338697

 12383487

 12337152

 12386303

Harmonies

Analogous

The Analogous color harmony consists of three colors that are next to each other on the color wheel.



12688024



12361101



11641224

Triad

The Triadic color harmony groups three colors that are evenly spaced from another and form a triangle on the color wheel.



12361101



8760224



10723772

Complementary

The Complementary color scheme is a pair of colors which are on the opposite of each other on the color wheel.



12361101



9284796

Split Complementary

Split-complementary colors differ from the complementary color scheme. The scheme consists of three colors, the original color and two neighbors of the complement color.



9545151



12361101



8367022

Square

The Square scheme is like the rectangle color scheme, but the four colors are evenly spaced on the color wheel.



12361101



9611667



8628665



11771060

Rectangle

The Rectangle color scheme consists of four colors that form a rectangle on the color wheel.



12361101



10986632



8628665



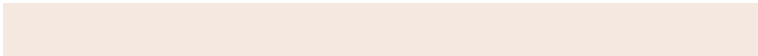
10330814

Sweetspot

The Sweet Spot groups the original color and five complimentary colors.



12361101



16115937



12357036



8024686



16448250



8026746

Same Dimension

The Same Dimension uses a secret algorithm to generate beautiful new colors.



12361101



16106667



12366989



6182997



10368512



2034176

Inverse Universe

The Inverse Universe completely reimagines the original color for something new.



9284796



11263221



9278908



5593950



26782



5151

Previews

White Background



This preview shows how the Decimal color 12361101 looks on a white background.

Color Contrast Check

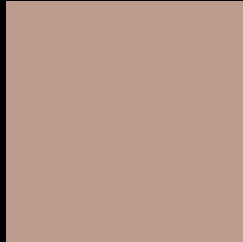
Large Text (above 18pt) WCAG AA × Fail

Any Text WCAG AA × Fail

Large Text (above 18pt) WCAG AAA × Fail

Any Text WCAG AAA × Fail

Black Background



This preview shows how the Decimal color 12361101 looks on a black background.

Color Contrast Check

Large Text (above 18pt) WCAG AA ✓ Pass

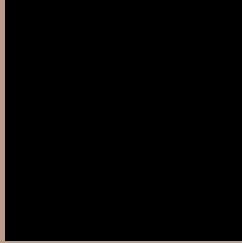
Any Text WCAG AA ✓ Pass

Large Text (above 18pt) WCAG AAA ✓ Pass

Any Text WCAG AAA ✓ Pass

If you want to check with other color combinations, try the [Color Contrast Checker](#).

Decimal 12361101 Background



This preview shows how black text looks on a background with the Decimal color 12361101.




This preview shows how white text looks on a background with the Decimal color 12361101.

Color Blindness Simulation

Color vision deficiency is a very complex topic, and I could not describe the different causes any better than Wikipedia does, so if you want to learn more, you should check out their [article about color blindness](#).

Dichromacy

	Original Color 12361101
	Protanopia 11248528
	Deuteranopia 12295565



Tritanopia
12556709

Trichromacy



Original Color
12361101

Protanomaly
11641231

Deuteranomaly
12295565

Tritanomaly
12491420

Monochromacy



Original Color
12361101

Achromatopsia
10790052

Achromatomaly
11379100

CSS Examples

Text

The CSS property to change the color of the text to Decimal 12361101 is called "color". The color property can be set on classes, ids or directly on the HTML element.

This example shows how text in the color #BC9D8D looks like.

```
.text, #text, p{  
    color:#BC9D8D  
}
```

If you want to add a text shadow in that color use the text-shadow property, you can generate a text shadow directly with our [CSS Text Shadow Generator](#).

Here you see how black text with a 4 pixel #BC9D8D colored shadow looks like.

```
.shadow{ text-shadow: 4px 4px 2px #BC9D8D
}
```

Border

The CSS property to change the border of an element to Decimal 12361101 is called "border". The border property can be set on classes, ids or directly on the HTML element.

This example shows the color as border, it can be applied via the CSS property "border" or "border-color".

```
.border, #border, table{ border:4px solid
#BC9D8D }
```

If only the border color should be changed use the property `border-color`.

```
.border{ border-color:#BC9D8D }
```

If you want to add a box shadow in that color use:

Here you see how a box with a 4 pixel #BC9D8D colored shadow looks like.

```
.boxshadow{ -moz-box-shadow:4px 4px 4px  
4px #BC9D8D; -webkit-box-shadow:4px 4px  
4px 4px #BC9D8D; box-shadow:4px 4px 4px  
4px #BC9D8D }
```

Background

The CSS property to change the background color of an element to Decimal 12361101 is called "background". The background property can be set on classes, ids or directly on the HTML element.

```
.background, #background, body{  
background:#BC9D8D }
```

If only the background color should be changed can be used:

```
.background{ background-color:#BC9D8D }
```

This example shows the color as background, it is applied via the CSS property "background".

To optimize and compress your CSS code, you can use our [online CSS compressor and optimizer](#) based on csstidy. If you want to create a linear or radial gradient as background or border, check our [CSS Gradient Generator](#).

Hey! You found this booklet interesting? Support Converting Colors with the new Membership Option!

The pro membership hides all ads, plus gives you double the colors in the color bucket, and more awesome pro features!

[Learn more, Memberships starting at \\$2.50/m!](#)

**Follow me
on Twitter!**

@ConvertingColor