

Converting Colors

Decimal(12361122)

Have a look what the booklet for
Decimal(12361122) contains.

Decimal(12361122)	3
<i>Conversions</i>	4
<i>Details</i>	6
<i>Harmonies</i>	11
<i>Previews</i>	23
<i>Color Blindness Simulation</i>	26
<i>CSS Examples</i>	29

Color

Decimal(12361122)

Conversions

Conversions Part 1

Format	Color
Hex	BC9DA2
RGB	188, 157, 162
RGB Percent	74%, 62%, 64%
CMY	0.2627, 0.3843, 0.3647
CMYK	0.00, 0.16, 0.14, 0.26
HSL	350°, 19%, 68%
HSV	350°, 16%, 74%
XYZ	39.3176, 37.4139, 39.3318
YIQ	166.8390, 16.8710, 8.1270

Conversions

Conversions Part 2

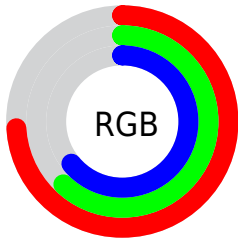
Format	Color
RYB	188, 157, 162
Decimal	12361122
CIELab	67.59, 12.27, 1.68
CIElCh	68, 12.379, 7.786
Yxy	37.4139, 0.3388, 0.3224
Android (android.graphics.Color)	4290551202 (0xFFBC9DA2)
YUV	166.8390, -2.3856, 18.5582
Hunter-Lab	61.1669, 7.6962, 4.6920

Details

The Decimal color **12361122** is a light color, and the websafe version is hex **CC9999**. A complement of this color would be **10337463**, and the grayscale version is **10987431**.

A 20% lighter version of the original color is **16045273**, and **8809070** is the 20% darker color. If you saturate the color by 10%, you get **12356242**, and if you desaturate by 10%, it is **12366002**.

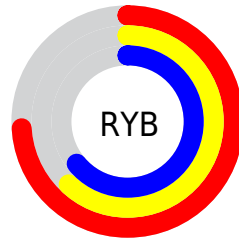
Distribution



Red (74%)

Green (62%)

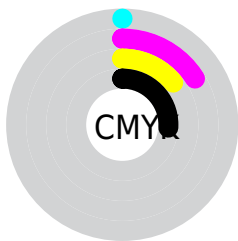
Blue (64%)



Red (74%)

Yellow (62%)

Blue (64%)

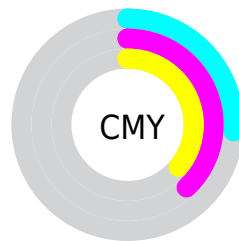


Cyan (0%)

Magenta (16%)

Yellow (14%)

Black (26%)



Cyan (26%)

Magenta (38%)

Yellow (36%)

Brightness & Saturation Gradients

These gradients show how the Decimal color 12361122 changes by changing the brightness by 10 percent. The first figure shows a shift by +10% for each color and the second figure -10%.

Similar to the brightness gradients but the following saturation gradients show a change of the Decimal color 12361122 by changing the saturation by 10% instead.


 12361122

 12361122

16777215

 10584968

 16045273

 8809070

 16773365

 7164246

 5519935

 4006953

 2494485

 327680

 0

 12361122

 12361122

 12356242

 12366002

 12351362

 12370882

 12346739

 12375505

 12341859

 12380385

 12336979

 12385265

 12332099

 12386303

 12327220

 12322596

 12320798

Harmonies

Analogous

The Analogous color harmony consists of three colors that are next to each other on the color wheel.



11968173



12361122



12361367

Triad

The Triadic color harmony groups three colors that are evenly spaced from another and form a triangle on the color wheel.



12361122



10397843



9480377

Complementary

The Complementary color scheme is a pair of colors which are on the opposite of each other on the color wheel.



12361122



10337463

Split Complementary

Split-complementary colors differ from the complementary color scheme. The scheme consists of three colors, the original color and two neighbors of the complement color.



9022130



12361122



9611932

Square

The Square scheme is like the rectangle color scheme, but the four colors are evenly spaced on the color wheel.



12361122



11249039



9087911



10266042

Rectangle

The Rectangle color scheme consists of four colors that form a rectangle on the color wheel.



12361122



12099730



9087911



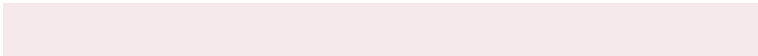
9284023

Sweetspot

The Sweet Spot groups the original color and five complimentary colors.



12361122



16116203



12033468



8024948



16448250



8026746

Same Dimension

The Same Dimension uses a secret algorithm to generate beautiful new colors.



12361122



16106700



12363677



6182230



10354713



2031621

Inverse Universe

The Inverse Universe completely reimagines the original color for something new.



12361122



16106700



10334908



6182230



10354713



2031621

Previews

White Background



This preview shows how the Decimal color 12361122 looks on a white background.

Color Contrast Check

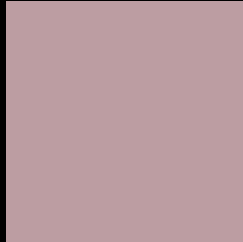
Large Text (above 18pt) WCAG AA × Fail

Any Text WCAG AA × Fail

Large Text (above 18pt) WCAG AAA × Fail

Any Text WCAG AAA × Fail

Black Background



This preview shows how the Decimal color 12361122 looks on a black background.

Color Contrast Check

Large Text (above 18pt) WCAG AA ✓ Pass

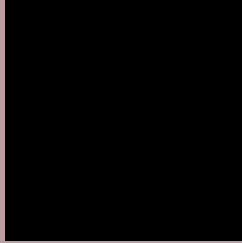
Any Text WCAG AA ✓ Pass

Large Text (above 18pt) WCAG AAA ✓ Pass

Any Text WCAG AAA ✓ Pass

If you want to check with other color combinations, try the [Color Contrast Checker](#).

Decimal 12361122 Background



This preview shows how black text looks on a background with the Decimal color 12361122.



This preview shows how white text looks on a background with the Decimal color 12361122.

Color Blindness Simulation

Color vision deficiency is a very complex topic, and I could not describe the different causes any better than Wikipedia does, so if you want to learn more, you should check out their [article about color blindness](#).

Dichromacy



Original Color
12361122

Protanopia
10986662

Deuteranopia
11968418



Tritanopia
12426408

Trichromacy



Original Color
12361122

Protanomaly
11510181

Deuteranomaly
12099234

Tritanomaly
12426406

Monochromacy



Original Color
12361122

Achromatopsia
10987431

Achromatomaly
11510693

CSS Examples

Text

The CSS property to change the color of the text to Decimal 12361122 is called "color". The color property can be set on classes, ids or directly on the HTML element.

This example shows how text in the color #BC9DA2 looks like.

```
.text, #text, p{  
    color:#BC9DA2  
}
```

If you want to add a text shadow in that color use the text-shadow property, you can generate a text shadow directly with our [CSS Text Shadow Generator](#).

Here you see how black text with a 4 pixel #BC9DA2 colored shadow looks like.

```
.shadow{ text-shadow: 4px 4px 2px #BC9DA2
}
```

Border

The CSS property to change the border of an element to Decimal 12361122 is called "border". The border property can be set on classes, ids or directly on the HTML element.

This example shows the color as border, it can be applied via the CSS property "border" or "border-color".

```
.border, #border, table{ border:4px solid
#BC9DA2 }
```

If only the border color should be changed use the property `border-color`.

```
.border{ border-color:#BC9DA2 }
```

If you want to add a box shadow in that color use:

Here you see how a box with a 4 pixel #BC9DA2 colored shadow looks like.

```
.boxshadow{ -moz-box-shadow:4px 4px 4px  
4px #BC9DA2; -webkit-box-shadow:4px 4px  
4px 4px #BC9DA2; box-shadow:4px 4px 4px  
4px #BC9DA2 }
```

Background

The CSS property to change the background color of an element to Decimal 12361122 is called "background". The background property can be set on classes, ids or directly on the HTML element.

```
.background, #background, body{  
background:#BC9DA2 }
```

If only the background color should be changed can be used:

```
.background{ background-color:#BC9DA2 }
```

This example shows the color as background, it is applied via the CSS property "background".

To optimize and compress your CSS code, you can use our [online CSS compressor and optimizer](#) based on csstidy. If you want to create a linear or radial gradient as background or border, check our [CSS Gradient Generator](#).

Hey! You found this booklet interesting? Support Converting Colors with the new Membership Option!

The pro membership hides all ads, plus gives you double the colors in the color bucket, and more awesome pro features!

[Learn more, Memberships starting at \\$2.50/m!](#)

**Follow me
on Twitter!**

@ConvertingColor