

Converting Colors

Decimal(12415088)

Have a look what the booklet for
Decimal(12415088) contains.

Decimal(12415088)	3
<i>Conversions</i>	4
<i>Details</i>	6
<i>Harmonies</i>	11
<i>Previews</i>	23
<i>Color Blindness Simulation</i>	26
<i>CSS Examples</i>	29

Color

Decimal(12415088)

Conversions

Conversions Part 1

Format	Color
Hex	BD7070
RGB	189, 112, 112
RGB Percent	74%, 44%, 44%
CMY	0.2588, 0.5608, 0.5608
CMYK	0.00, 0.41, 0.41, 0.26
HSL	0°, 37%, 59%
HSV	0°, 41%, 74%
XYZ	29.7051, 23.5770, 18.3144
YIQ	135.0230, 45.8920, 16.3240

Conversions

Conversions Part 2

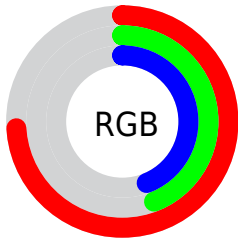
Format	Color
RYB	189, 112, 112
Decimal	12415088
CIELab	55.66, 30.43, 13.15
CIElCh	56, 33.148, 23.379
Yxy	23.5770, 0.4149, 0.3293
Android (android.graphics.Color)	4290605168 (0xFFBD7070)
YUV	135.0230, -11.3503, 47.3378
Hunter-Lab	48.5562, 24.2272, 11.6263

Details

The Decimal color **12415088** is a dark color, and the websafe version is hex **CC6666**. A complement of this color would be **7388605**, and the grayscale version is **8882055**.

A 20% lighter version of the original color is **16229796**, and **8732224** is the 20% darker color. If you saturate the color by 10%, you get **12410205**, and if you desaturate by 10%, it is **12419971**.

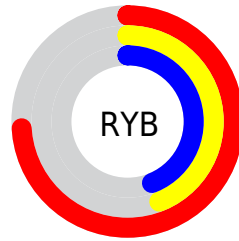
Distribution



Red (74%)

Green (44%)

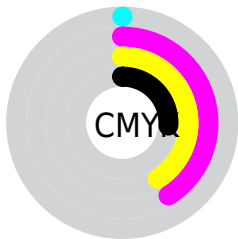
Blue (44%)



Red (74%)

Yellow (44%)

Blue (44%)

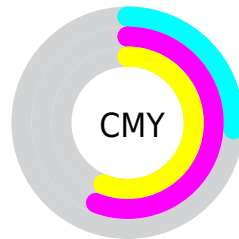


Cyan (0%)

Magenta (41%)

Yellow (41%)

Black (26%)



Cyan (26%)

Magenta (56%)

Yellow (56%)

Brightness & Saturation Gradients

These gradients show how the Decimal color 12415088 changes by changing the brightness by 10 percent. The first figure shows a shift by +10% for each color and the second figure -10%.

Similar to the brightness gradients but the following saturation gradients show a change of the Decimal color 12415088 by changing the saturation by 10% instead.

 12415088

 12415088

16777215

 10573656

 16229796

 8732224

 16761023

 6956586

 16768219

 5180950

 16775671

 3538944

 1572865

 0

 12415088

 12415088

 12410205

 12419971

 12405322

 12424854

 12400439

 12429737

 12395556

 12434620

 12390673

 12439503

 12386304

 12444129

 12449012

 12451839

Harmonies

Analogous

The Analogous color harmony consists of three colors that are next to each other on the color wheel.



12087181



12415088



11761496

Triad

The Triadic color harmony groups three colors that are evenly spaced from another and form a triangle on the color wheel.



12415088



6328674



5147326

Complementary

The Complementary color scheme is a pair of colors which are on the opposite of each other on the color wheel.



12415088



7388605

Split Complementary

Split-complementary colors differ from the complementary color scheme. The scheme consists of three colors, the original color and two neighbors of the complement color.



758195



12415088



3708030

Square

The Square scheme is like the rectangle color scheme, but the four colors are evenly spaced on the color wheel.



12415088



8489807



38043



8356026

Rectangle

The Rectangle color scheme consists of four colors that form a rectangle on the color wheel.



12415088



10911310



38043



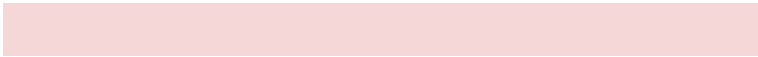
3968444

Sweetspot

The Sweet Spot groups the original color and five complimentary colors.



12415088



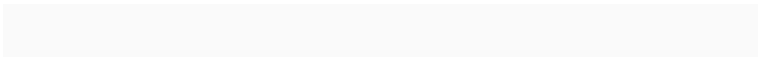
16111575



12415165



8022377



16448250



8026746

Same Dimension

The Same Dimension uses a secret algorithm to generate beautiful new colors.



12415088



16088445



12425072



6182229



10354688



2031616

Inverse Universe

The Inverse Universe completely reimagines the original color for something new.



7388605



8254965



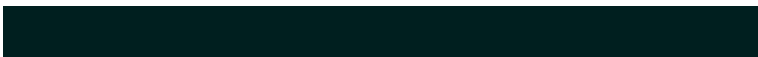
7378877



5594718



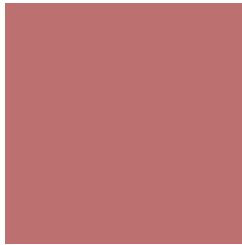
40606



7967

Previews

White Background



This preview shows how the Decimal color 12415088 looks on a white background.

Color Contrast Check

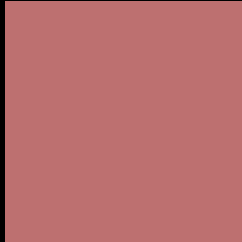
Large Text (above 18pt) WCAG AA ✓ Pass

Any Text WCAG AA × Fail

Large Text (above 18pt) WCAG AAA × Fail

Any Text WCAG AAA × Fail

Black Background



This preview shows how the Decimal color 12415088 looks on a black background.

Color Contrast Check

Large Text (above 18pt) WCAG AA ✓ Pass

Any Text WCAG AA ✓ Pass

Large Text (above 18pt) WCAG AAA ✓ Pass

Any Text WCAG AAA × Fail

If you want to check with other color combinations, try the [Color Contrast Checker](#).

Decimal 12415088 Background



This preview shows how black text looks on a background with the Decimal color 12415088.



This preview shows how white text looks on a background with the Decimal color 12415088.

Color Blindness Simulation

Color vision deficiency is a very complex topic, and I could not describe the different causes any better than Wikipedia does, so if you want to learn more, you should check out their [article about color blindness](#).

Dichromacy



Original Color
12415088

Protanopia
9143675

Deuteranopia
10191213



Tritanopia
12480375

Trichromacy



Original Color
12415088

Protanomaly
10321271

Deuteranomaly
10976110

Tritanomaly
12480372

Monochromacy



Original Color
12415088

Achromatopsia
8882055

Achromatomaly
10190719

CSS Examples

Text

The CSS property to change the color of the text to Decimal 12415088 is called "color". The color property can be set on classes, ids or directly on the HTML element.

This example shows how text in the color #BD7070 looks like.

```
.text, #text, p{  
    color:#BD7070  
}
```

If you want to add a text shadow in that color use the text-shadow property, you can generate a text shadow directly with our [CSS Text Shadow Generator](#).

Here you see how black text with a 4 pixel #BD7070 colored shadow looks like.

```
.shadow{ text-shadow: 4px 4px 2px #BD7070
}
```

Border

The CSS property to change the border of an element to Decimal 12415088 is called "border". The border property can be set on classes, ids or directly on the HTML element.

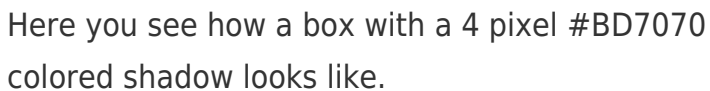
This example shows the color as border, it can be applied via the CSS property "border" or "border-color".

```
.border, #border, table{ border:4px solid
#BD7070 }
```

If only the border color should be changed use the property `border-color`.

```
.border{ border-color:#BD7070 }
```

If you want to add a box shadow in that color use:



Here you see how a box with a 4 pixel `#BD7070` colored shadow looks like.

```
.boxshadow{ -moz-box-shadow:4px 4px 4px  
4px #BD7070; -webkit-box-shadow:4px 4px  
4px 4px #BD7070; box-shadow:4px 4px 4px  
4px #BD7070 }
```

Background

The CSS property to change the background color of an element to Decimal 12415088 is called "background". The background property can be set on classes, ids or directly on the HTML element.

```
.background, #background, body{  
background:#BD7070 }
```

If only the background color should be changed can be used:

```
.background{ background-color:#BD7070 }
```

This example shows the color as background, it is applied via the CSS property "background".

To optimize and compress your CSS code, you can use our [online CSS compressor and optimizer](#) based on csstidy. If you want to create a linear or radial gradient as background or border, check our [CSS Gradient Generator](#).

Hey! You found this booklet interesting? Support Converting Colors with the new Membership Option!

The pro membership hides all ads, plus gives you double the colors in the color bucket, and more awesome pro features!

[Learn more, Memberships starting at \\$2.50/m!](#)

**Follow me
on Twitter!**

@ConvertingColor