

Converting Colors

Decimal(12422026)

Have a look what the booklet for
Decimal(12422026) contains.

Decimal(12422026)	3
<i>Conversions</i>	4
<i>Details</i>	6
<i>Harmonies</i>	11
<i>Previews</i>	23
<i>Color Blindness Simulation</i>	26
<i>CSS Examples</i>	29

Color

Decimal(12422026)

Conversions

Conversions Part 1

Format	Color
Hex	BD8B8A
RGB	189, 139, 138
RGB Percent	74%, 55%, 54%
CMY	0.2588, 0.4549, 0.4588
CMYK	0.00, 0.26, 0.27, 0.26
HSL	1°, 28%, 64%
HSV	1°, 27%, 74%
XYZ	34.8063, 31.1190, 28.2168
YIQ	153.8360, 30.1210, 10.2890

Conversions

Conversions Part 2

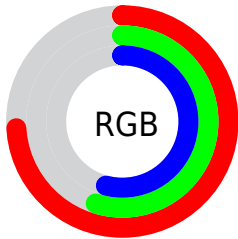
Format	Color
RYB	189, 139, 138
Decimal	12422026
CIELab	62.61, 18.89, 8.02
CIELCh	63, 20.524, 23.003
Yxy	31.1190, 0.3697, 0.3306
Android (android.graphics.Color)	4290612106 (0xFFBD8B8A)
YUV	153.8360, -7.8071, 30.8388
Hunter-Lab	55.7844, 13.7511, 9.0591

Details

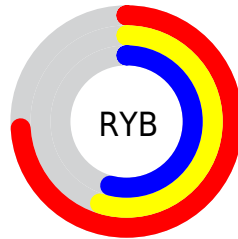
The Decimal color **12422026** is a light color, and the websafe version is hex **CC9999**. A complement of this color would be **9092285**, and the grayscale version is **10132122**.

A 20% lighter version of the original color is **16171455**, and **8804696** is the 20% darker color. If you saturate the color by 10%, you get **12417143**, and if you desaturate by 10%, it is **12426909**.

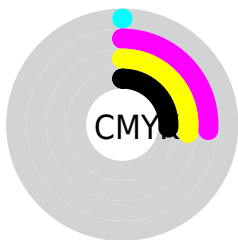
Distribution



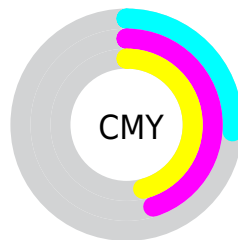
- Red (74%)
- Green (55%)
- Blue (54%)



- Red (74%)
- Yellow (55%)
- Blue (54%)



- Cyan (0%)
- Magenta (26%)
- Yellow (27%)
- Black (26%)



- Cyan (26%)
- Magenta (45%)
- Yellow (46%)

Brightness & Saturation Gradients

These gradients show how the Decimal color 12422026 changes by changing the brightness by 10 percent. The first figure shows a shift by +10% for each color and the second figure -10%.

Similar to the brightness gradients but the following saturation gradients show a change of the Decimal color 12422026 by changing the saturation by 10% instead.


 12422026

 12422026

16777215

 10580337

 16171455


 8804696

 16768475

 7094593

 16775672

 5450283

 3806487

 2490368

 0

 12422026

 12422026

 12417143

 12426909

 12412516

 12431536

 12407633

 12436419

 12403006

 12441046

 12398123

 12445929

 12393497

 12450555

 12388614

 12451839

 12387328

Harmonies

Analogous

The Analogous color harmony consists of three colors that are next to each other on the color wheel.



12159900



12422026



12029819

Triad

The Triadic color harmony groups three colors that are evenly spaced from another and form a triangle on the color wheel.



12422026



8494977



8166075

Complementary

The Complementary color scheme is a pair of colors which are on the opposite of each other on the color wheel.



12422026



9092285

Split Complementary

Split-complementary colors differ from the complementary color scheme. The scheme consists of three colors, the original color and two neighbors of the complement color.



6922164



12422026



7316114

Square

The Square scheme is like the rectangle color scheme, but the four colors are evenly spaced on the color wheel.



12422026



9870198



6595237



9802937

Rectangle

The Rectangle color scheme consists of four colors that form a rectangle on the color wheel.



12422026



11506549



6595237



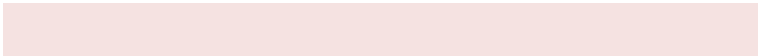
7707834

Sweetspot

The Sweet Spot groups the original color and five complimentary colors.



12422026



16114401



12421820



8023662



16448250



8026746

Same Dimension

The Same Dimension uses a secret algorithm to generate beautiful new colors.



12422026



16099494



12428426



6182229



10355456



2031872

Inverse Universe

The Inverse Universe completely reimagines the original color for something new.



9092285



10941429



9085885



5594718



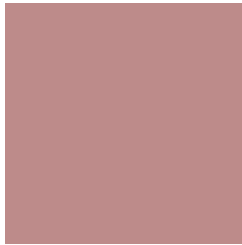
39838



7711

Previews

White Background



This preview shows how the Decimal color 12422026 looks on a white background.

Color Contrast Check

Large Text (above 18pt) WCAG AA × Fail

Any Text WCAG AA × Fail

Large Text (above 18pt) WCAG AAA × Fail

Any Text WCAG AAA × Fail

Black Background



This preview shows how the Decimal color 12422026 looks on a black background.

Color Contrast Check

Large Text (above 18pt) WCAG AA ✓ Pass

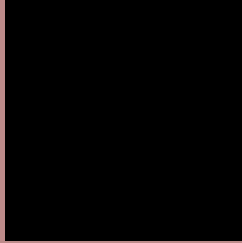
Any Text WCAG AA ✓ Pass

Large Text (above 18pt) WCAG AAA ✓ Pass

Any Text WCAG AAA ✓ Pass

If you want to check with other color combinations, try the [Color Contrast Checker](#).

Decimal 12422026 Background



This preview shows how black text looks on a background with the Decimal color 12422026.



This preview shows how white text looks on a background with the Decimal color 12422026.

Color Blindness Simulation

Color vision deficiency is a very complex topic, and I could not describe the different causes any better than Wikipedia does, so if you want to learn more, you should check out their [article about color blindness](#).

Dichromacy



Original Color
12422026

Protanopia
10262416

Deuteranopia
11309705



Tritanopia
12487060

Trichromacy



Original Color
12422026

Protanomaly
11047822

Deuteranomaly
11702153

Tritanomaly
12487312

Monochromacy



Original Color
12422026

Achromatopsia
10132122

Achromatomaly
10982804

CSS Examples

Text

The CSS property to change the color of the text to Decimal 12422026 is called "color". The color property can be set on classes, ids or directly on the HTML element.

This example shows how text in the color #BD8B8A looks like.

```
.text, #text, p{  
    color:#BD8B8A  
}
```

If you want to add a text shadow in that color use the text-shadow property, you can generate a text shadow directly with our [CSS Text Shadow Generator](#).

Here you see how black text with a 4 pixel #BD8B8A colored shadow looks like.

```
.shadow{ text-shadow: 4px 4px 2px #BD8B8A
}
```

Border

The CSS property to change the border of an element to Decimal 12422026 is called "border". The border property can be set on classes, ids or directly on the HTML element.

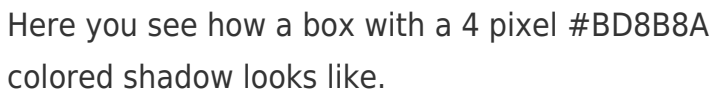
This example shows the color as border, it can be applied via the CSS property "border" or "border-color".

```
.border, #border, table{ border:4px solid
#BD8B8A }
```

If only the border color should be changed use the property `border-color`.

```
.border{ border-color:#BD8B8A }
```

If you want to add a box shadow in that color use:



Here you see how a box with a 4 pixel #BD8B8A colored shadow looks like.

```
.boxshadow{ -moz-box-shadow:4px 4px 4px  
4px #BD8B8A; -webkit-box-shadow:4px 4px  
4px 4px #BD8B8A; box-shadow:4px 4px 4px  
4px #BD8B8A }
```

Background

The CSS property to change the background color of an element to Decimal 12422026 is called "background". The background property can be set on classes, ids or directly on the HTML element.

```
.background, #background, body{  
background:#BD8B8A }
```

If only the background color should be changed can be used:

```
.background{ background-color:#BD8B8A }
```

This example shows the color as background, it is applied via the CSS property "background".

To optimize and compress your CSS code, you can use our [online CSS compressor and optimizer](#) based on csstidy. If you want to create a linear or radial gradient as background or border, check our [CSS Gradient Generator](#).

Hey! You found this booklet interesting? Support Converting Colors with the new Membership Option!

The pro membership hides all ads, plus gives you double the colors in the color bucket, and more awesome pro features!

[Learn more, Memberships starting at \\$2.50/m!](#)

**Follow me
on Twitter!**

@ConvertingColor